



DRILL STEM TEST REPORT

Prepared For: **Shelby Resources LLC.**

2717 Canel Blvd. Suite C
Hays Kansas 67601

ATTN: Chris Gottschalk

10/22S/16W Pawnee

Buster #1-10

Start Date: 2011.02.01 @ 05:18:00

End Date: 2011.02.01 @ 14:45:00

Job Ticket #: 16025 DST #: 1

Superior Testers Enterprises LLC
PO Box 138 Great Bend KS 67530
1-800-792-6902

Printed: 2011.02.01 @ 15:23:29



DRILL STEM TEST REPORT

Shelby Resources LLC.
 2717 Canel Blvd. Suite C
 Hays Kansas 67601
 ATTN: Chris Gottschalk

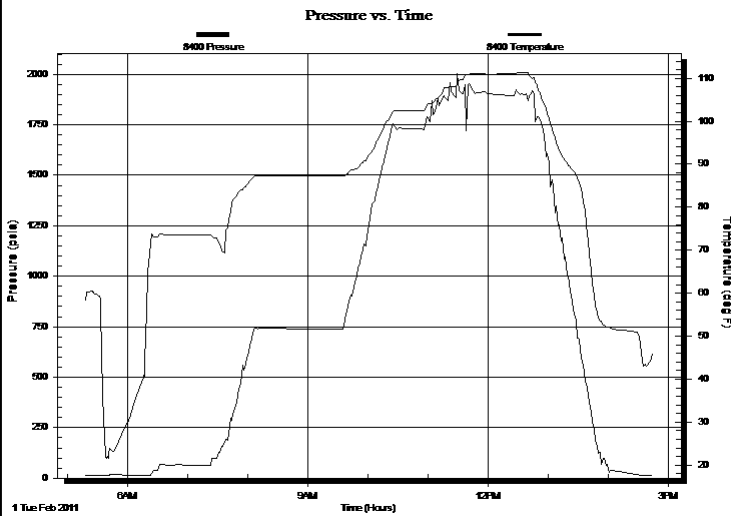
Buster #1-10
10/22S/16W Pawnee
 Job Ticket: 16025 **DST#: 1**
 Test Start: 2011.02.01 @ 05:18:00

GENERAL INFORMATION:

Formation: **Viola**
 Deviated: No Whipstock: ft (KB)
 Test Type: Conventional Bottom Hole (Initial)
 Time Tool Opened: 00:00:00 Tester: Dylan E Ellis
 Time Test Ended: 14:45:00 Unit No: 3345/Great Bend/60
 Interval: **3936.00 ft (KB) To 3966.00 ft (KB) (TVD)** Reference Elevations: 2018.00 ft (KB)
 Total Depth: 3966.00 ft (KB) (TVD) 2007.00 ft (CF)
 Hole Diameter: 7.88 inches Hole Condition: Fair KB to GR/CF: 11.00 ft

Serial #: 8400 Outside
 Press @ Run Depth: psia @ 3963.00 ft (KB) Capacity: 5000.00 psia
 Start Date: 2011.02.01 End Date: 2011.02.01 Last Calib.: 2011.02.01
 Start Time: 05:18:00 End Time: 14:45:00 Time On Btm:
 Time Off Btm:

TEST COMMENT: 1ST Opening did not happen/w e had a miss run/Packer Failure/ the tally board w as off by 31.00 feet



PRESSURE SUMMARY

Time (Min.)	Pressure (psia)	Temp (deg F)	Annotation

Recovery

Length (ft)	Description	Volume (bbl)
150.00	Mud 100%	0.74
0.00	We had a packer failure	0.00

Gas Rates

Choke (inches)	Pressure (psia)	Gas Rate (Mcf/d)



DRILL STEM TEST REPORT

Shelby Resources LLC.
 2717 Canel Blvd. Suite C
 Hays Kansas 67601
 ATTN: Chris Gottschalk

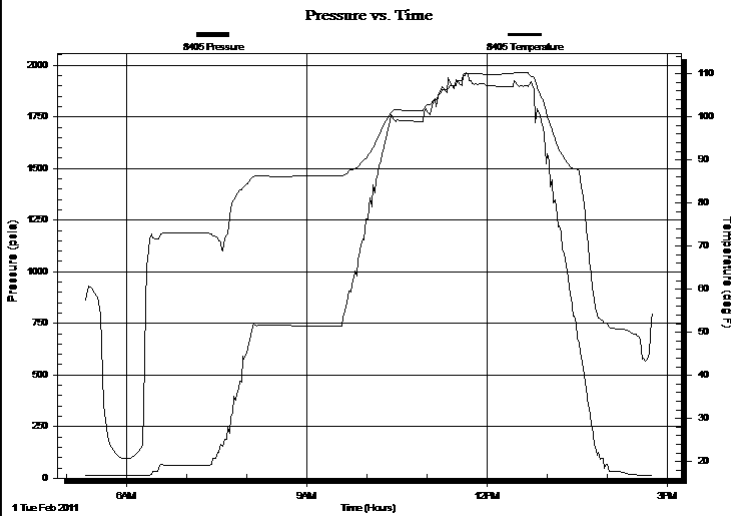
Buster #1-10
10/22S/16W Pawnee
 Job Ticket: 16025 **DST#: 1**
 Test Start: 2011.02.01 @ 05:18:00

GENERAL INFORMATION:

Formation: **Viola**
 Deviated: No Whipstock: ft (KB)
 Test Type: Conventional Bottom Hole (Initial)
 Time Tool Opened: 00:00:00 Tester: Dylan E Ellis
 Time Test Ended: 14:45:00 Unit No: 3345/Great Bend/60
 Interval: **3936.00 ft (KB) To 3966.00 ft (KB) (TVD)** Reference Elevations: 2018.00 ft (KB)
 Total Depth: 3966.00 ft (KB) (TVD) 2007.00 ft (CF)
 Hole Diameter: 7.88 inches Hole Condition: Fair KB to GR/CF: 11.00 ft

Serial #: 8405 Inside
 Press @ Run Depth: psia @ 3962.00 ft (KB) Capacity: 5000.00 psia
 Start Date: 2011.02.01 End Date: 2011.02.01 Last Calib.: 2011.02.01
 Start Time: 05:18:00 End Time: 14:45:32 Time On Btm:
 Time Off Btm:

TEST COMMENT: 1ST Opening did not happen/w e had a miss run/Packer Failure/ the tally board w as off by 31.00 feet



PRESSURE SUMMARY

Time (Min.)	Pressure (psia)	Temp (deg F)	Annotation

Recovery

Length (ft)	Description	Volume (bbl)
150.00	Mud 100%	0.74
0.00	We had a packer failure	0.00

Gas Rates

Choke (inches)	Pressure (psia)	Gas Rate (Mcf/d)



DRILL STEM TEST REPORT

TOOL DIAGRAM

Shelby Resources LLC.
 2717 Canel Blvd. Suite C
 Hays Kansas 67601
 ATTN: Chris Gottschalk

Buster #1-10
10/22S/16W Pawnee
 Job Ticket: 16025 **DST#: 1**
 Test Start: 2011.02.01 @ 05:18:00

Tool Information

Drill Pipe:	Length: 3679.00 ft	Diameter: 3.80 inches	Volume: 51.61 bbl	Tool Weight:	2000.00 lb
Heavy Wt. Pipe:	Length: 0.00 ft	Diameter: 0.00 inches	Volume: 0.00 bbl	Weight set on Packer:	20000.00 lb
Drill Collar:	Length: 259.05 ft	Diameter: 2.25 inches	Volume: 1.27 bbl	Weight to Pull Loose:	0.00 lb
			<u>Total Volume: 52.88 bbl</u>	Tool Chased	0.00 ft
Drill Pipe Above KB:	30.05 ft			String Weight: Initial	74000.00 lb
Depth to Top Packer:	3936.00 ft			Final	74000.00 lb
Depth to Bottom Packer:	ft				
Interval between Packers:	30.00 ft				
Tool Length:	58.00 ft				
Number of Packers:	2	Diameter: 6.75 inches			

Tool Comments:

Tool Description	Length (ft)	Serial No.	Position	Depth (ft)	Accum. Lengths
------------------	-------------	------------	----------	------------	----------------

Shut-In Tool	5.00			3913.00	
Hydraulic Tool	5.00			3918.00	
Jars	6.00			3924.00	
Safety Joint	2.00			3926.00	
Packer	5.00			3931.00	28.00 Bottom Of Top Packer
Packer	5.00			3936.00	
Perforations	25.00			3961.00	
Recorder	1.00	8405	Inside	3962.00	
Recorder	1.00	8400	Outside	3963.00	
Bull Plug	3.00			3966.00	30.00 Bottom Packers & Anchor
Total Tool Length:	58.00				



DRILL STEM TEST REPORT

FLUID SUMMARY

Shelby Resources LLC.
 2717 Canel Blvd. Suite C
 Hays Kansas 67601
 ATTN: Chris Gottschalk

Buster #1-10
10/22S/16W Pawnee
 Job Ticket: 16025 **DST#: 1**
 Test Start: 2011.02.01 @ 05:18:00

Mud and Cushion Information

Mud Type: Gel Chem	Cushion Type:	Oil API:	deg API
Mud Weight: 9.00 lb/gal	Cushion Length: ft	Water Salinity:	ppm
Viscosity: 46.00 sec/qt	Cushion Volume: bbl		
Water Loss: 8.00 in ³	Gas Cushion Type:		
Resistivity: ohm.m	Gas Cushion Pressure: psia		
Salinity: 7600.00 ppm			
Filter Cake: 1.00 inches			

Recovery Information

Recovery Table

Length ft	Description	Volume bbl
150.00	Mud 100%	0.738
0.00	We had a packer failure	0.000

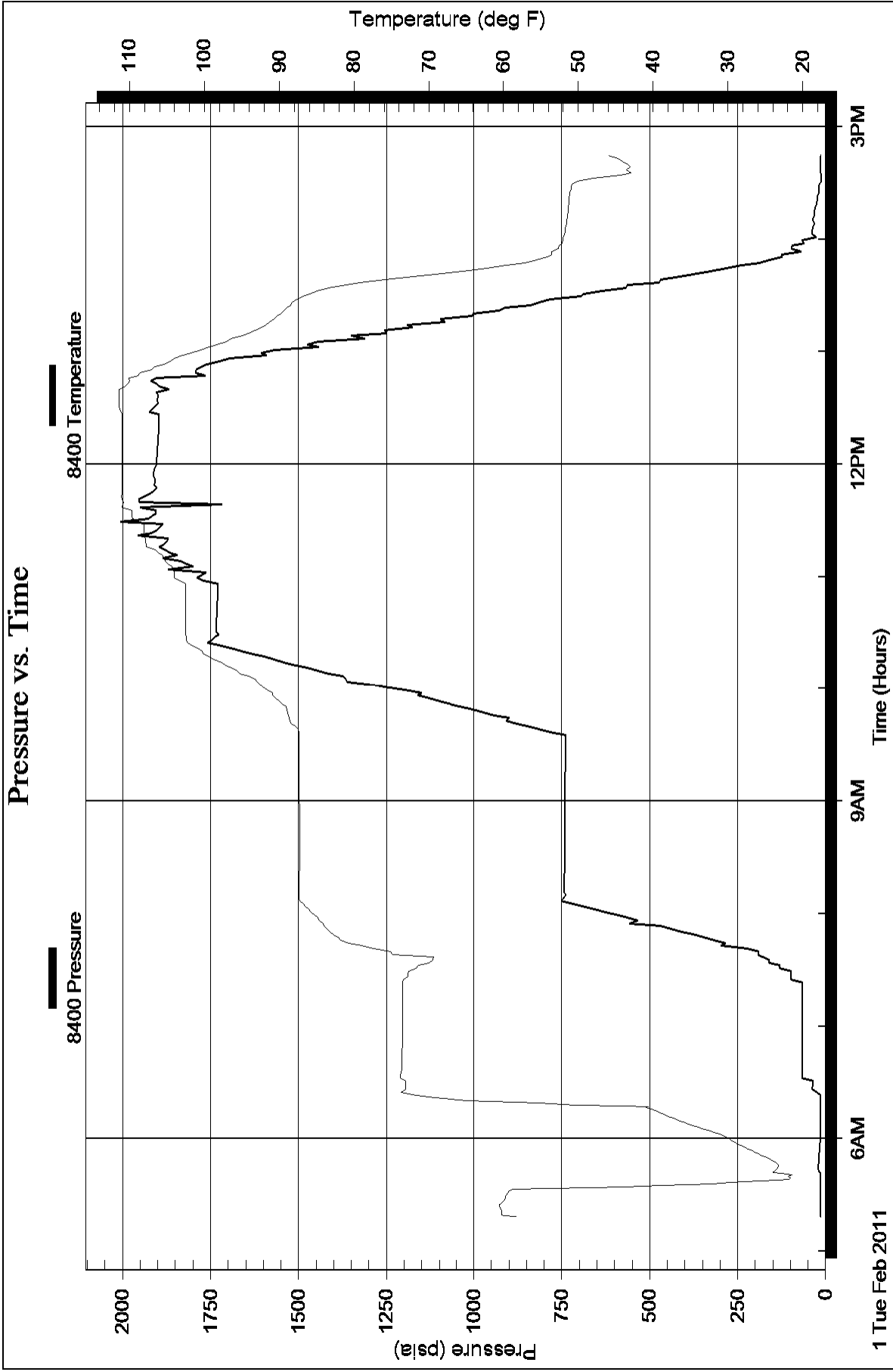
Total Length: 150.00 ft Total Volume: 0.738 bbl
 Num Fluid Samples: 0 Num Gas Bombs: 0 Serial #:
 Laboratory Name: Laboratory Location:
 Recovery Comments:

Serial #: 8400

Outside Shelby Resources LLC.

10/22S/16W Pawnee

DST Test Number: 1



Serial #: 8405

Inside

Shelby Resources LLC.

10/22S/16W Pawnee

DST Test Number: 1

