



DRILL STEM TEST REPORT

Prepared For: **Shelby Resources LLC.**

2717 Canel Blvd. Suite C
Hays Kansas 67601

ATTN: Chris Gottschalk

10/22S/16W Pawnee

Buster #1-10

Start Date: 2011.02.04 @ 07:26:00

End Date: 2011.02.04 @ 16:18:30

Job Ticket #: 15651 DST #: 2

Superior Testers Enterprises LLC
PO Box 138 Great Bend KS 67530
1-800-792-6902

Printed: 2011.02.04 @ 17:01:10

Shelby Resources LLC. Buster #1-10 10/22S/16W Pawnee DST # 2 Arbuckle 2011.02.04



DRILL STEM TEST REPORT

Shelby Resources LLC.
 2717 Canel Blvd. Suite C
 Hays Kansas 67601
 ATTN: Chris Gottschalk

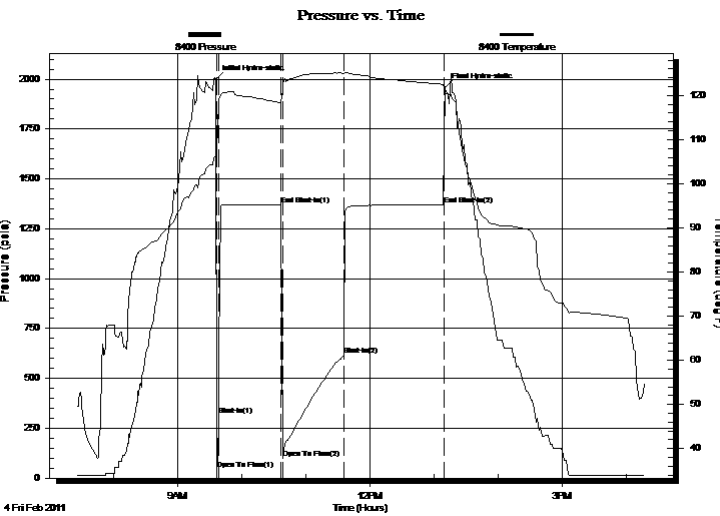
Buster #1-10
10/22S/16W Pawnee
 Job Ticket: 15651 **DST#: 2**
 Test Start: 2011.02.04 @ 07:26:00

GENERAL INFORMATION:

Formation: **Arbuckle**
 Deviated: No Whipstock: ft (KB)
 Test Type: Conventional Bottom Hole (Initial)
 Time Tool Opened: 09:36:30 Tester: Dylan E Ellis
 Time Test Ended: 16:18:30 Unit No: 3345/Great Bend/60
 Interval: **4033.00 ft (KB) To 4040.00 ft (KB) (TVD)** Reference Elevations: 2018.00 ft (KB)
 Total Depth: 4040.00 ft (KB) (TVD) 2007.00 ft (CF)
 Hole Diameter: 7.88 inches Hole Condition: Fair KB to GR/CF: 11.00 ft

Serial #: 8400 Outside
 Press @ Run Depth: 617.60 psia @ 4037.00 ft (KB) Capacity: 5000.00 psia
 Start Date: 2011.02.04 End Date: 2011.02.04 Last Calib.: 2011.02.04
 Start Time: 07:26:00 End Time: 16:18:30 Time On Btm: 2011.02.04 @ 09:35:30
 Time Off Btm: 2011.02.04 @ 13:10:30

TEST COMMENT: 1ST Opening 15 Minutes weak but building blow/blow built to 2 inches into the bucket of water
 1ST Shut-In 45 Minutes yes blow back
 2ND Opening 60 Minutes fair buiding blow/blow blew to bottom of the bucket of water in 4 minutes
 2ND Shut-In 90 Minutes yes blow back



PRESSURE SUMMARY

Time (Min.)	Pressure (psia)	Temp (deg F)	Annotation
0	1999.47	106.32	Initial Hydro-static
1	42.44	107.27	Open To Flow (1)
3	317.43	118.46	Shut-In(1)
62	1369.56	118.30	End Shut-In(1)
63	101.49	121.02	Open To Flow (2)
121	617.60	125.02	Shut-In(2)
214	1369.18	122.52	End Shut-In(2)
215	1957.64	120.93	Final Hydro-static

Recovery

Length (ft)	Description	Volume (bbl)
698.00	Clean Gassy Oil 100%	7.43
315.00	Slightly Mud cut Oilly Water	4.42
0.00	Oil 10% Mud 15% Water 75%	0.00
252.00	Slightly Oil cut Water	3.53
0.00	Oil 6% Water 94%	0.00
126.00	Oil Spotted Water	1.77

Gas Rates

Choke (inches)	Pressure (psia)	Gas Rate (Mcf/d)



DRILL STEM TEST REPORT

Shelby Resources LLC.
 2717 Canel Blvd. Suite C
 Hays Kansas 67601
 ATTN: Chris Gottschalk

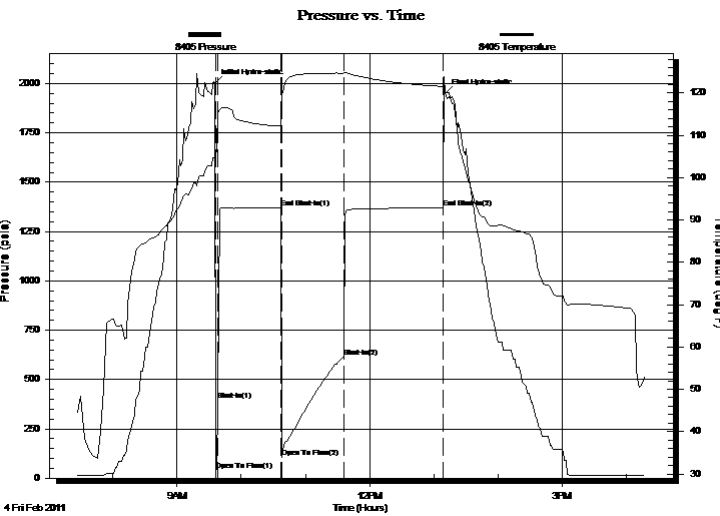
Buster #1-10
10/22S/16W Pawnee
 Job Ticket: 15651 **DST#: 2**
 Test Start: 2011.02.04 @ 07:26:00

GENERAL INFORMATION:

Formation: **Arbuckle**
 Deviated: No Whipstock: ft (KB)
 Test Type: Conventional Bottom Hole (Initial)
 Time Tool Opened: 09:36:30 Tester: Dylan E Ellis
 Time Test Ended: 16:18:30 Unit No: 3345/Great Bend/60
 Interval: **4033.00 ft (KB) To 4040.00 ft (KB) (TVD)** Reference Elevations: 2018.00 ft (KB)
 Total Depth: 4040.00 ft (KB) (TVD) 2007.00 ft (CF)
 Hole Diameter: 7.88 inches Hole Condition: Fair KB to GR/CF: 11.00 ft

Serial #: 8405 Inside
 Press @ Run Depth: 1368.08 psia @ 4036.00 ft (KB) Capacity: 5000.00 psia
 Start Date: 2011.02.04 End Date: 2011.02.04 Last Calib.: 2011.02.04
 Start Time: 07:26:00 End Time: 16:17:01 Time On Btm: 2011.02.04 @ 09:35:01
 Time Off Btm: 2011.02.04 @ 13:10:01

TEST COMMENT: 1ST Opening 15 Minutes weak but building blow/blow built to 2 inches into the bucket of water
 1ST Shut-In 45 Minutes yes blow back
 2ND Opening 60 Minutes fair building blow/blow blew to bottom of the bucket of water in 4 minutes
 2ND Shut-In 90 Minutes yes blow back



PRESSURE SUMMARY

Time (Min.)	Pressure (psia)	Temp (deg F)	Annotation
0	1999.87	104.73	Initial Hydro-static
1	41.90	104.05	Open To Flow (1)
3	395.03	115.41	Shut-In(1)
62	1368.65	112.24	End Shut-In(1)
63	103.22	115.36	Open To Flow (2)
121	615.09	124.59	Shut-In(2)
214	1368.08	121.53	End Shut-In(2)
215	1946.98	120.21	Final Hydro-static

Recovery

Length (ft)	Description	Volume (bbl)
698.00	Clean Gassy Oil 100%	7.43
315.00	Slightly Mud cut Oilly Water	4.42
0.00	Oil 10% Mud 15% Water 75%	0.00
252.00	Slightly Oil cut Water	3.53
0.00	Oil 6% Water 94%	0.00
126.00	Oil Spotted Water	1.77

Gas Rates

Choke (inches)	Pressure (psia)	Gas Rate (Mcf/d)



DRILL STEM TEST REPORT

TOOL DIAGRAM

Shelby Resources LLC.
 2717 Canel Blvd. Suite C
 Hays Kansas 67601
 ATTN: Chris Gottschalk

Buster #1-10
10/22S/16W Pawnee
 Job Ticket: 15651 **DST#: 2**
 Test Start: 2011.02.04 @ 07:26:00

Tool Information

Drill Pipe:	Length: 3759.00 ft	Diameter: 3.80 inches	Volume: 52.73 bbl	Tool Weight:	2000.00 lb
Heavy Wt. Pipe:	Length: 0.00 ft	Diameter: 0.00 inches	Volume: 0.00 bbl	Weight set on Packer:	20000.00 lb
Drill Collar:	Length: 259.05 ft	Diameter: 2.25 inches	Volume: 1.27 bbl	Weight to Pull Loose:	10000.00 lb
			<u>Total Volume: 54.00 bbl</u>	Tool Chased	0.00 ft
Drill Pipe Above KB:	13.05 ft			String Weight: Initial	76000.00 lb
Depth to Top Packer:	4033.00 ft			Final	82000.00 lb
Depth to Bottom Packer:	ft				
Interval between Packers:	7.00 ft				
Tool Length:	35.00 ft				
Number of Packers:	2	Diameter: 6.75 inches			

Tool Comments:

Tool Description	Length (ft)	Serial No.	Position	Depth (ft)	Accum. Lengths
Shut-In Tool	5.00			4010.00	
Hydraulic Tool	5.00			4015.00	
Jars	6.00			4021.00	
Safety Joint	2.00			4023.00	
Packer	5.00			4028.00	28.00 Bottom Of Top Packer
Packer	5.00			4033.00	
Perforations	2.00			4035.00	
Recorder	1.00	8405	Inside	4036.00	
Recorder	1.00	8400	Outside	4037.00	
Bull Plug	3.00			4040.00	7.00 Bottom Packers & Anchor
Total Tool Length:	35.00				



DRILL STEM TEST REPORT

FLUID SUMMARY

Shelby Resources LLC.
 2717 Canel Blvd. Suite C
 Hays Kansas 67601
 ATTN: Chris Gottschalk

Buster #1-10
10/22S/16W Pawnee
 Job Ticket: 15651 **DST#: 2**
 Test Start: 2011.02.04 @ 07:26:00

Mud and Cushion Information

Mud Type: Gel Chem	Cushion Type:	Oil API:	deg API
Mud Weight: 9.00 lb/gal	Cushion Length: ft	Water Salinity:	ppm
Viscosity: 68.00 sec/qt	Cushion Volume: bbl		
Water Loss: 8.00 in ³	Gas Cushion Type:		
Resistivity: ohm.m	Gas Cushion Pressure: psia		
Salinity: 9200.00 ppm			
Filter Cake: 1.00 inches			

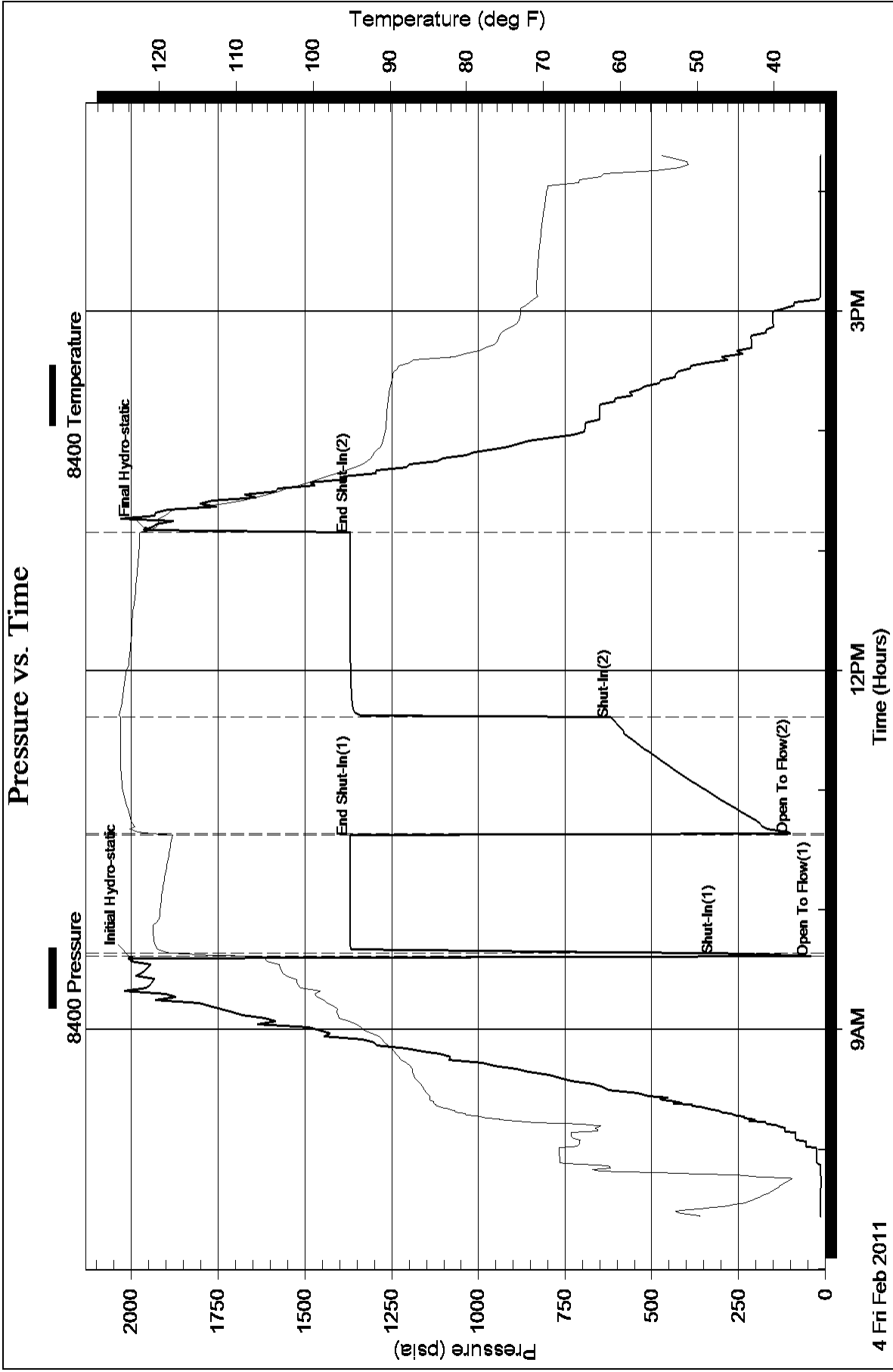
Recovery Information

Recovery Table

Length ft	Description	Volume bbl
698.00	Clean Gassy Oil 100%	7.431
315.00	Slightly Mud cut Oilly Water	4.419
0.00	Oil 10% Mud 15% Water 75%	0.000
252.00	Slightly Oil cut Water	3.535
0.00	Oil 6% Water 94%	0.000
126.00	Oil Spotted Water	1.767
0.00	Oil 1% Water 99%	0.000
0.00	Chlorides were 33,000.0	0.000
0.00	Resistivity w as .21 @68 degrees	0.000
0.00	Gravity of Oil corrected w as 41	0.000

Total Length: 1391.00 ft Total Volume: 17.152 bbl
 Num Fluid Samples: 0 Num Gas Bombs: 0 Serial #:
 Laboratory Name: Laboratory Location:
 Recovery Comments:

Pressure vs. Time



Pressure vs. Time

