



DRILL STEM TEST REPORT

Woolsey Operating Company L.L.C.

Miller D # 1

125 North Market Suite 1000
Wichita, Kansas 67202-1729

14-34s-11w Barber

Job Ticket: 16553

DST#: 1

ATTN: Scott Alberg

Test Start: 2011.06.09 @ 01:00:00

GENERAL INFORMATION:

Formation: **Mississippi**

Deviated: No Whipstock: ft (KB)

Time Tool Opened: 00:00:00

Time Test Ended: 00:00:00

Test Type: Conventional Bottom Hole (Initial)

Tester: Gene Budig

Unit No: 3335-106

Interval: 4524.00 ft (KB) To 4640.00 ft (KB) (TVD)

Reference Elevations: 1384.00 ft (KB)

Total Depth: 4640.00 ft (KB) (TVD)

1375.00 ft (CF)

Hole Diameter: 7.88 inches Hole Condition: Fair

KB to GR/CF: 9.00 ft

Serial #: 8524 Inside

Press @ RunDepth: 884.08 psia @ 4635.65 ft (KB)

Capacity: 5000.00 psia

Start Date: 2011.06.09

End Date: 2011.06.09

Last Calib.: 2011.06.09

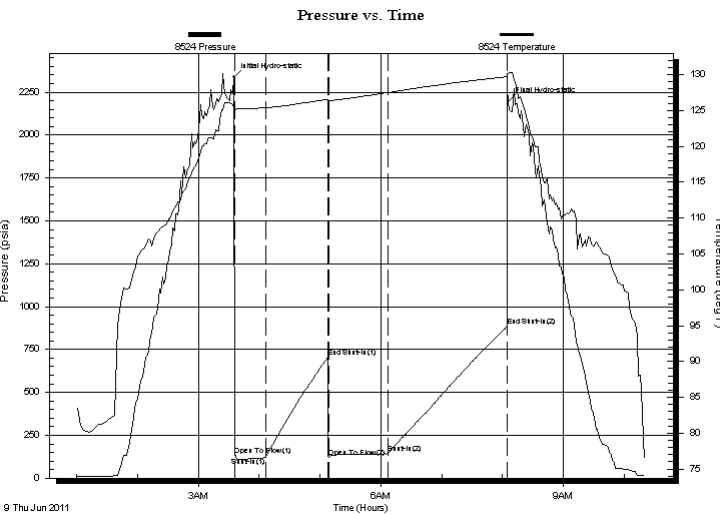
Start Time: 01:00:00

End Time: 10:21:00

Time On Btm: 2011.06.09 @ 03:35:00

Time Off Btm: 2011.06.09 @ 08:05:30

TEST COMMENT: 1st Opening 30 Minutes-Fair blow built to the bottom of a 5 gallon bucket in 3 minutes
1st Shut-In 60 Minutes-No blow back
2nd Opening 60 Minutes-Good blow built to the bottom of a 5 gallon bucket in 1 minute and decreased
2nd Shut-In 120 Minutes-No blow back



PRESSURE SUMMARY

Time (Min.)	Pressure (psia)	Temp (deg F)	Annotation
0	2337.43	125.53	Initial Hydro-static
1	131.43	125.08	Open To Flow (1)
32	119.78	125.39	Shut-In(1)
93	703.34	126.59	End Shut-In(1)
94	121.87	126.41	Open To Flow (2)
152	142.62	127.49	Shut-In(2)
270	884.08	129.71	End Shut-In(2)
271	2195.56	130.17	Final Hydro-static

Recovery

Length (ft)	Description	Volume (bbl)
70.00	Drilling Mud 100% Mud	0.34
60.00	Drilling Mud with a very slight show	0.30
0.00	1/2% Oil 99 1/2% Mud	0.00

Gas Rates

	Choke (inches)	Pressure (psia)	Gas Rate (Mcf/d)



DRILL STEM TEST REPORT

TOOL DIAGRAM

Woolsey Operating Company L.L.C.

Miller D # 1

125 North Market Suite 1000
Wichita, Kansas 67202-1729

14-34s-11w Barber

Job Ticket: 16553

DST#: 1

ATTN: Scott Alberg

Test Start: 2011.06.09 @ 01:00:00

Tool Information

Drill Pipe:	Length: 4277.00 ft	Diameter: 3.80 inches	Volume: 60.00 bbl	Tool Weight: 2000.00 lb
Heavy Wt. Pipe:	Length: ft	Diameter: 2.86 inches	Volume: - bbl	Weight set on Packer: 20000.00 lb
Drill Collar:	Length: 247.00 ft	Diameter: 2.25 inches	Volume: 1.21 bbl	Weight to Pull Loose: 70000.00 lb
			<u>Total Volume: - bbl</u>	Tool Chased 0.00 ft
Drill Pipe Above KB:	28.00 ft			String Weight: Initial 66000.00 lb
Depth to Top Packer:	4524.00 ft			Final 67000.00 lb
Depth to Bottom Packer:	ft			
Interval between Packers:	115.65 ft			
Tool Length:	143.65 ft			
Number of Packers:	2	Diameter: 6.75 inches		

Tool Comments:

Tool Description	Length (ft)	Serial No.	Position	Depth (ft)	Accum. Lengths
------------------	-------------	------------	----------	------------	----------------

SHut-InTool	5.00		Inside	4501.00	
Hydraulic Tool	5.00			4506.00	
Jars	6.00			4512.00	
Safety Joint	2.00			4514.00	
Packer	5.00			4519.00	28.00 Bottom Of Top Packer
Packer	5.00			4524.00	
Anchor	5.00			4529.00	
Change Over Sub	0.75			4529.75	
Drill Pipe	93.15		Outside	4622.90	
Change Over Sub	0.75		Outside	4623.65	
Anchor	11.00			4634.65	
Recorder	1.00	8524	Inside	4635.65	
Recorder	1.00	8525	Outside	4636.65	
Bullnose	3.00			4639.65	115.65 Bottom Packers & Anchor

Total Tool Length: 143.65



DRILL STEM TEST REPORT

FLUID SUMMARY

Woolsey Operating Company L.L.C.

Miller D # 1

125 North Market Suite 1000
Wichita, Kansas 67202-1729

14-34s-11w Barber

Job Ticket: 16553

DST#: 1

ATTN: Scott Alberg

Test Start: 2011.06.09 @ 01:00:00

Mud and Cushion Information

Mud Type: Gel Chem
Mud Weight: 9.00 lb/gal
Viscosity: 48.00 sec/qt
Water Loss: 9.59 in³
Resistivity: ohm.m
Salinity: 4000.00 ppm
Filter Cake: 1.00 inches

Cushion Type:
Cushion Length: ft
Cushion Volume: bbl
Gas Cushion Type:
Gas Cushion Pressure: psia

Oil API: deg API
Water Salinity: ppm

Recovery Information

Recovery Table

Length ft	Description	Volume bbl
70.00	Drilling Mud 100% Mud	0.344
60.00	Drilling Mud with a very slight show	0.295
0.00	1/2% Oil 99 1/2% Mud	0.000

Total Length: 130.00 ft Total Volume: 0.639 bbl

Num Fluid Samples: 0

Num Gas Bombs: 0

Serial #:

Laboratory Name:

Laboratory Location:

Recovery Comments:

Serial #: 8524

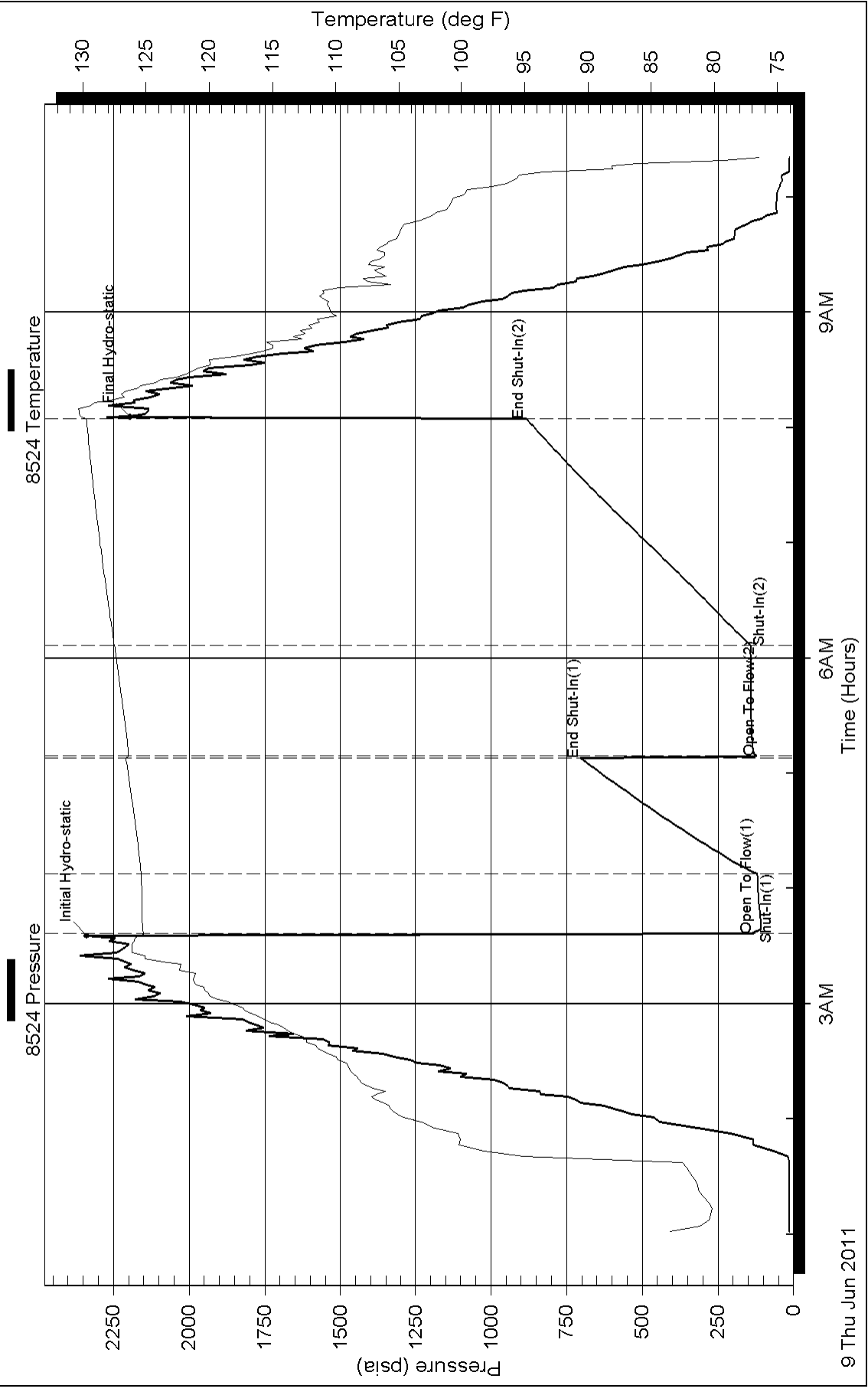
Inside

Woolsey Operating Company L.L.C.

14-34s-11w Barber

DST Test Number: 1

Pressure vs. Time





DRILL STEM TEST REPORT

Woolsey Operating Company L.L.C.

Miller D # 1

125 North Market Suite 1000
Wichita, Kansas 67202-1729

14-34s-11w Barber

Job Ticket: 16554

DST#: 2

ATTN: Scott Alberg

Test Start: 2011.06.10 @ 08:00:00

GENERAL INFORMATION:

Formation: **Mississippi**
 Deviated: No Whipstock: ft (KB)
 Test Type: Conventional Bottom Hole (Initial)
 Time Tool Opened: 00:00:00 Tester: Gene Budig
 Time Test Ended: 00:00:00 Unit No: 3335 -106 pratt
 Interval: **4648.00 ft (KB) To 4690.00 ft (KB) (TVD)** Reference Elevations: 1384.00 ft (KB)
 Total Depth: 4690.00 ft (KB) (TVD) 1375.00 ft (CF)
 Hole Diameter: 7.88 inches Hole Condition: Fair KB to GR/CF: 9.00 ft

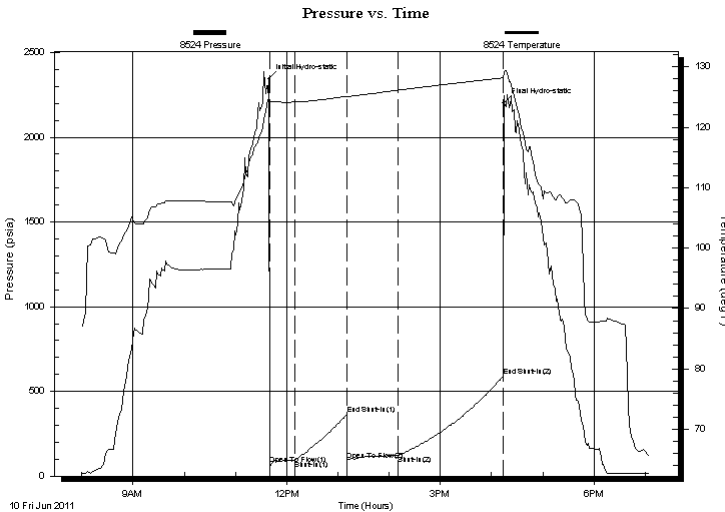
Serial #: 8524

Inside

Press @ Run Depth: 591.18 psia @ 4686.00 ft (KB) Capacity: 5000.00 psia
 Start Date: 2011.06.10 End Date: 2011.06.10 Last Calib.: 2011.06.10
 Start Time: 08:00:00 End Time: 19:05:00 Time On Btm: 2011.06.10 @ 11:39:30
 Time Off Btm: 2011.06.10 @ 16:14:30

TEST COMMENT: 1st Opening 30 Minutes-Weak building blow built to 6 1/2 inches into the water
 1st Shut-In 60 Minutes-No blow back
 2nd Opening 60 Minutes-Fair blow built to the bottom of a 5 gallon bucket in 11 minutes
 2nd Shut-In 120 Minutes-No blow back

PRESSURE SUMMARY



Time (Min.)	Pressure (psia)	Temp (deg F)	Annotation
0	2345.19	124.70	Initial Hydro-static
1	69.67	124.14	Open To Flow (1)
31	94.40	124.17	Shut-In(1)
91	363.20	125.12	End Shut-In(1)
91	92.68	125.07	Open To Flow (2)
151	121.67	126.13	Shut-In(2)
274	591.18	128.18	End Shut-In(2)
275	2204.32	129.21	Final Hydro-static

Recovery

Length (ft)	Description	Volume (bbl)
70.00	Drilling mud	0.34
60.00	Slightt oil cut mud	0.30
0.00	5%Gas 5%Oil 90%Mud	0.00
0.00	Areal good show of oil bet een the tools	0.00

Gas Rates

Choke (inches)	Pressure (psia)	Gas Rate (Mcf/d)



DRILL STEM TEST REPORT

TOOL DIAGRAM

Woolsey Operating Company L.L.C.

Miller D # 1

125 North Market Suite 1000
Wichita, Kansas 67202-1729

14-34s-11w Barber

Job Ticket: 16554

DST#: 2

ATTN: Scott Alberg

Test Start: 2011.06.10 @ 08:00:00

Tool Information

Drill Pipe:	Length: 4398.00 ft	Diameter: 3.80 inches	Volume: 61.69 bbl	Tool Weight: 2000.00 lb
Heavy Wt. Pipe:	Length: 0.00 ft	Diameter: 2.76 inches	Volume: 0.00 bbl	Weight set on Packer: 20000.00 lb
Drill Collar:	Length: 247.00 ft	Diameter: 2.25 inches	Volume: 1.21 bbl	Weight to Pull Loose: 74000.00 lb
			<u>Total Volume: 62.90 bbl</u>	Tool Chased 0.00 ft
Drill Pipe Above KB:	25.00 ft			String Weight: Initial 66000.00 lb
Depth to Top Packer:	4648.00 ft			Final 67000.00 lb
Depth to Bottom Packer:	ft			
Interval between Packers:	42.00 ft			
Tool Length:	70.00 ft			
Number of Packers:	2	Diameter: 6.75 inches		

Tool Comments:

Tool Description	Length (ft)	Serial No.	Position	Depth (ft)	Accum. Lengths
SHut-InTool	5.00		Inside	4625.00	
Hydraulic Tool	5.00			4630.00	
Jars	6.00			4636.00	
Safety Joint	2.00			4638.00	
Packer	5.00			4643.00	28.00 Bottom Of Top Packer
Packer	5.00			4648.00	
Anchor	37.00			4685.00	
Recorder	1.00	8524	Inside	4686.00	
Recorder	1.00	8525	Outside	4687.00	
Bullnose	3.00			4690.00	42.00 Bottom Packers & Anchor
Total Tool Length:	70.00				



DRILL STEM TEST REPORT

FLUID SUMMARY

Woolsey Operating Company L.L.C.

Miller D # 1

125 North Market Suite 1000
Wichita, Kansas 67202-1729

14-34s-11w Barber

Job Ticket: 16554

DST#: 2

ATTN: Scott Alberg

Test Start: 2011.06.10 @ 08:00:00

Mud and Cushion Information

Mud Type: Gel Chem
Mud Weight: 9.00 lb/gal
Viscosity: 64.00 sec/qt
Water Loss: 9.00 in³
Resistivity: ohm.m
Salinity: 4000.00 ppm
Filter Cake: inches

Cushion Type:
Cushion Length: ft
Cushion Volume: bbl
Gas Cushion Type:
Gas Cushion Pressure: psia

Oil API: deg API
Water Salinity: ppm

Recovery Information

Recovery Table

Length ft	Description	Volume bbl
70.00	Drilling mud	0.344
60.00	Slightlt oil cut mud	0.295
0.00	5%Gas 5%Oil 90%Mud	0.000
0.00	Areal good show of oil betwe en the tools	0.000

Total Length: 130.00 ft Total Volume: 0.639 bbl

Num Fluid Samples: 0

Num Gas Bombs: 0

Serial #:

Laboratory Name:

Laboratory Location:

Recovery Comments:

Serial #: 8524

Inside

Woolsey Operating Company L.L.C.

14-34s-11w Barber

DST Test Number: 2

