



TRILOBITE TESTING, INC.

DRILL STEM TEST REPORT

American Energies Corp.

155 N Market
STE 710
Wichita Ks. 67202+1821
ATTN: Dave Goldak

Gartrell #1-35

35-6s-20w Rooks

Job Ticket: 44252

DST#: 1

Test Start: 2011.09.20 @ 06:40:05

GENERAL INFORMATION:

Formation: **Tor & Lans "A&B"**

Deviated: No Whipstock: ft (KB)

Time Tool Opened: 08:04:40

Time Test Ended: 12:42:20

Test Type: Conventional Bottom Hole (Initial)

Tester: Andy Carreira

Unit No: 39

Interval: 3346.00 ft (KB) To 3392.00 ft (KB) (TVD)

Reference Elevations: 2155.00 ft (KB)

Total Depth: 3392.00 ft (KB) (TVD)

2150.00 ft (CF)

Hole Diameter: 7.88 inches Hole Condition: Fair

KB to GR/CF: 5.00 ft

Serial #: 8352 Outside

Press @ Run Depth: 93.14 psig @ 3353.00 ft (KB)

Capacity: 8000.00 psig

Start Date: 2011.09.20 End Date: 2011.09.20

Last Calib.: 2011.09.20

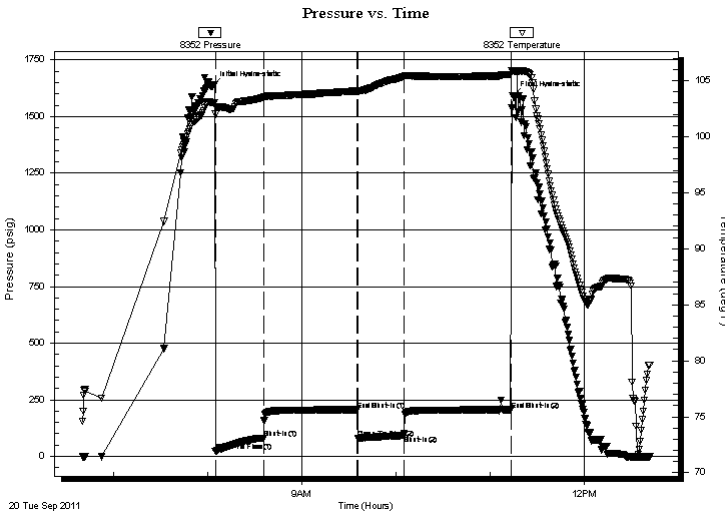
Start Time: 06:40:05 End Time: 12:42:20

Time On Btm: 2011.09.20 @ 08:03:00

Time Off Btm: 2011.09.20 @ 11:14:29

TEST COMMENT: IF:(30min) Fair, Built to 4 inches
IS:(60min) No Return
FF:(30min) Weak surface blow
FS:(60min) No Return

PRESSURE SUMMARY



Time (Min.)	Pressure (psig)	Temp (deg F)	Annotation
0	1634.92	103.06	Initial Hydro-static
2	22.72	102.01	Open To Flow (1)
33	80.80	103.51	Shut-In(1)
93	206.10	104.08	End Shut-In(1)
93	81.45	103.99	Open To Flow (2)
122	93.14	105.36	Shut-In(2)
191	206.29	105.55	End Shut-In(2)
192	1591.48	105.87	Final Hydro-static

Recovery

Length (ft)	Description	Volume (bbl)
130.00	MW m=30% w=70%	0.70

Gas Rates

Choke (inches)	Pressure (psig)	Gas Rate (Mcf/d)



**TRILOBITE
TESTING, INC.**

DRILL STEM TEST REPORT

FLUID SUMMARY

American Energies Corp.

Gartrell #1-35

155 N Market
STE 710
Wichita Ks. 67202+1821
ATTN: Dave Goldak

35-6s-20w Rooks

Job Ticket: 44252

DST#: 1

Test Start: 2011.09.20 @ 06:40:05

Mud and Cushion Information

Mud Type: Gel Chem

Cushion Type:

Oil API:

deg API

Mud Weight: 9.00 lb/gal

Cushion Length:

ft

Water Salinity:

7000 ppm

Viscosity: 58.00 sec/qt

Cushion Volume:

bbf

Water Loss: 6.20 in³

Gas Cushion Type:

Resistivity: ohm.m

Gas Cushion Pressure:

psig

Salinity: 600.00 ppm

Filter Cake: inches

Recovery Information

Recovery Table

Length ft	Description	Volume bbf
130.00	MW m=30% w =70%	0.696

Total Length: 130.00 ft

Total Volume: 0.696 bbf

Num Fluid Samples: 0

Num Gas Bombs: 0

Serial #:

Laboratory Name:

Laboratory Location:

Recovery Comments:

