



**TRILOBITE TESTING, INC.**

# DRILL STEM TEST REPORT

Shakespeare Oil Co INC

202 W Main st  
Salem IL 62881 + 1519

ATTN: Don Williams

**Scheetz 2-16**

**16-13s-32w-Logan**

Job Ticket: 43211

**DST#: 6**

Test Start: 2011.09.23 @ 23:36:15

## GENERAL INFORMATION:

Formation: **Johnson**

Deviated: No Whipstock: ft (KB)

Time Tool Opened: 01:48:30

Time Test Ended: 08:10:00

Test Type: Conventional Bottom Hole (Reset)

Tester: Mike Roberts

Unit No: 48

**Interval: ft (KB) To ft (KB) (TVD)**

Reference Elevations: 3033.00 ft (KB)

Total Depth: 4604.00 ft (KB) (TVD)

3023.00 ft (CF)

Hole Diameter: 7.88 inches Hole Condition: Fair

KB to GR/CF: 10.00 ft

**Serial #: 8646 Outside**

Press @ Run Depth: 114.34 psig @ 4597.00 ft (KB)

Capacity: 8000.00 psig

Start Date: 2011.09.23 End Date: 2011.09.24

Last Calib.: 2011.09.24

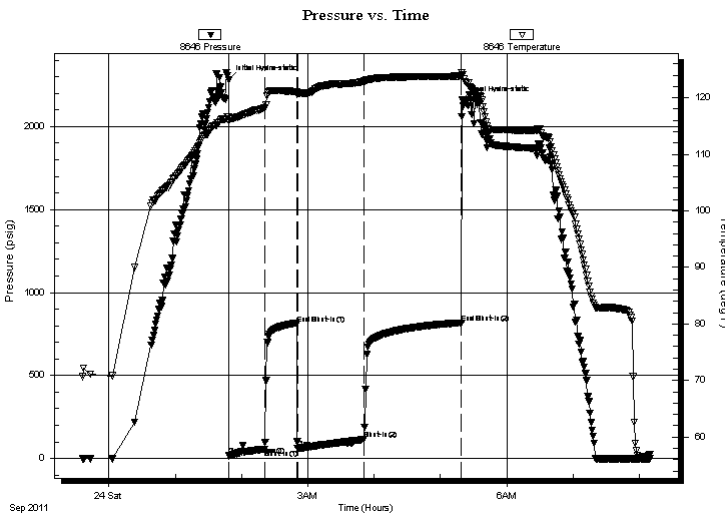
Start Time: 23:36:15 End Time: 08:10:00

Time On Btm: 2011.09.24 @ 01:48:15

Time Off Btm: 2011.09.24 @ 05:19:45

**TEST COMMENT:** IF: Built to 6" blow  
IS: No return blow  
FF: Built to 7" blow  
FS: No return blow

## PRESSURE SUMMARY



Time (Min.)	Pressure (psig)	Temp (deg F)	Annotation
0	2281.24	116.67	Initial Hydro-static
1	17.27	115.86	Open To Flow (1)
33	56.53	118.21	Shut-In(1)
62	811.21	121.06	End Shut-In(1)
63	59.88	120.81	Open To Flow (2)
122	114.34	122.83	Shut-In(2)
211	818.19	123.80	End Shut-In(2)
212	2159.27	124.10	Final Hydro-static

## Recovery

Length (ft)	Description	Volume (bbl)
226.00	m 100% m	3.17

\* Recovery from multiple tests

## Gas Rates

Choke (inches)	Pressure (psig)	Gas Rate (Mcf/d)



**TRILOBITE  
TESTING, INC.**

# DRILL STEM TEST REPORT

**FLUID SUMMARY**

Shakespeare Oil Co INC

**Scheetz 2-16**

202 W Main st  
Salem IL 62881 + 1519

**16-13s-32w-Logan**

Job Ticket: 43211

**DST#: 6**

ATTN: Don Williams

Test Start: 2011.09.23 @ 23:36:15

## Mud and Cushion Information

Mud Type: Gel Chem

Cushion Type:

Oil API:

0 deg API

Mud Weight: 9.00 lb/gal

Cushion Length:

ft

Water Salinity:

0 ppm

Viscosity: 49.00 sec/qt

Cushion Volume:

bbbl

Water Loss: 10.00 in<sup>3</sup>

Gas Cushion Type:

Resistivity: 0.00 ohm.m

Gas Cushion Pressure:

psig

Salinity: 5200.00 ppm

Filter Cake: 1.00 inches

## Recovery Information

Recovery Table

Length ft	Description	Volume bbl
226.00	m 100%m	3.170

Total Length: 226.00 ft      Total Volume: 3.170 bbl

Num Fluid Samples: 0

Num Gas Bombs: 0

Serial #:

Laboratory Name:

Laboratory Location:

Recovery Comments:

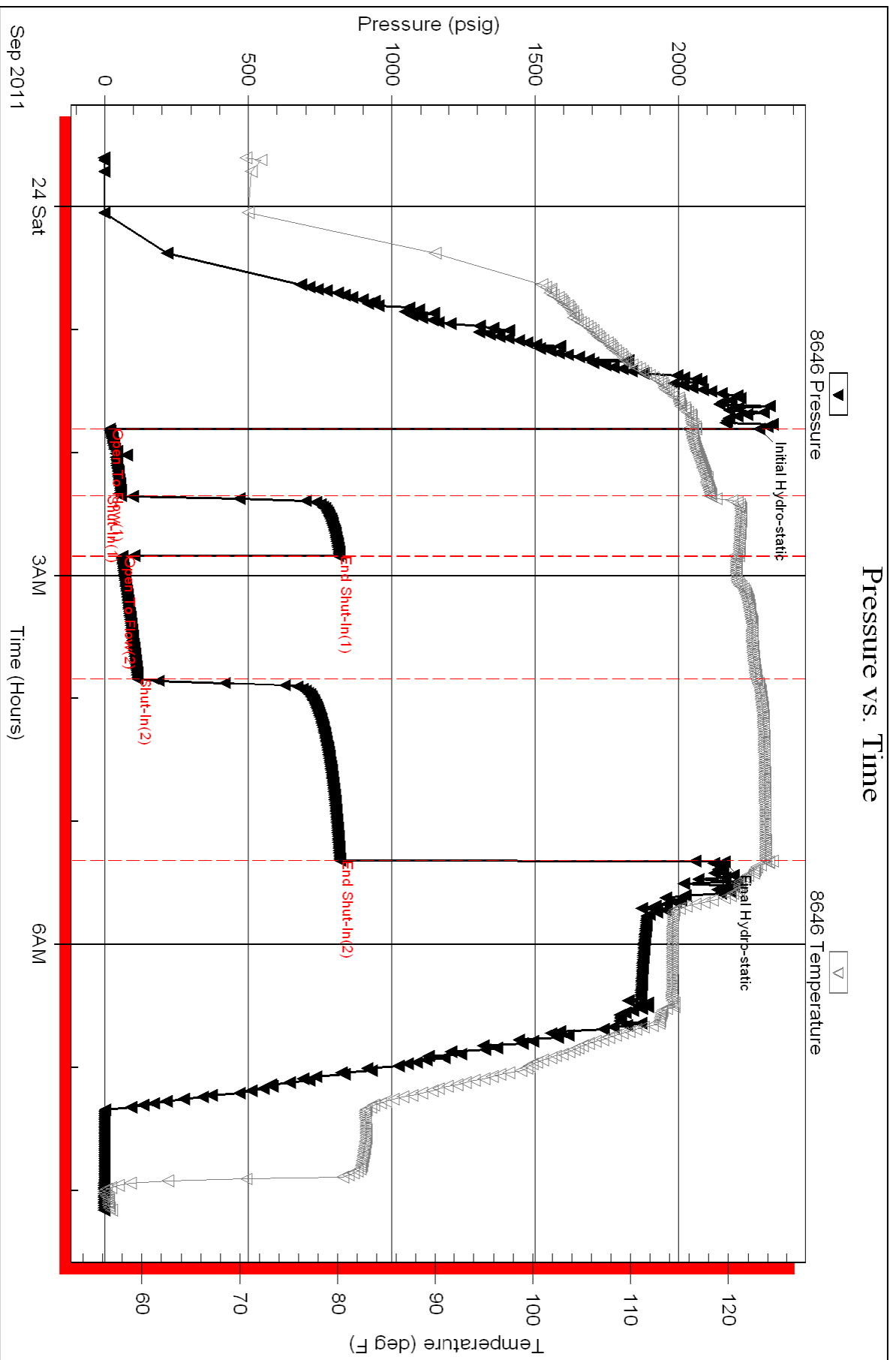
Serial #: 8646

Outside Shakespeare Oil Co INC

16-13s-32w -Logan

DST Test Number: 6

### Pressure vs. Time



Triobite Testing, Inc

Ref. No: 43211

Printed: 2011.09.24 @ 09:38:47