



**TRILOBITE  
TESTING, INC.**

# DRILL STEM TEST REPORT

DOWNING & NELSON OIL CO INC

**13-14S-19W ELLIS**

PO BOX 1019  
HAYS KS 67601

**JOHNSON # 2-13**

Job Ticket: 44372

**DST#: 1**

ATTN: MARC DOWNING

Test Start: 2011.10.03 @ 07:30:00

## GENERAL INFORMATION:

Formation: **LKC "C&D"**

Deviated: No Whipstock: ft (KB)

Time Tool Opened: 09:10:40

Time Test Ended: 13:35:20

Test Type: Conventional Bottom Hole (Initial)

Tester: RANDY WILLIAMS

Unit No: 37

**Interval: 3477.00 ft (KB) To 3524.00 ft (KB) (TVD)**

Reference Elevations: 2159.00 ft (KB)

Total Depth: 3524.00 ft (KB) (TVD)

2151.00 ft (CF)

Hole Diameter: 6.78 inches Hole Condition: Fair

KB to GR/CF: 8.00 ft

**Serial #: 6751 Outside**

Press @ Run Depth: 67.88 psig @ 3478.00 ft (KB)

Capacity: 8000.00 psig

Start Date: 2011.10.03

End Date: 2011.10.03

Last Calib.: 2011.10.03

Start Time: 07:30:02

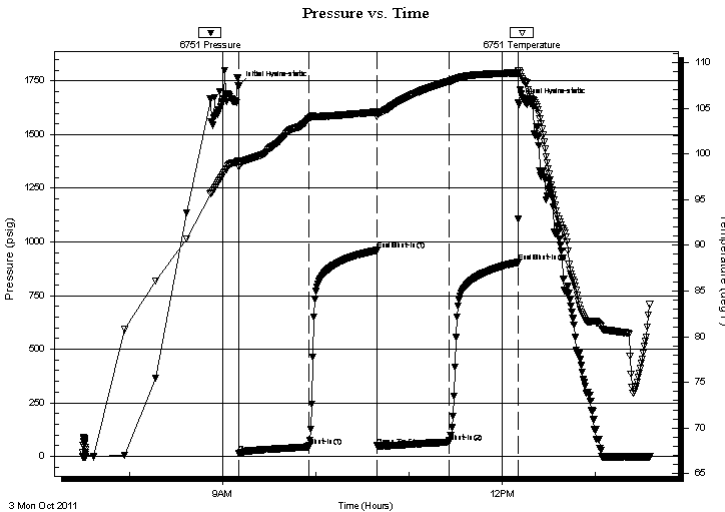
End Time: 13:35:20

Time On Btm: 2011.10.03 @ 09:10:30

Time Off Btm: 2011.10.03 @ 12:10:20

**TEST COMMENT:** IF=45, WBB BUILT TO 6 INCH'S  
IS=45, NBB  
FF=45, WBB BUILT TO 5 INCH'S  
FS=45, NBB

## PRESSURE SUMMARY



Time (Min.)	Pressure (psig)	Temp (deg F)	Annotation
0	1728.18	99.27	Initial Hydro-static
1	13.27	98.59	Open To Flow (1)
45	45.31	103.84	Shut-In(1)
89	961.02	104.61	End Shut-In(1)
89	48.83	104.11	Open To Flow (2)
136	67.88	107.93	Shut-In(2)
180	905.22	108.87	End Shut-In(2)
180	1649.75	109.15	Final Hydro-static

## Recovery

Length (ft)	Description	Volume (bbl)
150.00	MCW, 20% MUD, 80% WATER	1.82

## Gas Rates

Choke (inches)	Pressure (psig)	Gas Rate (Mcf/d)



**TRILOBITE  
TESTING, INC.**

# DRILL STEM TEST REPORT

**FLUID SUMMARY**

DOWNING & NELSON OIL CO INC

**13-14S-19W ELLIS**

PO BOX 1019  
HAYS KS 67601

**JOHNSON # 2-13**

Job Ticket: 44372

**DST#: 1**

ATTN: MARC DOWNING

Test Start: 2011.10.03 @ 07:30:00

## Mud and Cushion Information

Mud Type: Gel Chem	Cushion Type:	Oil API:	deg API
Mud Weight: 9.00 lb/gal	Cushion Length: ft	Water Salinity:	39000 ppm
Viscosity: 54.00 sec/qt	Cushion Volume: bbl		
Water Loss: 9.18 in <sup>3</sup>	Gas Cushion Type:		
Resistivity: ohm.m	Gas Cushion Pressure: psig		
Salinity: 4000.00 ppm			
Filter Cake: 2.00 inches			

## Recovery Information

Recovery Table

Length ft	Description	Volume bbl
150.00	MCW, 20% MUD, 80% WATER	1.822

Total Length: 150.00 ft      Total Volume: 1.822 bbl

Num Fluid Samples: 0      Num Gas Bombs: 0      Serial #:

Laboratory Name:      Laboratory Location:

Recovery Comments: CHLORIDES= .077 @ 87F= 39,000

