

DRILL STEM TEST REPORT

F.G. Holl
 9431 East Central Suite 100
 Wichita Kansas 67206
 ATTN: Ryan Greenbaum

Neeland Trust #1-21
21-22s-14w-Stafford
 Job Ticket: 17227 DST#: 2
 Test Start: 2011.10.19 @ 12:06:00

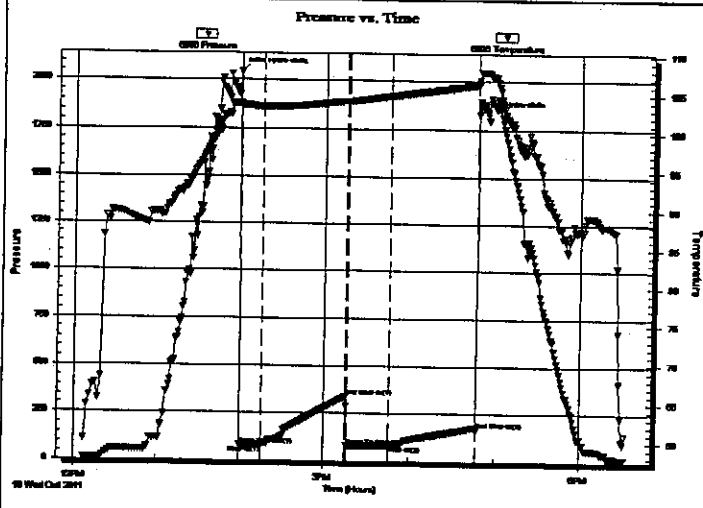
GENERAL INFORMATION:

Formation: **Viola**
 Deviated: **No** Whipstock: ft (KB)
 Time Tool Opened: 14:00:00
 Time Test Ended: 18:32:30
 Interval: **3838.00 ft (KB) To 3924.00 ft (KB) (TVD)**
 Total Depth: **3924.00 ft (KB) (TVD)**
 Hole Diameter: **7.88 inches** Hole Condition: **Fair**
 Test Type: **Conventional Bottom Hole (Initial)**
 Tester: **Dustin Ellis**
 Unit No: **3315-GB-60**
 Reference Elevations: **1956.00 ft (KB)**
1948.00 ft (CF)
 KB to GR/CF: **8.00 ft**

Serial #: 6806

Inside
 Press@RunDepth: **82.79 psia @ 3920.50 ft (KB)**
 Start Date: **2011.10.19** End Date: **2011.10.19**
 Start Time: **12:07:00** End Time: **18:32:30**
 Capacity: **5000.00 psia**
 Last Calib.: **2011.10.19**
 Time On Btm: **2011.10.19 @ 13:59:30**
 Time Off Btm: **2011.10.19 @ 16:47:30**

TEST COMMENT: 1st open 15 minutes Weak blow built to 1.5 inches into a 5 gallon bucket
 1st shut in 60 minutes No blow back
 2nd open 30 minutes No blow dead
 2nd shut in 60 minutes No blow back



PRESSURE SUMMARY			
Time (Min.)	Pressure (psia)	Temp (deg F)	Annotation
0	2043.99	103.70	Initial Hydro-static
1	81.70	103.38	Open To Flow (1)
16	80.24	103.37	Shut-In(1)
76	338.54	104.12	End Shut-In(1)
77	81.68	104.08	Open To Flow (2)
106	82.79	104.77	Shut-In(2)
168	168.77	106.21	End Shut-In(2)
168	1831.07	106.80	Final Hydro-static

Recovery

Length (ft)	Description	Volume (bbl)
20.00	Drilling mud 100%	0.28

Gas Rates

	Choke (inches)	Pressure (psia)	Gas Rate (Mcf/d)

