



**TRILOBITE TESTING, INC.**

# DRILL STEM TEST REPORT

Grand Mesa Operating  
 1700 N Waterfront PKWY  
 BLDG 600  
 Wichita KS 67206  
 ATTN: Kent Matson

**21-16-33 Scott Co**  
**K-R-K - # 1-21**  
 Job Ticket: 45454 **DST#: 1**  
 Test Start: 2011.10.18 @ 04:49:00

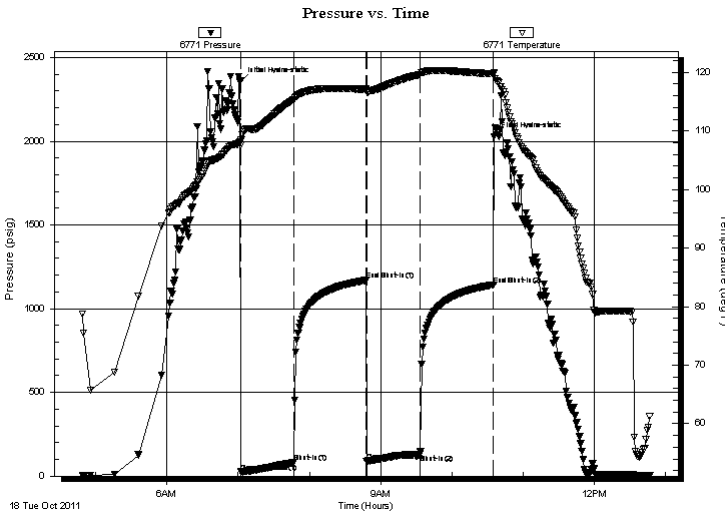
## GENERAL INFORMATION:

Formation: **Pleasanton**  
 Deviated: No Whipstock: ft (KB)  
 Time Tool Opened: 07:02:00  
 Time Test Ended: 12:46:30  
 Interval: **4380.00 ft (KB) To 4400.00 ft (KB) (TVD)**  
 Total Depth: 4400.00 ft (KB) (TVD)  
 Hole Diameter: 7.88 inches Hole Condition: Fair  
 Test Type: Conventional Bottom Hole (Initial)  
 Tester: Shane McBride  
 Unit No: 55  
 Reference Elevations: 3076.00 ft (KB)  
 3065.00 ft (CF)  
 KB to GR/CF: 11.00 ft

**Serial #: 6771 Outside**  
 Press @ Run Depth: 132.36 psig @ 4381.00 ft (KB) Capacity: 8000.00 psig  
 Start Date: 2011.10.18 End Date: 2011.10.18 Last Calib.: 1899.12.30  
 Start Time: 04:49:00 End Time: 12:46:30 Time On Btm: 2011.10.18 @ 07:01:45  
 Time Off Btm: 2011.10.18 @ 10:35:30

**TEST COMMENT:** IF- Weak Surface Blow Built to 2 1/4"  
 IS- No Blow  
 FF- Weak Surface Blow Built to 1"  
 FS- No Blow

## PRESSURE SUMMARY



Time (Min.)	Pressure (psig)	Temp (deg F)	Annotation
0	2357.11	108.14	Initial Hydro-static
1	24.77	107.54	Open To Flow (1)
45	80.92	115.34	Shut-In(1)
106	1168.89	117.12	End Shut-In(1)
107	88.26	116.67	Open To Flow (2)
152	132.36	119.63	Shut-In(2)
214	1143.17	119.73	End Shut-In(2)
214	2028.23	119.89	Final Hydro-static

## Recovery

Length (ft)	Description	Volume (bbl)
70.00	WCM 30%w 70%m	0.34
175.00	MCW 20%m 80%w	0.95

## Gas Rates

Choke (inches)	Pressure (psig)	Gas Rate (Mcf/d)



**TRILOBITE  
TESTING, INC.**

# DRILL STEM TEST REPORT

## FLUID SUMMARY

Grand Mesa Operating

**21-16-33 Scott Co**

1700 N Waterfront PKWY  
BLDG 600  
Wichita KS 67206  
ATTN: Kent Matson

**K-R-K - # 1-21**

Job Ticket: 45454

**DST#: 1**

Test Start: 2011.10.18 @ 04:49:00

### Mud and Cushion Information

Mud Type: Gel Chem

Cushion Type:

Oil API:

deg API

Mud Weight: 9.00 lb/gal

Cushion Length:

ft

Water Salinity:

37000 ppm

Viscosity: 57.00 sec/qt

Cushion Volume:

bbbl

Water Loss: 9.54 in<sup>3</sup>

Gas Cushion Type:

Resistivity: ohm.m

Gas Cushion Pressure:

psig

Salinity: 4700.00 ppm

Filter Cake: 1.00 inches

### Recovery Information

Recovery Table

Length ft	Description	Volume bbl
70.00	WCM 30%w 70%m	0.344
175.00	MCW 20%m 80%w	0.952

Total Length: 245.00 ft      Total Volume: 1.296 bbl

Num Fluid Samples: 0

Num Gas Bombs: 0

Serial #:

Laboratory Name:

Laboratory Location:

Recovery Comments: RW is .233 @ 58f = 37000

