



**TRILOBITE
TESTING, INC.**

DRILL STEM TEST REPORT

Grand Mesa Operating

21-16-33 Scott Co

1700 N Waterfront PKWY
BLDG 600
Wichita KS 67206
ATTN: Kent Matson

K-R-K - # 1-21

Job Ticket: 45455

DST#: 2

Test Start: 2011.10.19 @ 14:10:00

GENERAL INFORMATION:

Formation: **Johnson / Atoka**

Deviated: No Whipstock: ft (KB)

Time Tool Opened: 16:21:30

Time Test Ended: 19:42:45

Test Type: Conventional Bottom Hole (Reset)

Tester: Shane McBride

Unit No: 55

Interval: 4608.00 ft (KB) To 4695.00 ft (KB) (TVD)

Reference Elevations: 3076.00 ft (KB)

Total Depth: 4695.00 ft (KB) (TVD)

3065.00 ft (CF)

Hole Diameter: 7.88 inches Hole Condition: Fair

KB to GR/CF: 11.00 ft

Serial #: 6771 Outside

Press @ Run Depth: 56.44 psig @ 4609.00 ft (KB)

Capacity: 8000.00 psig

Start Date: 2011.10.19

End Date: 2011.10.19

Last Calib.: 2011.10.19

Start Time: 14:10:00

End Time: 19:42:45

Time On Btm: 2011.10.19 @ 16:21:00

Time Off Btm: 2011.10.19 @ 17:37:45

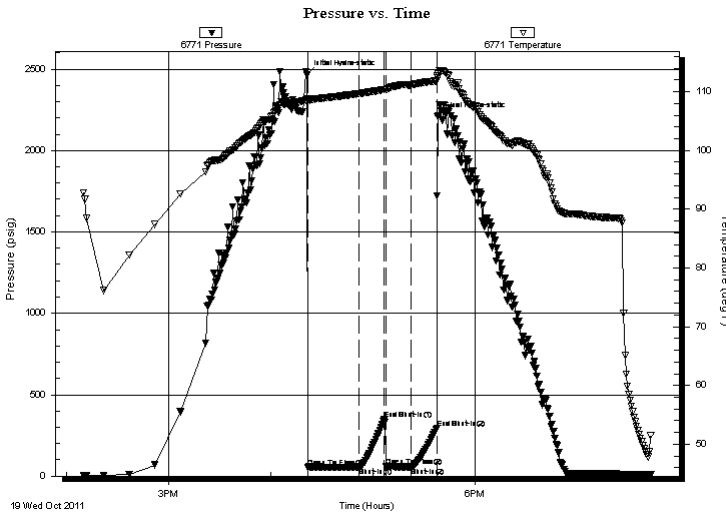
TEST COMMENT: IF- Weak Surface Blow Died in 12 1/2min

IS- No Blow

FF- No Blow

FS- No Blow

PRESSURE SUMMARY



Time (Min.)	Pressure (psig)	Temp (deg F)	Annotation
0	2463.34	108.73	Initial Hydro-static
1	53.72	108.46	Open To Flow (1)
31	56.36	109.68	Shut-In(1)
46	349.55	110.38	End Shut-In(1)
47	59.77	110.34	Open To Flow (2)
62	56.44	111.14	Shut-In(2)
77	295.18	111.86	End Shut-In(2)
77	2207.75	112.41	Final Hydro-static

Recovery

Length (ft)	Description	Volume (bbl)
61.00	Mud 100% m	0.30
0.00	Few Oil Spots in Tool	0.00

* Recovery from multiple tests

Gas Rates

Choke (inches)	Pressure (psig)	Gas Rate (Mcf/d)



**TRILOBITE
TESTING, INC.**

DRILL STEM TEST REPORT

FLUID SUMMARY

Grand Mesa Operating

21-16-33 Scott Co

1700 N Waterfront PKWY
BLDG 600
Wichita KS 67206
ATTN: Kent Matson

K-R-K - # 1-21

Job Ticket: 45455

DST#: 2

Test Start: 2011.10.19 @ 14:10:00

Mud and Cushion Information

Mud Type: Gel Chem

Mud Weight: 10.00 lb/gal

Viscosity: 55.00 sec/qt

Water Loss: 9.57 in³

Resistivity: ohm.m

Salinity: 7000.00 ppm

Filter Cake: 1.00 inches

Cushion Type:

Cushion Length: ft

Cushion Volume: bbl

Gas Cushion Type:

Gas Cushion Pressure: psig

Oil API:

Water Salinity: deg API

ppm

Recovery Information

Recovery Table

Length ft	Description	Volume bbl
61.00	Mud 100%m	0.300
0.00	Few Oil Spots in Tool	0.000

Total Length: 61.00 ft Total Volume: 0.300 bbl

Num Fluid Samples: 0

Num Gas Bombs: 0

Serial #:

Laboratory Name:

Laboratory Location:

Recovery Comments:

