



**TRILOBITE
TESTING, INC.**

DRILL STEM TEST REPORT

Grand Mesa Operating
1700 N Waterfront PKWY
BLDG 600
Wichita KS 67206
ATTN: Kent Matson

21-16-33 Scott Co
K-R-K - # 1-21
Job Ticket: 45457 **DST#: 4**
Test Start: 2011.10.20 @ 21:44:00

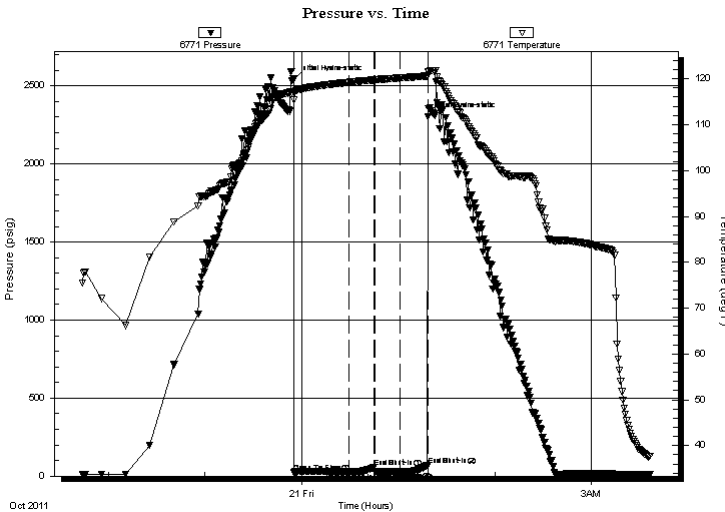
GENERAL INFORMATION:

Formation: **Mississippi**
Deviated: No Whipstock: ft (KB)
Time Tool Opened: 23:55:15
Time Test Ended: 03:36:30
Interval: **4772.00 ft (KB) To 4850.00 ft (KB) (TVD)**
Total Depth: 4850.00 ft (KB) (TVD)
Hole Diameter: 7.88 inches Hole Condition: Good
Test Type: Conventional Bottom Hole (Reset)
Tester: Shane McBride
Unit No: 55
Reference Elevations: 3076.00 ft (KB)
3065.00 ft (CF)
KB to GR/CF: 11.00 ft

Serial #: 6771 Outside
Press @ Run Depth: 26.35 psig @ 4773.00 ft (KB) Capacity: 8000.00 psig
Start Date: 2011.10.20 End Date: 2011.10.21 Last Calib.: 1899.12.30
Start Time: 21:44:00 End Time: 03:36:30 Time On Btm: 2011.10.20 @ 23:55:00
Time Off Btm: 2011.10.21 @ 01:18:30

TEST COMMENT: IF- Weak Surface Blow Died in 15min
IS- No Blow
FF- No Blow
FS- No Blow

PRESSURE SUMMARY



Time (Min.)	Pressure (psig)	Temp (deg F)	Annotation
0	2543.52	116.94	Initial Hydro-static
1	24.26	115.34	Open To Flow (1)
35	27.02	119.23	Shut-In(1)
50	57.02	119.76	End Shut-In(1)
51	30.15	119.76	Open To Flow (2)
66	26.35	120.17	Shut-In(2)
84	71.37	120.62	End Shut-In(2)
84	2304.23	121.61	Final Hydro-static

Recovery

Length (ft)	Description	Volume (bbl)
10.00	Mud 100% m	0.05

* Recovery from multiple tests

Gas Rates

Choke (inches)	Pressure (psig)	Gas Rate (Mcf/d)



**TRILOBITE
TESTING, INC.**

DRILL STEM TEST REPORT

FLUID SUMMARY

Grand Mesa Operating

21-16-33 Scott Co

1700 N Waterfront PKWY
BLDG 600
Wichita KS 67206
ATTN: Kent Matson

K-R-K - # 1-21

Job Ticket: 45457

DST#: 4

Test Start: 2011.10.20 @ 21:44:00

Mud and Cushion Information

Mud Type: Gel Chem

Cushion Type:

Oil API:

deg API

Mud Weight: 9.00 lb/gal

Cushion Length:

ft

Water Salinity:

ppm

Viscosity: 55.00 sec/qt

Cushion Volume:

bbbl

Water Loss: 8.77 in³

Gas Cushion Type:

Resistivity: ohm.m

Gas Cushion Pressure:

psig

Salinity: 6500.00 ppm

Filter Cake: 1.00 inches

Recovery Information

Recovery Table

Length ft	Description	Volume bbl
10.00	Mud 100%m	0.049

Total Length: 10.00 ft Total Volume: 0.049 bbl

Num Fluid Samples: 0

Num Gas Bombs: 0

Serial #:

Laboratory Name:

Laboratory Location:

Recovery Comments:

Serial #: 6771

Outside Grand Mesa Operating

K-R-K - #1-21

DST Test Number: 4

