



**TRILOBITE TESTING, INC.**

# DRILL STEM TEST REPORT

GRAND MESA OPERATING  
 1700 N WATERFRONT PKWY BLDG 600  
 WICHITA KS 67206  
 ATTN: John Goldsmith

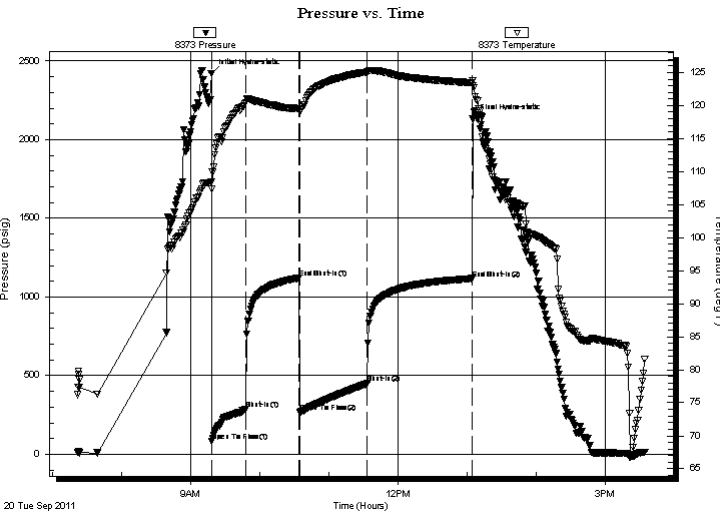
**DBY # 2-16**  
**16-16S-33W SCOTT**  
 Job Ticket: 43892 **DST#: 11**  
 Test Start: 2011.09.20 @ 07:22:00

## GENERAL INFORMATION:

Formation: **Morrow**  
 Deviated: No Whipstock: ft (KB)  
 Test Type: Conventional Bottom Hole (Reset)  
 Time Tool Opened: 09:18:10 Tester: Will MacLean  
 Time Test Ended: 15:33:54 Unit No: 35  
 Interval: **4652.00 ft (KB) To 4730.00 ft (KB) (TVD)** Reference Elevations: 3048.00 ft (KB)  
 Total Depth: 4730.00 ft (KB) (TVD) 3037.00 ft (CF)  
 Hole Diameter: 6.88 inches Hole Condition: Fair KB to GR/CF: 11.00 ft

**Serial #: 8373 Inside**  
 Press @ Run Depth: 449.56 psig @ 4653.00 ft (KB) Capacity: 8000.00 psig  
 Start Date: 2011.09.20 End Date: 2011.09.20 Last Calib.: 2011.09.20  
 Start Time: 07:22:00 End Time: 15:33:54 Time On Btm: 2011.09.20 @ 09:17:55  
 Time Off Btm: 2011.09.20 @ 13:04:39

**TEST COMMENT:** IF- BOB in 9min  
 IS- No Blow  
 FF- BOB in 18 1/2min  
 FS- No Blow



## PRESSURE SUMMARY

Time (Min.)	Pressure (psig)	Temp (deg F)	Annotation
0	2420.95	108.49	Initial Hydro-static
1	82.84	107.33	Open To Flow (1)
30	287.32	120.43	Shut-In(1)
76	1120.57	119.55	End Shut-In(1)
77	264.96	118.99	Open To Flow (2)
136	449.56	125.05	Shut-In(2)
227	1117.37	123.46	End Shut-In(2)
227	2135.17	123.73	Final Hydro-static

## Recovery

Length (ft)	Description	Volume (bbl)
372.00	MCW 35%m 65%w	3.08
244.00	MCW 15%m 85%w	3.42
191.00	WCM 20%w 80%m	2.68
120.00	MCW 5%m 95%w	1.68

\* Recovery from multiple tests

## Gas Rates

Choke (inches)	Pressure (psig)	Gas Rate (Mcf/d)



**TRILOBITE  
TESTING, INC.**

# DRILL STEM TEST REPORT

**FLUID SUMMARY**

GRAND MESA OPERATING

**DBY # 2-16**

1700 N WATERFRONT PKWY BLDG 600  
WICHITA KS 67206

**16-16S-33W SCOTT**

Job Ticket: 43892

**DST#: 11**

ATTN: John Goldsmith

Test Start: 2011.09.20 @ 07:22:00

## Mud and Cushion Information

Mud Type: Gel Chem

Cushion Type:

Oil API:

deg API

Mud Weight: 9.00 lb/gal

Cushion Length:

ft

Water Salinity:

46000 ppm

Viscosity: 68.00 sec/qt

Cushion Volume:

bbbl

Water Loss: 11.17 in<sup>3</sup>

Gas Cushion Type:

Resistivity: ohm.m

Gas Cushion Pressure:

psig

Salinity: 10200.00 ppm

Filter Cake: 2.00 inches

## Recovery Information

Recovery Table

Length ft	Description	Volume bbbl
372.00	MCW 35% <i>m</i> 65% <i>w</i>	3.077
244.00	MCW 15% <i>m</i> 85% <i>w</i>	3.423
191.00	WCM 20% <i>w</i> 80% <i>m</i>	2.679
120.00	MCW 5% <i>m</i> 95% <i>w</i>	1.683

Total Length: 927.00 ft      Total Volume: 10.862 bbl

Num Fluid Samples: 0

Num Gas Bombs: 0

Serial #:

Laboratory Name:

Laboratory Location:

Recovery Comments: RW is .137 @ 80f = 46000

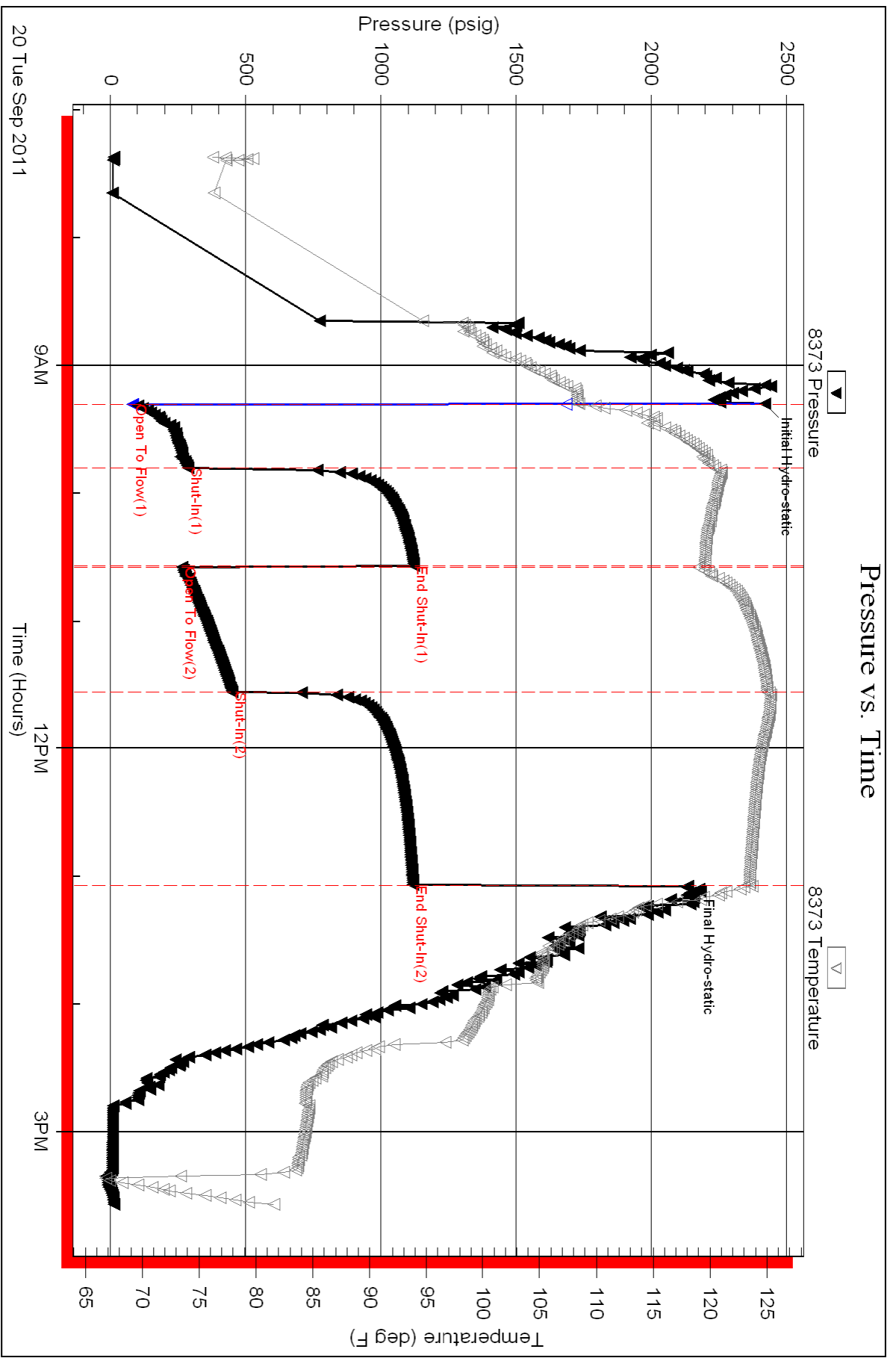
Serial #: 8373

Inside

GRAND MESA OPERATING

16-16S-33W SCOTT

DST Test Number: 11



Triobite Testing, Inc

Ref. No: 43892

Printed: 2011.09.21 @ 08:28:26