



**TRILOBITE TESTING, INC.**

# DRILL STEM TEST REPORT

Brito Oil Copmany  
 1700 N Waterfront PKWY  
 BLDG 300 Suite C  
 Wichita KS, 67206  
 ATTN: Vern Schrag

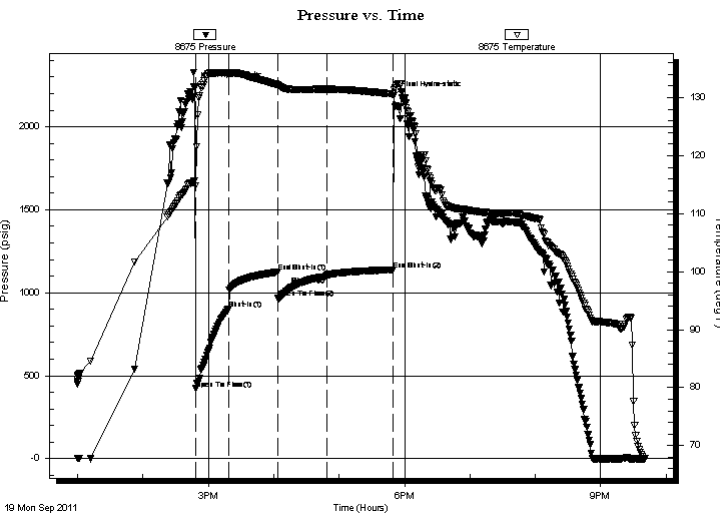
**Ostmeyer 1-11**  
**11-10s-32w**  
 Job Ticket: 042139 **DST#: 4**  
 Test Start: 2011.09.19 @ 13:00:00

## GENERAL INFORMATION:

Formation: **Pawnee**  
 Deviated: No Whipstock: ft (KB)  
 Time Tool Opened: 14:48:15  
 Time Test Ended: 21:40:45  
 Interval: **4377.00 ft (KB) To 4469.00 ft (KB) (TVD)**  
 Total Depth: 4469.00 ft (KB) (TVD)  
 Hole Diameter: 7.88 inches Hole Condition: Good  
 Test Type: Conventional Bottom Hole (Reset)  
 Tester: Jace McKinney  
 Unit No: 28  
 Reference Elevations: 3048.00 ft (KB)  
 3043.00 ft (CF)  
 KB to GR/CF: 5.00 ft

**Serial #: 8675 Inside**  
 Press @ Run Depth: 1098.35 psig @ 4378.00 ft (KB) Capacity: 8000.00 psig  
 Start Date: 2011.09.19 End Date: 2011.09.19 Last Calib.: 2011.09.19  
 Start Time: 13:00:01 End Time: 21:40:45 Time On Btm: 2011.09.19 @ 14:46:30  
 Time Off Btm: 2011.09.19 @ 17:50:15

**TEST COMMENT:** B.O.B. in 1 min.  
 Bled off for 5 min, B.O.B. in 2 min  
 B.O.B. in 2 min.  
 Bled off for 5 min. B.O.B. in 2 min



## PRESSURE SUMMARY

Time (Min.)	Pressure (psig)	Temp (deg F)	Annotation
0	2242.38	115.56	Initial Hydro-static
2	421.45	114.74	Open To Flow (1)
32	901.84	134.26	Shut-In(1)
77	1123.67	132.21	End Shut-In(1)
78	966.26	132.12	Open To Flow (2)
122	1098.35	131.46	Shut-In(2)
183	1138.97	130.61	End Shut-In(2)
184	2188.14	131.32	Final Hydro-static

## Recovery

Length (ft)	Description	Volume (bbl)
0.00	1243 Gas In Pipe	0.00
185.00	mco 10%M 90%O	1.47
2930.00	100% oil	41.10

\* Recovery from multiple tests

## Gas Rates

	Choke (inches)	Pressure (psig)	Gas Rate (Mcf/d)



**TRILOBITE  
TESTING, INC.**

# DRILL STEM TEST REPORT

**FLUID SUMMARY**

Brito Oil Copmany

**Ostmeyer 1-11**

1700 N Waterfront PKWY  
BLDG 300 Suite C  
Wichita KS, 67206  
ATTN: Vern Schrag

**11-10s-32w**

Job Ticket: 042139

**DST#: 4**

Test Start: 2011.09.19 @ 13:00:00

## Mud and Cushion Information

Mud Type: Gel Chem

Cushion Type:

Oil API:

38 deg API

Mud Weight: 9.00 lb/gal

Cushion Length:

ft

Water Salinity:

ppm

Viscosity: 59.00 sec/qt

Cushion Volume:

bbbl

Water Loss: 8.78 in<sup>3</sup>

Gas Cushion Type:

Resistivity: 0.00 ohm.m

Gas Cushion Pressure:

psig

Salinity: 1200.00 ppm

Filter Cake: 1.00 inches

## Recovery Information

Recovery Table

Length ft	Description	Volume bbl
0.00	1243 Gas In Pipe	0.000
185.00	mco 10%M90%O	1.475
2930.00	100% oil	41.100

Total Length: 3115.00 ft      Total Volume: 42.575 bbl

Num Fluid Samples: 0

Num Gas Bombs: 0

Serial #:

Laboratory Name:

Laboratory Location:

Recovery Comments: API: 41 @ 90 F = 38

