



**TRILOBITE TESTING, INC.**

# DRILL STEM TEST REPORT

Strata Exploration nc.

**32-27s-18w Kiowa Ks**

P.O.Box 401  
Fairfield Il.62837

**Todd #3-32**

Job Ticket: 44003

**DST#: 2**

ATTN: Jon Christensen

Test Start: 2011.10.05 @ 10:37:35

## GENERAL INFORMATION:

Formation: **Miss.**

Deviated: No Whipstock: ft (KB)

Time Tool Opened: 12:49:05

Time Test Ended: 18:53:05

Test Type: Conventional Bottom Hole (Reset)

Tester: Gary Pevoteaux

Unit No: 56

**Interval: 4794.00 ft (KB) To 4817.00 ft (KB) (TVD)**

Reference Elevations: 2220.00 ft (KB)

Total Depth: 4817.00 ft (KB) (TVD)

2209.00 ft (CF)

Hole Diameter: 7.88 inches Hole Condition: Fair

KB to GR/CF: 11.00 ft

**Serial #: 8167 Inside**

Press @ Run Depth: 30.51 psig @ 4795.00 ft (KB)

Capacity: 8000.00 psig

Start Date: 2011.10.05 End Date: 2011.10.05

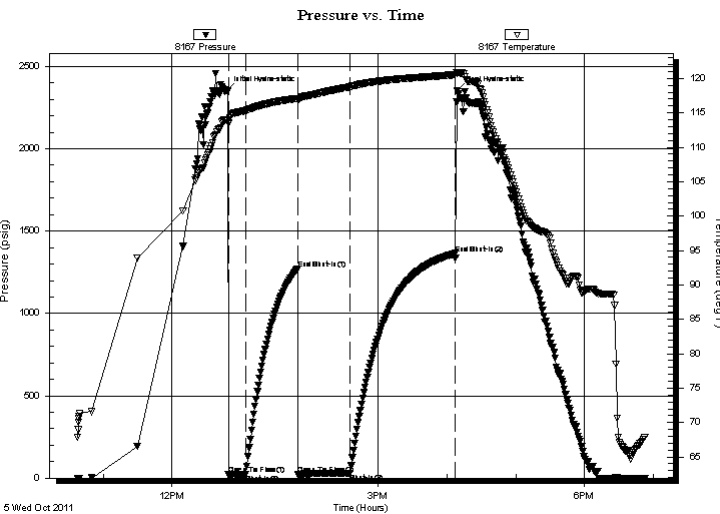
Last Calib.: 2011.10.05

Start Time: 10:37:40 End Time: 18:53:04

Time On Btm: 2011.10.05 @ 12:47:35

Time Off Btm: 2011.10.05 @ 16:08:50

**TEST COMMENT:** IF: Strong blow . B.O.B. in 90 secs.  
IS: No blow .  
FF: Strong blow . B.O.B. in 2 secs.  
FS: No blow .



## PRESSURE SUMMARY

Time (Min.)	Pressure (psig)	Temp (deg F)	Annotation
0	2351.39	113.89	Initial Hydro-static
2	20.95	113.40	Open To Flow (1)
17	24.41	115.35	Shut-In(1)
62	1270.93	117.11	End Shut-In(1)
63	20.87	116.85	Open To Flow (2)
108	30.51	118.77	Shut-In(2)
200	1364.27	120.54	End Shut-In(2)
202	2351.15	120.88	Final Hydro-static

## Recovery

Length (ft)	Description	Volume (bbl)
20.00	Drig.mud/ trace of oil	0.10
0.00	2340 ft.of GIP	0.00

\* Recovery from multiple tests

## Gas Rates

	Choke (inches)	Pressure (psig)	Gas Rate (Mcf/d)



**TRILOBITE  
TESTING, INC.**

# DRILL STEM TEST REPORT

**FLUID SUMMARY**

Strata Exploration nc.

**32-27s-18w Kiowa Ks**

P.O.Box 401  
Fairfield Il.62837

**Todd #3-32**

Job Ticket: 44003

**DST#: 2**

ATTN: Jon Christensen

Test Start: 2011.10.05 @ 10:37:35

## Mud and Cushion Information

Mud Type: Gel Chem

Cushion Type:

Oil API:

deg API

Mud Weight: 9.00 lb/gal

Cushion Length:

ft

Water Salinity:

6100 ppm

Viscosity: 53.00 sec/qt

Cushion Volume:

bbf

Water Loss: 7.98 in<sup>3</sup>

Gas Cushion Type:

Resistivity: 0.00 ohm.m

Gas Cushion Pressure:

psig

Salinity: 6100.00 ppm

Filter Cake: 0.20 inches

## Recovery Information

Recovery Table

Length ft	Description	Volume bbf
20.00	Drig.mud/ trace of oil	0.098
0.00	2340 ft.of GIP	0.000

Total Length: 20.00 ft      Total Volume: 0.098 bbf

Num Fluid Samples: 0

Num Gas Bombs: 0

Serial #: none

Laboratory Name:

Laboratory Location:

Recovery Comments:

Serial #: 8167

Inside

Strata Exploration nc.

Todd #3-32

DST Test Number: 2

