



TRILOBITE TESTING, INC.

DRILL STEM TEST REPORT

New Gulf Operating LLC

17-12-32

6310 E 102nd ST
Tulsa OK, 74137

Zerr 1

ATTN: Curtis Covey

Job Ticket: 042142

DST#: 2

Test Start: 2011.09.26 @ 00:05:00

GENERAL INFORMATION:

Formation: **Kansas City "H"**

Deviated: No Whipstock: ft (KB)

Time Tool Opened: 02:30:30

Time Test Ended: 06:52:00

Test Type: Conventional Bottom Hole (Reset)

Tester: Jace McKinney

Unit No: 28

Interval: ft (KB) To ft (KB) (TVD)

Total Depth: 4108.00 ft (KB) (TVD)

Hole Diameter: 7.88 inches Hole Condition: Poor

Reference Elevations: 3004.00 ft (KB)

2994.00 ft (CF)

KB to GR/CF: 10.00 ft

Serial #: 8675

Inside

Press @ Run Depth: 19.62 psig @ 4131.00 ft (KB)

Start Date: 2011.09.26

End Date:

2011.09.26

Start Time: 00:05:01

End Time:

06:52:00

Capacity: 8000.00 psig

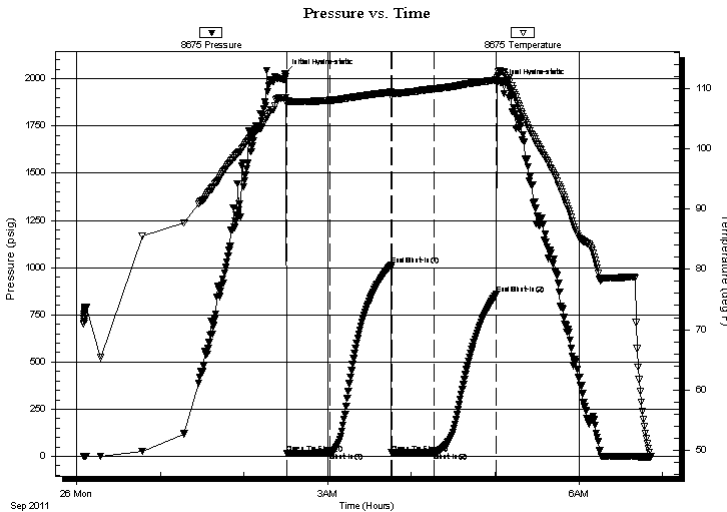
Last Calib.: 2011.09.26

Time On Btm: 2011.09.26 @ 02:29:30

Time Off Btm: 2011.09.26 @ 05:01:15

TEST COMMENT: Built to 1/4" blow
No return blow
No blow
No return blow

PRESSURE SUMMARY



Time (Min.)	Pressure (psig)	Temp (deg F)	Annotation
0	2028.58	108.42	Initial Hydro-static
1	16.29	107.43	Open To Flow (1)
32	18.86	108.00	Shut-In(1)
76	1012.44	109.36	End Shut-In(1)
77	18.59	108.72	Open To Flow (2)
107	19.62	109.91	Shut-In(2)
152	858.25	111.36	End Shut-In(2)
152	1974.78	111.78	Final Hydro-static

Recovery

Length (ft)	Description	Volume (bbl)
5.00	100%M w ith Oil scum	0.07

Gas Rates

Choke (inches)	Pressure (psig)	Gas Rate (Mcf/d)

* Recovery from multiple tests



**TRILOBITE
TESTING, INC.**

DRILL STEM TEST REPORT

FLUID SUMMARY

New Gulf Operating LLC

17-12-32

6310 E 102nd ST
Tulsa OK, 74137

Zerr 1

Job Ticket: 042142

DST#: 2

ATTN: Curtis Covey

Test Start: 2011.09.26 @ 00:05:00

Mud and Cushion Information

Mud Type: Gel Chem

Cushion Type:

Oil API:

deg API

Mud Weight: 9.00 lb/gal

Cushion Length:

ft

Water Salinity:

ppm

Viscosity: 52.00 sec/qt

Cushion Volume:

bbbl

Water Loss: 7.60 in³

Gas Cushion Type:

Resistivity: 0.00 ohm.m

Gas Cushion Pressure:

psig

Salinity: 2000.00 ppm

Filter Cake: 1.00 inches

Recovery Information

Recovery Table

Length ft	Description	Volume bbl
5.00	100%M with Oil scum	0.070

Total Length: 5.00 ft Total Volume: 0.070 bbl

Num Fluid Samples: 0

Num Gas Bombs: 0

Serial #:

Laboratory Name:

Laboratory Location:

Recovery Comments:

Pressure vs. Time

