



DRILL STEM TEST REPORT

Prepared For: **New Gulf Operating LLC**

6310 E 102nd ST
Tulsa, OK 74137

ATTN: Curtis Covey

Zerr #1

17-12-32 Logan,KS

Start Date: 2011.09.30 @ 06:09:00

End Date: 2011.09.30 @ 15:14:15

Job Ticket #: 042146 DST #: 6

Trilobite Testing, Inc
PO Box 362 Hays, KS 67601
ph: 785-625-4778 fax: 785-625-5620

Printed: 2011.10.06 @ 12:05:59

New Gulf Operating LLC
17-12-32 Logan,KS
Zerr #1
DST # 6
Johnson
2011.09.30



**TRILOBITE
TESTING, INC**

DRILL STEM TEST REPORT

New Gulf Operating LLC
6310 E 102nd ST
Tulsa, OK 74137
ATTN: Curtis Covey

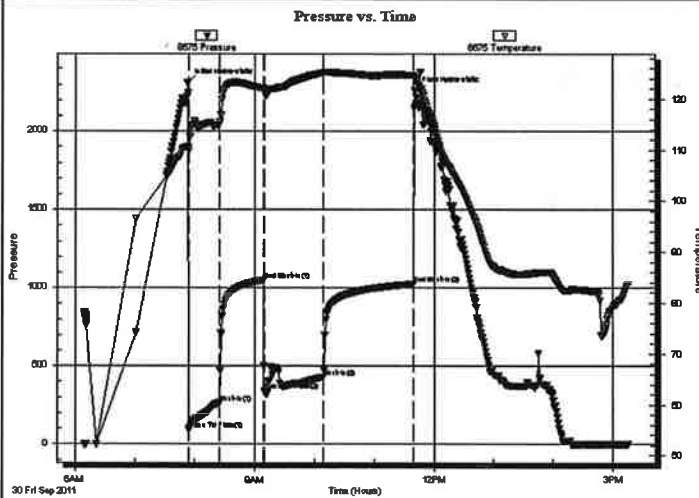
17-12-32 Logan,KS
Zerr #1
Job Ticket: 042146 **DST#: 6**
Test Start: 2011.09.30 @ 06:09:00

GENERAL INFORMATION:

Formation: **Johnson**
Deviated: No Whipstock: ft (KB)
Time Tool Opened: 07:54:00
Time Test Ended: 15:14:15
Interval: **4498.00 ft (KB) To 4580.00 ft (KB) (TVD)**
Total Depth: 4108.00 ft (KB) (TVD)
Hole Diameter: 7.88 inches Hole Condition: Poor
Test Type: Conventional Bottom Hole (Reset)
Tester: Jace McKinney
Unit No: 28
Reference Elevations: 3004.00 ft (KB)
2994.00 ft (CF)
KB to GR/CF: 10.00 ft

Serial #: 8675 **Inside**
Press@RunDepth: 426.19 psig @ 4499.00 ft (KB) Capacity: 8000.00 psig
Start Date: 2011.09.30 End Date: 2011.09.30 Last Calib.: 2011.09.30
Start Time: 06:09:01 End Time: 15:14:15 Time On Btm: 2011.09.30 @ 07:52:30
Time Off Btm: 2011.09.30 @ 11:40:45

TEST COMMENT: B.O.B. in 2 1/2 min
Bled off for 2 min. B.O.B. in 7 min.
B.O.B. in 9 min.
Bled off for 5 min. Built to 3" return blow



PRESSURE SUMMARY

Time (Min.)	Pressure (psig)	Temp (deg F)	Annotation
0	2309.61	110.71	Initial Hydro-static
2	96.12	109.83	Open To Flow (1)
32	264.32	115.01	Shut-In(1)
77	1051.07	122.17	End Shut-In(1)
78	342.12	121.45	Open To Flow (2)
137	426.19	125.10	Shut-In(2)
227	1025.26	124.67	End Shut-In(2)
229	2258.39	124.09	Final Hydro-static

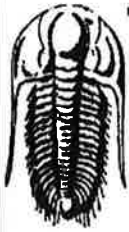
Recovery

Length (ft)	Description	Volume (bbl)
186.00	Clean Oil 20%G 80%O	2.61
372.00	mcw go 10%M 10%W 20%G 60%O	5.22
372.00	gcw mo 10%G 20%M 30%W 40%O	5.22

* Recovery from multiple tests

Gas Rates

	Choke (inches)	Pressure (psig)	Gas Rate (Mcf/d)



**TRILOBITE
TESTING, INC**

DRILL STEM TEST REPORT

TOOL DIAGRAM

New Gulf Operating LLC

17-12-32 Logan,KS

6310 E 102nd ST
Tulsa, OK 74137

Zerr #1

Job Ticket: 042146

DST#: 6

ATTN: Curtis Covey

Test Start: 2011.09.30 @ 06:09:00

Tool Information

Drill Pipe:	Length: 4476.73 ft	Diameter: 3.80 inches	Volume: 62.80 bbl	Tool Weight: 1500.00 lb
Heavy Wt. Pipe:	Length: 0.00 ft	Diameter: 0.00 inches	Volume: 0.00 bbl	Weight set on Packer: 20000.00 lb
Drill Collar:	Length: 0.00 ft	Diameter: 0.00 inches	Volume: 0.00 bbl	Weight to Pull Loose: 80000.00 lb
			<u>Total Volume: 62.80 bbl</u>	Tool Chased 0.00 ft
Drill Pipe Above KB:	6.23 ft			String Weight: Initial 64000.00 lb
Depth to Top Packer:	4498.00 ft			Final 70000.00 lb
Depth to Bottom Packer:	ft			
Interval between Packers:	82.00 ft			
Tool Length:	109.50 ft			
Number of Packers:	2	Diameter: 6.75 inches		
Tool Comments:				

Tool Description	Length (ft)	Serial No.	Position	Depth (ft)	Accum. Lengths
Change Over Sub	1.00			4471.50	
Shut In Tool	5.00			4476.50	
Hydraulic tool	5.00			4481.50	
Jars	5.00			4486.50	
Safety Joint	2.50			4489.00	
Packer	5.00			4494.00	27.50 Bottom Of Top Packer
Packer	4.00			4498.00	
Stubb	1.00			4499.00	
Recorder	0.00	8675	Inside	4499.00	
Recorder	0.00	8371	Outside	4499.00	
Perforations	13.00			4512.00	
Change Over Sub	1.00			4513.00	
Drill Pipe	63.00			4576.00	
Change Over Sub	1.00			4577.00	
Bullnose	3.00			4580.00	82.00 Bottom Packers & Anchor

Total Tool Length: 109.50

