



**TRILOBITE
TESTING, INC.**

DRILL STEM TEST REPORT

McElvain Oil & Gas Properties

1-10s-23w-Graham

1050 17TH Street
Suite 2500
Denver, CO. 80265
ATTN: Jeff Lawler

Ninemire #1-13

Job Ticket: 43499

DST#: 2

Test Start: 2011.10.15 @ 18:54:47

GENERAL INFORMATION:

Formation: **I**
 Deviated: No Whipstock: ft (CF)
 Test Type: Conventional Bottom Hole (Reset)
 Time Tool Opened: 20:56:02 Tester: Jason McLemore
 Time Test Ended: 01:02:17 Unit No: 54
 Interval: **3848.00 ft (CF) To 3870.00 ft (CF) (TVD)** Reference Elevations: 2424.00 ft (KB)
 Total Depth: 3870.00 ft (CF) (TVD) 2419.00 ft (CF)
 Hole Diameter: 7.80 inches Hole Condition: Good KB to GR/CF: 5.00 ft

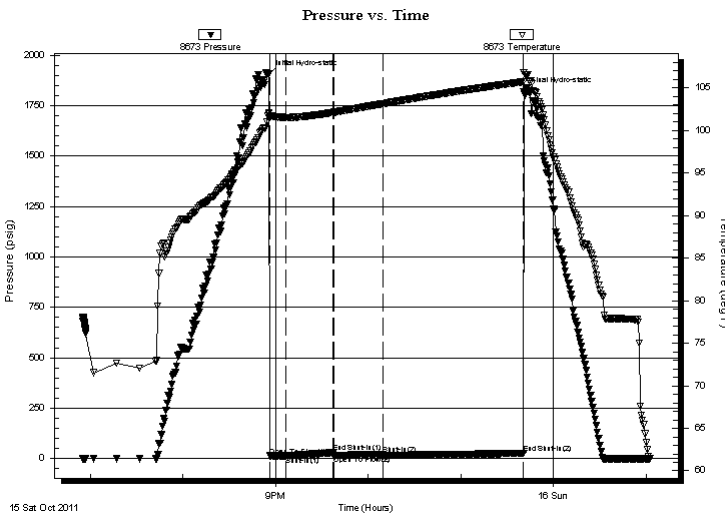
Serial #: 8673

Inside

Press @ Run Depth: 23.18 psig @ 3852.00 ft (CF) Capacity: 8000.00 psig
 Start Date: 2011.10.15 End Date: 2011.10.16 Last Calib.: 2011.10.16
 Start Time: 18:54:49 End Time: 01:02:17 Time On Btm: 2011.10.15 @ 20:55:17
 Time Off Btm: 2011.10.15 @ 23:40:47

TEST COMMENT: IFP-Weak Blow ,Built to 1/8"
 ISI-Dead
 FFP-Dead
 FSI-Dead

PRESSURE SUMMARY



| Time (Min.) | Pressure (psig) | Temp (deg F) | Annotation |
|-------------|-----------------|--------------|----------------------|
| 0 | 1906.32 | 102.00 | Initial Hydro-static |
| 1 | 13.54 | 101.52 | Open To Flow (1) |
| 12 | 14.09 | 101.53 | Shut-In(1) |
| 42 | 29.25 | 102.13 | End Shut-In(1) |
| 43 | 15.12 | 102.13 | Open To Flow (2) |
| 75 | 23.18 | 103.14 | Shut-In(2) |
| 166 | 25.94 | 105.74 | End Shut-In(2) |
| 166 | 1818.40 | 106.83 | Final Hydro-static |

Recovery

Gas Rates

| Length (ft) | Description | Volume (bbl) |
|-------------|------------------|--------------|
| 2.00 | Mud W/ Oil Spots | 0.01 |
| | | |
| | | |
| | | |
| | | |

| | Choke (inches) | Pressure (psig) | Gas Rate (Mcf/d) |
|--|----------------|-----------------|------------------|
| | | | |

* Recovery from multiple tests



TRILOBITE
TESTING, INC.

DRILL STEM TEST REPORT

FLUID SUMMARY

McElvain Oil & Gas Properties

1-10s-23w-Graham

1050 17TH Street
Suite 2500
Denver, CO. 80265
ATTN: Jeff Lawler

Ninemire #1-13

Job Ticket: 43499

DST#: 2

Test Start: 2011.10.15 @ 18:54:47

Mud and Cushion Information

Mud Type: Gel Chem

Mud Weight: 9.00 lb/gal

Viscosity: 50.00 sec/qt

Water Loss: 6.39 in³

Resistivity: ohm.m

Salinity: 3800.00 ppm

Filter Cake: inches

Cushion Type:

Cushion Length: ft

Cushion Volume: bbl

Gas Cushion Type:

Gas Cushion Pressure: psig

Oil API:

Water Salinity: deg API

ppm

Recovery Information

Recovery Table

| Length ft | Description | Volume bbl |
|--------------|------------------|---------------|
| 2.00 | Mud W/ Oil Spots | 0.010 |

Total Length: 2.00 ft Total Volume: 0.010 bbl

Num Fluid Samples: 0

Num Gas Bombs: 0

Serial #:

Laboratory Name:

Laboratory Location:

Recovery Comments:

Serial #: 8673

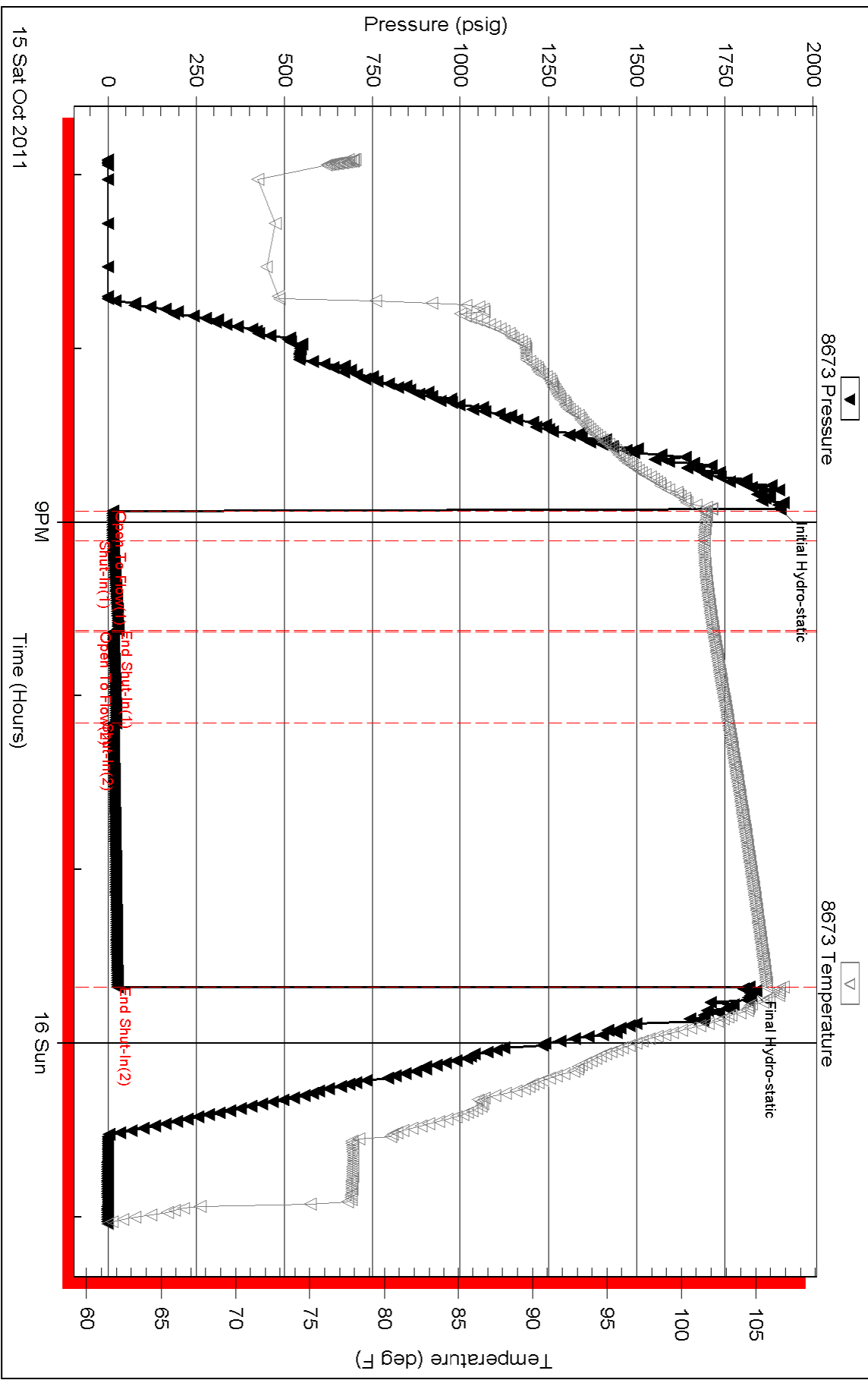
Inside

McElvain Oil & Gas Properties

Minerite #1-13

DST Test Number: 2

Pressure vs. Time



Triobite Testing, Inc

Ref. No: 43499

Printed: 2011.10.16 @ 11:25:33