



TRILOBITE TESTING, INC

DRILL STEM TEST REPORT

Shakespeare Oil

Ottley #5-15

202 W. Main
Salem, IL 62881

S15-14-32 Logan, KS

ATTN: Steve Davis

Job Ticket: 35335

DST#: 7

Test Start: 2009.10.11 @ 00:56:35

GENERAL INFORMATION:

Formation: **Morrow**

Deviated: No Whipstock: ft (KB)

Time Tool Opened: 03:14:05

Time Test Ended: 10:30:05

Test Type: Conventional Bottom Hole

Tester: Chuck Smith

Unit No: 37

Interval: 4349.00 ft (KB) To 4390.00 ft (KB) (TVD)

Reference Elevations: 2752.00 ft (KB)

Total Depth: 4390.00 ft (KB) (TVD)

2742.00 ft (CF)

Hole Diameter: 7.88 inches Hole Condition: Good

KB to GR/CF: 10.00 ft

Serial #: 8351 Inside

Press @ Run Depth: 386.20 psig @ 4353.00 ft (KB)

Capacity: 8000.00 psig

Start Date: 2009.10.11 End Date: 2009.10.11

Last Calib.: 2009.10.11

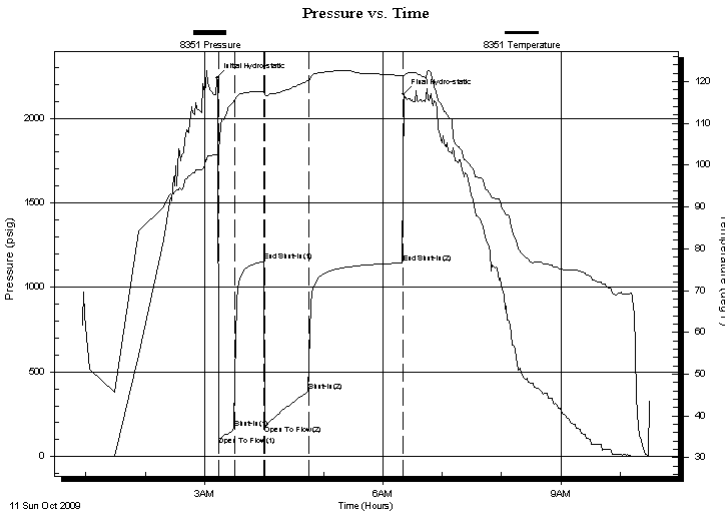
Start Time: 00:56:36 End Time: 10:30:05

Time On Btm: 2009.10.11 @ 03:12:20

Time Off Btm: 2009.10.11 @ 06:20:50

TEST COMMENT: IF: B.O.B. @ 4 min.
IS: B.O.B. @ 7 min.
FF: B.O.B. @ 3 1/2 min.
FS: B.O.B. @ 9 min.

PRESSURE SUMMARY



Time (Min.)	Pressure (psig)	Temp (deg F)	Annotation
0	2239.35	102.54	Initial Hydro-static
2	67.91	102.26	Open To Flow (1)
18	166.51	115.23	Shut-In(1)
48	1153.58	117.58	End Shut-In(1)
49	185.57	117.12	Open To Flow (2)
93	386.20	120.31	Shut-In(2)
188	1144.01	121.38	End Shut-In(2)
189	2144.90	121.55	Final Hydro-static

Recovery

Length (ft)	Description	Volume (bbl)
246.00	GWSOCM 20%G 1%W 1%O 78%M	2.32
183.00	GOCM 30%G 20%O 50%M	2.57
550.00	GO 35%G 65%O	7.72
0.00	1280 Feet GIP	0.00
0.00	Too small amount to get chlorides	0.00

Gas Rates

Choke (inches)	Pressure (psig)	Gas Rate (Mcf/d)

