



**TRILOBITE
TESTING, INC.**

DRILL STEM TEST REPORT

Grand Mesa Operating Company

30-16s-32w

1700 N Waterfront PKWY
BLDG 600 Wichita, KS 67206-5514

Wel-Zan 1-30

Job Ticket: 45437

DST#: 4

ATTN: John Goldsmith

Test Start: 2011.12.07 @ 15:55:00

GENERAL INFORMATION:

Formation: **Kansas City "K"**

Deviated: No Whipstock: ft (KB)

Time Tool Opened: 17:55:00

Time Test Ended: 22:22:15

Test Type: Conventional Bottom Hole (Reset)

Tester: Jace McKinney

Unit No: 46

Interval: 4204.00 ft (KB) To 4237.00 ft (KB) (TVD)

Reference Elevations: 2952.00 ft (KB)

Total Depth: 4237.00 ft (KB) (TVD)

2947.00 ft (CF)

Hole Diameter: 7.88 inches Hole Condition: Fair

KB to GR/CF: 5.00 ft

Serial #: 8675

Inside

Press @ Run Depth: 498.25 psig @ 4205.00 ft (KB)

Capacity: 8000.00 psig

Start Date: 2011.12.07

End Date:

2011.12.07

Last Calib.:

2011.12.07

Start Time: 15:55:01

End Time:

22:22:15

Time On Btm:

2011.12.07 @ 17:54:45

Time Off Btm:

2011.12.07 @ 19:58:15

TEST COMMENT:

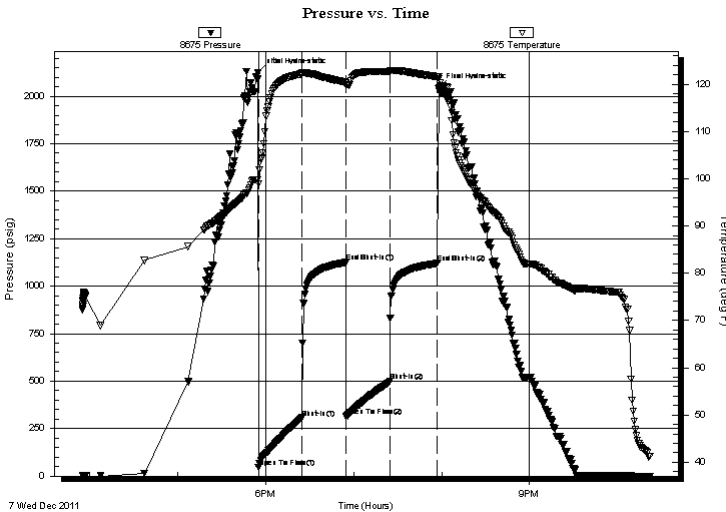
B.O.B. in 5 min.

Bled off for 5 min. No return blow

B.O.B. in 5 min.

Bled off for 5 min. No return blow

PRESSURE SUMMARY



Time (Min.)	Pressure (psig)	Temp (deg F)	Annotation
0	2122.99	99.73	Initial Hydro-static
1	44.69	98.95	Open To Flow (1)
30	307.73	122.14	Shut-In(1)
60	1125.60	120.37	End Shut-In(1)
61	315.65	119.86	Open To Flow (2)
90	498.25	122.69	Shut-In(2)
123	1120.81	121.57	End Shut-In(2)
124	2043.79	121.13	Final Hydro-static

Recovery

Length (ft)	Description	Volume (bbl)
750.00	100% Water	9.45
250.00	50%M 50%W	3.51

* Recovery from multiple tests

Gas Rates

Choke (inches)	Pressure (psig)	Gas Rate (Mcf/d)



**TRILOBITE
TESTING, INC.**

DRILL STEM TEST REPORT

FLUID SUMMARY

Grand Mesa Operating Company

30-16s-32w

1700 N Waterfront PKWY
BLDG 600 Wichita, KS 67206-5514

Wel-Zan 1-30

Job Ticket: 45437

DST#: 4

ATTN: John Goldsmith

Test Start: 2011.12.07 @ 15:55:00

Mud and Cushion Information

Mud Type: Gel Chem

Cushion Type:

Oil API:

deg API

Mud Weight: 9.00 lb/gal

Cushion Length: ft

Water Salinity: ppm

Viscosity: 56.00 sec/qt

Cushion Volume: bbl

Water Loss: 8.79 in³

Gas Cushion Type:

Resistivity: 0.00 ohm.m

Gas Cushion Pressure: psig

Salinity: 3800.00 ppm

Filter Cake: 1.00 inches

Recovery Information

Recovery Table

Length ft	Description	Volume bbl
750.00	100% Water	9.453
250.00	50%M 50%W	3.507

Total Length: 1000.00 ft Total Volume: 12.960 bbl

Num Fluid Samples: 0

Num Gas Bombs: 0

Serial #:

Laboratory Name:

Laboratory Location:

Recovery Comments:

Pressure vs. Time

