



DRILL STEM TEST REPORT

Prepared For: **F G Holl Company**

9431 East Central Suite#100
Wichita, Kansas 67206+2563

ATTN: Ryan Greenbaum

Reece " A " #1-1

1/23S/22W Hodgeman Co.

Start Date: 2011.12.17 @ 12:33:00

End Date: 2011.12.17 @ 19:48:30

Job Ticket #: 18859 DST #: 2

Superior Testers Enterprises LLC
PO Box 138 Great Bend KS 67530
1-800-792-6902

Printed: 2011.12.17 @ 06:15:19



DRILL STEM TEST REPORT

F G Holl Company
 9431 East Central Suite#100
 Wichita, Kansas 67206+2563
 ATTN: Ryan Greenbaum

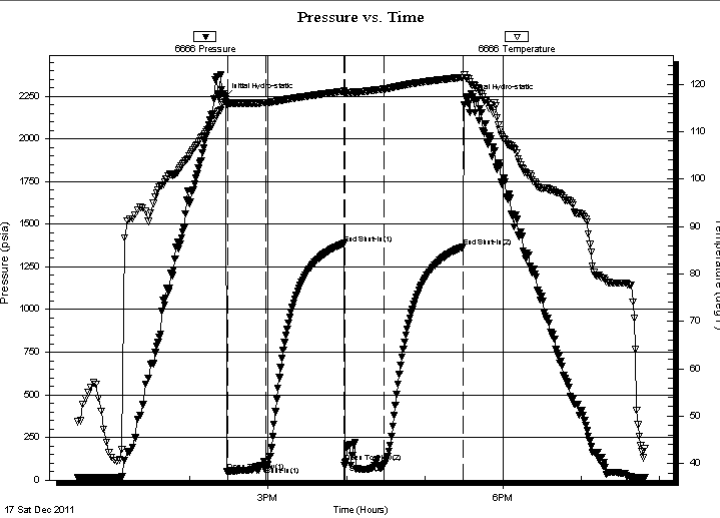
1/23S/22W Hodgeman Co.
Reece " A " #1-1
 Job Ticket: 18859 **DST#: 2**
 Test Start: 2011.12.17 @ 12:33:00

GENERAL INFORMATION:

Formation: **Mississippi**
 Deviated: No Whipstock: ft (KB)
 Test Type: Conventional Bottom Hole (Initial)
 Time Tool Opened: 14:29:00 Tester: Dylan E Ellis
 Time Test Ended: 19:48:30 Unit No: 3335/Great Bend/124
 Interval: **4515.00 ft (KB) To 4560.00 ft (KB) (TVD)** Reference Elevations: 2311.00 ft (KB)
 Total Depth: 4560.00 ft (KB) (TVD) 2300.00 ft (CF)
 Hole Diameter: 7.88 inches Hole Condition: Fair KB to GR/CF: 11.00 ft

Serial #: 6666 Outside
 Press @ Run Depth: 91.65 psia @ 4557.00 ft (KB) Capacity: 5000.00 psia
 Start Date: 2011.12.17 End Date: 2011.12.17 Last Calib.: 2011.12.17
 Start Time: 12:33:00 End Time: 19:48:30 Time On Btm: 2011.12.17 @ 14:27:00
 Time Off Btm: 2011.12.17 @ 17:32:00

TEST COMMENT: 1ST Opening 30 Minutes very weak surface blow/no change
 1ST Shut-In 60 Minutes no blow back
 2ND Opening 30 Minutes blow dead through out the opening
 2ND Shut-In 60 Minutes no blow back



PRESSURE SUMMARY			
Time (Min.)	Pressure (psia)	Temp (deg F)	Annotation
0	2243.87	116.32	Initial Hydro-static
2	53.12	115.92	Open To Flow (1)
32	79.61	116.10	Shut-In(1)
91	1386.77	118.52	End Shut-In(1)
92	106.00	118.21	Open To Flow (2)
122	91.65	118.98	Shut-In(2)
183	1366.83	121.45	End Shut-In(2)
185	2234.50	121.32	Final Hydro-static

Recovery		
Length (ft)	Description	Volume (bbl)
10.00	Very Lightly Oil spotted Mud-100%	0.05

Gas Rates			
	Choke (inches)	Pressure (psia)	Gas Rate (Mcf/d)



DRILL STEM TEST REPORT

F G Holl Company

1/23S/22W Hodgeman Co.

9431 East Central Suite#100
Wichita, Kansas 67206+2563

Reece " A " #1-1

Job Ticket: 18859

DST#: 2

ATTN: Ryan Greenbaum

Test Start: 2011.12.17 @ 12:33:00

GENERAL INFORMATION:

Formation: **Mississippi**

Deviated: No Whipstock: ft (KB)

Time Tool Opened: 14:29:00

Time Test Ended: 19:48:30

Test Type: Conventional Bottom Hole (Initial)

Tester: Dylan E Ellis

Unit No: 3335/Great Bend/124

Interval: 4515.00 ft (KB) To 4560.00 ft (KB) (TVD)

Reference Elevations: 2311.00 ft (KB)

Total Depth: 4560.00 ft (KB) (TVD)

2300.00 ft (CF)

Hole Diameter: 7.88 inches Hole Condition: Fair

KB to GR/CF: 11.00 ft

Serial #: 6731 Inside

Press @ RunDepth: 1365.14 psia @ 4556.00 ft (KB)

Capacity: 5000.00 psia

Start Date: 2011.12.17 End Date: 2011.12.17

Last Calib.: 2011.12.17

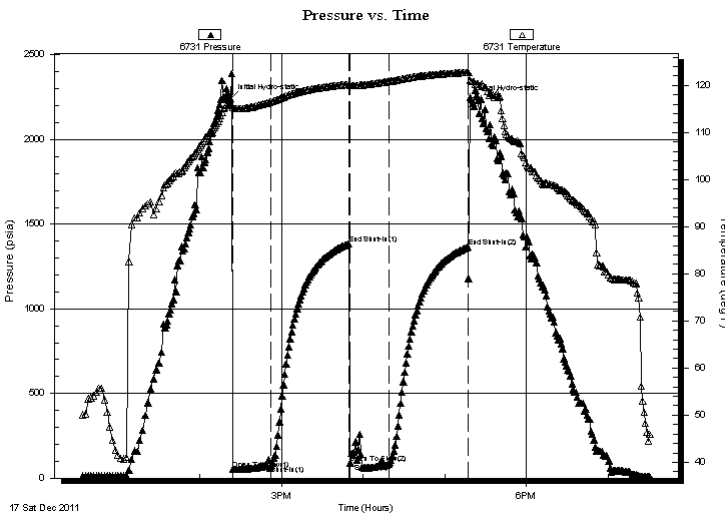
Start Time: 12:33:00 End Time: 19:30:30

Time On Btm: 2011.12.17 @ 14:22:30

Time Off Btm: 2011.12.17 @ 17:19:30

TEST COMMENT: 1ST Opening 30 Minutes very weak surface blow/no change
1ST Shut-In 60 Minutes no blow back
2ND Opening 30 Minutes blow dead through out the opening
2ND Shut-In 60 Minutes no blow back

PRESSURE SUMMARY



Time (Min.)	Pressure (psia)	Temp (deg F)	Annotation
0	2242.25	115.98	Initial Hydro-static
2	52.24	115.23	Open To Flow (1)
30	74.94	116.51	Shut-In(1)
87	1385.48	120.22	End Shut-In(1)
88	90.11	119.92	Open To Flow (2)
117	86.28	120.82	Shut-In(2)
175	1365.14	122.75	End Shut-In(2)
177	2237.47	120.83	Final Hydro-static

Recovery

Length (ft)	Description	Volume (bbl)
10.00	Very Lightly Oil spotted Mud-100%	0.05

Gas Rates

Choke (inches)	Pressure (psia)	Gas Rate (Mcf/d)



DRILL STEM TEST REPORT

TOOL DIAGRAM

F G Holl Company
 9431 East Central Suite#100
 Wichita, Kansas 67206+2563
 ATTN: Ryan Greenbaum

1/23S/22W Hodgeman Co.
Reece " A " #1-1
 Job Ticket: 18859 **DST#: 2**
 Test Start: 2011.12.17 @ 12:33:00

Tool Information

Drill Pipe:	Length: 4198.00 ft	Diameter: 3.80 inches	Volume: 58.89 bbl	Tool Weight:	2000.00 lb
Heavy Wt. Pipe:	Length: 0.00 ft	Diameter: 0.00 inches	Volume: 0.00 bbl	Weight set on Packer:	20000.00 lb
Drill Collar:	Length: 314.42 ft	Diameter: 2.25 inches	Volume: 1.55 bbl	Weight to Pull Loose:	23000.00 lb
			<u>Total Volume: 60.44 bbl</u>	Tool Chased	0.00 ft
Drill Pipe Above KB:	17.42 ft			String Weight: Initial	80000.00 lb
Depth to Top Packer:	4515.00 ft			Final	80000.00 lb
Depth to Bottom Packer:	ft				
Interval between Packers:	45.00 ft				
Tool Length:	65.00 ft				
Number of Packers:	2	Diameter: 6.75 inches			

Tool Comments:

Tool Description	Length (ft)	Serial No.	Position	Depth (ft)	Accum. Lengths
Shut-In Tool	5.00			4500.00	
Hydraulic Tool	5.00			4505.00	
Top Packer	5.00			4510.00	
Packer	5.00			4515.00	20.00 Bottom Of Top Packer
Anchor	40.00			4555.00	
Recorder	1.00	6731	Inside	4556.00	
Recorder	1.00	6666	Outside	4557.00	
Bull Plug	3.00			4560.00	45.00 Anchor Tool

Total Tool Length: 65.00



DRILL STEM TEST REPORT

FLUID SUMMARY

F G Holl Company

1/23S/22W Hodgeman Co.

9431 East Central Suite#100
Wichita, Kansas 67206+2563

Reece " A " #1-1

Job Ticket: 18859

DST#: 2

ATTN: Ryan Greenbaum

Test Start: 2011.12.17 @ 12:33:00

Mud and Cushion Information

Mud Type: Gel Chem

Cushion Type:

Oil API:

deg API

Mud Weight: 9.00 lb/gal

Cushion Length:

ft

Water Salinity:

ppm

Viscosity: 50.00 sec/qt

Cushion Volume:

bbbl

Water Loss: 7.20 in³

Gas Cushion Type:

Resistivity: ohm.m

Gas Cushion Pressure:

psia

Salinity: 5700.00 ppm

Filter Cake: 1.00 inches

Recovery Information

Recovery Table

Length ft	Description	Volume bbl
10.00	Very Lightly Oil spotted Mud-100%	0.049

Total Length: 10.00 ft Total Volume: 0.049 bbl

Num Fluid Samples: 0

Num Gas Bombs: 0

Serial #:

Laboratory Name:

Laboratory Location:

Recovery Comments:

