



DRILL STEM TEST REPORT

Prepared For: **F G Holl Company**

9431 East Central Suite#100
Wichita, Kansas 67206+2563

ATTN: Ryan Greenbaum

Reece " A " #1-1

1/23S/22W Hodgeman Co.

Start Date: 2011.12.17 @ 05:50:00

End Date: 2011.12.18 @ 13:59:00

Job Ticket #: 18860 DST #: 3

Superior Testers Enterprises LLC
PO Box 138 Great Bend KS 67530
1-800-792-6902

Printed: 2011.12.18 @ 00:22:30



DRILL STEM TEST REPORT

F G Holl Company
 9431 East Central Suite#100
 Wichita, Kansas 67206+2563
 ATTN: Ryan Greenbaum

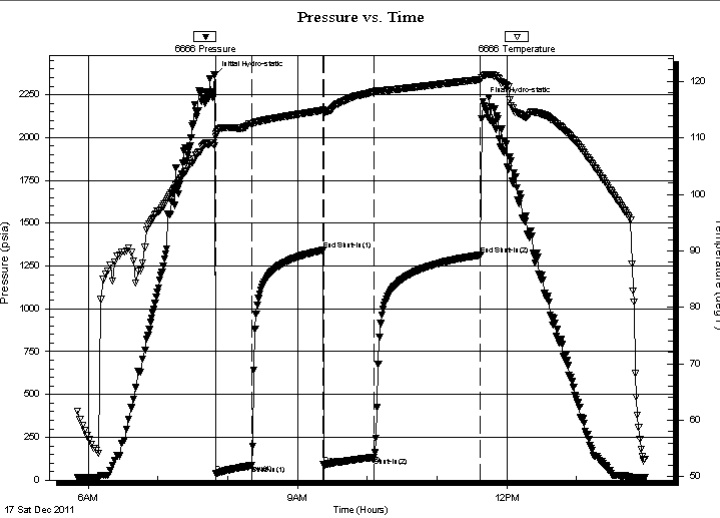
1/23S/22W Hodgeman Co.
Reece " A " #1-1
 Job Ticket: 18860 **DST#: 3**
 Test Start: 2011.12.17 @ 05:50:00

GENERAL INFORMATION:

Formation: **Mississippi**
 Deviated: No Whipstock: ft (KB)
 Test Type: Conventional Bottom Hole (Initial)
 Time Tool Opened: 07:50:00 Tester: Dylan E Ellis
 Time Test Ended: 13:59:00 Unit No: 3335/Great Bend/124
 Interval: **4559.00 ft (KB) To 4570.00 ft (KB) (TVD)** Reference Elevations: 2311.00 ft (KB)
 Total Depth: 4570.00 ft (KB) (TVD) 2300.00 ft (CF)
 Hole Diameter: 7.88 inches Hole Condition: Fair KB to GR/CF: 11.00 ft

Serial #: 6666 Outside
 Press @ Run Depth: 133.65 psia @ 4567.00 ft (KB) Capacity: 5000.00 psia
 Start Date: 2011.12.17 End Date: 2011.12.18 Last Calib.: 2011.12.18
 Start Time: 05:50:00 End Time: 13:59:00 Time On Btm: 2011.12.17 @ 07:48:30
 Time Off Btm: 2011.12.17 @ 11:39:30

TEST COMMENT: 1ST Opening 30 Minutes weak building blow /blow blew 6 inches into bucket
 1ST Shut-In 60 Minutes yes/ slight
 2ND Opening 45 Minutes very weak blow /blow blew 2 inches into the bucket
 2ND Shut-In 90 Minutes yes/died out



PRESSURE SUMMARY

Time (Min.)	Pressure (psia)	Temp (deg F)	Annotation
0	2363.48	108.64	Initial Hydro-static
2	37.32	110.77	Open To Flow (1)
32	86.44	112.50	Shut-In(1)
94	1341.71	114.89	End Shut-In(1)
95	89.56	114.57	Open To Flow (2)
138	133.65	118.19	Shut-In(2)
229	1313.65	120.31	End Shut-In(2)
231	2209.10	120.96	Final Hydro-static

Recovery

Length (ft)	Description	Volume (bbl)
60.00	Clean free Oil 100%	0.30
180.00	Salt Water 100% /Slightly spotted Oil	0.89
0.00	Gravity of Oil corrected w as 36	0.00
0.00	Chlorides were 19,000	0.00
0.00	Resistivity was .19 @ 86 degrees	0.00

Gas Rates

Choke (inches)	Pressure (psia)	Gas Rate (Mcf/d)



DRILL STEM TEST REPORT

F G Holl Company
 9431 East Central Suite#100
 Wichita, Kansas 67206+2563
 ATTN: Ryan Greenbaum

1/23S/22W Hodgeman Co.
Reece " A " #1-1
 Job Ticket: 18860 **DST#: 3**
 Test Start: 2011.12.17 @ 05:50:00

GENERAL INFORMATION:

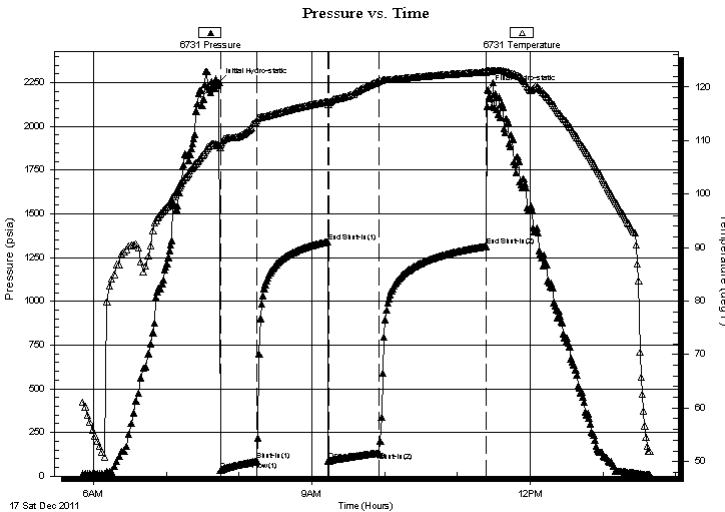
Formation: **Mississippi**
 Deviated: No Whipstock: ft (KB)
 Test Type: Conventional Bottom Hole (Initial)
 Time Tool Opened: 07:50:00 Tester: Dylan E Ellis
 Time Test Ended: 13:59:00 Unit No: 3335/Great Bend/124
 Interval: **4559.00 ft (KB) To 4570.00 ft (KB) (TVD)** Reference Elevations: 2311.00 ft (KB)
 Total Depth: 4570.00 ft (KB) (TVD) 2300.00 ft (CF)
 Hole Diameter: 7.88 inches Hole Condition: Fair KB to GR/CF: 11.00 ft

Serial #: 6731 Inside

Press @ RunDepth: 1313.99 psia @ 4566.00 ft (KB) Capacity: psia
 Start Date: 2011.12.17 End Date: 2011.12.17 Last Calib.: 1899.12.30
 Start Time: 05:50:00 End Time: 13:38:30 Time On Btm: 2011.12.17 @ 07:43:30
 Time Off Btm: 2011.12.17 @ 11:25:00

TEST COMMENT: 1ST Opening 30 Minutes weak building blow /blow blew 6 inches into bucket
 1ST Shut-In 60 Minutes yes/ slight
 2ND Opening 45 Minutes very weak blow /blow blew 2 inches into the bucket
 2ND Shut-In 90 Minutes yes/died out

PRESSURE SUMMARY



Time (Min.)	Pressure (psia)	Temp (deg F)	Annotation
0	2251.71	109.09	Initial Hydro-static
2	36.23	109.30	Open To Flow (1)
31	88.61	113.72	Shut-In(1)
90	1340.51	117.27	End Shut-In(1)
91	88.12	117.14	Open To Flow (2)
132	133.26	121.09	Shut-In(2)
220	1313.99	122.83	End Shut-In(2)
222	2210.68	123.02	Final Hydro-static

Recovery

Gas Rates

Length (ft)	Description	Volume (bbl)
60.00	Clean free Oil 100%	0.30
180.00	Salt Water 100% /Slightly spotted Oil	0.89
0.00	Gravity of Oil corrected w as 36	0.00
0.00	Chlorides were 19,000	0.00
0.00	Resistivity was .19 @ 86 degrees	0.00

Choke (inches)	Pressure (psia)	Gas Rate (Mcf/d)



DRILL STEM TEST REPORT

TOOL DIAGRAM

F G Holl Company

1/23S/22W Hodgeman Co.

9431 East Central Suite#100
Wichita, Kansas 67206+2563

Reece " A " #1-1

Job Ticket: 18860

DST#: 3

ATTN: Ryan Greenbaum

Test Start: 2011.12.17 @ 05:50:00

Tool Information

Drill Pipe:	Length: 4226.00 ft	Diameter: 3.80 inches	Volume: 59.28 bbl	Tool Weight: 2000.00 lb
Heavy Wt. Pipe:	Length: 0.00 ft	Diameter: 0.00 inches	Volume: 0.00 bbl	Weight set on Packer: 20000.00 lb
Drill Collar:	Length: 314.42 ft	Diameter: 2.25 inches	Volume: 1.55 bbl	Weight to Pull Loose: 20000.00 lb
			<u>Total Volume: 60.83 bbl</u>	Tool Chased 0.00 ft
Drill Pipe Above KB:	9.42 ft			String Weight: Initial 78000.00 lb
Depth to Top Packer:	4559.00 ft			Final 80000.00 lb
Depth to Bottom Packer:	ft			
Interval between Packers:	11.00 ft			
Tool Length:	39.00 ft			
Number of Packers:	2	Diameter: 6.75 inches		

Tool Comments:

Tool Description	Length (ft)	Serial No.	Position	Depth (ft)	Accum. Lengths
------------------	-------------	------------	----------	------------	----------------

Shut-In Tool	5.00			4536.00	
HYD S.I. Tool	5.00			4541.00	
Jars	6.00			4547.00	
Safety Joint	2.00			4549.00	
Top Packer	5.00			4554.00	
Packer	5.00			4559.00	28.00 Bottom Of Top Packer
Anchor	6.00			4565.00	
Recorder	1.00	6731	Inside	4566.00	
Recorder	1.00	6666	Outside	4567.00	
Bull Plug	3.00			4570.00	11.00 Anchor Tool
Total Tool Length:	39.00				



DRILL STEM TEST REPORT

FLUID SUMMARY

F G Holl Company

1/23S/22W Hodgeman Co.

9431 East Central Suite#100
Wichita, Kansas 67206+2563

Reece " A " #1-1

Job Ticket: 18860

DST#: 3

ATTN: Ryan Greenbaum

Test Start: 2011.12.17 @ 05:50:00

Mud and Cushion Information

Mud Type: Gel Chem

Cushion Type:

Oil API:

deg API

Mud Weight: 10.00 lb/gal

Cushion Length:

ft

Water Salinity:

ppm

Viscosity: 74.00 sec/qt

Cushion Volume:

bbbl

Water Loss: 7.60 in³

Gas Cushion Type:

Resistivity: ohm.m

Gas Cushion Pressure:

psia

Salinity: 7500.00 ppm

Filter Cake: 1.00 inches

Recovery Information

Recovery Table

Length ft	Description	Volume bbbl
60.00	Clean free Oil 100%	0.295
180.00	Salt Water 100% /Slightly spotted Oil	0.885
0.00	Gravity of Oil corrected w as 36	0.000
0.00	Chlorides were 19,000	0.000
0.00	Resistivity w as .19 @ 86 degrees	0.000

Total Length: 240.00 ft

Total Volume: 1.180 bbl

Num Fluid Samples: 0

Num Gas Bombs: 0

Serial #:

Laboratory Name:

Laboratory Location:

Recovery Comments:

