



## DRILL STEM TEST REPORT

Prepared For: **TDI Inc**

1310 Bison Rd  
Hays, KS 67601+9696

ATTN: Herb Deines

**Wolf #1**

**13-15s-19w Ellis,KS**

Start Date: 2011.12.02 @ 04:25:05

End Date: 2011.12.02 @ 11:13:09

Job Ticket #: 44580                      DST #: 1

Trilobite Testing, Inc  
PO Box 362 Hays, KS 67601  
ph: 785-625-4778 fax: 785-625-5620

Printed: 2011.12.05 @ 16:47:39

TDI Inc  
13-15s-19w Ellis,KS  
Wolf #1  
DST # 1  
LKC-A-D  
2011.12.02



**TRILOBITE  
TESTING, INC.**

# DRILL STEM TEST REPORT

TDI Inc  
1310 Bison Rd  
Hays, KS 67601+9696  
ATTN: Herb Deines

**13-15s-19w Ellis,KS**  
**Wolf #1**  
Job Ticket: 44580      **DST#: 1**  
Test Start: 2011.12.02 @ 04:25:05

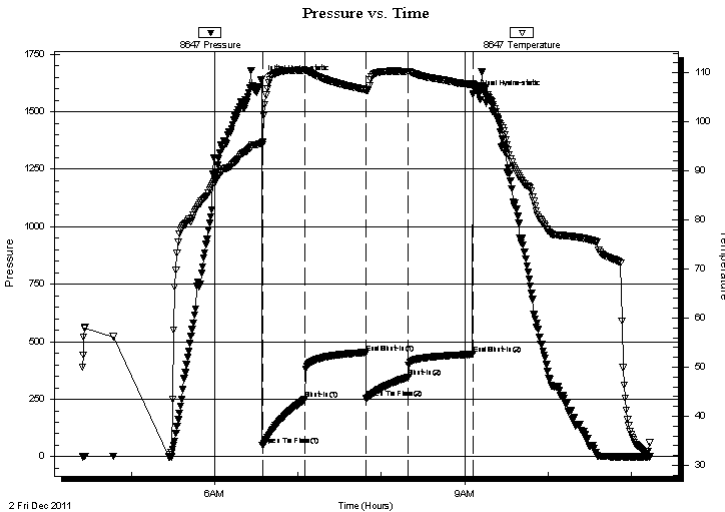
## GENERAL INFORMATION:

Formation: **LKC"A-D"**  
Deviated: No Whipstock: ft (KB)  
Time Tool Opened: 06:34:20  
Time Test Ended: 11:13:09  
Interval: **3336.00 ft (KB) To 3389.00 ft (KB) (TVD)**  
Total Depth: 3389.00 ft (KB) (TVD)  
Hole Diameter: 7.88 inches Hole Condition: Fair  
Test Type: Conventional Bottom Hole (Initial)  
Tester: Andy Carreira  
Unit No: 39  
Reference Elevations: 2038.00 ft (KB)  
2029.00 ft (CF)  
KB to GR/CF: 9.00 ft

**Serial #: 8647      Outside**  
Press @ Run Depth: 345.37 psig @ 3339.00 ft (KB)      Capacity: 8000.00 psig  
Start Date: 2011.12.02      End Date: 2011.12.02      Last Calib.: 2011.12.02  
Start Time: 04:25:05      End Time: 11:13:10      Time On Btm: 2011.12.02 @ 06:33:00  
Time Off Btm: 2011.12.02 @ 09:05:59

**TEST COMMENT:** IF:(30min) BOB, 3 min.  
IS:(45min) Return Surface blow died in 15 min  
FF:(30min) BOB, 7 min.  
FS:(45min) No Return

## PRESSURE SUMMARY



Time (Min.)	Pressure (psig)	Temp (deg F)	Annotation
0	1638.55	95.58	Initial Hydro-static
2	50.31	95.28	Open To Flow (1)
32	250.31	110.45	Shut-In(1)
76	451.89	106.58	End Shut-In(1)
76	254.55	106.48	Open To Flow (2)
107	345.37	110.26	Shut-In(2)
153	445.32	107.51	End Shut-In(2)
153	1575.32	107.85	Final Hydro-static

## Recovery

Length (ft)	Description	Volume (bbl)
570.00	Slightly Gassy Water	7.58

## Gas Rates

Choke (inches)	Pressure (psig)	Gas Rate (Mcf/d)





**TRILOBITE  
TESTING, INC.**

# DRILL STEM TEST REPORT

**TOOL DIAGRAM**

TDI Inc  
1310 Bison Rd  
Hays, KS 67601+9696  
ATTN: Herb Deines

**13-15s-19w Ellis,KS**  
**Wolf #1**  
Job Ticket: 44580      **DST#: 1**  
Test Start: 2011.12.02 @ 04:25:05

**Tool Information**

Drill Pipe:	Length: 3329.00 ft	Diameter: 3.70 inches	Volume: 44.27 bbl	Tool Weight:	2500.00 lb
Heavy Wt. Pipe:	Length: 0.00 ft	Diameter: 2.70 inches	Volume: 0.00 bbl	Weight set on Packer:	24000.00 lb
Drill Collar:	Length: 0.00 ft	Diameter: 2.25 inches	Volume: 0.00 bbl	Weight to Pull Loose:	44000.00 lb
			<u>Total Volume: 44.27 bbl</u>	Tool Chased	0.00 ft
Drill Pipe Above KB:	13.00 ft			String Weight: Initial	36000.00 lb
Depth to Top Packer:	3336.00 ft			Final	40000.00 lb
Depth to Bottom Packer:	ft				
Interval between Packers:	53.00 ft				
Tool Length:	73.00 ft				
Number of Packers:	2	Diameter: 6.75 inches			

Tool Comments:

**Tool Description**

**Length (ft) Serial No. Position Depth (ft) Accum. Lengths**

Change Over Sub	1.00			3317.00	
Shut In Tool	5.00			3322.00	
Hydraulic tool	5.00			3327.00	
Packer	5.00			3332.00	20.00 Bottom Of Top Packer
Packer	4.00			3336.00	
Stubb	1.00			3337.00	
Perforations	1.00			3338.00	
Change Over Sub	1.00			3339.00	
Recorder	0.00	8017	Inside	3339.00	
Recorder	0.00	8647	Outside	3339.00	
Drill Pipe	31.00			3370.00	
Change Over Sub	1.00			3371.00	
Perforations	15.00			3386.00	
Bullnose	3.00			3389.00	53.00 Bottom Packers & Anchor

**Total Tool Length: 73.00**



**TRILOBITE  
TESTING, INC.**

# DRILL STEM TEST REPORT

**FLUID SUMMARY**

TDI Inc	<b>13-15s-19w Ellis,KS</b>
1310 Bison Rd Hays, KS 67601+9696	<b>Wolf #1</b>
ATTN: Herb Deines	Job Ticket: 44580 <b>DST#: 1</b>
	Test Start: 2011.12.02 @ 04:25:05

## Mud and Cushion Information

Mud Type: Gel Chem	Cushion Type:	Oil API:	deg API
Mud Weight: 9.00 lb/gal	Cushion Length: ft	Water Salinity:	42000 ppm
Viscosity: 53.00 sec/qt	Cushion Volume: bbl		
Water Loss: 6.38 in <sup>3</sup>	Gas Cushion Type:		
Resistivity: ohm.m	Gas Cushion Pressure: psig		
Salinity: 2500.00 ppm			
Filter Cake: inches			

## Recovery Information

Recovery Table

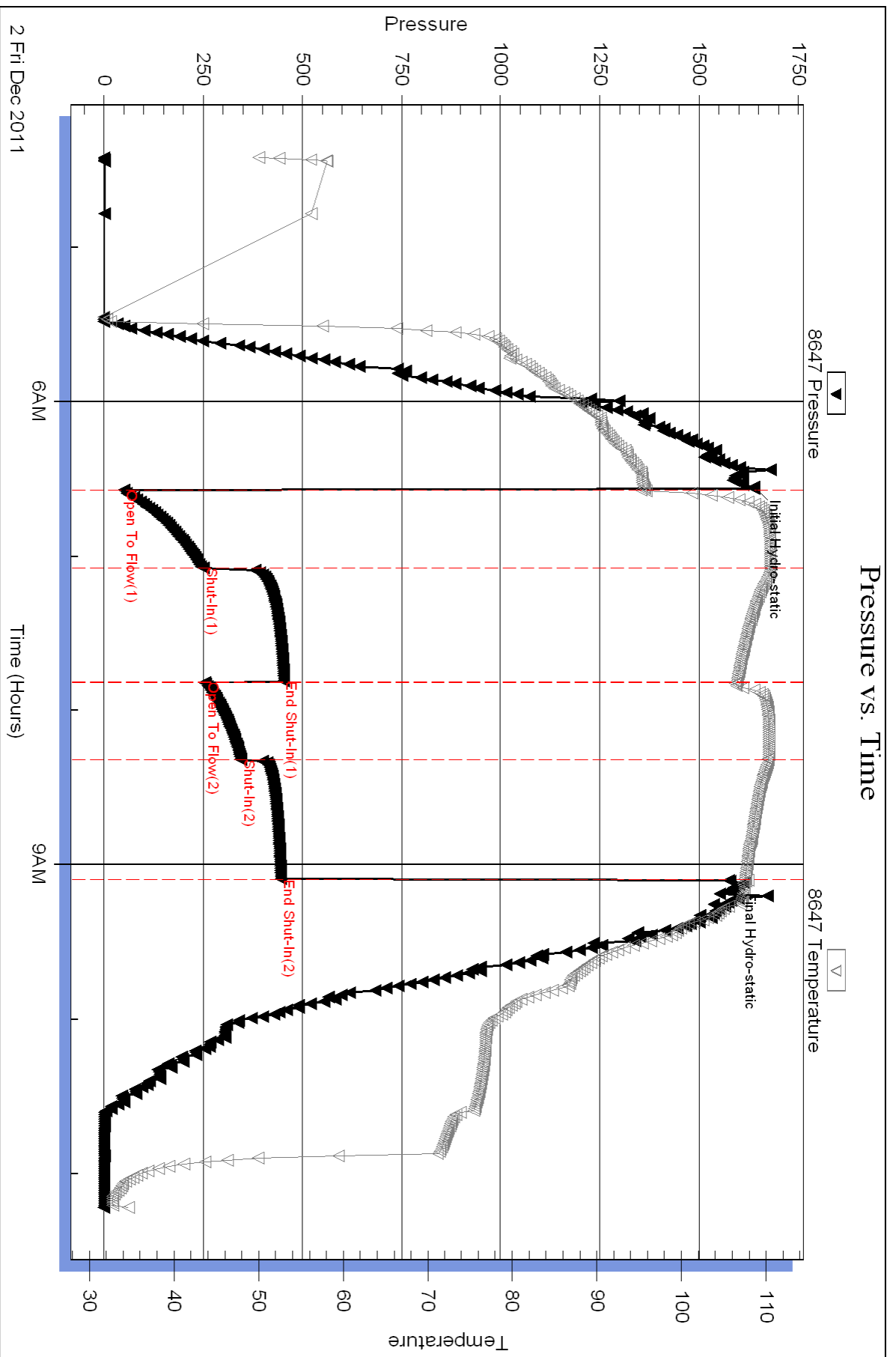
Length ft	Description	Volume bbl
570.00	Slightly Gassy Water	7.580

Total Length: 570.00 ft      Total Volume: 7.580 bbl

Num Fluid Samples: 0      Num Gas Bombs: 0      Serial #:

Laboratory Name:      Laboratory Location:

Recovery Comments: Resistivity- .37 @ 29 deg = 42000



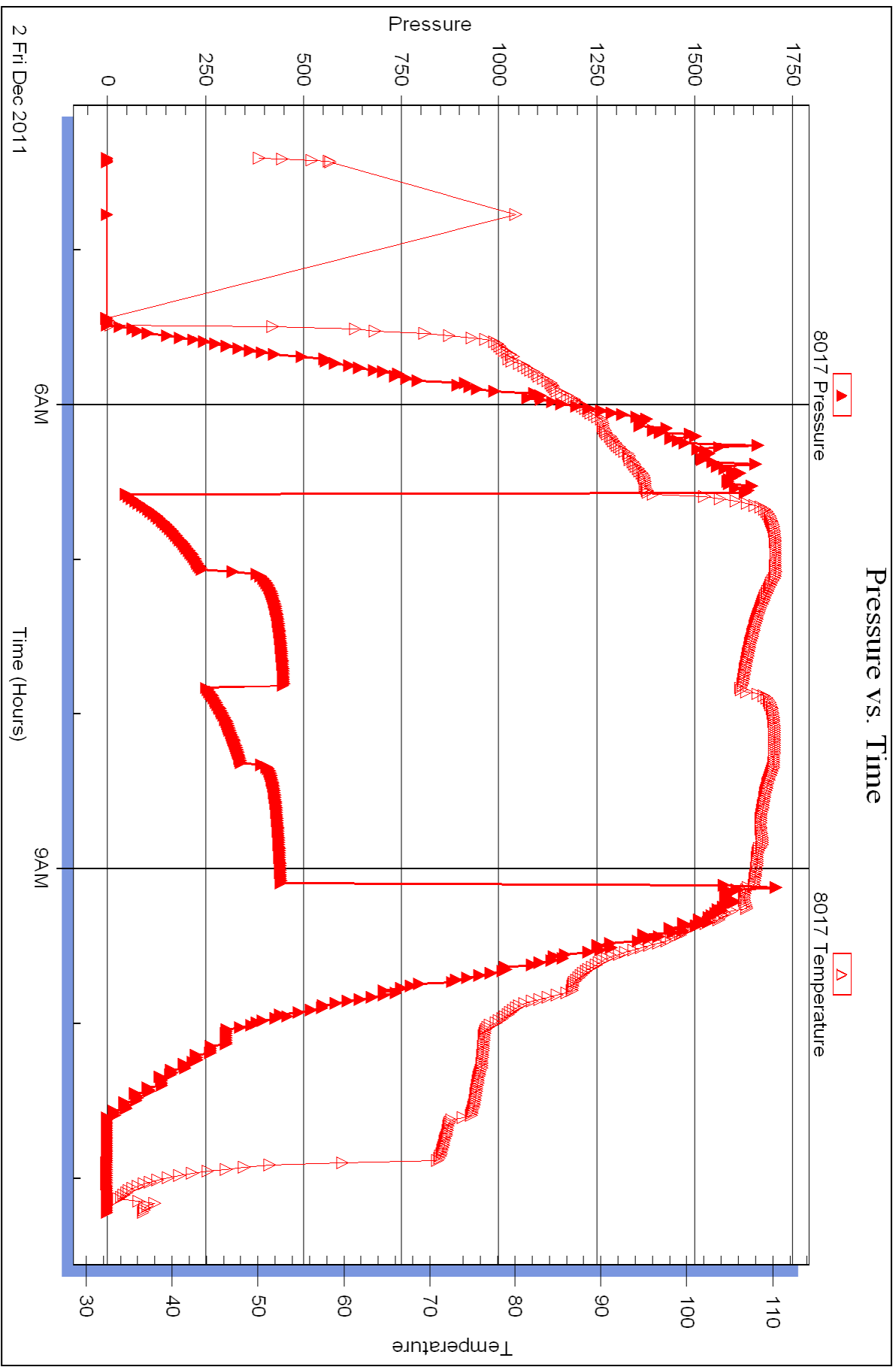
Serial #: 8017

Inside

TDI Inc

Wolf #1

DST Test Number: 1





## DRILL STEM TEST REPORT

Prepared For: **TDI Inc**

1310 Bison Rd  
Hays, KS 67601+9696

ATTN: Herb Deines

**Wolf #1**

**13-15s-19w Ellis,KS**

Start Date: 2011.12.03 @ 04:55:05

End Date: 2011.12.03 @ 10:44:20

Job Ticket #: 44581                      DST #: 2

Trilobite Testing, Inc  
PO Box 362 Hays, KS 67601  
ph: 785-625-4778 fax: 785-625-5620

Printed: 2011.12.05 @ 16:47:03

TDI Inc  
13-15s-19w Ellis,KS  
Wolf #1  
DST # 2  
LKC-"L"  
2011.12.03





**TRILOBITE TESTING, INC.**

# DRILL STEM TEST REPORT

TDI Inc  
 1310 Bison Rd  
 Hays, KS 67601+9696  
 ATTN: Herb Deines

**13-15s-19w Ellis, KS**  
**Wolf #1**  
 Job Ticket: 44581 **DST#: 2**  
 Test Start: 2011.12.03 @ 04:55:05

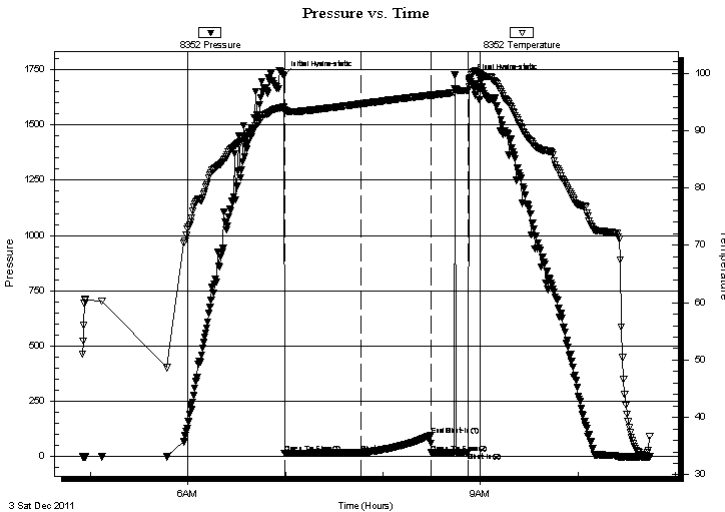
## GENERAL INFORMATION:

Formation: **LKC "I-L"**  
 Deviated: No Whipstock: ft (KB)  
 Test Type: Conventional Bottom Hole (Reset)  
 Time Tool Opened: 06:59:20 Tester: Andy Carreira  
 Time Test Ended: 10:44:20 Unit No: 39  
 Interval: **3475.00 ft (KB) To 3575.00 ft (KB) (TVD)** Reference Elevations: 2038.00 ft (KB)  
 Total Depth: 3575.00 ft (KB) (TVD) 2029.00 ft (CF)  
 Hole Diameter: 7.88 inches Hole Condition: Fair KB to GR/CF: 9.00 ft

**Serial #: 8352 Outside**  
 Press @ Run Depth: 16.23 psig @ 3478.00 ft (KB) Capacity: 8000.00 psig  
 Start Date: 2011.12.03 End Date: 2011.12.03 Last Calib.: 2011.12.03  
 Start Time: 04:55:05 End Time: 10:44:20 Time On Btm: 2011.12.03 @ 06:58:40  
 Time Off Btm: 2011.12.03 @ 08:53:20

**TEST COMMENT:** IF:(45min) Weak Blow, Died in 40 min.  
 IS:(45min) No Return  
 FF:(20min) No Blow, Flushed, Surge, No Blow  
 FS: Pulled Tool

## PRESSURE SUMMARY



Time (Min.)	Pressure (psig)	Temp (deg F)	Annotation
0	1724.14	94.08	Initial Hydro-static
1	15.29	93.41	Open To Flow (1)
48	16.23	94.66	Shut-In(1)
91	95.42	96.19	End Shut-In(1)
92	16.11	96.16	Open To Flow (2)
114	17.39	96.98	Shut-In(2)
115	1711.05	98.92	Final Hydro-static

## Recovery

Length (ft)	Description	Volume (bbl)
10.00	Mud w/ slight oil spks in tool	0.13

\* Recovery from multiple tests

## Gas Rates

Choke (inches)	Pressure (psig)	Gas Rate (Mcf/d)





**TRILOBITE  
TESTING, INC.**

# DRILL STEM TEST REPORT

**TOOL DIAGRAM**

TDI Inc  
1310 Bison Rd  
Hays, KS 67601+9696  
ATTN: Herb Deines

**13-15s-19w Ellis, KS**  
**Wolf #1**  
Job Ticket: 44581      **DST#: 2**  
Test Start: 2011.12.03 @ 04:55:05

**Tool Information**

Drill Pipe:	Length: 3485.00 ft	Diameter: 3.70 inches	Volume: 46.35 bbl	Tool Weight:	2500.00 lb
Heavy Wt. Pipe:	Length: 0.00 ft	Diameter: 2.70 inches	Volume: 0.00 bbl	Weight set on Packer:	24000.00 lb
Drill Collar:	Length: 0.00 ft	Diameter: 2.25 inches	Volume: 0.00 bbl	Weight to Pull Loose:	46000.00 lb
			<u>Total Volume: 46.35 bbl</u>	Tool Chased	0.00 ft
Drill Pipe Above KB:	30.00 ft			String Weight: Initial	39000.00 lb
Depth to Top Packer:	3475.00 ft			Final	39000.00 lb
Depth to Bottom Packer:	ft				
Interval between Packers:	100.00 ft				
Tool Length:	120.00 ft				
Number of Packers:	2	Diameter: 6.75 inches			

Tool Comments:

**Tool Description**

**Length (ft)    Serial No.    Position    Depth (ft)    Accum. Lengths**

Change Over Sub	1.00			3456.00	
Shut In Tool	5.00			3461.00	
Hydraulic tool	5.00			3466.00	
Packer	5.00			3471.00	20.00      Bottom Of Top Packer
Packer	4.00			3475.00	
Stubb	1.00			3476.00	
Perforations	1.00			3477.00	
Change Over Sub	1.00			3478.00	
Recorder	0.00	8017	Inside	3478.00	
Recorder	0.00	8352	Outside	3478.00	
Drill Pipe	63.00			3541.00	
Change Over Sub	1.00			3542.00	
Perforations	30.00			3572.00	
Bullnose	3.00			3575.00	100.00      Bottom Packers & Anchor

**Total Tool Length: 120.00**



**TRILOBITE  
TESTING, INC.**

# DRILL STEM TEST REPORT

**FLUID SUMMARY**

TDI Inc  
1310 Bison Rd  
Hays, KS 67601+9696  
ATTN: Herb Deines

**13-15s-19w Ellis,KS**  
**Wolf #1**  
Job Ticket: 44581      **DST#: 2**  
Test Start: 2011.12.03 @ 04:55:05

## Mud and Cushion Information

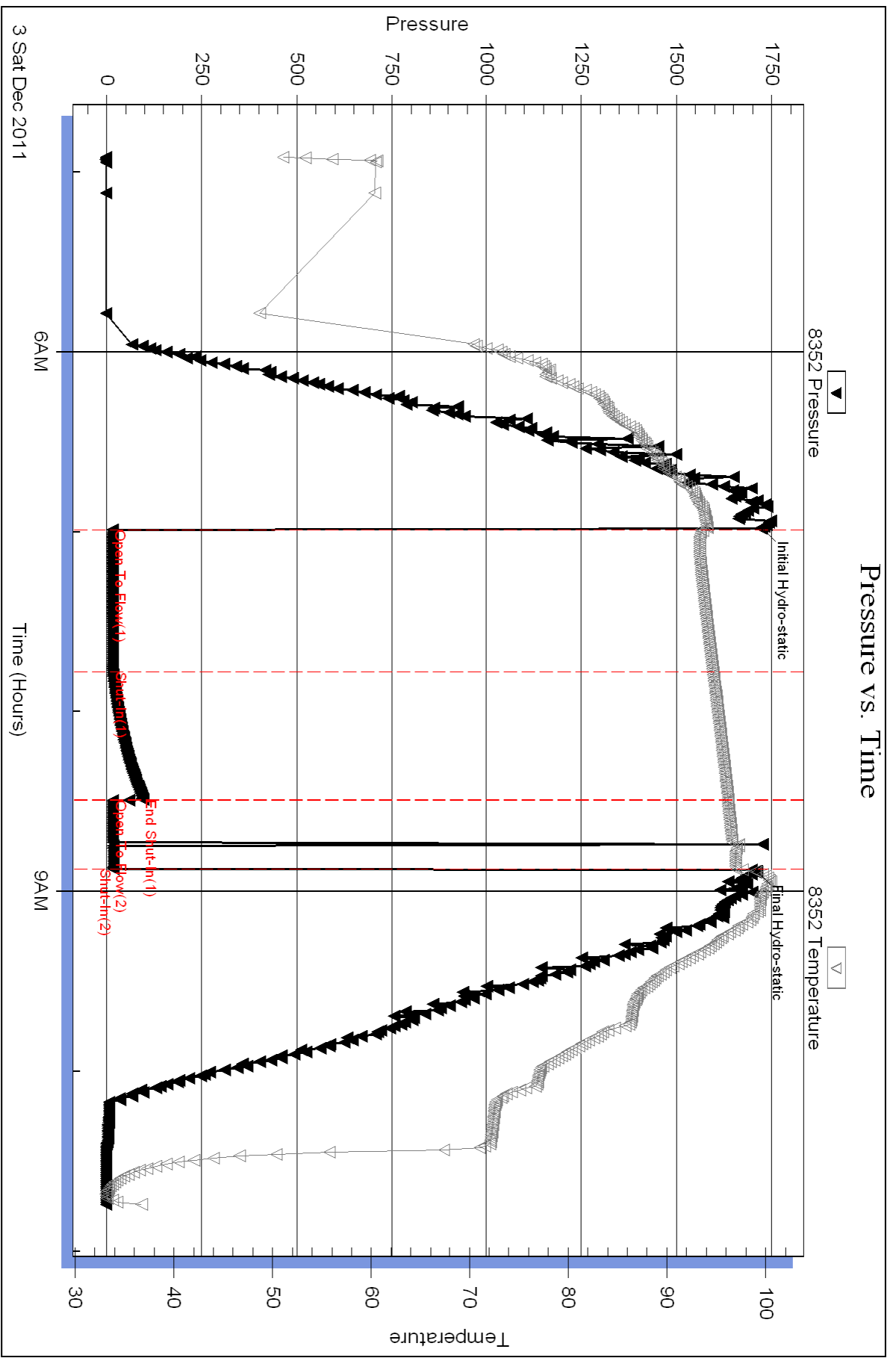
Mud Type: Gel Chem	Cushion Type:	Oil API:	deg API
Mud Weight: 9.00 lb/gal	Cushion Length: ft	Water Salinity:	ppm
Viscosity: 53.00 sec/qt	Cushion Volume: bbl		
Water Loss: 6.38 in <sup>3</sup>	Gas Cushion Type:		
Resistivity: ohm.m	Gas Cushion Pressure: psig		
Salinity: 2500.00 ppm			
Filter Cake: inches			

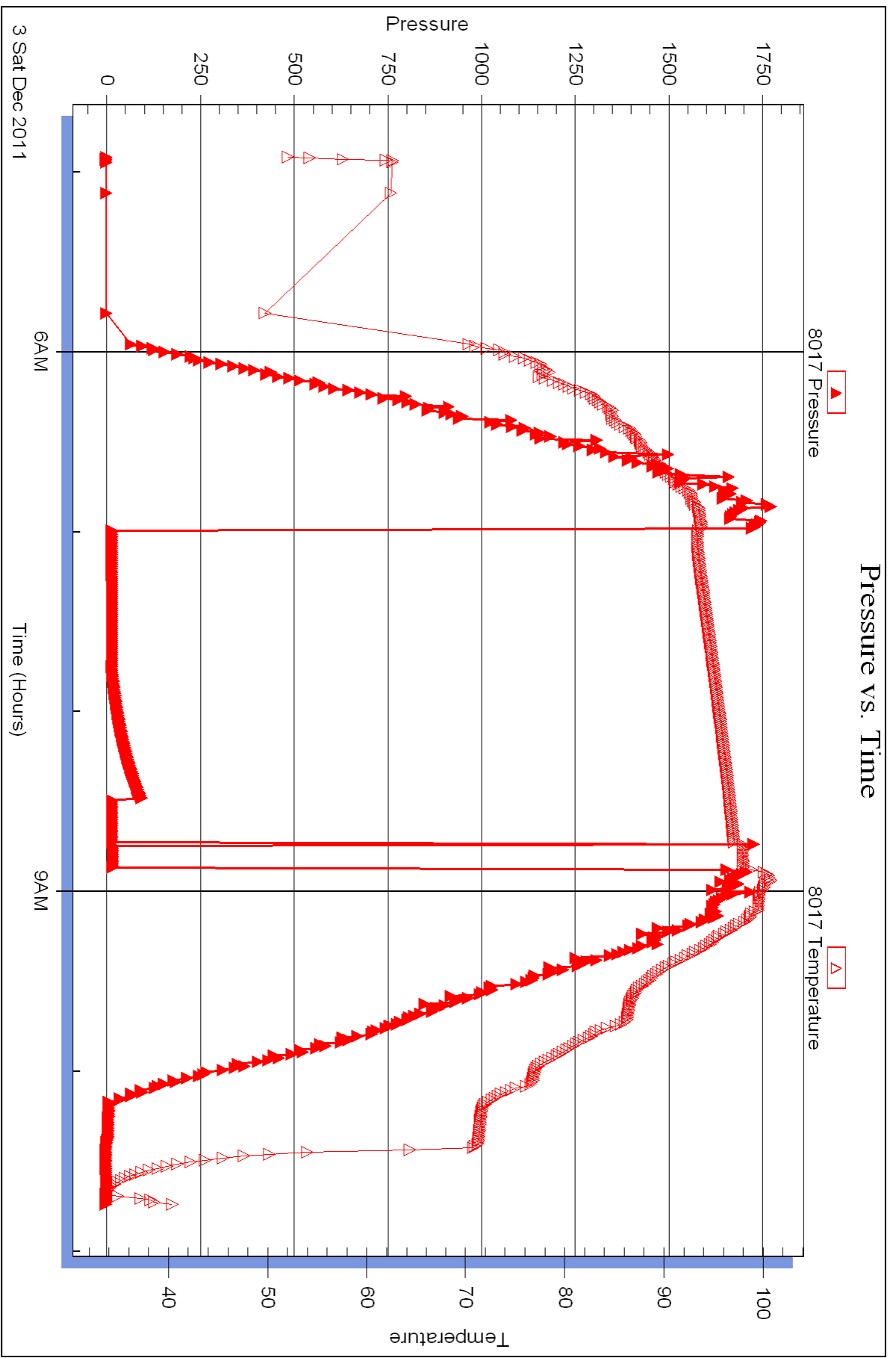
## Recovery Information

Recovery Table

Length ft	Description	Volume bbl
10.00	Mud w/ slight oil spks in tool	0.133

Total Length: 10.00 ft      Total Volume: 0.133 bbl  
 Num Fluid Samples: 0      Num Gas Bombs: 0      Serial #:  
 Laboratory Name:      Laboratory Location:  
 Recovery Comments:







## DRILL STEM TEST REPORT

Prepared For: **TDI Inc**

1310 Bison Rd  
Hays, KS 67601+9696

ATTN: Herb Deines

**Wolf #1**

**13-15s-19w Ellis,KS**

Start Date: 2011.12.03 @ 21:37:05

End Date: 2011.12.04 @ 02:54:50

Job Ticket #: 44582                      DST #: 3

Trilobite Testing, Inc  
PO Box 362 Hays, KS 67601  
ph: 785-625-4778 fax: 785-625-5620

Printed: 2011.12.05 @ 16:46:25



**TRILOBITE TESTING, INC.**

# DRILL STEM TEST REPORT

TDI Inc  
 1310 Bison Rd  
 Hays, KS 67601+9696  
 ATTN: Herb Deines

**13-15s-19w Ellis, KS**  
**Wolf #1**  
 Job Ticket: 44582      **DST#: 3**  
 Test Start: 2011.12.03 @ 21:37:05

## GENERAL INFORMATION:

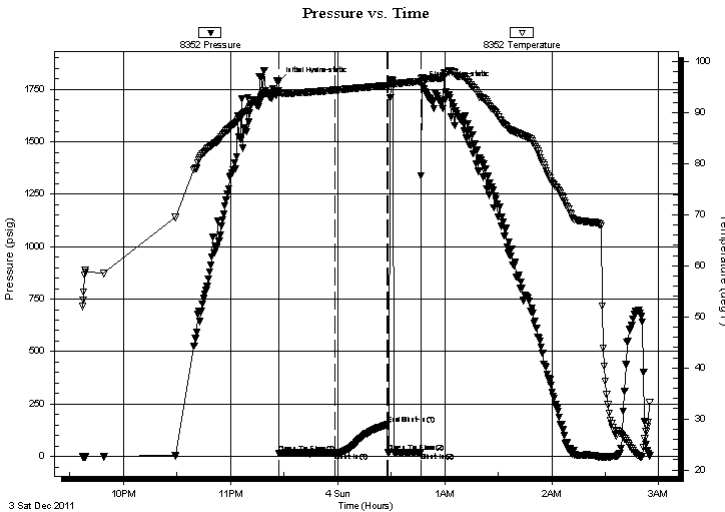
Formation: **Conglomerate**  
 Deviated: No Whipstock: ft (KB)  
 Time Tool Opened: 23:27:10  
 Time Test Ended: 02:54:50  
 Interval: **3572.00 ft (KB) To 3648.00 ft (KB) (TVD)**  
 Total Depth: 3648.00 ft (KB) (TVD)  
 Hole Diameter: 7.88 inches Hole Condition: Fair  
 Test Type: Conventional Bottom Hole (Reset)  
 Tester: Andy Carreira  
 Unit No: 39  
 Reference Elevations: 2038.00 ft (KB)  
 2029.00 ft (CF)  
 KB to GR/CF: 9.00 ft

## Serial #: 8352 Outside

Press @ Run Depth: 17.47 psig @ 3576.00 ft (KB) Capacity: 8000.00 psig  
 Start Date: 2011.12.03 End Date: 2011.12.04 Last Calib.: 2011.12.04  
 Start Time: 21:37:05 End Time: 02:54:50 Time On Btm: 2011.12.03 @ 23:26:50  
 Time Off Btm: 2011.12.04 @ 00:47:30

**TEST COMMENT:** IF:(30min) Blow Died in 15 min.  
 IS:(30min) No Return  
 FF:(15min) No Blow, Flushed, Surge, No Blow  
 FS: Pulled Tool

## PRESSURE SUMMARY



Time (Min.)	Pressure (psig)	Temp (deg F)	Annotation
0	1787.60	94.38	Initial Hydro-static
1	15.93	93.77	Open To Flow (1)
32	17.47	94.46	Shut-In(1)
61	151.23	95.33	End Shut-In(1)
62	17.73	95.30	Open To Flow (2)
80	21.05	96.15	Shut-In(2)
81	1766.15	96.78	Final Hydro-static

## Recovery

Length (ft)	Description	Volume (bbl)
10.00	Mud	0.13

\* Recovery from multiple tests

## Gas Rates

Choke (inches)	Pressure (psig)	Gas Rate (Mcf/d)







**TRILOBITE  
TESTING, INC.**

# DRILL STEM TEST REPORT

**TOOL DIAGRAM**

TDI Inc  
1310 Bison Rd  
Hays, KS 67601+9696  
ATTN: Herb Deines

**13-15s-19w Ellis,KS**  
**Wolf #1**  
Job Ticket: 44582      **DST#: 3**  
Test Start: 2011.12.03 @ 21:37:05

**Tool Information**

Drill Pipe:	Length: 3580.00 ft	Diameter: 3.70 inches	Volume: 47.61 bbl	Tool Weight: 2500.00 lb
Heavy Wt. Pipe:	Length: 0.00 ft	Diameter: 2.70 inches	Volume: 0.00 bbl	Weight set on Packer: 24000.00 lb
Drill Collar:	Length: 0.00 ft	Diameter: 2.25 inches	Volume: 0.00 bbl	Weight to Pull Loose: 50000.00 lb
			<u>Total Volume: 47.61 bbl</u>	Tool Chased 0.00 ft
Drill Pipe Above KB:	28.00 ft			String Weight: Initial 40000.00 lb
Depth to Top Packer:	3572.00 ft			Final 40000.00 lb
Depth to Bottom Packer:	ft			
Interval between Packers:	76.00 ft			
Tool Length:	96.00 ft			
Number of Packers:	2	Diameter: 6.75 inches		

Tool Comments:

<b>Tool Description</b>	<b>Length (ft)</b>	<b>Serial No.</b>	<b>Position</b>	<b>Depth (ft)</b>	<b>Accum. Lengths</b>
-------------------------	--------------------	-------------------	-----------------	-------------------	-----------------------

Change Over Sub	1.00			3553.00	
Shut In Tool	5.00			3558.00	
Hydraulic tool	5.00			3563.00	
Packer	5.00			3568.00	20.00      Bottom Of Top Packer
Packer	4.00			3572.00	
Stubb	1.00			3573.00	
Perforations	2.00			3575.00	
Change Over Sub	1.00			3576.00	
Recorder	0.00	8017	Inside	3576.00	
Recorder	0.00	8352	Outside	3576.00	
Drill Pipe	63.00			3639.00	
Change Over Sub	1.00			3640.00	
Perforations	5.00			3645.00	
Bullnose	3.00			3648.00	76.00      Bottom Packers & Anchor

**Total Tool Length: 96.00**



**TRILOBITE  
TESTING, INC.**

# DRILL STEM TEST REPORT

**FLUID SUMMARY**

TDI Inc **13-15s-19w Ellis, KS**  
 1310 Bison Rd **Wolf #1**  
 Hays, KS 67601+9696 Job Ticket: 44582 **DST#: 3**  
 ATTN: Herb Deines Test Start: 2011.12.03 @ 21:37:05

## Mud and Cushion Information

Mud Type: Gel Chem	Cushion Type:	Oil API:	deg API
Mud Weight: 9.00 lb/gal	Cushion Length: ft	Water Salinity:	ppm
Viscosity: 53.00 sec/qt	Cushion Volume: bbl		
Water Loss: 6.37 in <sup>3</sup>	Gas Cushion Type:		
Resistivity: ohm.m	Gas Cushion Pressure: psig		
Salinity: 2500.00 ppm			
Filter Cake: inches			

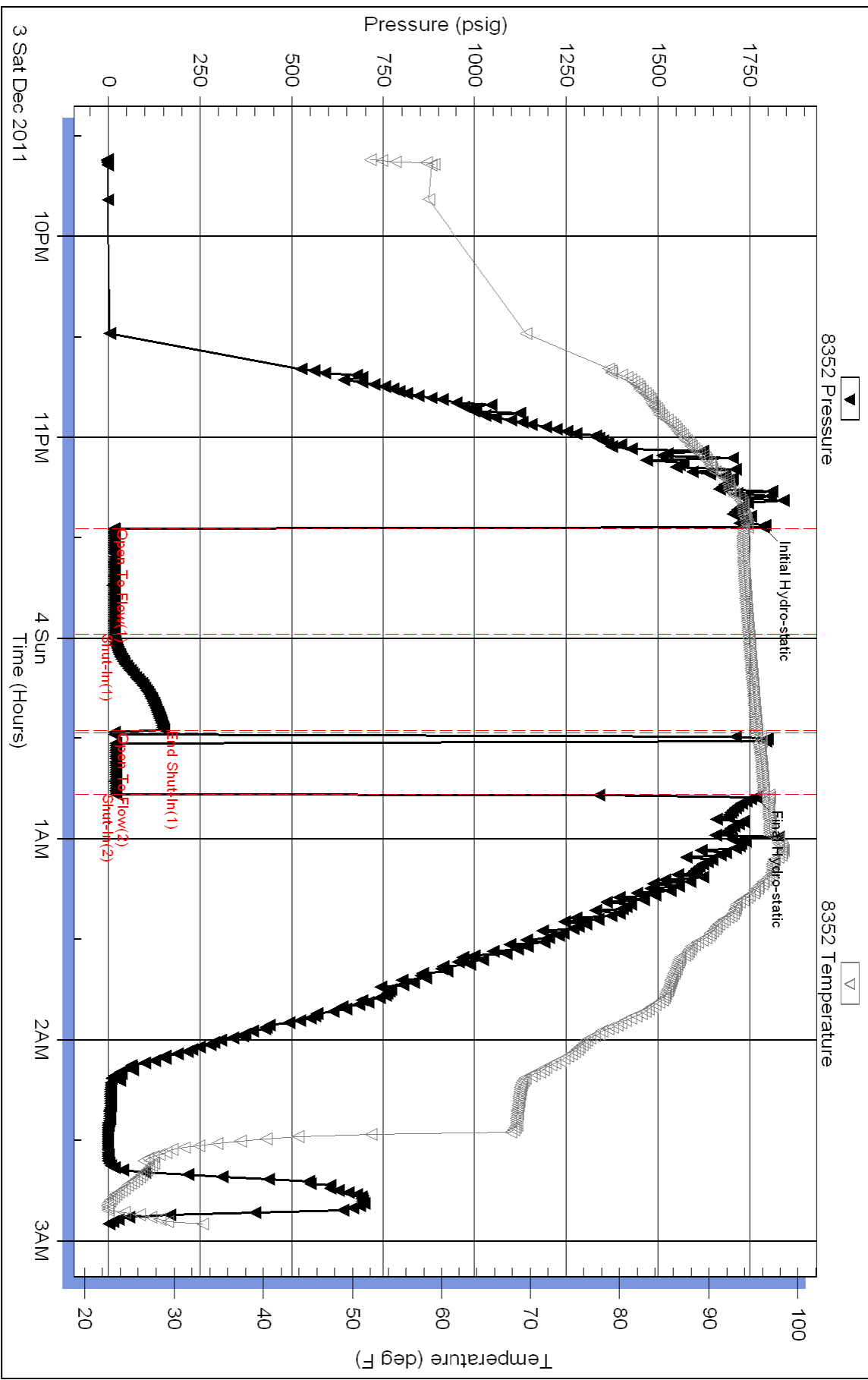
## Recovery Information

Recovery Table

Length ft	Description	Volume bbl
10.00	Mud	0.133

Total Length: 10.00 ft Total Volume: 0.133 bbl  
 Num Fluid Samples: 0 Num Gas Bombs: 0 Serial #:  
 Laboratory Name: Laboratory Location:  
 Recovery Comments:

# Pressure vs. Time



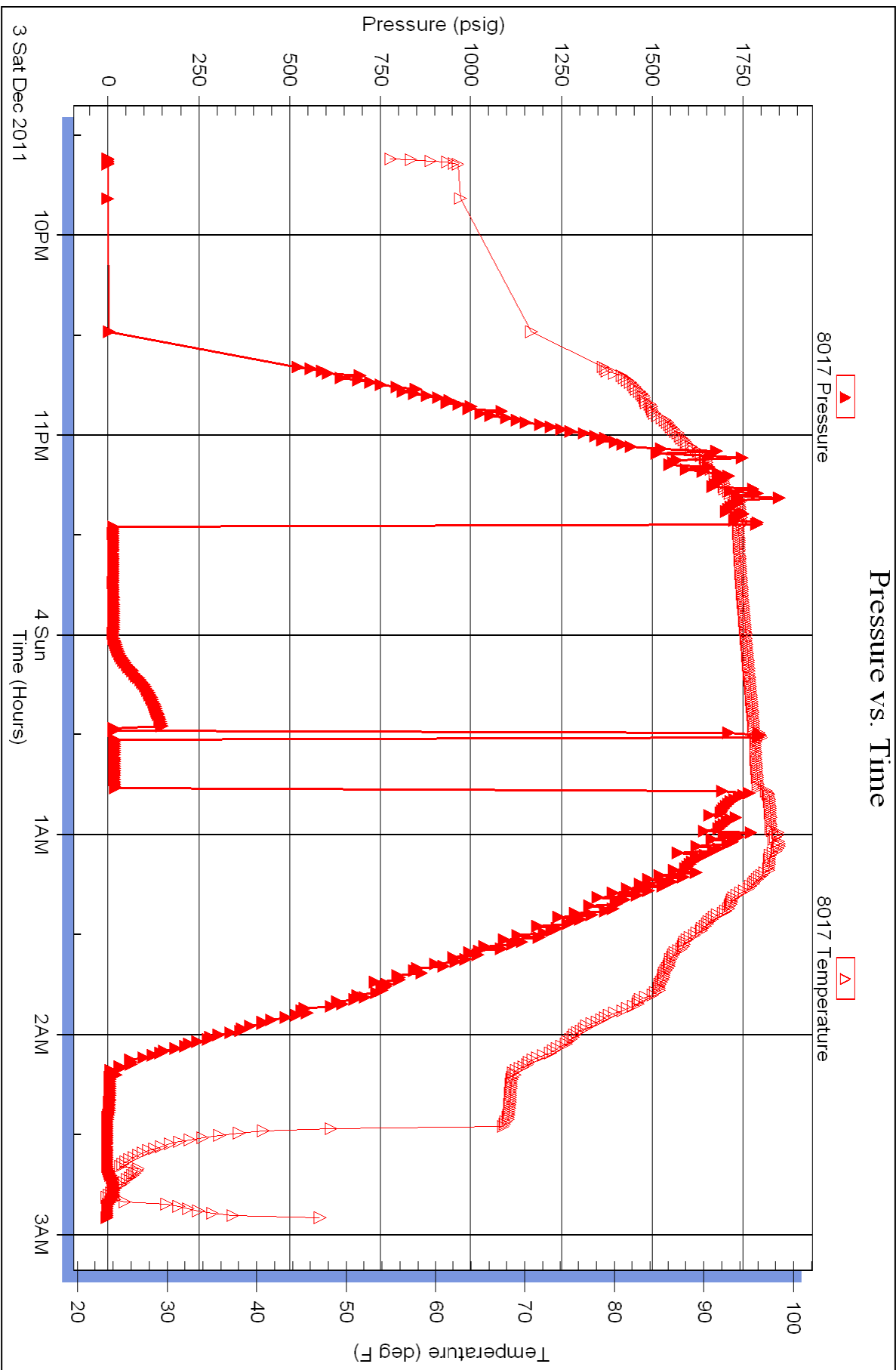
Serial #: 8017

Inside

TDI Inc

Wolf #1

DST Test Number: 3





# TRILOBITE TESTING INC.

P.O. Box 1733 • Hays, Kansas 67601

RECEIVED  
DEC 05 2011  
BY:

## Test Ticket

NO. 44580

Well Name & No. WOLF #1 Test No. 1 Date 12-2-11  
 Company TDI Elevation 2038 KB 2029 GL  
 Address 1310 BISON RD Hays, Ks 67601  
 Co. Rep / Geo. Herb Deines Rig Southwind 1  
 Location: Sec. 13 Twp. 13S Rge. 19W Co. Ellis State Ks

Interval Tested 3336-3389 Zone Tested LKC "A,C,D"  
 Anchor Length 53 Drill Pipe Run 3329 Mud Wt. 9.0  
 Top Packer Depth 3331 Drill Collars Run 0 Vis 53  
 Bottom Packer Depth 3336 Wt. Pipe Run 0 WL 6.4  
 Total Depth 3389 Chlorides 2500 ppm System LCM TR

Blow Description FP: BOB, 3min  
Test: Return surface blow died in 15 min.  
FP: BOB 7min  
Test: No Return

Rec	Feet of	%gas	%oil	%water	%mud
<u>570</u>	<u>Water, slightly gassy</u>				
Rec	Feet of	%gas	%oil	%water	%mud
Rec	Feet of	%gas	%oil	%water	%mud
Rec	Feet of	%gas	%oil	%water	%mud

Rec Total 570 BHT 107° Gravity API RW, 37 @ 29° F Chlorides 42000 ppm

(A) Initial Hydrostatic <u>1638</u>	<input checked="" type="checkbox"/> Test <u>1125"</u>	T-On Location <u>03:05</u>
(B) First Initial Flow <u>50</u>	<input type="checkbox"/> Jars	T-Started <u>04:25</u>
(C) First Final Flow <u>250</u>	<input type="checkbox"/> Safety Joint	T-Open <u>06:35</u>
(D) Initial Shut-In <u>451</u>	<input type="checkbox"/> Circ Sub	T-Pulled <u>09:05</u>
(E) Second Initial Flow <u>254</u>	<input type="checkbox"/> Hourly Standby	T-Out <u>11:25</u>
(F) Second Final Flow <u>345</u>	<input checked="" type="checkbox"/> Mileage <u>28 RT 39.20</u>	Comments
(G) Final Shut-In <u>445</u>	<input type="checkbox"/> Sampler	
(H) Final Hydrostatic <u>1575</u>	<input type="checkbox"/> Straddle	<input type="checkbox"/> Ruined Shale Packer
Initial Open <u>30</u>	<input type="checkbox"/> Shale Packer	<input type="checkbox"/> Ruined Packer
Initial Shut-In <u>45</u>	<input type="checkbox"/> Extra Packer	<input type="checkbox"/> Extra Copies
Final Flow <u>30</u>	<input type="checkbox"/> Extra Recorder	Sub Total <u>0</u>
Final Shut-In <u>45</u>	<input type="checkbox"/> Day Standby	Total <u>1164.20</u>
	<input type="checkbox"/> Accessibility	MP/DST Disc't
	Sub Total <u>1164.20</u>	

Approved By \_\_\_\_\_ Our Representative [Signature]  
 Trilobite Testing Inc. shall not be liable for damaged of any kind of the property or personnel of the one for whom a test is made, or for any loss suffered or sustained, directly or indirectly, through the use of its equipment, or its statements or opinion concerning the results of any test, tools lost or damaged in the hole shall be paid for at cost by the party for whom the test is made.





# TRILOBITE TESTING INC.

P.O. Box 1733 • Hays, Kansas 67601

RECEIVED  
DEC 05 2011

## Test Ticket

NO. 44581

4/10

BY: \_\_\_\_\_

Well Name & No. WOLF #1 Test No. 2 Date 12-3-11  
 Company TDI Elevation 2038 KB 2029 GL  
 Address 1310 BISON RD Hays, Ks. 67601  
 Co. Rep / Geo. HERB DEINES Rig Southernwind 1  
 Location: Sec. 13 Twp. 15S Rge. 19W Co. Ellis State Ks

Interval Tested 3475-3575 Zone Tested LKC "I, J, K, L"  
 Anchor Length 100' Drill Pipe Run 3485 Mud Wt. 9.0  
 Top Packer Depth 3470 Drill Collars Run 0 Vis 53  
 Bottom Packer Depth 3475 Wt. Pipe Run 0 WL 6.4  
 Total Depth 3575 Chlorides 1500 ppm System LCM ~~2500~~ TR  
 Blow Description IF: Weak blow, died in 40 min.  
ISI: NO RETURN  
FF: No blow, Flushed, surge, NO blow.  
FSD: —

Rec	Feet of	%gas	%oil	%water	%mud
<u>10</u>	<u>Mud w/ slight oil spks in Tool</u>				
Rec	Feet of	%gas	%oil	%water	%mud
Rec	Feet of	%gas	%oil	%water	%mud
Rec	Feet of	%gas	%oil	%water	%mud
Rec	Feet of	%gas	%oil	%water	%mud

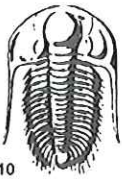
Rec Total 10' BHT 96° Gravity \_\_\_\_\_ API RW \_\_\_\_\_ @ \_\_\_\_\_ °F Chlorides \_\_\_\_\_ ppm

(A) Initial Hydrostatic 1724  Test 1125 T-On Location 02:45  
 (B) First Initial Flow 15  Jars \_\_\_\_\_ T-Started 04:55  
 (C) First Final Flow 16  Safety Joint \_\_\_\_\_ T-Open 07:00  
 (D) Initial Shut-In 95  Circ Sub \_\_\_\_\_ T-Pulled 08:50  
 (E) Second Initial Flow 16  Hourly Standby \_\_\_\_\_ T-Out 10:45  
 (F) Second Final Flow 17  Mileage 28 RT 39.20 Comments Pulled tool after  
 (G) Final Shut-In Pulled Tool  Sampler \_\_\_\_\_ Final Flow period.  
 (H) Final Hydrostatic 1711  Straddle \_\_\_\_\_  Ruined Shale Packer \_\_\_\_\_  
 Shale Packer \_\_\_\_\_  Ruined Packer \_\_\_\_\_  
 Extra Packer \_\_\_\_\_  Extra Copies \_\_\_\_\_  
 Initial Open 45  Extra Recorder \_\_\_\_\_ Sub Total 0  
 Initial Shut-In 45  Day Standby \_\_\_\_\_ Total 1164.20  
 Final Flow 20  Accessibility \_\_\_\_\_ MP/DST Disc't \_\_\_\_\_  
 Final Shut-In \_\_\_\_\_  
 Sub Total 1164.20

Approved By \_\_\_\_\_

Our Representative [Signature]

TriLOBite Testing Inc. shall not be liable for damaged of any kind of the property or personnel of the one for whom a test is made, or for any loss suffered or sustained, directly or indirectly, through the use of its equipment, or its statements or opinion concerning the results of any test, tools lost or damaged in the hole shall be paid for at cost by the party for whom the test is made.



# TRILOBITE TESTING INC.

P.O. Box 1733 • Hays, Kansas 67601

RECEIVED  
DEC 05 2011

## Test Ticket

NO. 44582

Well Name & No. WOLF #1 Test No. 3 Date 12-3-11  
 Company TDI Elevation 2038 KB 2029 GL  
 Address 1310 BISON RD HAYS, KS 67601  
 Co. Rep / Geo. Herb Dzines Rig Southwind 1  
 Location: Sec. 13 Twp. 15S Rge. 19W Co. Ellis State Ks.

Interval Tested 3572 - 3648 Zone Tested Conglomerate  
 Anchor Length 76' Drill Pipe Run 3580 Mud Wt. 9.0  
 Top Packer Depth 3567 Drill Collars Run 0 Vis 53  
 Bottom Packer Depth 3572 Wt. Pipe Run 0 WL 6.38  
 Total Depth 3648 Chlorides 2500 ppm System LCM TR

Blow Description 1st Blow sized in 15 min.  
ISI: No Return  
FF: No Blow, Flushed, surge, No Hold  
FSI: Pulled Tool

Rec	Feet of	%gas	%oil	%water	%mud
<u>10</u>	<u>Mud</u>				
Rec	Feet of	%gas	%oil	%water	%mud
Rec	Feet of	%gas	%oil	%water	%mud
Rec	Feet of	%gas	%oil	%water	%mud
Rec	Feet of	%gas	%oil	%water	%mud

Rec Total 10' BHT 96° Gravity \_\_\_\_\_ API RW \_\_\_\_\_ @ \_\_\_\_\_ °F Chlorides \_\_\_\_\_ ppm

(A) Initial Hydrostatic 1787  Test 1125' T-On Location 21:16  
 (B) First Initial Flow 15  Jars \_\_\_\_\_ T-Started 21:37  
 (C) First Final Flow 17  Safety Joint \_\_\_\_\_ T-Open 23:28  
 (D) Initial Shut-In 151  Circ Sub \_\_\_\_\_ T-Pulled 00:43  
 (E) Second Initial Flow 17  Hourly Standby \_\_\_\_\_ T-Out 02:55  
 (F) Second Final Flow 21  Mileage 28 RT 39.20 Comments Pulled tool after final flow period  
 (G) Final Shut-In \_\_\_\_\_  Sampler \_\_\_\_\_  
 (H) Final Hydrostatic 1766  Straddle \_\_\_\_\_  Ruined Shale Packer \_\_\_\_\_  
 Shale Packer \_\_\_\_\_  Ruined Packer \_\_\_\_\_  
 Initial Open 30  Extra Packer \_\_\_\_\_  Extra Copies \_\_\_\_\_  
 Initial Shut-In 30  Extra Recorder \_\_\_\_\_ Sub Total 0  
 Final Flow 15  Day Standby \_\_\_\_\_ Total 1164.20  
 Final Shut-In Pulled Tool  Accessibility \_\_\_\_\_ MP/DST Disc't \_\_\_\_\_  
 Sub Total 1164.20

Approved By \_\_\_\_\_ Our Representative Andy Co

TriLOBite Testing Inc. shall not be liable for damaged of any kind of the property or personnel of the one for whom a test is made, or for any loss suffered or sustained, directly or indirectly, through the use of its equipment, or its statements or opinion concerning the results of any test, tools lost or damaged in the hole shall be paid for at cost by the party for whom the test is made.