



**TRILOBITE TESTING, INC.**

# DRILL STEM TEST REPORT

Russell Oil  
 PO Box 8050  
 Edmond, Ok 73083  
 ATTN: Kitt Noah

**Steinle #2-32**  
**32-15-14 Russell, Ks**  
 Job Ticket: 45161 **DST#: 3**  
 Test Start: 2011.10.10 @ 14:36:29

## GENERAL INFORMATION:

Formation: **LKC "H-J"**  
 Deviated: No Whipstock: ft (KB)  
 Time Tool Opened: 16:42:29  
 Time Test Ended: 21:40:59  
**Interval: 3280.00 ft (KB) To 3340.00 ft (KB) (TVD)**  
 Total Depth: 3340.00 ft (KB) (TVD)  
 Hole Diameter: 7.88 inches Hole Condition: Good  
 Test Type: Conventional Bottom Hole (Reset)  
 Tester: Brian Fairbank  
 Unit No: 41  
 Reference Elevations: 1931.00 ft (KB)  
 1924.00 ft (CF)  
 KB to GR/CF: 7.00 ft

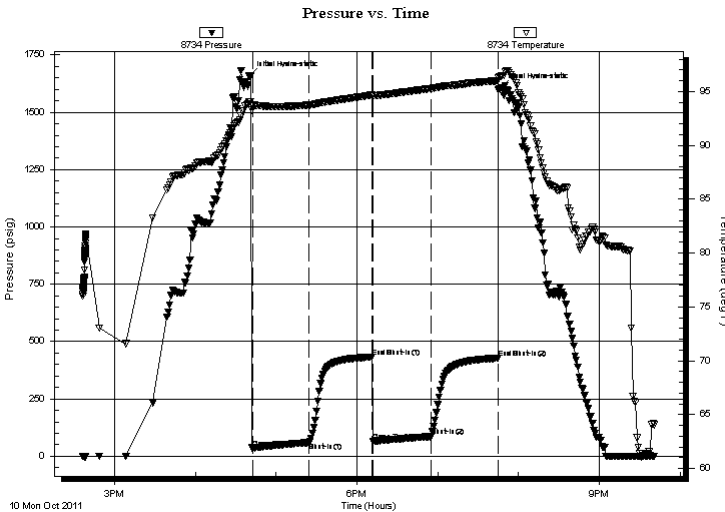
## Serial #: 8734

**Outside**

Press @ Run Depth: 84.85 psig @ 3285.00 ft (KB) Capacity: 8000.00 psig  
 Start Date: 2011.10.10 End Date: 2011.10.10 Last Calib.: 2011.10.10  
 Start Time: 14:36:30 End Time: 21:40:59 Time On Btm: 2011.10.10 @ 16:40:29  
 Time Off Btm: 2011.10.10 @ 19:46:59

**TEST COMMENT:** IFP - BOB 14 min  
 ISI - 1/4" blow back - died 11 min  
 FFP - BOB 8 min  
 FSI - 1" blow back - died 22 min

## PRESSURE SUMMARY



Time (Min.)	Pressure (psig)	Temp (deg F)	Annotation
0	1658.92	94.04	Initial Hydro-static
2	34.73	93.75	Open To Flow (1)
44	59.34	93.74	Shut-In(1)
91	432.05	94.67	End Shut-In(1)
92	65.85	94.59	Open To Flow (2)
135	84.85	95.27	Shut-In(2)
184	427.56	95.99	End Shut-In(2)
187	1609.42	96.41	Final Hydro-static

## Recovery

Length (ft)	Description	Volume (bbl)
14.00	MW 80%W, 20%M	0.20
110.00	GW & OCM 50%G, 20%O, 10%W, 20%M	1.54
10.00	GHOCM 10%G, 35%O, 55%M	0.14
1.00	FREE OIL TSTM	0.01

\* Recovery from multiple tests

## Gas Rates

Choke (inches)	Pressure (psig)	Gas Rate (Mcf/d)



**TRILOBITE  
TESTING, INC.**

# DRILL STEM TEST REPORT

**FLUID SUMMARY**

Russell Oil  
PO Box 8050  
Edmond, Ok 73083  
ATTN: Kitt Noah

**Steinle #2-32**  
**32-15-14 Russell, Ks**  
Job Ticket: 45161      **DST#: 3**  
Test Start: 2011.10.10 @ 14:36:29

## Mud and Cushion Information

Mud Type: Gel Chem	Cushion Type:	Oil API:	deg API
Mud Weight: 9.00 lb/gal	Cushion Length: ft	Water Salinity:	50000 ppm
Viscosity: 54.00 sec/qt	Cushion Volume: bbl		
Water Loss: 5.40 in <sup>3</sup>	Gas Cushion Type:		
Resistivity: ohm.m	Gas Cushion Pressure: psig		
Salinity: 4900.00 ppm			
Filter Cake: inches			

## Recovery Information

Recovery Table

Length ft	Description	Volume bbl
14.00	MW 80%W, 20%M	0.196
110.00	GW & OCM 50%G, 20%O, 10%W, 20%M	1.543
10.00	GHOCM 10%G, 35%O, 55%M	0.140
1.00	FREE OIL TSTM	0.014

Total Length: 135.00 ft      Total Volume: 1.893 bbl  
Num Fluid Samples: 0      Num Gas Bombs: 0      Serial #:  
Laboratory Name:      Laboratory Location:  
Recovery Comments:

