

## DRILL STEM TEST REPORT

Prepared For: **Vess Oil Corporation**

1700 Waterfront Parkway Building 500  
Wichita, Kansas 67206-6619

ATTN: Bill Stout

**Wilson "A" #438**

**8-25s-5w Butler**

Start Date: 2011.11.20 @ 03:15:00

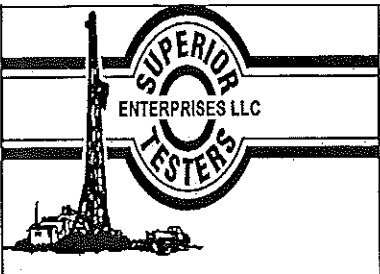
End Date: 2011.11.20 @ 00:00:00

Job Ticket #: 15856                      DST #: 1

Superior Testers Enterprises LLC  
PO Box 138 Great Bend KS 67530  
1-800-792-6902

Printed: 2011.11.25 @ 13:07:34

Vess Oil Corporation  
8-25s-5w Butler  
Wilson "A" #438  
DST # 1  
Viola  
2011.11.20



# DRILL STEM TEST REPORT

Vess Oil Corporation  
 1700 Waterfront Parkway Building 500  
 Wichita, Kansas 67206-6619  
 ATTN: Bill Stout

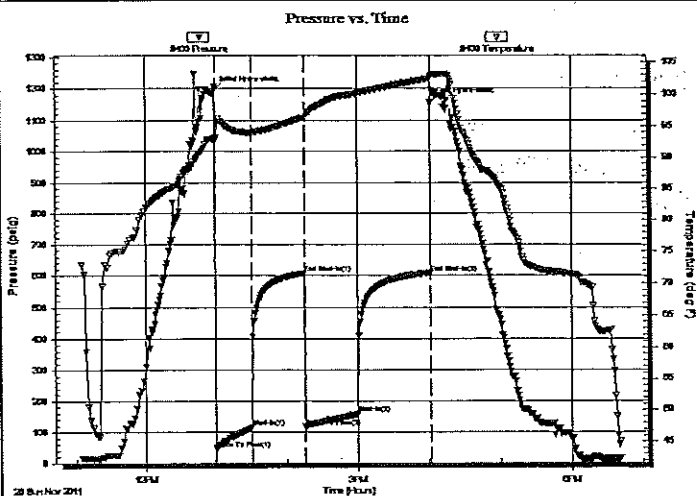
8-25s-5w Butler  
 Wilson "A" #438  
 Job Ticket: 15856 DST#: 1  
 Test Start: 2011.11.20 @ 03:15:00

## GENERAL INFORMATION:

Formation: Viola  
 Deviated: No Whipstock: ft (KB)  
 Time Tool Opened: 00:00:00  
 Time Test Ended: 00:00:00  
 Interval: 2415.00 ft (KB) To 2450.00 ft (KB) (TVD)  
 Total Depth: 2450.00 ft (KB) (TVD)  
 Hole Diameter: 7.88 inches Hole Condition: Fair  
 Test Type: Conventional Bottom Hole (Initial)  
 Tester: Gene Budig  
 Unit No: 3335-275  
 Reference Elevations: 1387.00 ft (KB)  
 1382.00 ft (CF)  
 KB to GR/CF: 5.00 ft

Serial #: 8400 Outside  
 Press@RunDepth: 607.77 psig @ 2447.00 ft (KB) Capacity: 5000.00 psig  
 Start Date: 2011.11.20 End Date: 2011.11.20 Last Calib.: 1899.12.30  
 Start Time: 11:04:45 End Time: 18:41:15 Time On Btm: 2011.11.20 @ 12:59:45  
 Time Off Btm: 2011.11.20 @ 16:01:45

TEST COMMENT: 1st Opening 30 Minutes Weak building blow built to 9 inches into the water  
 1st Shut-In 45 Minutes No blow back  
 2nd Opening 45 Minutes Weak blow built to 10 1/2 inches into the water  
 2nd Shut-In 60 Minutes No blow back



## PRESSURE SUMMARY

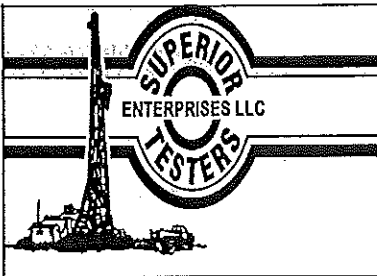
Time (Min.)	Pressure (psig)	Temp (deg F)	Annotation
0	1193.62	92.90	Initial Hydro-static
1	46.95	92.66	Open To Flow (1)
32	115.53	93.92	Shut-In(1)
76	606.40	96.40	End Shut-In(1)
77	117.90	96.25	Open To Flow (2)
121	158.39	100.11	Shut-In(2)
182	607.77	102.48	End Shut-In(2)
182	1157.51	102.73	Final Hydro-static

## Recovery

Length (ft)	Description	Volume (bbl)
90.00	Clean Gassy Oil	0.44
0.00	10% Gas 90% Oil Gravity 37 Corrected	0.00
60.00	Oil cut mud	0.30
0.00	10% Oil 90% Mud	0.00
60.00	Oil and gas cut mud	0.39
0.00	5% Gas 15% Oil 80% Mud	0.00

## Gas Rates

Choke (Inches)	Pressure (psig)	Gas Rate (Mcf/d)



# DRILL STEM TEST REPORT

Vess Oil Corporation  
 1700 Waterfront Parkway Building 500  
 Wichita, Kansas 67206-6619  
 ATTN: Bill Stout

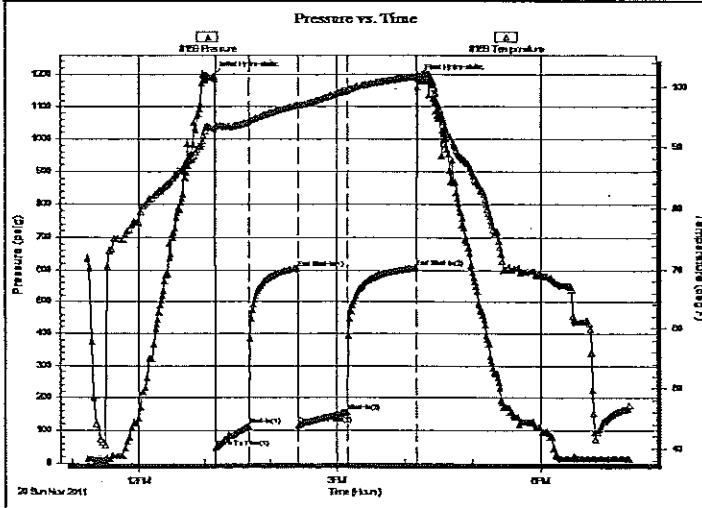
8-25s-5w Butler  
 Wilson "A" #438  
 Job Ticket: 15856 DST#: 1  
 Test Start: 2011.11.20 @ 03:15:00

## GENERAL INFORMATION:

Formation: Viola  
 Deviated: No Whipstock: ft (KB)  
 Time Tool Opened: 00:00:00  
 Time Test Ended: 00:00:00  
 Interval: 2415.00 ft (KB) To 2450.00 ft (KB) (TVD)  
 Total Depth: 2450.00 ft (KB) (TVD)  
 Hole Diameter: 7.88 inches Hole Condition: Fair  
 Test Type: Conventional Bottom Hole (Initial)  
 Tester: Gene Budig  
 Unit No: 3335-275  
 Reference Elevations: 1387.00 ft (KB)  
 1382.00 ft (CF)  
 KB to GR/CF: 5.00 ft

Serial #: 8159 Inside  
 Press@RunDepth: 607.22 psig @ 2446.00 ft (KB) Capacity: psig  
 Start Date: 2011.11.20 End Date: 2011.11.20 Last Calib.: 1899.12.30  
 Start Time: 11:13:40 End Time: 19:19:10 Time On Btm: 2011.11.20 @ 13:08:40  
 Time Off Btm: 2011.11.20 @ 16:11:40

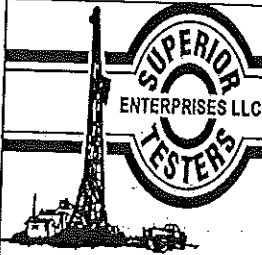
TEST COMMENT: 1st Opening 30 Minutes Weak building blow built to 9 inches into the water  
 1st Shut-In 45 Minutes No blow back  
 2nd Opening 45 Minutes Weak blow built to 10 1/2 inches into the water  
 2nd Shut-In 60 Minutes No blow back



PRESSURE SUMMARY			
Time (Min.)	Pressure (psig)	Temp (deg F)	Annotation
0	1195.45	93.03	Initial Hydro-static
2	46.83	93.51	Open To Flow (1)
32	114.10	94.19	Shut-In(1)
76	606.10	97.06	End Shut-In(1)
77	117.05	96.90	Open To Flow (2)
121	156.60	99.46	Shut-In(2)
182	607.22	101.72	End Shut-In(2)
183	1187.20	101.96	Final Hydro-static

Recovery		
Length (ft)	Description	Volume (bbl)
90.00	Clean Gassy Oil	0.44
0.00	10% Gas 90% Oil Gravity 37 Corrected	0.00
60.00	Oil cut mud	0.30
0.00	10% Oil 90% Mud	0.00
60.00	Oil and gas cut mud	0.39
0.00	5% Gas 15% Oil 80% Mud	0.00

Gas Rates			
	Choke (inches)	Pressure (psig)	Gas Rate (Mcf/d)



# DRILL STEM TEST REPORT

TOOL DIAG

Vess Oil Corporation  
 1700 Waterfront Parkway Building 500  
 Wichita, Kansas 67206-6619

8-25s-5w Butler

Wilson "A" #438

Job Ticket: 15856

DST#: 1

ATTN: Bill Stout

Test Start: 2011.11.20 @ 03:15:00

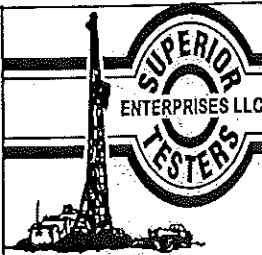
## Tool Information

Drill Pipe:	Length: 2234.00 ft	Diameter: 2.86 inches	Volume: 17.75 bbl	Tool Weight: 2000.00 lb
Heavy Wt. Pipe:	Length: 0.00 ft	Diameter: 0.00 inches	Volume: 0.00 bbl	Weight set on Packer: 20000.00 lb
Drill Collar:	Length: 180.00 ft	Diameter: 2.25 inches	Volume: 0.89 bbl	Weight to Pull Loose: 43000.00 lb
			<u>Total Volume: 18.64 bbl</u>	Tool Chased: 0.00 ft
Drill Pipe Above KB:	27.00 ft			String Weight: Initial 36000.00 lb
Depth to Top Packer:	2415.00 ft			Final 36000.00 lb
Depth to Bottom Packer:	ft			
Interval between Packers:	35.00 ft			
Tool Length:	63.00 ft			
Number of Packers:	2	Diameter: 6.75 inches		

Tool Comments:

## Tool Description

Tool Description	Length (ft)	Serial No.	Position	Depth (ft)	Accum. Lengths	
Shut-In Tool	5.00			2392.00		
Hydraulic Tool	5.00			2397.00		
Jars	6.00			2403.00		
Safety Joint	2.00			2405.00		
Top Packer	5.00			2410.00		
Packer	5.00			2415.00	28.00	Bottom Of Top Packer
Anchor	30.00			2445.00		
Recorder	1.00	8159	Inside	2446.00		
Recorder	1.00	8400	Outside	2447.00		
Bull Plug	3.00			2450.00	35.00	Anchor Tool
<b>Total Tool Length:</b>	<b>63.00</b>					



# DRILL STEM TEST REPORT

FLUID SUMMARY

Vess Oil Corporation  
 1700 Waterfront Parkway Building 500  
 Wichita, Kansas 67206-6619  
 ATTN: Bill Stout

8-25s-5w Butler  
 Wilson "A" #438  
 Job Ticket: 15856      DST#: 1  
 Test Start: 2011.11.20 @ 03:15:00

## Mud and Cushion Information

Mud Type: Gel Chem  
 Mud Weight: 9.00 lb/gal  
 Viscosity: 41.00 sec/qt  
 Water Loss: 10.39 in<sup>3</sup>  
 Resistivity: ohm.m  
 Salinity: 800.00 ppm  
 Filter Cake: inches

Cushion Type:  
 Cushion Length: ft  
 Cushion Volume: bbl  
 Gas Cushion Type:  
 Gas Cushion Pressure: psig

Oil API: deg API  
 Water Salinity: ppm

## Recovery Information

Recovery Table

Length ft	Description	Volume bbl
90.00	Clean Gassy Oil	0.443
0.00	10% Gas 90% Oil Gravity 37 Corrected	0.000
60.00	Oil cut mud	0.295
0.00	10% Oil 90% Mud	0.000
60.00	Oil and gas cut mud	0.386
0.00	5% Gas 15% Oil 80% Mud	0.000
60.00	Oil cut mud	0.477
0.00	15% Oil 85% Mud	0.000

Total Length: 270.00 ft      Total Volume: 1.601 bbl  
 Num Fluid Samples: 0      Num Gas Bombs: 0      Serial #:  
 Laboratory Name:      Laboratory Location:  
 Recovery Comments:

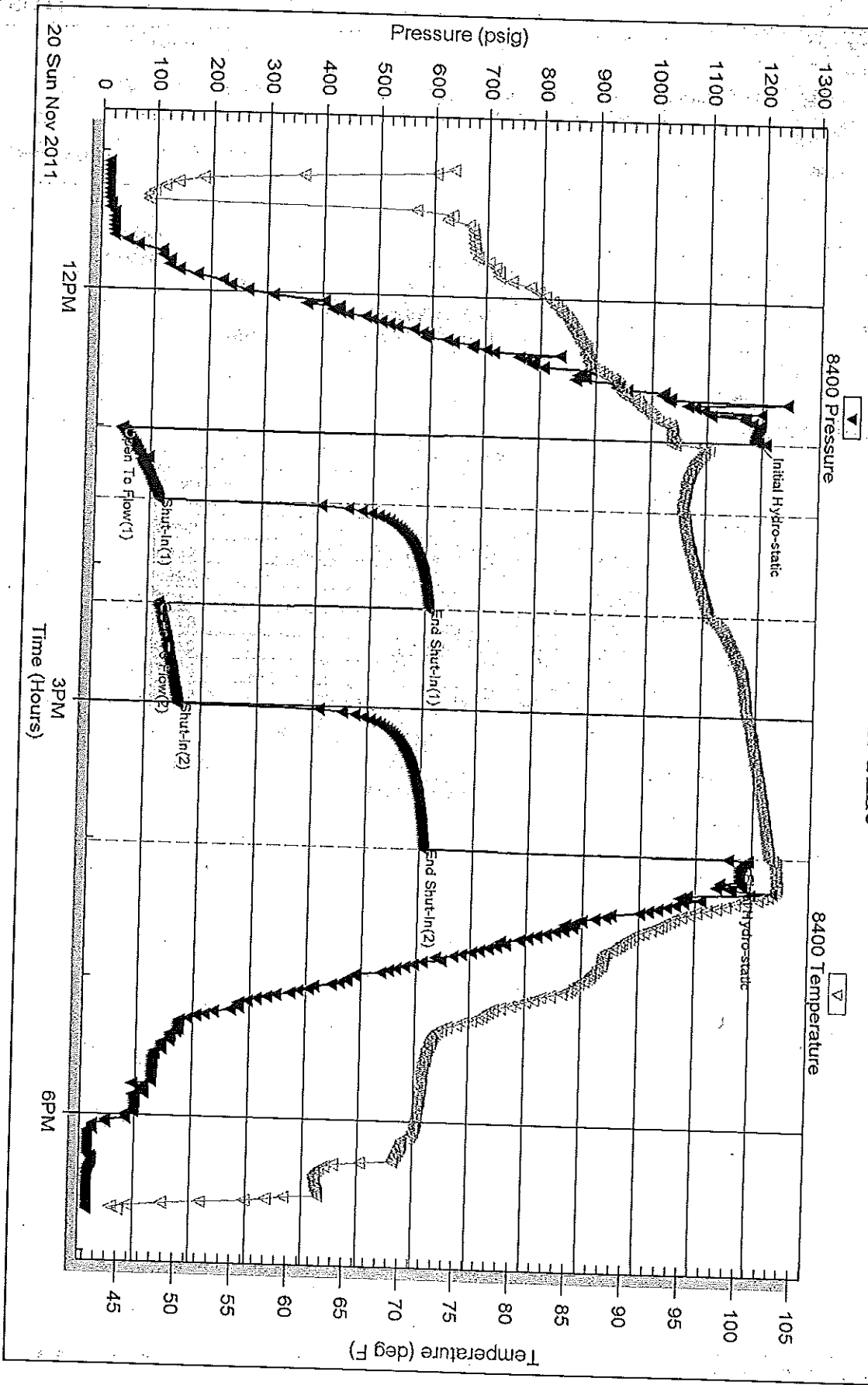
Serial #: 8400

Outside Vess Oil Corporation

Wilson "A" #438

DST Test Number: 1

### Pressure vs. Time



Superior Testers Enterprises LLC

Ref. No: 15856

Printed: 2011.11.25 @ 13:07:35

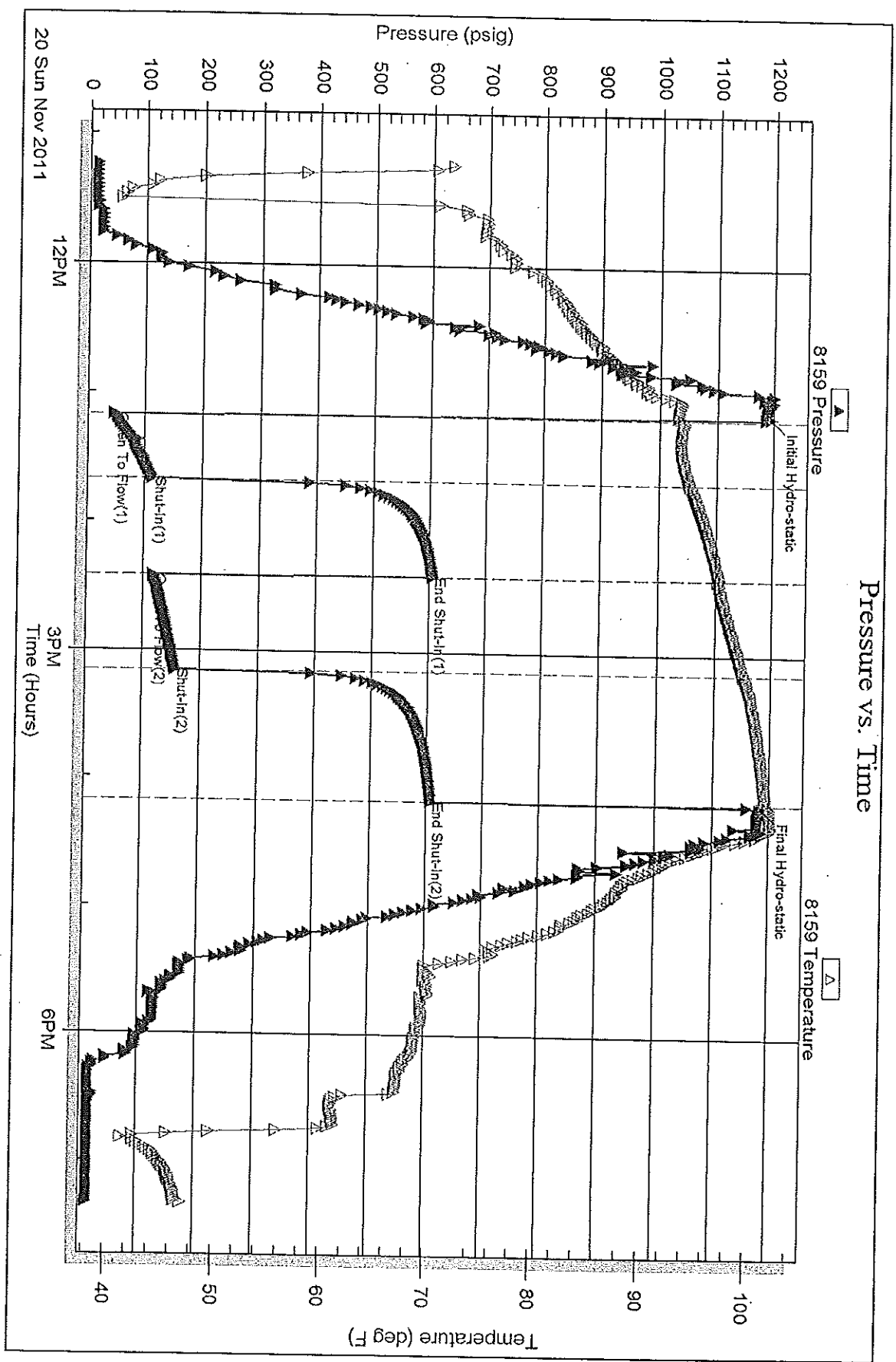
Serial #: 8159

Inside

Vess Oil Corporation

Wilson "A" #438

DST Test Number: 1



Superior Testers Enterprises LLC

Ref. No: 15856

Printed: 2011.11.25 @ 13:07:35