



DRILL STEM TEST REPORT

Prepared For: **Sam Gary Jr. & Ass. INC,**

1515 Wynkoop St. Suite 700
Denver CO, 80202

ATTN: Clayton Camozzi

Bogleigh Wallah 2-4

4-16s-16w Rush

Start Date: 2011.10.04 @ 20:35:48

End Date: 2011.10.05 @ 03:07:18

Job Ticket #: 44622 DST #: 3

Trilobite Testing, Inc
PO Box 362 Hays, KS 67601
ph: 785-625-4778 fax: 785-625-5620

Printed: 2011.10.05 @ 09:59:18



**TRILOBITE
TESTING, INC.**

DRILL STEM TEST REPORT

Sam Gary Jr. & Ass. INC,
1515 Wynkoop St. Suite 700
Denver CO, 80202
ATTN: Clayton Camozzi

4-16s-16w Rush

Bogleigh Wallah 2-4

Job Ticket: 44622

DST#: 3

Test Start: 2011.10.04 @ 20:35:48

GENERAL INFORMATION:

Formation: **KC "H-J"**

Deviated: No Whipstock: ft (KB)

Time Tool Opened: 22:13:18

Time Test Ended: 03:07:18

Test Type: Conventional Bottom Hole (Reset)

Tester: Brett Dickinson

Unit No: 47

Interval: ft (KB) To ft (KB) (TVD)

Reference Elevations: 1870.00 ft (KB)

Total Depth: 3358.00 ft (KB) (TVD)

1862.00 ft (CF)

Hole Diameter: 7.88 inches Hole Condition: Fair

KB to GR/CF: 8.00 ft

Serial #: 6753

Inside

Press @ Run Depth: 27.77 psig @ 3347.00 ft (KB)

Capacity: 8000.00 psig

Start Date: 2011.10.04 End Date: 2011.10.05

Last Calib.: 2011.10.05

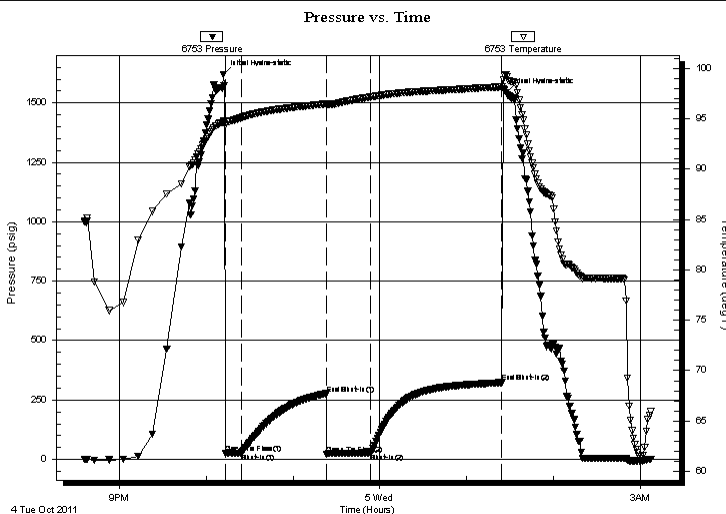
Start Time: 20:35:53 End Time: 03:07:17

Time On Btm: 2011.10.04 @ 22:11:48

Time Off Btm: 2011.10.05 @ 01:27:18

TEST COMMENT: 10min IF-3in blow
60min ISI-No blow
30min FF-BOB in 1/2min
90min FSI-No blow

PRESSURE SUMMARY



| Time (Min.) | Pressure (psig) | Temp (deg F) | Annotation |
|-------------|-----------------|--------------|----------------------|
| 0 | 1620.03 | 94.70 | Initial Hydro-static |
| 2 | 25.96 | 94.33 | Open To Flow (1) |
| 13 | 27.55 | 95.12 | Shut-In(1) |
| 71 | 276.75 | 96.48 | End Shut-In(1) |
| 72 | 22.09 | 96.37 | Open To Flow (2) |
| 102 | 27.77 | 97.16 | Shut-In(2) |
| 193 | 323.37 | 98.17 | End Shut-In(2) |
| 196 | 1544.80 | 99.40 | Final Hydro-static |

Recovery

| Length (ft) | Description | Volume (bbl) |
|-------------|----------------|--------------|
| 10.00 | VSOCM 2%O 98%M | 0.05 |
| 0.00 | 410ft GIP | 0.00 |
| | | |
| | | |
| | | |

Gas Rates

| | Choke (inches) | Pressure (psig) | Gas Rate (Mcf/d) |
|--|----------------|-----------------|------------------|
| | | | |

* Recovery from multiple tests



**TRILOBITE
TESTING, INC.**

DRILL STEM TEST REPORT

TOOL DIAGRAM

Sam Gary Jr. & Ass. INC,
1515 Wynkoop St. Suite 700
Denver CO, 80202
ATTN: Clayton Camozzi

4-16s-16w Rush
Bogleigh Wallah 2-4
Job Ticket: 44622 **DST#: 3**
Test Start: 2011.10.04 @ 20:35:48

Tool Information

| | | | | |
|---------------------------|--------------------|-----------------------|--------------------------------|------------------------------------|
| Drill Pipe: | Length: 3220.00 ft | Diameter: 3.80 inches | Volume: 45.17 bbl | Tool Weight: 2500.00 lb |
| Heavy Wt. Pipe: | Length: 0.00 ft | Diameter: 0.00 inches | Volume: 0.00 bbl | Weight set on Packer: 25000.00 lb |
| Drill Collar: | Length: 31.00 ft | Diameter: 2.25 inches | Volume: 0.15 bbl | Weight to Pull Loose: 50000.00 lb |
| | | | <u>Total Volume: 45.32 bbl</u> | Tool Chased 0.00 ft |
| Drill Pipe Above KB: | 6.00 ft | | | String Weight: Initial 46000.00 lb |
| Depth to Top Packer: | 3280.00 ft | | | Final 46000.00 lb |
| Depth to Bottom Packer: | ft | | | |
| Interval between Packers: | 78.00 ft | | | |
| Tool Length: | 113.00 ft | | | |
| Number of Packers: | 2 | Diameter: 6.75 inches | | |

Tool Comments:

| Tool Description | Length (ft) | Serial No. | Position | Depth (ft) | Accum. Lengths |
|-------------------------|--------------------|-------------------|-----------------|-------------------|-----------------------|
|-------------------------|--------------------|-------------------|-----------------|-------------------|-----------------------|

| | | | | | |
|-----------------|-------|------|---------|---------|------------------------------------|
| Change Over Sub | 1.00 | | | 3246.00 | |
| Recorder | 0.00 | 8319 | Inside | 3246.00 | |
| Blank Spacing | 5.00 | | | 3251.00 | |
| Shut In Tool | 5.00 | | | 3256.00 | |
| Sampler | 2.00 | | | 3258.00 | |
| Hydraulic tool | 5.00 | | | 3263.00 | |
| Jars | 5.00 | | | 3268.00 | |
| Safety Joint | 2.00 | | | 3270.00 | |
| Packer | 5.00 | | | 3275.00 | 35.00 Bottom Of Top Packer |
| Packer | 5.00 | | | 3280.00 | |
| Stubb | 1.00 | | | 3281.00 | |
| Perforations | 2.00 | | | 3283.00 | |
| Change Over Sub | 1.00 | | | 3284.00 | |
| Perforations | 62.00 | | | 3346.00 | |
| Change Over Sub | 1.00 | | | 3347.00 | |
| Recorder | 0.00 | 6753 | Inside | 3347.00 | |
| Recorder | 0.00 | 8369 | Outside | 3347.00 | |
| Perforations | 8.00 | | | 3355.00 | |
| Bullnose | 3.00 | | | 3358.00 | 78.00 Bottom Packers & Anchor |

Total Tool Length: 113.00



**TRILOBITE
TESTING, INC.**

DRILL STEM TEST REPORT

FLUID SUMMARY

Sam Gary Jr. & Ass. INC,

4-16s-16w Rush

1515 Wynkoop St. Suite 700
Denver CO, 80202

Bogleigh Wallah 2-4

Job Ticket: 44622

DST#: 3

ATTN: Clayton Camozzi

Test Start: 2011.10.04 @ 20:35:48

Mud and Cushion Information

Mud Type: Gel Chem

Cushion Type:

Oil API:

deg API

Mud Weight: 9.00 lb/gal

Cushion Length:

ft

Water Salinity:

ppm

Viscosity: 48.00 sec/qt

Cushion Volume:

bbbl

Water Loss: 10.19 in³

Gas Cushion Type:

Resistivity: ohm.m

Gas Cushion Pressure:

psig

Salinity: 7100.00 ppm

Filter Cake: inches

Recovery Information

Recovery Table

| Length ft | Description | Volume bbbl |
|--------------|----------------|----------------|
| 10.00 | VSOCM 2%O 98%M | 0.049 |
| 0.00 | 410ft GIP | 0.000 |

Total Length: 10.00 ft Total Volume: 0.049 bbl

Num Fluid Samples: 0

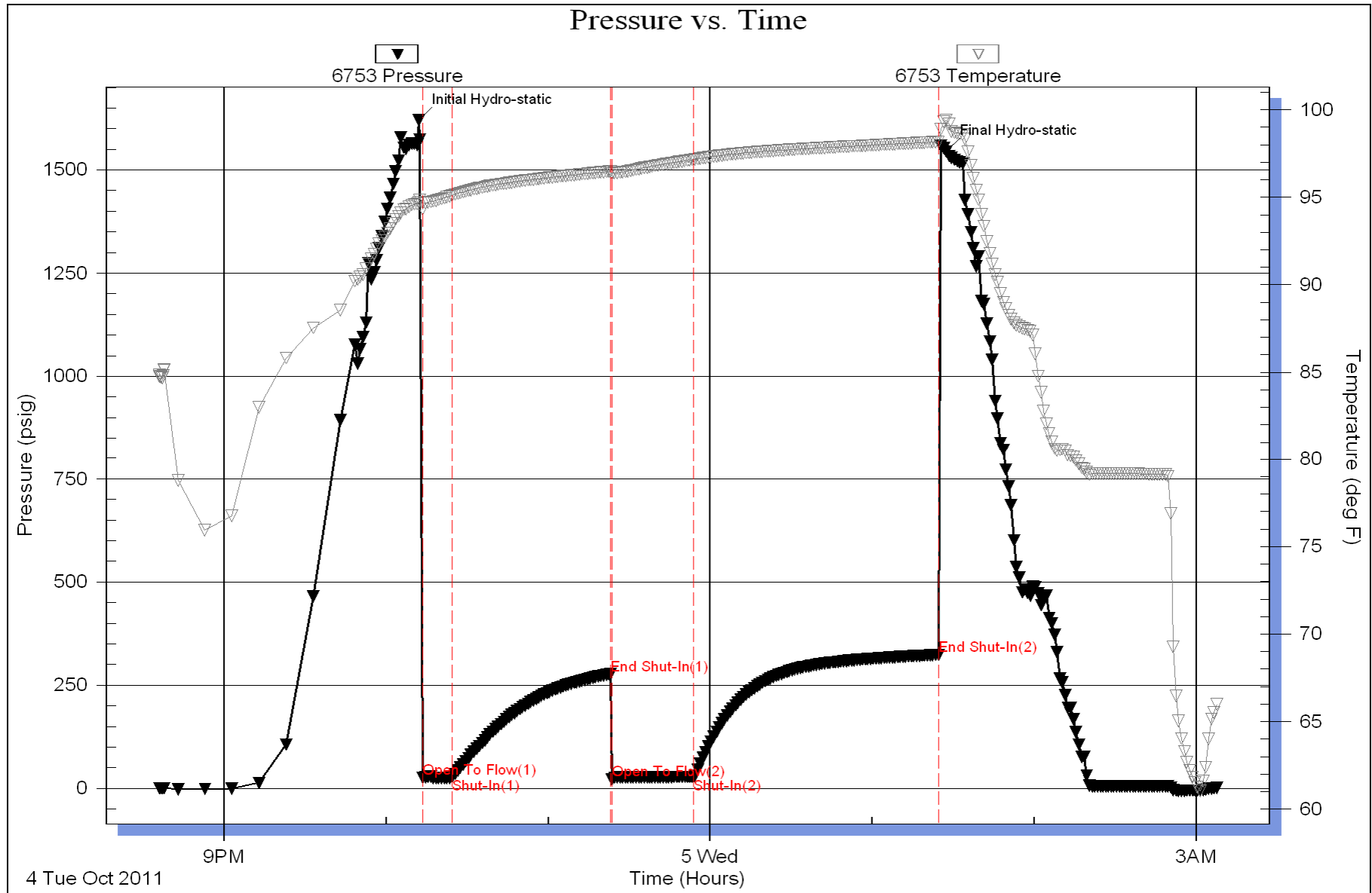
Num Gas Bombs: 0

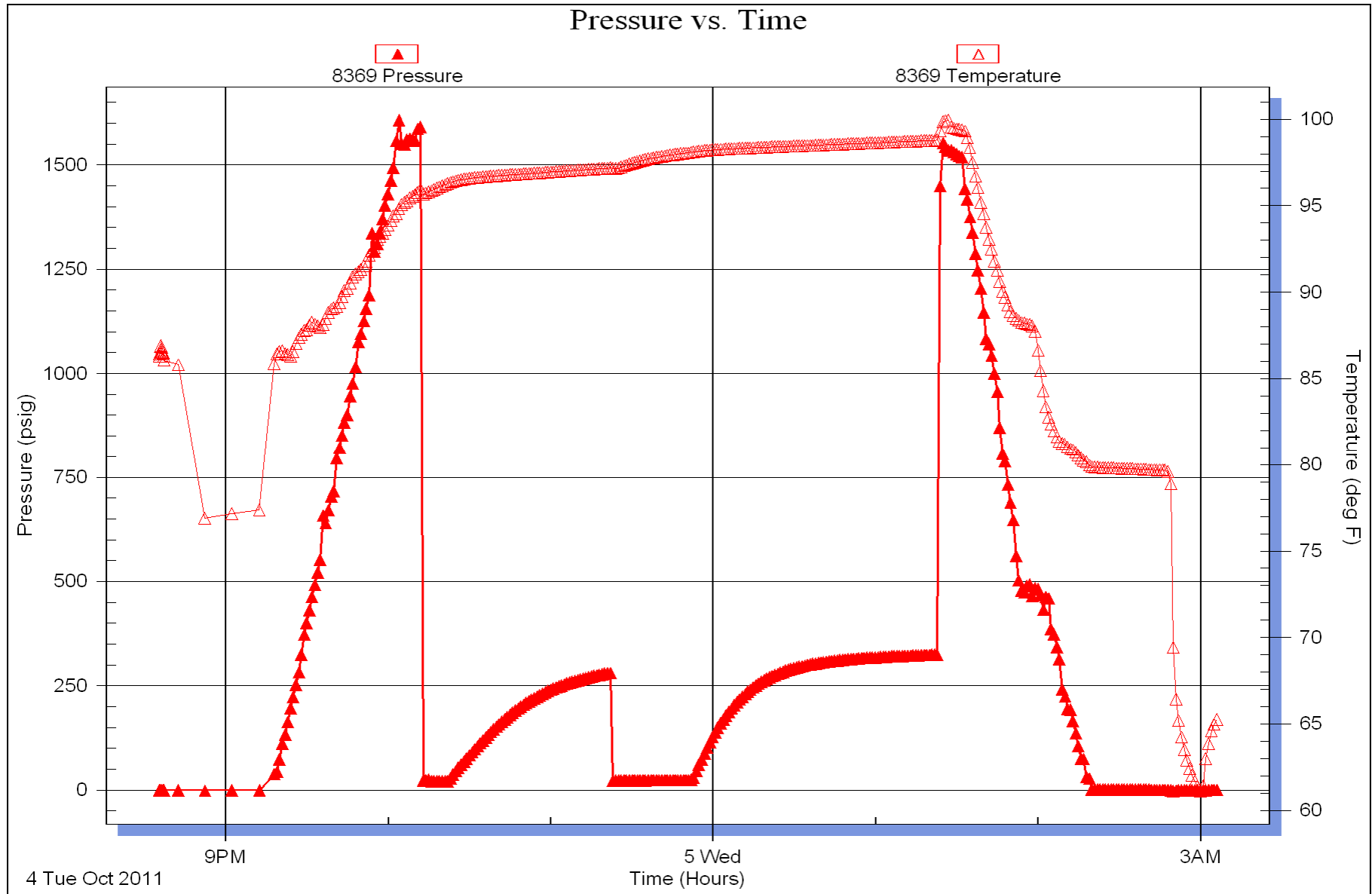
Serial #:

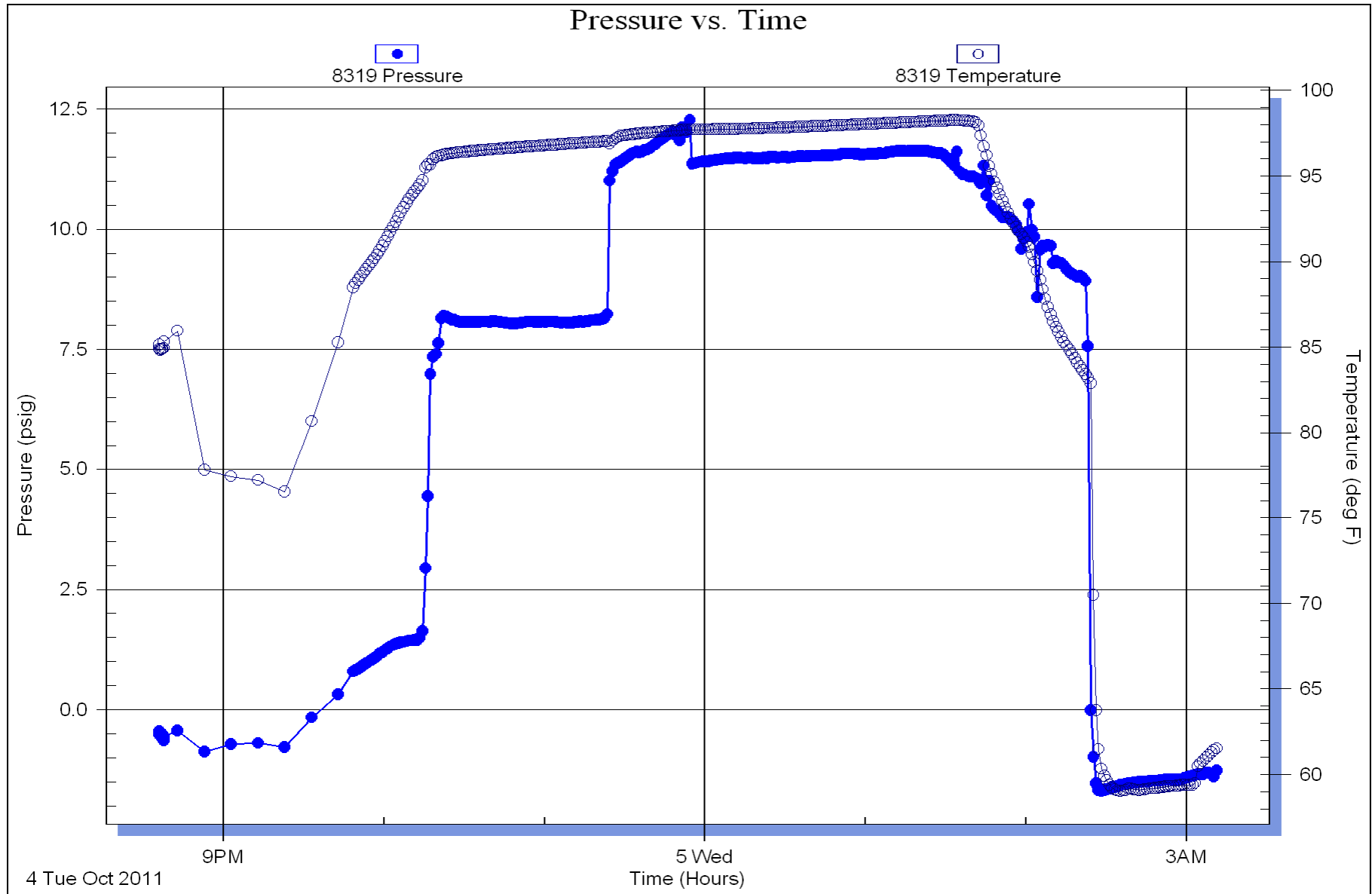
Laboratory Name:

Laboratory Location:

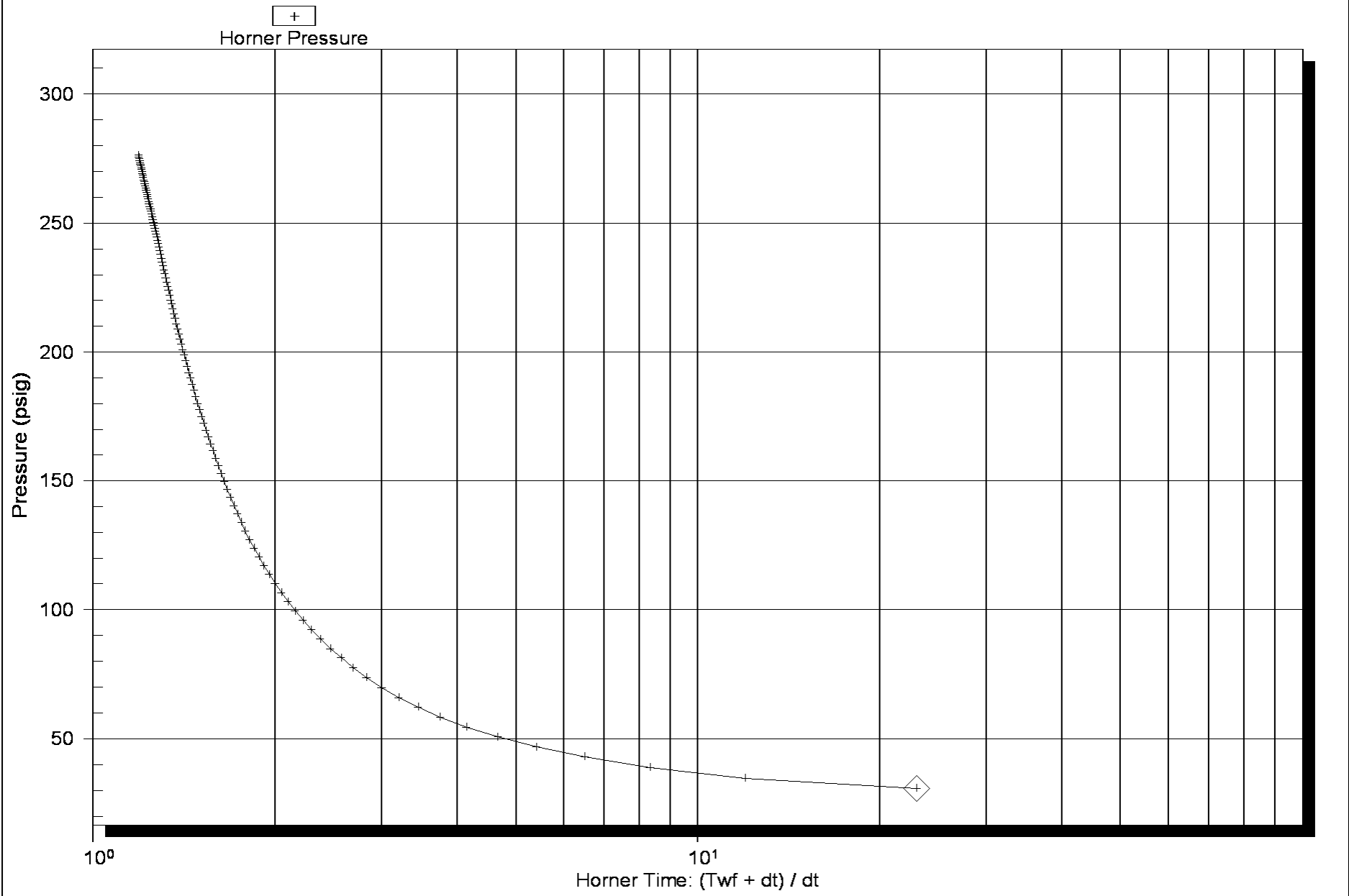
Recovery Comments: Sampler Data 2500ml Gas 500ml Mud 300psi



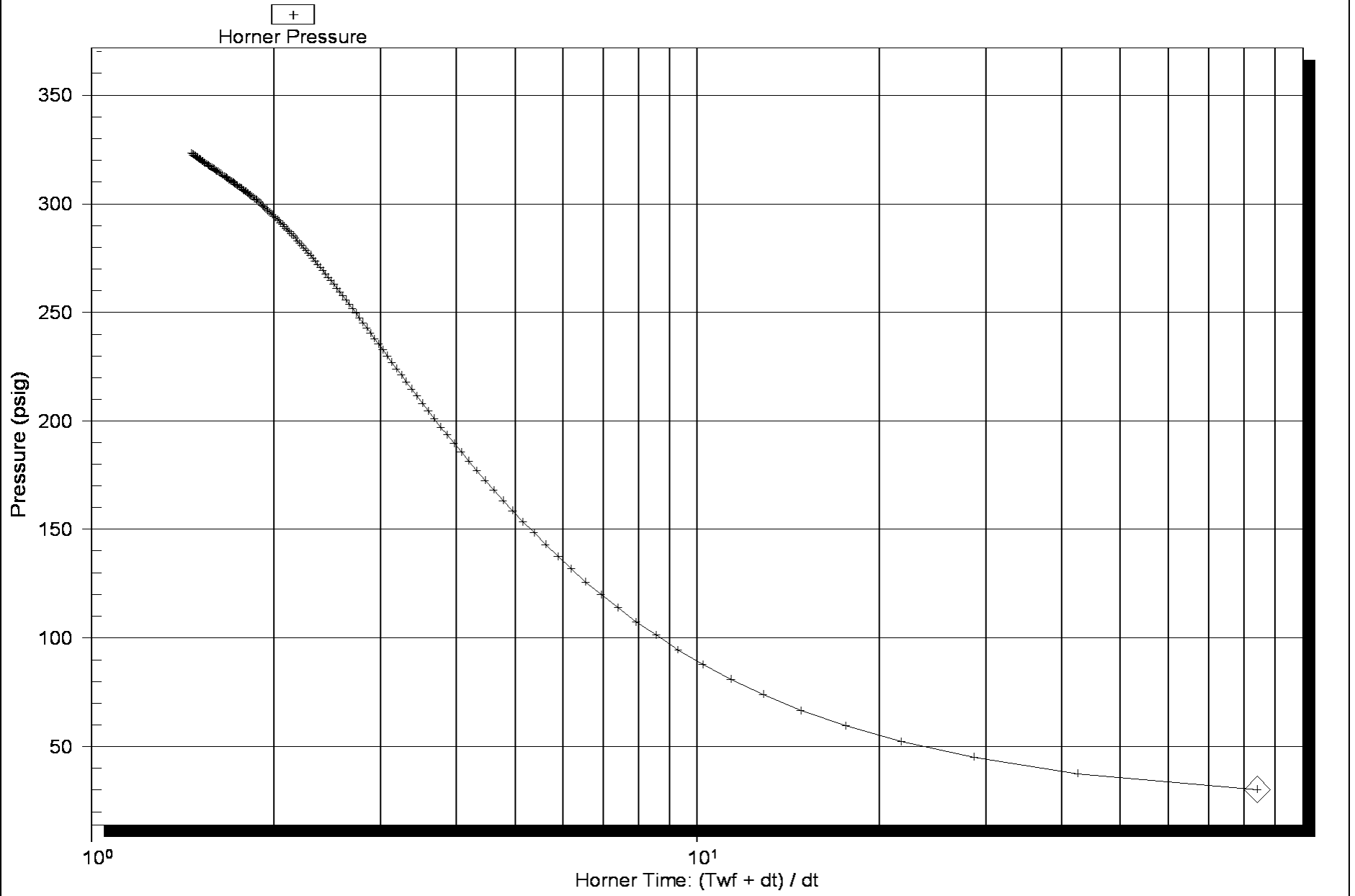




Horner Plot



Horner Plot



Serial Number: 6753 (Inside)

P* :

Slope (m) : kpa/log cycle

Flow Cycle: 2

