



DRILL STEM TEST REPORT

Prepared For: **Captiva 11**

2717 Canal Blvd Hays
Ks 67601

ATTN: Charlie Sturdarant

7-22s-16w Pawnee

Charlie Sturdarant

Start Date: 2011.07.03 @ 09:35:00

End Date: 2011.07.03 @ 17:20:00

Job Ticket #: 16504 DST #: 3

Superior Testers Enterprises LLC
PO Box 138 Great Bend KS 67530
1-800-792-6902

Printed: 2011.07.03 @ 18:02:39

Captiva 11
Charlie Sturdarant
7-22s-16w Pawnee
DST # 3
Arbuckle
2011.07.03



DRILL STEM TEST REPORT

Captiva 11
 2717 Canal Blvd Hays
 Ks 67601
 ATTN: Charlie Sturdarant

Charlie Sturdarant
7-22s-16w Pawnee
 Job Ticket: 16504 **DST#: 3**
 Test Start: 2011.07.03 @ 09:35:00

GENERAL INFORMATION:

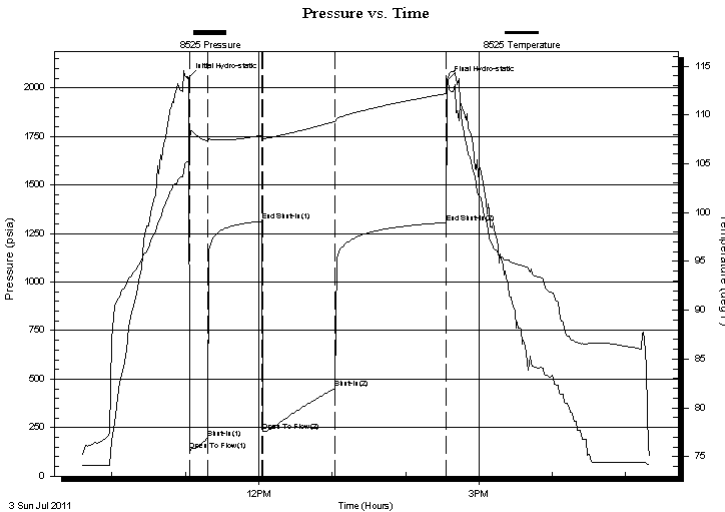
Formation: **Arbuckle**
 Deviated: No Whipstock: ft (KB)
 Test Type: Bottom Hole (Initial)
 Time Tool Opened: 11:03:30 Tester: Dustin Ellis/Jared
 Time Test Ended: 17:20:00 Unit No: 3332 GB-62
 Interval: **3906.00 ft (KB) To 3917.00 ft (KB) (TVD)** Reference Elevations: 2021.00 ft (KB)
 Total Depth: 3917.00 ft (KB) (TVD) 2010.00 ft (CF)
 Hole Diameter: 7.88 inches Hole Condition: Fair KB to GR/CF: 11.00 ft

Serial #: 8525

Press @ Run Depth: 452.20 psia @ ft (KB) Capacity: 5000.00 psia
 Start Date: 2011.07.03 End Date: 2011.07.03 Last Calib.: 2011.07.03
 Start Time: 09:35:00 End Time: 17:20:00 Time On Btm: 2011.07.03 @ 11:02:30
 Time Off Btm: 2011.07.03 @ 14:34:00

TEST COMMENT: 1st open 15 minutes Strong blow bottom bucket 2 minutes
 1st shut in 45 minutes Blow back
 2nd open 60 minutes Strong blow bottom bucket 3 minutes
 2nd shut in 90 minutes Blow back

PRESSURE SUMMARY



Time (Min.)	Pressure (psia)	Temp (deg F)	Annotation
0	2052.76	105.23	Initial Hydro-static
1	130.95	107.36	Open To Flow (1)
16	197.93	107.30	Shut-In(1)
60	1312.78	107.92	End Shut-In(1)
61	229.42	107.61	Open To Flow (2)
120	452.20	109.34	Shut-In(2)
211	1305.93	112.18	End Shut-In(2)
212	2035.05	113.58	Final Hydro-static

Recovery

Length (ft)	Description	Volume (bbl)
280.00	oily cut gas gas 40% oil 60%	1.86
220.00	oily cut gas and mud	3.09
0.00	gas 20% oil 70% mud 10%	0.00
500.00	oil 100%	7.01
0.00	2760 gas in pipe	0.00

Gas Rates

Choke (inches)	Pressure (psia)	Gas Rate (Mcf/d)
----------------	-----------------	------------------



DRILL STEM TEST REPORT

Captiva 11
 2717 Canal Blvd Hays
 Ks 67601
 ATTN: Charlie Sturdarant

Charlie Sturdarant
7-22s-16w Pawnee
 Job Ticket: 16504 **DST#: 3**
 Test Start: 2011.07.03 @ 09:35:00

GENERAL INFORMATION:

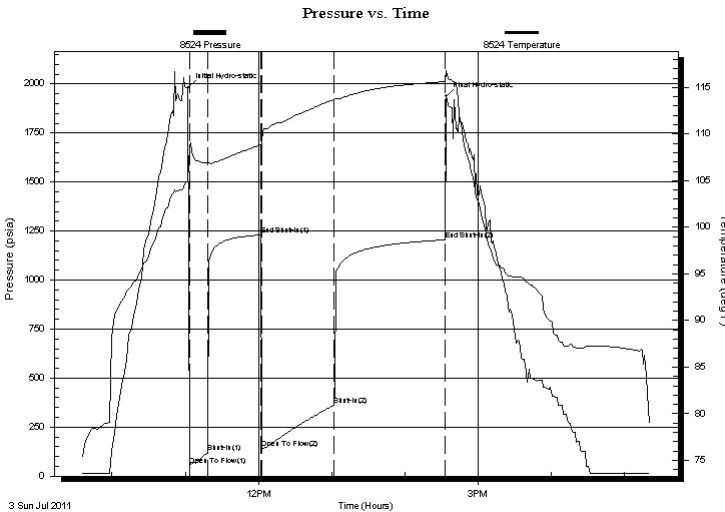
Formation: **Arbuckle**
 Deviated: No Whipstock: ft (KB)
 Test Type: Bottom Hole (Initial)
 Time Tool Opened: 11:03:30 Tester: Dustin Ellis/Jared
 Time Test Ended: 17:20:00 Unit No: 3332 GB-62
 Interval: **3906.00 ft (KB) To 3917.00 ft (KB) (TVD)** Reference Elevations: 2021.00 ft (KB)
 Total Depth: 3917.00 ft (KB) (TVD) 2010.00 ft (CF)
 Hole Diameter: 7.88 inches Hole Condition: Fair KB to GR/CF: 11.00 ft

Serial #: 8524

Press @ Run Depth: 1205.02 psia @ ft (KB) Capacity: 5000.00 psia
 Start Date: 2011.07.03 End Date: 2011.07.03 Last Calib.: 2011.07.03
 Start Time: 09:35:00 End Time: 17:20:30 Time On Btm: 2011.07.03 @ 11:02:30
 Time Off Btm: 2011.07.03 @ 14:34:00

TEST COMMENT: 1st open 15 minutes Strong blow bottom bucket 2 minutes
 1st shut in 45 minutes Blow back
 2nd open 60 minutes Strong blow bottom bucket 3 minutes
 2nd shut in 90 minutes Blow back

PRESSURE SUMMARY



Time (Min.)	Pressure (psia)	Temp (deg F)	Annotation
0	1979.20	104.99	Initial Hydro-static
1	53.82	108.68	Open To Flow (1)
16	122.67	106.86	Shut-In(1)
60	1230.48	108.84	End Shut-In(1)
61	144.26	109.44	Open To Flow (2)
120	362.37	113.71	Shut-In(2)
211	1205.02	115.63	End Shut-In(2)
212	1936.04	116.83	Final Hydro-static

Recovery

Length (ft)	Description	Volume (bbl)
280.00	oily cut gas gas 40% oil 60%	1.86
220.00	oily cut gas and mud	3.09
0.00	gas 20% oil 70% mud 10%	0.00
500.00	oil 100%	7.01
0.00	2760 gas in pipe	0.00

Gas Rates

Choke (inches)	Pressure (psia)	Gas Rate (Mcf/d)



DRILL STEM TEST REPORT

TOOL DIAGRAM

Captiva 11
 2717 Canal Blvd Hays
 Ks 67601
 ATTN: Charlie Sturdarant

Charlie Sturdarant
7-22s-16w Pawnee
 Job Ticket: 16504 **DST#: 3**
 Test Start: 2011.07.03 @ 09:35:00

Tool Information

Drill Pipe:	Length: 3660.00 ft	Diameter: 3.80 inches	Volume: 51.34 bbl	Tool Weight:	2000.00 lb
Heavy Wt. Pipe:	Length: 0.00 ft	Diameter: 0.00 inches	Volume: 0.00 bbl	Weight set on Packer:	20000.00 lb
Drill Collar:	Length: 226.69 ft	Diameter: 2.25 inches	Volume: 1.11 bbl	Weight to Pull Loose:	70000.00 lb
			<u>Total Volume: 52.45 bbl</u>	Tool Chased	0.00 ft
Drill Pipe Above KB:	8.69 ft			String Weight: Initial	68000.00 lb
Depth to Top Packer:	3906.00 ft			Final	70000.00 lb
Depth to Bottom Packer:	ft				
Interval between Packers:	11.00 ft				
Tool Length:	39.00 ft				
Number of Packers:	2	Diameter: 6.25 inches			

Tool Comments: Gas to surface gravity oil 46

Tool Description	Length (ft)	Serial No.	Position	Depth (ft)	Accum. Lengths
SHut-InTool	5.00		Inside	3883.00	
Hydraulic Tool	5.00			3888.00	
Jars	6.00			3894.00	
Safety Joint	2.00			3896.00	
Packer	5.00			3901.00	28.00 Bottom Of Top Packer
Packer	5.00			3906.00	
Anchor	6.00			3912.00	
Recorder	1.00	8524	Inside	3913.00	
Recorder	1.00	8525	Outside	3914.00	
Bullnose	3.00			3917.00	11.00 Bottom Packers & Anchor
Total Tool Length:	39.00				



DRILL STEM TEST REPORT

FLUID SUMMARY

Captiva 11
 2717 Canal Blvd Hays
 Ks 67601
 ATTN: Charlie Sturdarant

Charlie Sturdarant
7-22s-16w Pawnee
 Job Ticket: 16504 **DST#: 3**
 Test Start: 2011.07.03 @ 09:35:00

Mud and Cushion Information

Mud Type: Gel Chem	Cushion Type:	Oil API:	deg API
Mud Weight: 9.00 lb/gal	Cushion Length: ft	Water Salinity:	ppm
Viscosity: 68.00 sec/qt	Cushion Volume: bbl		
Water Loss: 8.00 in ³	Gas Cushion Type:		
Resistivity: ohm.m	Gas Cushion Pressure: psia		
Salinity: 6800.00 ppm			
Filter Cake: 1.00 inches			

Recovery Information

Recovery Table

Length ft	Description	Volume bbl
280.00	oily cut gas gas 40% oil 60%	1.863
220.00	oily cut gas and mud	3.086
0.00	gas20%oil70%mud10%	0.000
500.00	oil 100%	7.014
0.00	2760 gas in pipe	0.000

Total Length: 1000.00 ft Total Volume: 11.963 bbl

Num Fluid Samples: 0 Num Gas Bombs: 0 Serial #:

Laboratory Name: Laboratory Location:

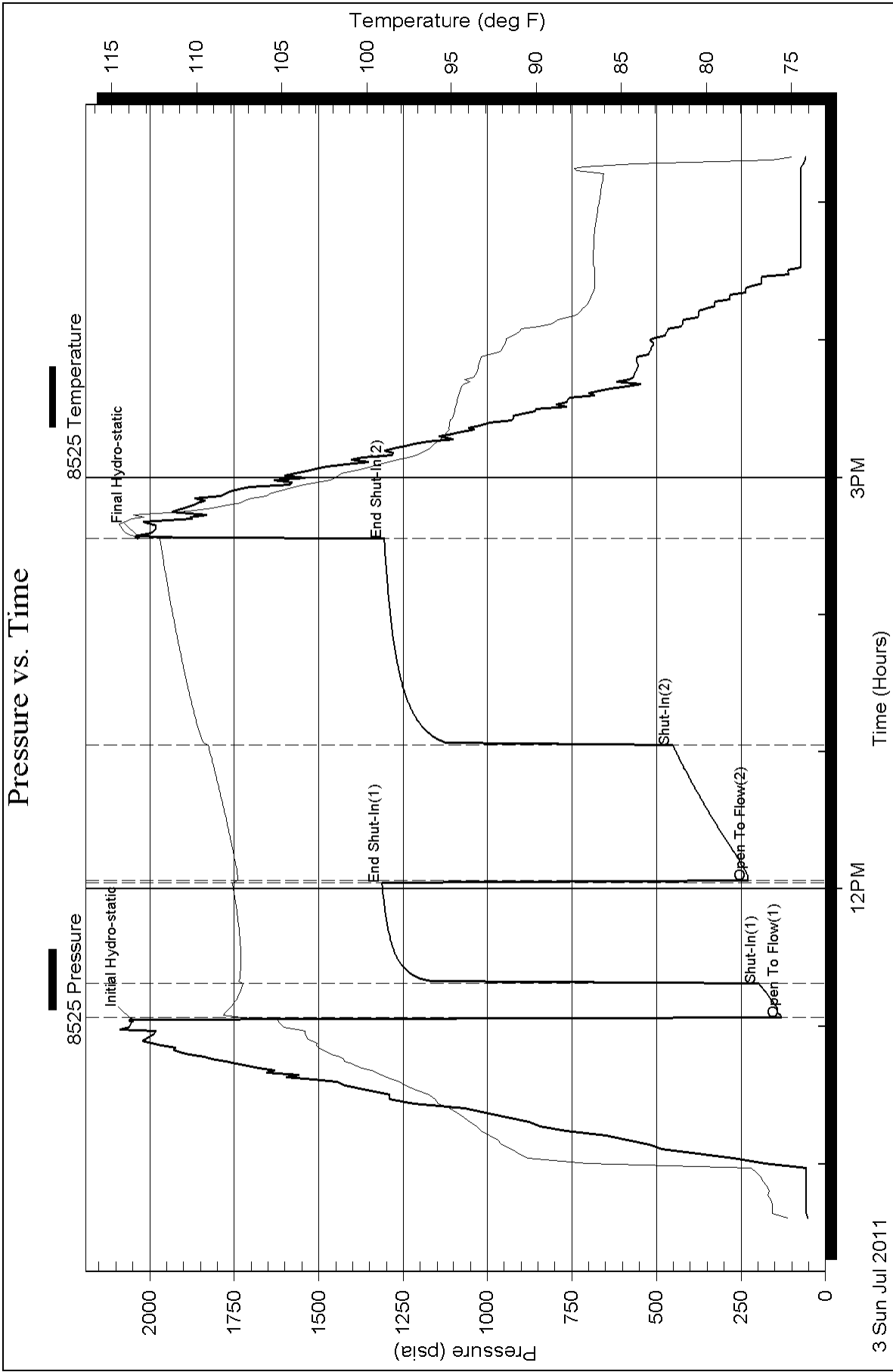
Recovery Comments: Gas to surface gravity oil 46

Serial #: 8525

Captiva 11

7-22s-16w Paw nee

DST Test Number: 3



Superior Testers Enterprises LLC

Ref. No: 16504

Printed: 2011.07.03 @ 18:02:39

Serial #: 8524

Captiva 11

7-22s-16w Pawnee

DST Test Number: 3

