



**TRILOBITE
TESTING, INC.**

DRILL STEM TEST REPORT

Berexco LLC
2020 N Bramblewood
Wichita Ks 67206
ATTN: Ed Grieves

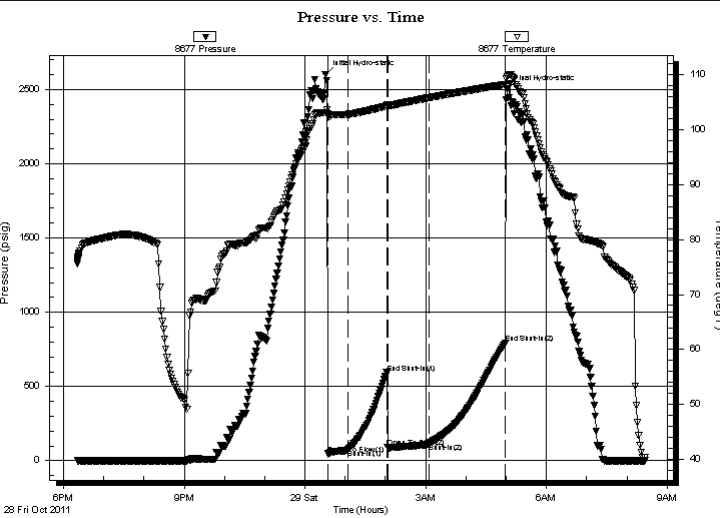
33/29s22w
Marcia 1-33
Job Ticket: 42305 **DST#: 1**
Test Start: 2011.10.28 @ 18:20:53

GENERAL INFORMATION:

Formation: **Morrow Sand**
Deviated: No Whipstock: ft (KB)
Time Tool Opened: 00:33:53
Time Test Ended: 08:26:23
Interval: **5270.00 ft (KB) To 5340.00 ft (KB) (TVD)**
Total Depth: 5340.00 ft (KB) (TVD)
Hole Diameter: 7.78 inches Hole Condition: Good
Test Type: Conventional Bottom Hole (Initial)
Tester: Mike Slemp
Unit No: 53
Reference Elevations: 2446.00 ft (KB)
2434.00 ft (CF)
KB to GR/CF: 12.00 ft

Serial #: 8677 Inside
Press @ Run Depth: 118.40 psig @ 5272.00 ft (KB) Capacity: 8000.00 psig
Start Date: 2011.10.28 End Date: 2011.10.29 Last Calib.: 2011.10.29
Start Time: 18:20:54 End Time: 08:26:23 Time On Btm: 2011.10.29 @ 00:30:23
Time Off Btm: 2011.10.29 @ 05:01:38

TEST COMMENT: IF- Weak blow 3 inches in 30 min
IS- No blow back
FF- Weak Blow 3 inches in 60 min
FS- No blow back



PRESSURE SUMMARY

Time (Min.)	Pressure (psig)	Temp (deg F)	Annotation
0	2601.87	103.13	Initial Hydro-static
4	46.77	102.79	Open To Flow (1)
34	77.25	102.78	Shut-In(1)
91	592.88	104.29	End Shut-In(1)
93	90.00	104.46	Open To Flow (2)
155	118.40	105.80	Shut-In(2)
268	790.42	108.21	End Shut-In(2)
272	2502.49	109.68	Final Hydro-static

Recovery

Length (ft)	Description	Volume (bbl)
300.00	100% mud	1.48

Gas Rates

Choke (inches)	Pressure (psig)	Gas Rate (Mcf/d)



**TRILOBITE
TESTING, INC.**

DRILL STEM TEST REPORT

FLUID SUMMARY

Berexco LLC

33/29s22w

2020 N Bramblewood
Wichita Ks 67206

Marcia 1-33

Job Ticket: 42305

DST#: 1

ATTN: Ed Grieves

Test Start: 2011.10.28 @ 18:20:53

Mud and Cushion Information

Mud Type: Gel Chem

Cushion Type:

Oil API:

deg API

Mud Weight: 9.00 lb/gal

Cushion Length:

ft

Water Salinity:

ppm

Viscosity: 50.00 sec/qt

Cushion Volume:

bbbl

Water Loss: 16.38 in³

Gas Cushion Type:

Resistivity: ohm.m

Gas Cushion Pressure:

psig

Salinity: 15200.00 ppm

Filter Cake: inches

Recovery Information

Recovery Table

Length ft	Description	Volume bbl
300.00	100% mud	1.475

Total Length: 300.00 ft Total Volume: 1.475 bbl

Num Fluid Samples: 0

Num Gas Bombs: 0

Serial #:

Laboratory Name:

Laboratory Location:

Recovery Comments:

Pressure vs. Time

