



**TRILOBITE  
TESTING, INC**

# DRILL STEM TEST REPORT

Berexco LLC  
2020 N Bramblewood  
Wichita Ks 67206  
ATTN: Ed Grieves

**33/29s22w**  
**Marcia 1-33**  
Job Ticket: 42306      **DST#: 2**  
Test Start: 2011.10.30 @ 07:35:28

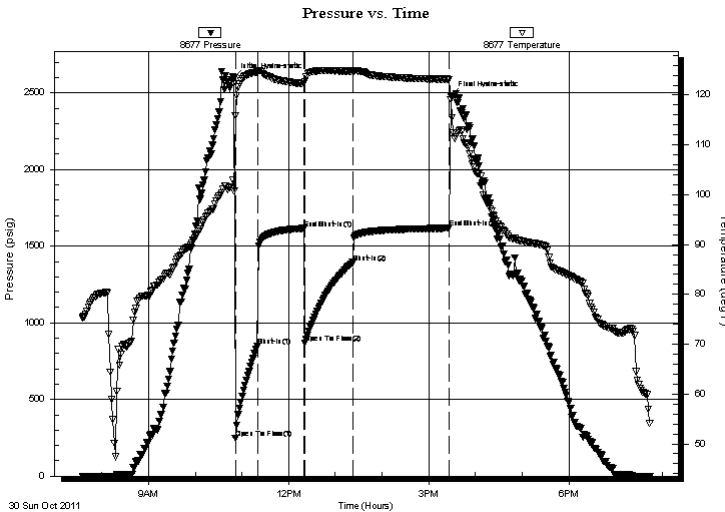
## GENERAL INFORMATION:

Formation: **Morrow Sand**  
Deviated: No Whipstock: ft (KB)  
Time Tool Opened: 10:51:43  
Time Test Ended: 19:44:58  
Interval: **5351.00 ft (KB) To 5375.00 ft (KB) (TVD)**  
Total Depth: 5375.00 ft (KB) (TVD)  
Hole Diameter: 7.78 inches Hole Condition: Good  
Test Type: Conventional Bottom Hole (Initial)  
Tester: Mike Slemp  
Unit No: 53  
Reference Elevations: 2446.00 ft (KB)  
2434.00 ft (CF)  
KB to GR/CF: 12.00 ft

**Serial #: 8677      Inside**  
Press @ Run Depth: 1393.29 psig @ 5353.00 ft (KB)      Capacity: 8000.00 psig  
Start Date: 2011.10.30      End Date: 2011.10.30      Last Calib.: 2011.10.30  
Start Time: 07:35:29      End Time: 19:44:58      Time On Btm: 2011.10.30 @ 10:49:58  
Time Off Btm: 2011.10.30 @ 15:28:13

**TEST COMMENT:** IF- BOB in 1.5 min  
IS- Surface blow back  
FF- BOB in 3 min  
FS- Surface blow back

## PRESSURE SUMMARY



Time (Min.)	Pressure (psig)	Temp (deg F)	Annotation
0	2597.12	100.82	Initial Hydro-static
2	246.04	115.92	Open To Flow (1)
30	850.50	124.62	Shut-In(1)
90	1616.09	122.26	End Shut-In(1)
91	867.44	122.65	Open To Flow (2)
153	1393.29	124.77	Shut-In(2)
277	1618.14	123.17	End Shut-In(2)
279	2483.34	119.11	Final Hydro-static

## Recovery

Length (ft)	Description	Volume (bbl)
2800.00	water 100%	33.53

## Gas Rates

Choke (inches)	Pressure (psig)	Gas Rate (Mcf/d)



**TRILOBITE  
TESTING, INC**

# DRILL STEM TEST REPORT

**FLUID SUMMARY**

Berexco LLC

**33/29s22w**

2020 N Bramblewood  
Wichita Ks 67206

**Marcia 1-33**

Job Ticket: 42306

**DST#: 2**

ATTN: Ed Grieves

Test Start: 2011.10.30 @ 07:35:28

## Mud and Cushion Information

Mud Type: Gel Chem

Cushion Type:

Oil API:

deg API

Mud Weight: 9.00 lb/gal

Cushion Length:

ft

Water Salinity:

70000 ppm

Viscosity: 56.00 sec/qt

Cushion Volume:

bbbl

Water Loss: 7.60 in<sup>3</sup>

Gas Cushion Type:

Resistivity: ohm.m

Gas Cushion Pressure:

psig

Salinity: 14000.00 ppm

Filter Cake: inches

## Recovery Information

Recovery Table

Length ft	Description	Volume bbl
2800.00	water100%	33.529

Total Length: 2800.00 ft      Total Volume: 33.529 bbl

Num Fluid Samples: 0

Num Gas Bombs: 0

Serial #:

Laboratory Name:

Laboratory Location:

Recovery Comments:

Serial #: 8677

Inside

Berexco LLC

Marcia 1-33

DST Test Number: 2

