



TRILOBITE TESTING, INC.

DRILL STEM TEST REPORT

Shakespeare Oil Co. inc.

14-14-32 Logan

202 W. Main
Salem IL. 62881

Ottley 5-14

Job Ticket: 44276

DST#: 1

ATTN: Tim Priest

Test Start: 2011.11.24 @ 03:53:05

GENERAL INFORMATION:

Formation: **LKC"H-I"**

Deviated: No Whipstock: ft (KB)

Time Tool Opened: 06:18:30

Time Test Ended: 12:17:09

Test Type: Conventional Bottom Hole (Initial)

Tester: Andy Carreira

Unit No: 39

Interval: 3988.00 ft (KB) To 4054.00 ft (KB) (TVD)

Reference Elevations: 2825.00 ft (KB)

Total Depth: 4054.00 ft (KB) (TVD)

2816.00 ft (CF)

Hole Diameter: 7.88 inches Hole Condition: Fair

KB to GR/CF: 9.00 ft

Serial #: 8352 Outside

Press @ Run Depth: 41.27 psig @ 3995.00 ft (KB)

Capacity: 8000.00 psig

Start Date: 2011.11.24

End Date:

2011.11.24

Last Calib.:

2011.11.24

Start Time:

03:53:05

End Time:

12:17:10

Time On Btm:

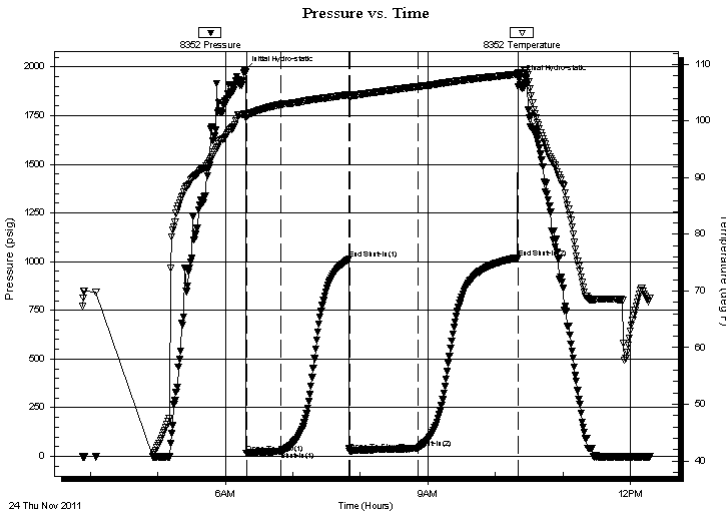
2011.11.24 @ 06:17:10

Time Off Btm:

2011.11.24 @ 10:21:09

TEST COMMENT: IF:(30min) Slow build to 3 inches
ISl:(60min) No Return
FF:(60min) Slow build to 5 inches
FSl:(90min) No Return

PRESSURE SUMMARY



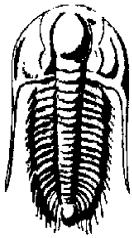
Time (Min.)	Pressure (psig)	Temp (deg F)	Annotation
0	1982.00	101.26	Initial Hydro-static
2	16.62	100.55	Open To Flow (1)
33	25.87	102.97	Shut-In(1)
93	1012.26	104.69	End Shut-In(1)
94	27.18	104.42	Open To Flow (2)
154	41.27	106.09	Shut-In(2)
243	1020.39	108.29	End Shut-In(2)
244	1936.14	108.38	Final Hydro-static

Recovery

Length (ft)	Description	Volume (bbl)
65.00	GMCO g=20% m=35% o=45%	0.32

Gas Rates

Choke (inches)	Pressure (psig)	Gas Rate (Mcf/d)



TRILOBITE TESTING, INC.

DRILL STEM TEST REPORT

Shakespeare Oil Co. inc.
202 W. Main
Salem IL. 62881

ATTN: Tim Priest

14-14-32 Logan
Ottley 5-14
Job Ticket: 44276 **DST#: 1**
Test Start: 2011.11.24 @ 03:53:05

GENERAL INFORMATION:

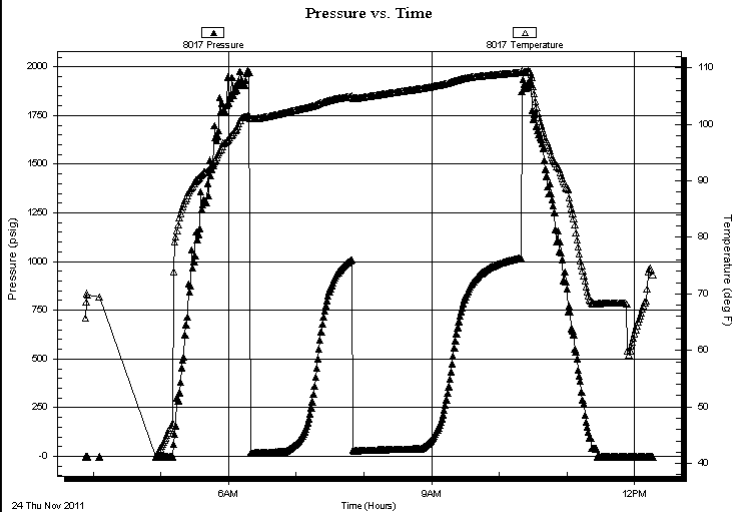
Formation: **LKC"H-I"**
Deviated: No Whipstock: ft (KB) Test Type: Conventional Bottom Hole (Initial)
Time Tool Opened: 06:18:30 Tester: Andy Carreira
Time Test Ended: 12:17:09 Unit No: 39

Interval: **3988.00 ft (KB) To 4054.00 ft (KB) (TVD)** Reference Elevations: 2825.00 ft (KB)
Total Depth: 4054.00 ft (KB) (TVD) 2816.00 ft (CF)
Hole Diameter: 7.88 inches Hole Condition: Fair KB to GR/CF: 9.00 ft

Serial #: 8017 Inside

Press @RunDepth:	psig @ 3995.00 ft (KB)	Capacity:	8000.00 psig
Start Date:	2011.11.24 End Date: 2011.11.24	Last Calib.:	2011.11.24
Start Time:	03:53:05 End Time: 12:16:59	Time On Btm:	
		Time Off Btm:	

TEST COMMENT: IF:(30min) Slow build to 3 inches
IS:(60min) No Return
FF:(60min) Slow build to 5 inches
FS:(90min) No Return



PRESSURE SUMMARY

Time (Min.)	Pressure (psig)	Temp (deg F)	Annotation

Recovery

Length (ft)	Description	Volume (bbl)
65.00	GMCO g=20% m=35% o=45%	0.32

Gas Rates

Choke (inches)	Pressure (psig)	Gas Rate (Mcf/d)



**TRILOBITE
TESTING, INC.**

DRILL STEM TEST REPORT

FLUID SUMMARY

Shakespeare Oil Co. inc.

14-14-32 Logan

202 W. Main
Salem IL. 62881

Ottley 5-14

Job Ticket: 44276

DST#: 1

ATTN: Tim Priest

Test Start: 2011.11.24 @ 03:53:05

Mud and Cushion Information

Mud Type: Gel Chem

Cushion Type:

Oil API:

deg API

Mud Weight: 9.00 lb/gal

Cushion Length:

ft

Water Salinity:

ppm

Viscosity: 57.00 sec/qt

Cushion Volume:

bbbl

Water Loss: 8.77 in³

Gas Cushion Type:

Resistivity: ohm.m

Gas Cushion Pressure:

psig

Salinity: 2800.00 ppm

Filter Cake: inches

Recovery Information

Recovery Table

Length ft	Description	Volume bbl
65.00	GMCO g=20% m=35% o=45%	0.320

Total Length: 65.00 ft Total Volume: 0.320 bbl

Num Fluid Samples: 0

Num Gas Bombs: 0

Serial #:

Laboratory Name:

Laboratory Location:

Recovery Comments:

Pressure vs. Time

