



**TRILOBITE  
TESTING, INC.**

# DRILL STEM TEST REPORT

Shakespeare Oil Co. inc.

**14-14-32 Logan**

202 W. Main  
Salem IL. 62881

**Ottley 5-14**

Job Ticket: 44576

**DST#: 2**

ATTN: Tim Priest

Test Start: 2011.11.25 @ 02:43:05

## GENERAL INFORMATION:

Formation: **LKC"L"**

Deviated: No Whipstock: ft (KB)

Time Tool Opened: 05:21:50

Time Test Ended: 09:30:09

Test Type: Conventional Bottom Hole (Reset)

Tester: Andy Carreira

Unit No: 39

**Interval: 4108.00 ft (KB) To 4147.00 ft (KB) (TVD)**

Total Depth: 4147.00 ft (KB) (TVD)

Hole Diameter: 7.88 inches Hole Condition: Fair

Reference Elevations: 2825.00 ft (KB)

2816.00 ft (CF)

KB to GR/CF: 9.00 ft

**Serial #: 8352 Outside**

Press @ Run Depth: 30.40 psig @ 4113.00 ft (KB)

Start Date: 2011.11.25

End Date:

2011.11.25

Start Time: 02:43:05

End Time:

09:30:10

Capacity: 8000.00 psig

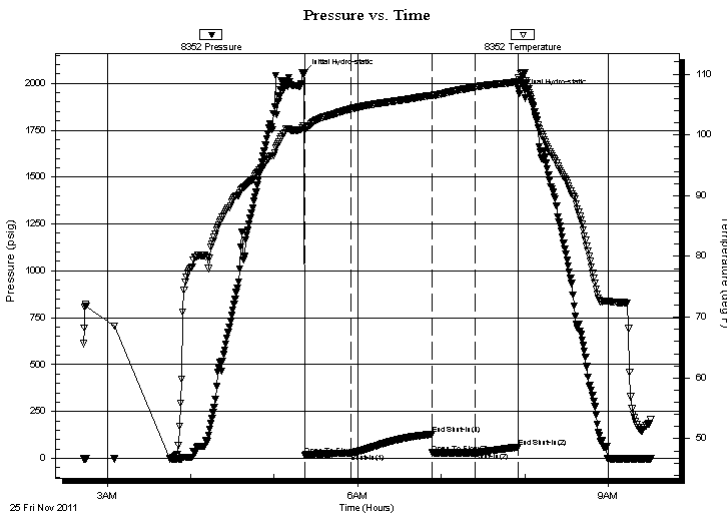
Last Calib.: 2011.11.25

Time On Btm: 2011.11.25 @ 05:21:30

Time Off Btm: 2011.11.25 @ 07:55:59

**TEST COMMENT:** IF:(30min) Weak, 1 inch blow  
ISl:(60min) No Return  
FF:(30min) No Blow  
FSl:(30min) No Return

## PRESSURE SUMMARY



Time (Min.)	Pressure (psig)	Temp (deg F)	Annotation
0	2054.37	101.49	Initial Hydro-static
1	16.32	100.79	Open To Flow (1)
34	26.77	104.26	Shut-In(1)
92	129.13	106.51	End Shut-In(1)
92	28.89	106.47	Open To Flow (2)
123	30.40	107.89	Shut-In(2)
154	60.32	108.73	End Shut-In(2)
155	1946.00	109.13	Final Hydro-static

## Recovery

Length (ft)	Description	Volume (bbl)
20.00	Mud w / oil specks in tool	0.10

\* Recovery from multiple tests

## Gas Rates

Choke (inches)	Pressure (psig)	Gas Rate (Mcf/d)



**TRILOBITE TESTING, INC.**

## DRILL STEM TEST REPORT

Shakespeare Oil Co. inc.

**14-14-32 Logan**

202 W. Main  
Salem IL. 62881

**Ottley 5-14**

Job Ticket: 44576

**DST#: 2**

ATTN: Tim Priest

Test Start: 2011.11.25 @ 02:43:05

### GENERAL INFORMATION:

Formation: **LKC"L"**

Deviated: No Whipstock: ft (KB)

Time Tool Opened: 05:21:50

Time Test Ended: 09:30:09

Test Type: Conventional Bottom Hole (Reset)

Tester: Andy Carreira

Unit No: 39

**Interval: 4108.00 ft (KB) To 4147.00 ft (KB) (TVD)**

Total Depth: 4147.00 ft (KB) (TVD)

Hole Diameter: 7.88 inches Hole Condition: Fair

Reference Elevations: 2825.00 ft (KB)

2816.00 ft (CF)

KB to GR/CF: 9.00 ft

**Serial #: 8017 Inside**

Press @ RunDepth: psig @ 4113.00 ft (KB)

Start Date: 2011.11.25

End Date:

2011.11.25

Capacity: 8000.00 psig

Last Calib.:

2011.11.25

Start Time:

02:43:05

End Time:

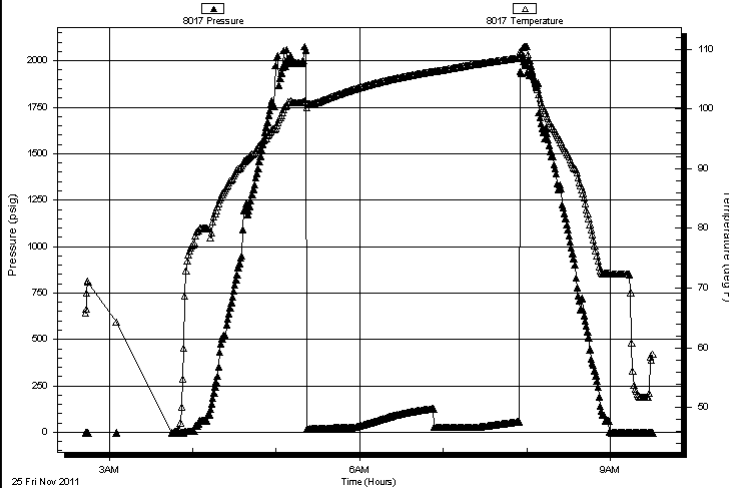
09:30:09

Time On Btm:

Time Off Btm:

**TEST COMMENT:** IF:(30min) Weak, 1 inch blow  
IS:(60min) No Return  
FF:(30min) No Blow  
FS:(30min) No Return

Pressure vs. Time



### PRESSURE SUMMARY

Time (Min.)	Pressure (psig)	Temp (deg F)	Annotation

### Recovery

Length (ft)	Description	Volume (bbl)
20.00	Mud w / oil specks in tool	0.10

### Gas Rates

	Choke (inches)	Pressure (psig)	Gas Rate (Mcf/d)

\* Recovery from multiple tests



**TRILOBITE**  
**TESTING, INC.**

# DRILL STEM TEST REPORT

**FLUID SUMMARY**

Shakespeare Oil Co. inc.

**14-14-32 Logan**

202 W. Main  
Salem IL. 62881

**Ottley 5-14**

Job Ticket: 44576

**DST#: 2**

ATTN: Tim Priest

Test Start: 2011.11.25 @ 02:43:05

## Mud and Cushion Information

Mud Type: Gel Chem

Cushion Type:

Oil API:

deg API

Mud Weight: 9.00 lb/gal

Cushion Length:

ft

Water Salinity:

ppm

Viscosity: 57.00 sec/qt

Cushion Volume:

bbbl

Water Loss: 8.74 in<sup>3</sup>

Gas Cushion Type:

Resistivity: ohm.m

Gas Cushion Pressure:

psig

Salinity: 2800.00 ppm

Filter Cake: inches

## Recovery Information

Recovery Table

Length ft	Description	Volume bbl
20.00	Mud w / oil specks in tool	0.098

Total Length: 20.00 ft      Total Volume: 0.098 bbl

Num Fluid Samples: 0

Num Gas Bombs: 0

Serial #:

Laboratory Name:

Laboratory Location:

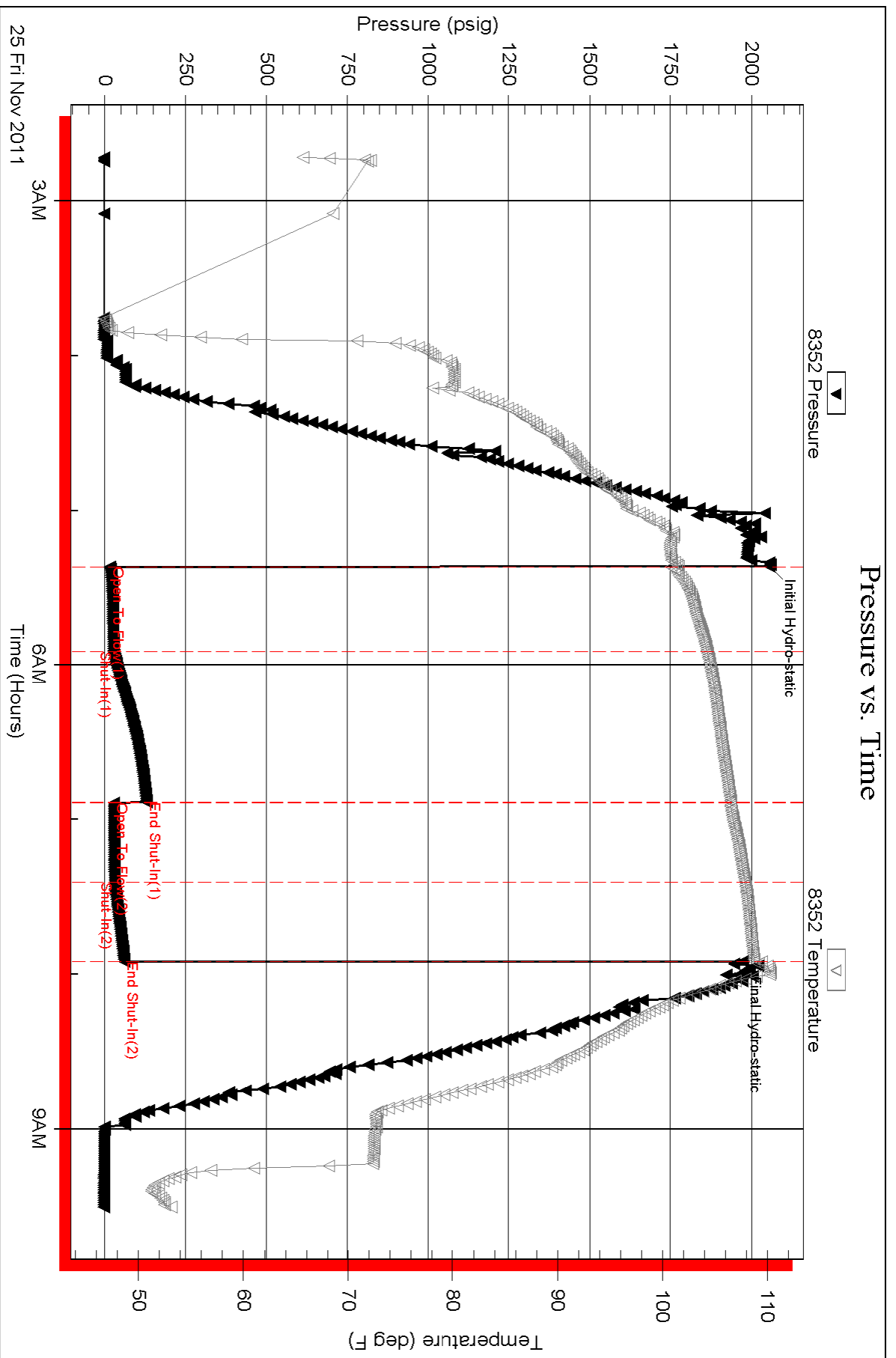
Recovery Comments:

Serial #: 8352

Outside Shakespeare Oil Co. Inc.

Oilley 5-14

DST Test Number: 2



Triobite Testing, Inc

Ref. No: 44576

Printed: 2011.11.25 @ 14:16:47