



## DRILL STEM TEST REPORT

Prepared For: **Downing-Nelson Oil Co Inc**

PO Box 1019  
Hays KS 67601

ATTN: Ron Nelson

### **Pfeifer #1-12**

#### **12-14s-19w Ellis,KS**

Start Date: 2012.01.24 @ 09:56:16

End Date: 2012.01.24 @ 15:51:16

Job Ticket #: 46383                      DST #: 1

Trilobite Testing, Inc

PO Box 362 Hays, KS 67601

ph: 785-625-4778 fax: 785-625-5620

Printed: 2012.02.01 @ 11:39:01

Downing-Nelson Oil Co Inc  
12-14s-19w Ellis,KS  
Pfeifer #1-12  
DST # 1  
LKC-C & D  
2012.01.24



**TRILOBITE  
TESTING, INC.**

# DRILL STEM TEST REPORT

Downing-Nelson Oil Co Inc

**12-14s-19w Ellis, KS**

PO Box 1019  
Hays KS 67601

**Pfeifer #1-12**

Job Ticket: 46383

**DST#: 1**

ATTN: Ron Nelson

Test Start: 2012.01.24 @ 09:56:16

## GENERAL INFORMATION:

Formation: **LKC-C & D**

Deviated: No Whipstock: ft (KB)

Time Tool Opened: 11:51:16

Time Test Ended: 15:51:16

Test Type: Conventional Bottom Hole (Initial)

Tester: Jeff Brown

Unit No: 150

**Interval: 3517.00 ft (KB) To 3572.00 ft (KB) (TVD)**

Reference Elevations: 2211.00 ft (KB)

Total Depth: 3572.00 ft (KB) (TVD)

2203.00 ft (CF)

Hole Diameter: 7.88 inches Hole Condition: Good

KB to GR/CF: 8.00 ft

**Serial #: 8321**

**Inside**

Press @ Run Depth: 85.14 psig @ 3554.00 ft (KB)

Capacity: 8000.00 psig

Start Date: 2012.01.24

End Date:

2012.01.24

Last Calib.:

2012.01.24

Start Time: 09:56:17

End Time:

15:51:16

Time On Btm:

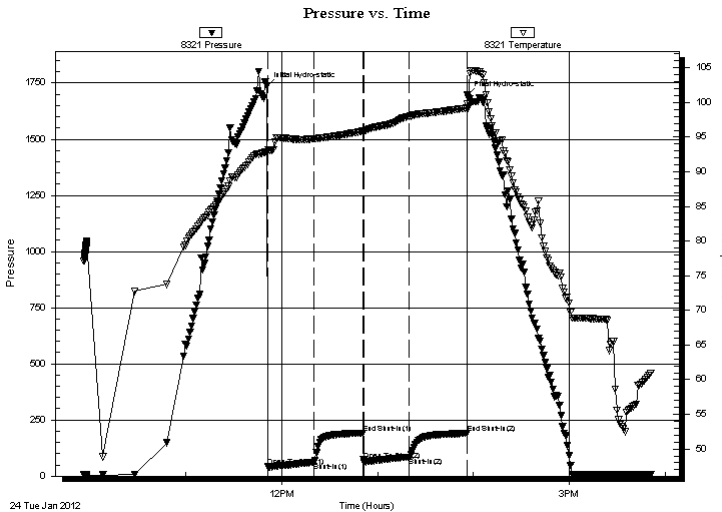
2012.01.24 @ 11:50:46

Time Off Btm:

2012.01.24 @ 13:56:16

**TEST COMMENT:** IFP-Strong blow BOB in 2 1/2 min  
ISI-Dead no blow back  
FFP-Strong blow BOB in 4 min  
FSI-Weak surface blow back

## PRESSURE SUMMARY



Time (Min.)	Pressure (psig)	Temp (deg F)	Annotation
0	1736.10	92.86	Initial Hydro-static
1	44.57	92.87	Open To Flow (1)
30	62.67	94.75	Shut-In(1)
60	192.28	95.85	End Shut-In(1)
61	71.95	95.81	Open To Flow (2)
89	85.14	97.97	Shut-In(2)
125	190.32	99.19	End Shut-In(2)
126	1696.05	99.87	Final Hydro-static

## Recovery

Length (ft)	Description	Volume (bbl)
31.00	GOCWM 35%G 20%O 15%W 30%M	0.43
94.00	GOCM 10%G 20%O 70%M	1.32
0.00	1858-GIP	0.00

## Gas Rates

	Choke (inches)	Pressure (psig)	Gas Rate (Mcf/d)





**TRILOBITE  
TESTING, INC.**

# DRILL STEM TEST REPORT

**TOOL DIAGRAM**

Downing-Nelson Oil Co Inc

**12-14s-19w Ellis,KS**

PO Box 1019  
Hays KS 67601

**Pfeifer #1-12**

Job Ticket: 46383

**DST#: 1**

ATTN: Ron Nelson

Test Start: 2012.01.24 @ 09:56:16

## Tool Information

Drill Pipe:	Length: 3517.00 ft	Diameter: 3.80 inches	Volume: 49.33 bbl	Tool Weight: 2000.00 lb
Heavy Wt. Pipe:	Length: 0.00 ft	Diameter: 2.25 inches	Volume: 0.00 bbl	Weight set on Packer: 20000.00 lb
Drill Collar:	Length: 0.00 ft	Diameter: 2.70 inches	Volume: 0.00 bbl	Weight to Pull Loose: 62000.00 lb
			<u>Total Volume: 49.33 bbl</u>	Tool Chased 0.00 ft
Drill Pipe Above KB:	20.00 ft			String Weight: Initial 51000.00 lb
Depth to Top Packer:	3517.00 ft			Final 54000.00 lb
Depth to Bottom Packer:	ft			
Interval between Packers:	55.00 ft			
Tool Length:	75.00 ft			
Number of Packers:	2	Diameter: 6.75 inches		
Tool Comments:				

## Tool Description

Tool Description	Length (ft)	Serial No.	Position	Depth (ft)	Accum. Lengths
Change Over Sub	1.00			3498.00	
Shut In Tool	5.00			3503.00	
Hydraulic tool	5.00			3508.00	
Packer	4.00			3512.00	20.00 Bottom Of Top Packer
Packer	5.00			3517.00	
Stubb	1.00			3518.00	
Perforations	3.00			3521.00	
Change Over Sub	1.00			3522.00	
Drill Pipe	31.00			3553.00	
Change Over Sub	1.00			3554.00	
Recorder	0.00	8321	Inside	3554.00	
Recorder	0.00	8737	Outside	3554.00	
Perforations	15.00			3569.00	
Bullnose	3.00			3572.00	55.00 Bottom Packers & Anchor

**Total Tool Length: 75.00**



**TRILOBITE  
TESTING, INC.**

# DRILL STEM TEST REPORT

**FLUID SUMMARY**

Downing-Nelson Oil Co Inc

**12-14s-19w Ellis, KS**

PO Box 1019  
Hays KS 67601

**Pfeifer #1-12**

Job Ticket: 46383

**DST#: 1**

ATTN: Ron Nelson

Test Start: 2012.01.24 @ 09:56:16

## Mud and Cushion Information

Mud Type: Gel Chem

Cushion Type:

Oil API:

deg API

Mud Weight: 8.00 lb/gal

Cushion Length:

ft

Water Salinity:

ppm

Viscosity: 64.00 sec/qt

Cushion Volume:

bbbl

Water Loss: 7.58 in<sup>3</sup>

Gas Cushion Type:

Resistivity: ohm.m

Gas Cushion Pressure:

psig

Salinity: 2000.00 ppm

Filter Cake: inches

## Recovery Information

Recovery Table

Length ft	Description	Volume bbl
31.00	GOCWM 35%G 20%O 15%W 30%M	0.435
94.00	GOCM 10%G 20%O 70%M	1.319
0.00	1858-GIP	0.000

Total Length: 125.00 ft

Total Volume: 1.754 bbl

Num Fluid Samples: 0

Num Gas Bombs: 0

Serial #:

Laboratory Name:

Laboratory Location:

Recovery Comments:

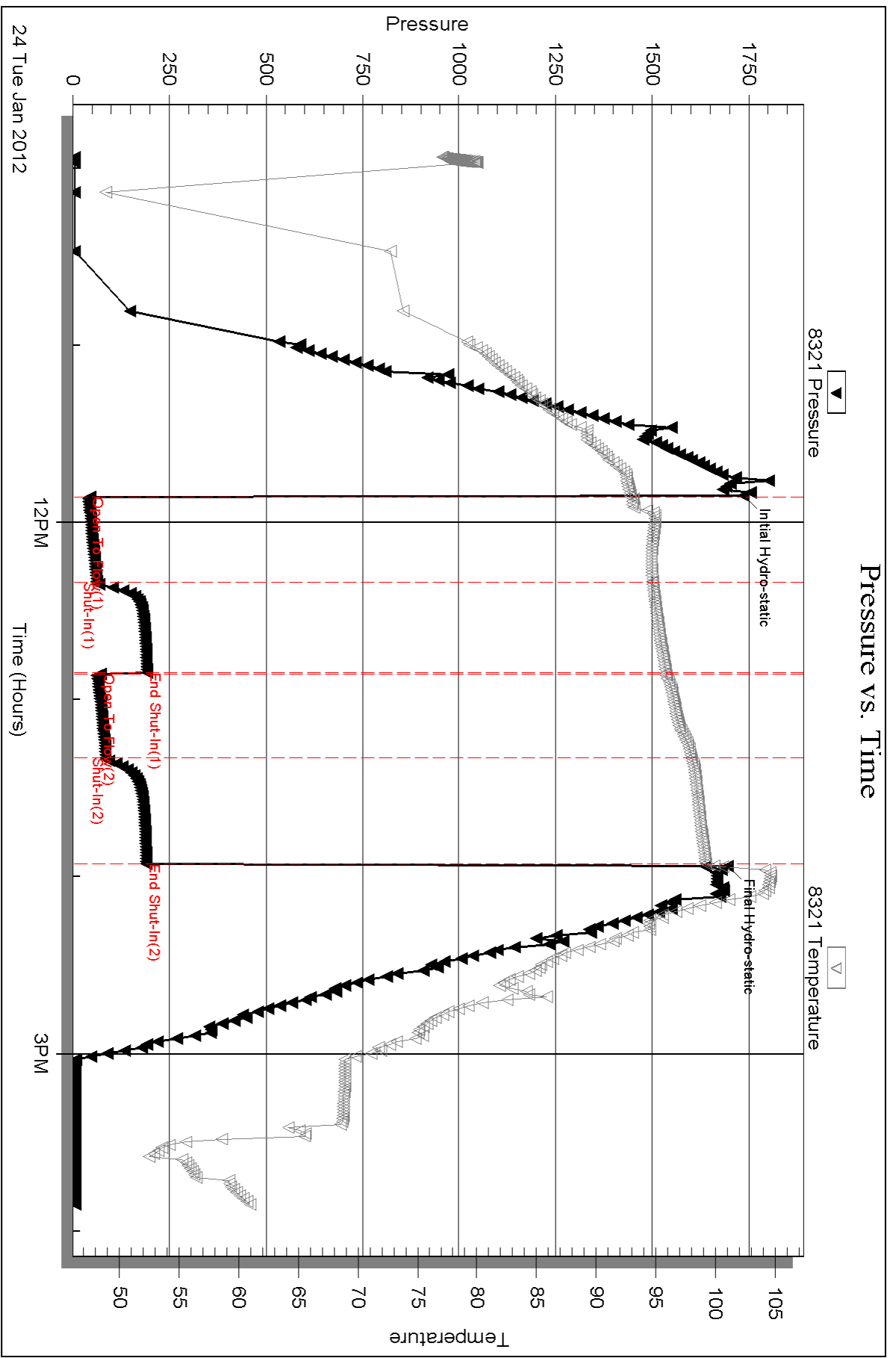
Serial #: 8321

Inside

Dowling-Nelson Oil Co Inc

Pfeifer #1-12

DST Test Number: 1



Triobite Testing, Inc

Ref. No: 46383

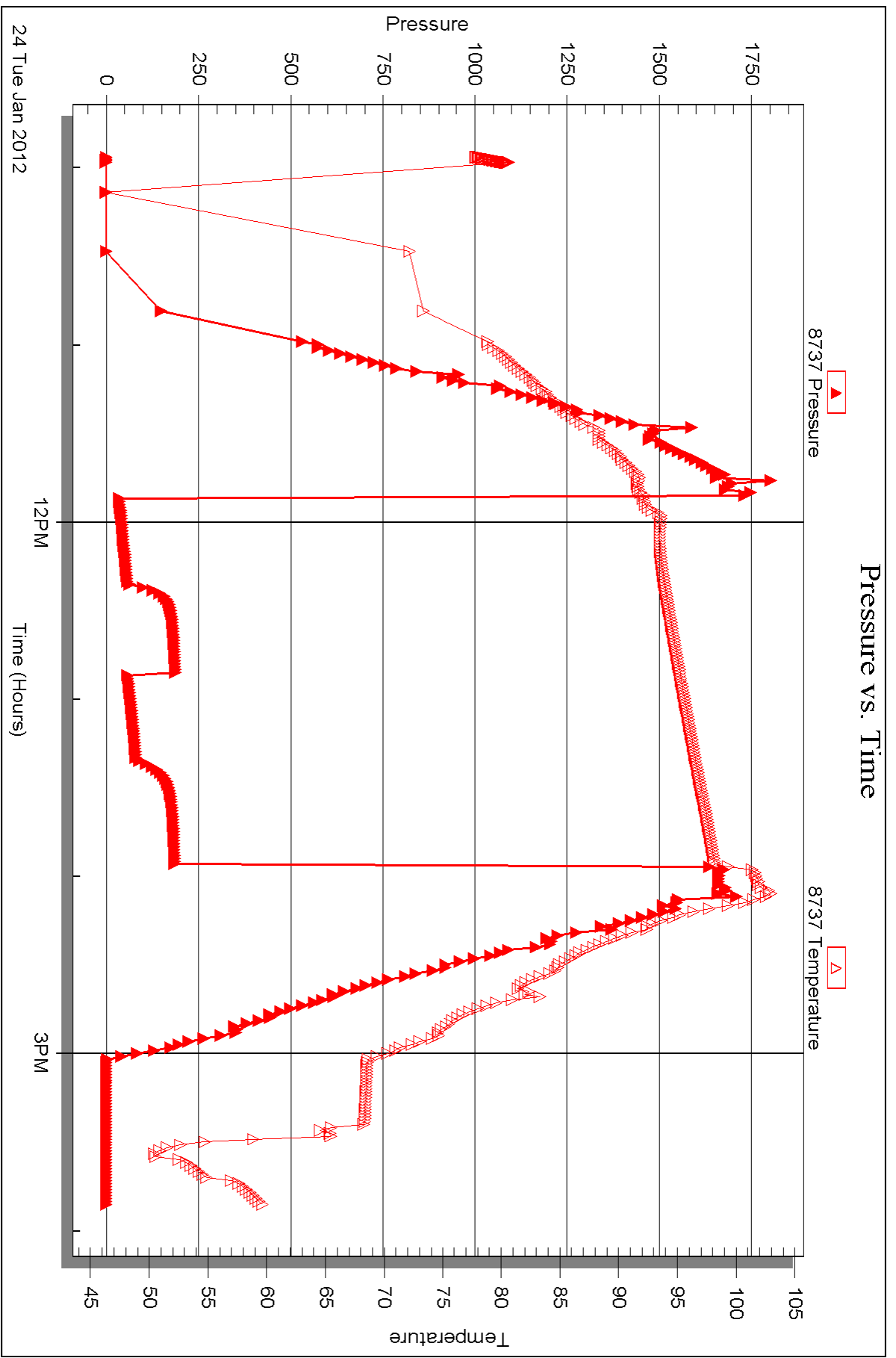
Printed: 2012.02.01 @ 11:39:03

Serial #: 8737

Outside Dow nung-Nelson Oil Co Inc

Pfeifer #1-12

DST Test Number: 1



Triobite Testing, Inc

Ref. No: 46383

Printed: 2012.02.01 @ 11:39:03



## DRILL STEM TEST REPORT

Prepared For: **Downing-Nelson Oil Co Inc**

PO Box 1019  
Hays KS 67601

ATTN: Ron Nelson

### **Pfeifer #1-12**

#### **12-14s-19w Ellis,KS**

Start Date: 2012.01.25 @ 05:03:14

End Date: 2012.01.25 @ 12:41:44

Job Ticket #: 46384                      DST #: 2

Trilobite Testing, Inc

PO Box 362 Hays, KS 67601

ph: 785-625-4778 fax: 785-625-5620

Printed: 2012.02.01 @ 11:38:14





**TRILOBITE  
TESTING, INC.**

# DRILL STEM TEST REPORT

Downing-Nelson Oil Co Inc

**12-14s-19w Ellis, KS**

PO Box 1019  
Hays KS 67601

**Pfeifer #1-12**

Job Ticket: 46384

**DST#: 2**

ATTN: Ron Nelson

Test Start: 2012.01.25 @ 05:03:14

## GENERAL INFORMATION:

Formation: **LKC- H & I**

Deviated: No Whipstock: ft (KB)

Time Tool Opened: 07:38:14

Time Test Ended: 12:41:44

Test Type: Conventional Bottom Hole (Reset)

Tester: Jeff Brown

Unit No: 150

**Interval: 3623.00 ft (KB) To 3676.00 ft (KB) (TVD)**

Reference Elevations: 2211.00 ft (KB)

Total Depth: 3676.00 ft (KB) (TVD)

2203.00 ft (CF)

Hole Diameter: 7.88 inches Hole Condition: Good

KB to GR/CF: 8.00 ft

**Serial #: 8321**

**Inside**

Press @ Run Depth: 42.22 psig @ 3659.00 ft (KB)

Capacity: 8000.00 psig

Start Date: 2012.01.25

End Date:

2012.01.25

Last Calib.:

2012.01.25

Start Time: 05:03:15

End Time:

12:40:44

Time On Btm:

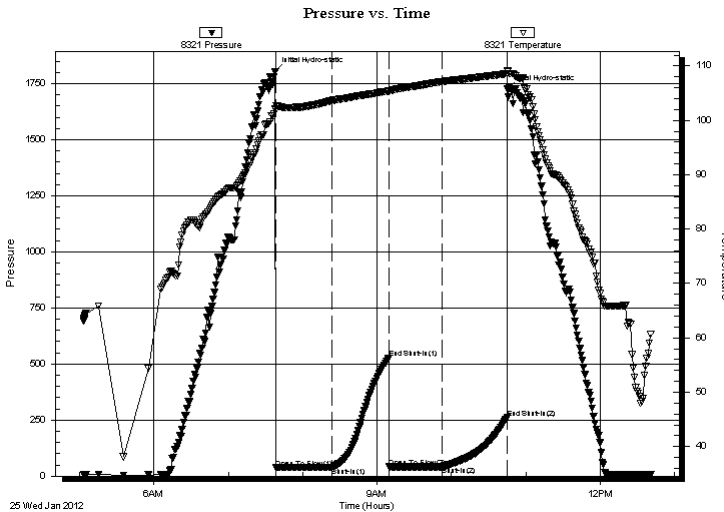
2012.01.25 @ 07:37:44

Time Off Btm:

2012.01.25 @ 10:45:14

**TEST COMMENT:** IFP-Weak blow built to 2 in  
ISI-Dead no blow back  
FFP-Weak blow built to 1 in  
FSI-Dead no blow back

## PRESSURE SUMMARY



Time (Min.)	Pressure (psig)	Temp (deg F)	Annotation
0	1805.02	102.09	Initial Hydro-static
1	37.36	101.88	Open To Flow (1)
46	40.57	103.61	Shut-In(1)
92	525.19	105.40	End Shut-In(1)
92	41.42	105.32	Open To Flow (2)
135	42.22	107.16	Shut-In(2)
187	260.28	108.59	End Shut-In(2)
188	1725.40	109.20	Final Hydro-static

## Recovery

Length (ft)	Description	Volume (bbl)
25.00	SOCM 5% O95% M	0.35

## Gas Rates

	Choke (inches)	Pressure (psig)	Gas Rate (Mcf/d)

\* Recovery from multiple tests





**TRILOBITE  
TESTING, INC.**

# DRILL STEM TEST REPORT

**TOOL DIAGRAM**

Downing-Nelson Oil Co Inc

**12-14s-19w Ellis,KS**

PO Box 1019  
Hays KS 67601

**Pfeifer #1-12**

Job Ticket: 46384

**DST#: 2**

ATTN: Ron Nelson

Test Start: 2012.01.25 @ 05:03:14

## Tool Information

Drill Pipe:	Length: 3612.00 ft	Diameter: 3.80 inches	Volume: 50.67 bbl	Tool Weight: 2000.00 lb
Heavy Wt. Pipe:	Length: 0.00 ft	Diameter: 2.25 inches	Volume: 0.00 bbl	Weight set on Packer: 20000.00 lb
Drill Collar:	Length: 0.00 ft	Diameter: 2.70 inches	Volume: 0.00 bbl	Weight to Pull Loose: 64000.00 lb
			<u>Total Volume: 50.67 bbl</u>	Tool Chased 0.00 ft
Drill Pipe Above KB:	9.00 ft			String Weight: Initial 54000.00 lb
Depth to Top Packer:	3623.00 ft			Final 55000.00 lb
Depth to Bottom Packer:	ft			
Interval between Packers:	53.00 ft			
Tool Length:	73.00 ft			
Number of Packers:	2	Diameter: 6.75 inches		
Tool Comments:				

Tool Description	Length (ft)	Serial No.	Position	Depth (ft)	Accum. Lengths
------------------	-------------	------------	----------	------------	----------------

Change Over Sub	1.00			3604.00	
Shut In Tool	5.00			3609.00	
Hydraulic tool	5.00			3614.00	
Packer	4.00			3618.00	20.00 Bottom Of Top Packer
Packer	5.00			3623.00	
Stubb	1.00			3624.00	
Perforations	2.00			3626.00	
Change Over Sub	1.00			3627.00	
Drill Pipe	31.00			3658.00	
Change Over Sub	1.00			3659.00	
Recorder	0.00	8321	Inside	3659.00	
Recorder	0.00	8737	Outside	3659.00	
Perforations	14.00			3673.00	
Bullnose	3.00			3676.00	53.00 Bottom Packers & Anchor

**Total Tool Length: 73.00**



**TRILOBITE  
TESTING, INC.**

# DRILL STEM TEST REPORT

**FLUID SUMMARY**

Downing-Nelson Oil Co Inc

**12-14s-19w Ellis,KS**

PO Box 1019  
Hays KS 67601

**Pfeifer #1-12**

Job Ticket: 46384

**DST#: 2**

ATTN: Ron Nelson

Test Start: 2012.01.25 @ 05:03:14

## Mud and Cushion Information

Mud Type: Gel Chem

Cushion Type:

Oil API:

deg API

Mud Weight: 9.00 lb/gal

Cushion Length:

ft

Water Salinity:

ppm

Viscosity: 51.00 sec/qt

Cushion Volume:

bbbl

Water Loss: 7.98 in<sup>3</sup>

Gas Cushion Type:

Resistivity: ohm.m

Gas Cushion Pressure:

psig

Salinity: 2500.00 ppm

Filter Cake: inches

## Recovery Information

Recovery Table

Length ft	Description	Volume bbl
25.00	SOCM5%O95%M	0.351

Total Length: 25.00 ft      Total Volume: 0.351 bbl

Num Fluid Samples: 0

Num Gas Bombs: 0

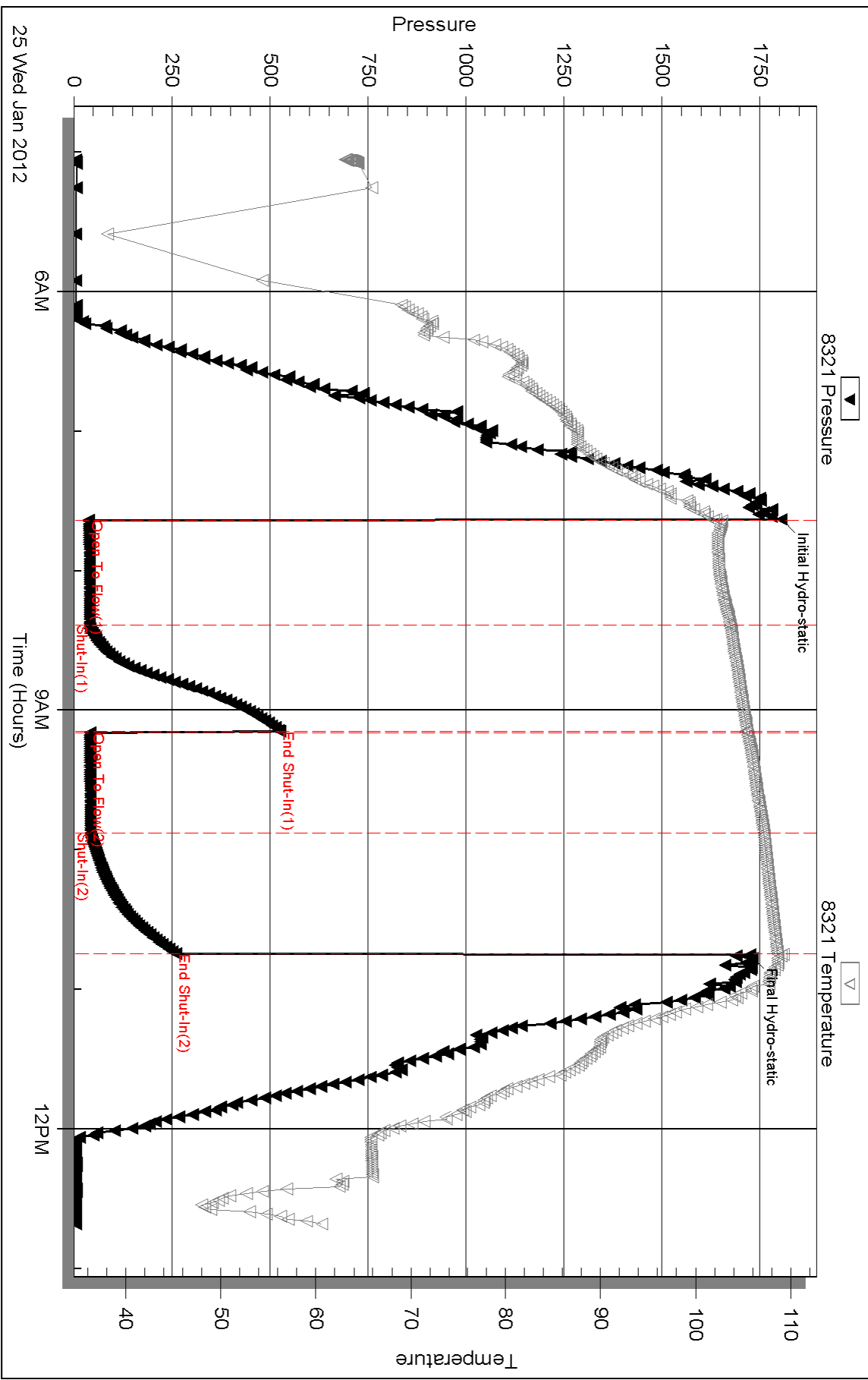
Serial #:

Laboratory Name:

Laboratory Location:

Recovery Comments:

### Pressure vs. Time



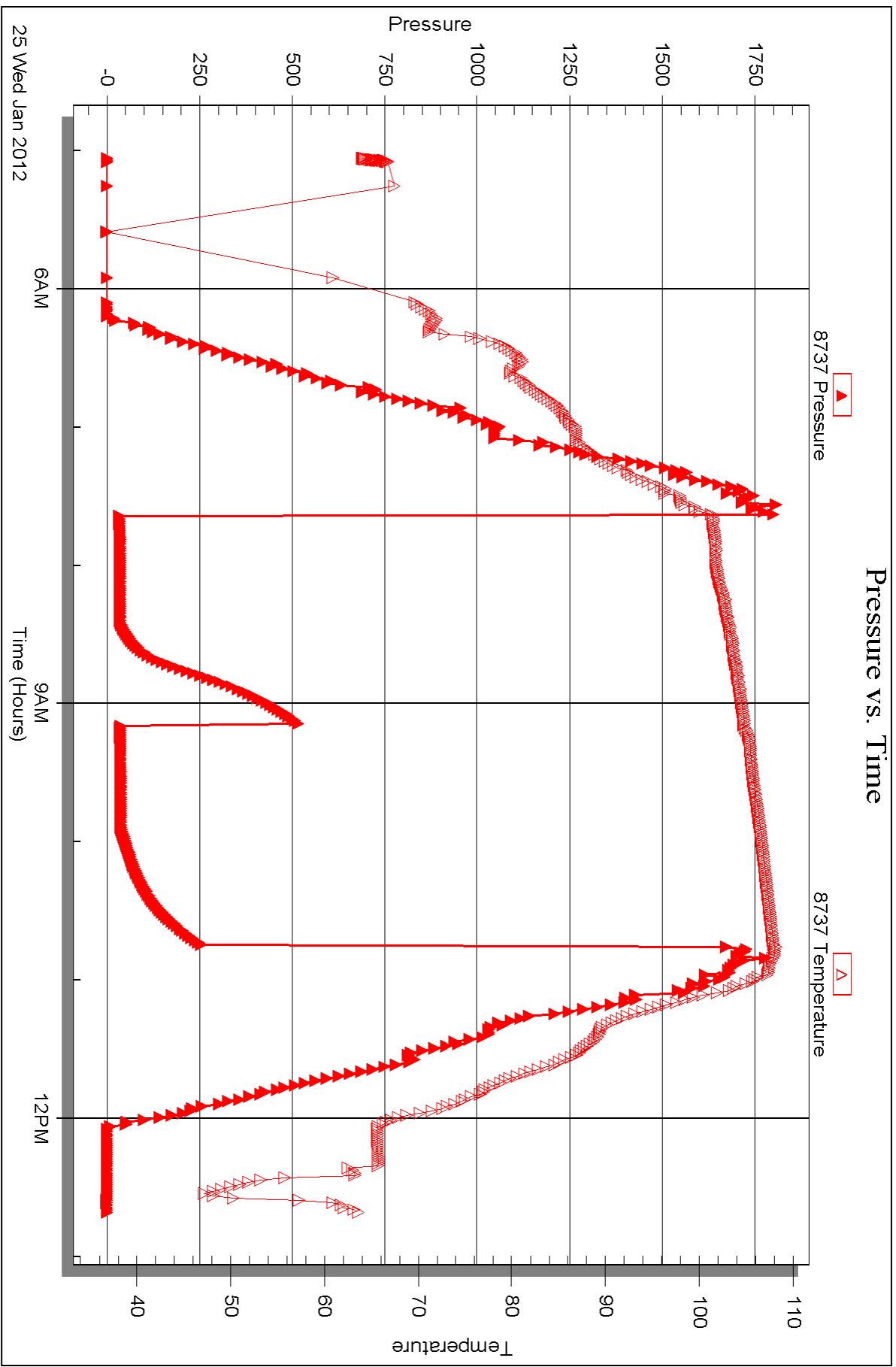
Serial #: 8737

Outside

Dow nung-Nelson Oil Co Inc

Pfeifer #1-12

DST Test Number: 2



Triobite Testing, Inc

Ref. No: 46384

Printed: 2012.02.01 @ 11:38:18



## DRILL STEM TEST REPORT

Prepared For: **Downing-Nelson Oil Co Inc**

PO Box 1019  
Hays KS 67601

ATTN: Ron Nelson

### **Pfeifer #1-12**

#### **12-14s-19w Ellis,KS**

Start Date: 2012.01.25 @ 18:48:01

End Date: 2012.01.26 @ 01:50:01

Job Ticket #: 46385                      DST #: 3

Trilobite Testing, Inc

PO Box 362 Hays, KS 67601

ph: 785-625-4778 fax: 785-625-5620

Printed: 2012.02.01 @ 11:36:59

Downing-Nelson Oil Co Inc  
12-14s-19w Ellis,KS  
Pfeifer #1-12  
DST # 3  
LKC-J  
2012.01.25



**TRILOBITE TESTING, INC.**

# DRILL STEM TEST REPORT

Downing-Nelson Oil Co Inc

**12-14s-19w Ellis, KS**

PO Box 1019  
Hays KS 67601

**Pfeifer #1-12**

Job Ticket: 46385

**DST#: 3**

ATTN: Ron Nelson

Test Start: 2012.01.25 @ 18:48:01

## GENERAL INFORMATION:

Formation: **LKC-J**  
 Deviated: No Whipstock: ft (KB)  
 Time Tool Opened: 20:37:01  
 Time Test Ended: 01:50:01  
 Interval: **3680.00 ft (KB) To 3696.00 ft (KB) (TVD)**  
 Total Depth: 3696.00 ft (KB) (TVD)  
 Hole Diameter: 7.88 inches Hole Condition: Good  
 Test Type: Conventional Bottom Hole (Reset)  
 Tester: Jeff Brown  
 Unit No: 150  
 Reference Elevations: 2211.00 ft (KB)  
 2203.00 ft (CF)  
 KB to GR/CF: 8.00 ft

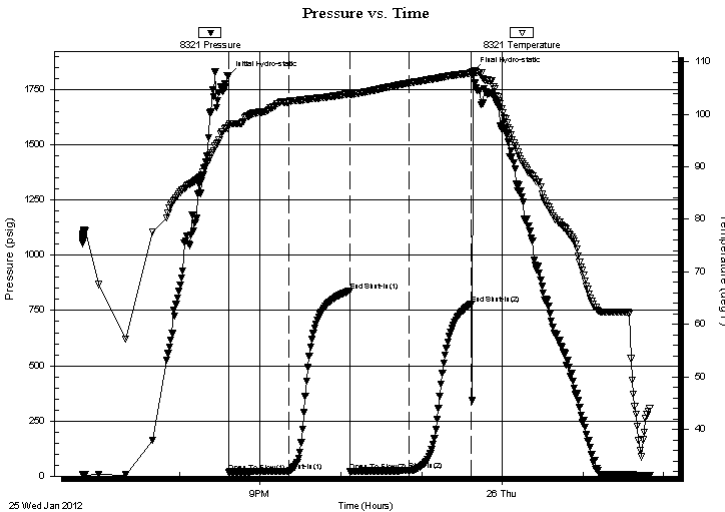
## Serial #: 8321

Inside

Press @ Run Depth: 24.72 psig @ 3683.00 ft (KB) Capacity: 8000.00 psig  
 Start Date: 2012.01.25 End Date: 2012.01.26 Last Calib.: 2012.01.26  
 Start Time: 18:48:02 End Time: 01:50:01 Time On Btm: 2012.01.25 @ 20:36:31  
 Time Off Btm: 2012.01.25 @ 23:38:01

**TEST COMMENT:** IFP-Weak blow built to 2 3/4 in  
 ISI-Dead no blow back  
 FFP-Weak blow built to 1 in  
 FSI-Dead no blow back

## PRESSURE SUMMARY



Time (Min.)	Pressure (psig)	Temp (deg F)	Annotation
0	1814.38	97.78	Initial Hydro-static
1	18.40	97.80	Open To Flow (1)
45	21.89	102.34	Shut-In(1)
90	838.65	103.92	End Shut-In(1)
91	22.29	103.76	Open To Flow (2)
135	24.72	105.94	Shut-In(2)
181	779.40	107.82	End Shut-In(2)
182	1833.10	108.08	Final Hydro-static

## Recovery

Length (ft)	Description	Volume (bbl)
20.00	Mud with oil spots	0.28

\* Recovery from multiple tests

## Gas Rates

Choke (inches)	Pressure (psig)	Gas Rate (Mcf/d)







**TRILOBITE  
TESTING, INC.**

# DRILL STEM TEST REPORT

**TOOL DIAGRAM**

Downing-Nelson Oil Co Inc

**12-14s-19w Ellis,KS**

PO Box 1019  
Hays KS 67601

**Pfeifer #1-12**

Job Ticket: 46385

**DST#: 3**

ATTN: Ron Nelson

Test Start: 2012.01.25 @ 18:48:01

## Tool Information

Drill Pipe:	Length: 3676.00 ft	Diameter: 3.80 inches	Volume: 51.56 bbl	Tool Weight: 2000.00 lb
Heavy Wt. Pipe:	Length: 0.00 ft	Diameter: 2.25 inches	Volume: 0.00 bbl	Weight set on Packer: 20000.00 lb
Drill Collar:	Length: 0.00 ft	Diameter: 2.70 inches	Volume: 0.00 bbl	Weight to Pull Loose: 69000.00 lb
			<u>Total Volume: 51.56 bbl</u>	Tool Chased 0.00 ft
Drill Pipe Above KB:	16.00 ft			String Weight: Initial 54000.00 lb
Depth to Top Packer:	3680.00 ft			Final 54000.00 lb
Depth to Bottom Packer:	ft			
Interval between Packers:	16.00 ft			
Tool Length:	36.00 ft			
Number of Packers:	2	Diameter: 6.75 inches		

Tool Comments:

Tool Description	Length (ft)	Serial No.	Position	Depth (ft)	Accum. Lengths
------------------	-------------	------------	----------	------------	----------------

Change Over Sub	1.00			3661.00	
Shut In Tool	5.00			3666.00	
Hydraulic tool	5.00			3671.00	
Packer	4.00			3675.00	20.00 Bottom Of Top Packer
Packer	5.00			3680.00	
Stubb	1.00			3681.00	
Perforations	2.00			3683.00	
Recorder	0.00	8321	Inside	3683.00	
Recorder	0.00	8737	Outside	3683.00	
Perforations	10.00			3693.00	
Bullnose	3.00			3696.00	16.00 Bottom Packers & Anchor

**Total Tool Length: 36.00**



**TRILOBITE  
TESTING, INC.**

# DRILL STEM TEST REPORT

**FLUID SUMMARY**

Downing-Nelson Oil Co Inc

**12-14s-19w Ellis,KS**

PO Box 1019  
Hays KS 67601

**Pfeifer #1-12**

Job Ticket: 46385

**DST#: 3**

ATTN: Ron Nelson

Test Start: 2012.01.25 @ 18:48:01

## Mud and Cushion Information

Mud Type: Gel Chem

Cushion Type:

Oil API:

deg API

Mud Weight: 9.00 lb/gal

Cushion Length:

ft

Water Salinity:

ppm

Viscosity: 56.00 sec/qt

Cushion Volume:

bbbl

Water Loss: 7.98 in<sup>3</sup>

Gas Cushion Type:

Resistivity: ohm.m

Gas Cushion Pressure:

psig

Salinity: 3000.00 ppm

Filter Cake: inches

## Recovery Information

Recovery Table

Length ft	Description	Volume bbl
20.00	Mud with oil spots	0.281

Total Length: 20.00 ft      Total Volume: 0.281 bbl

Num Fluid Samples: 0

Num Gas Bombs: 0

Serial #:

Laboratory Name:

Laboratory Location:

Recovery Comments:

Serial #: 8321

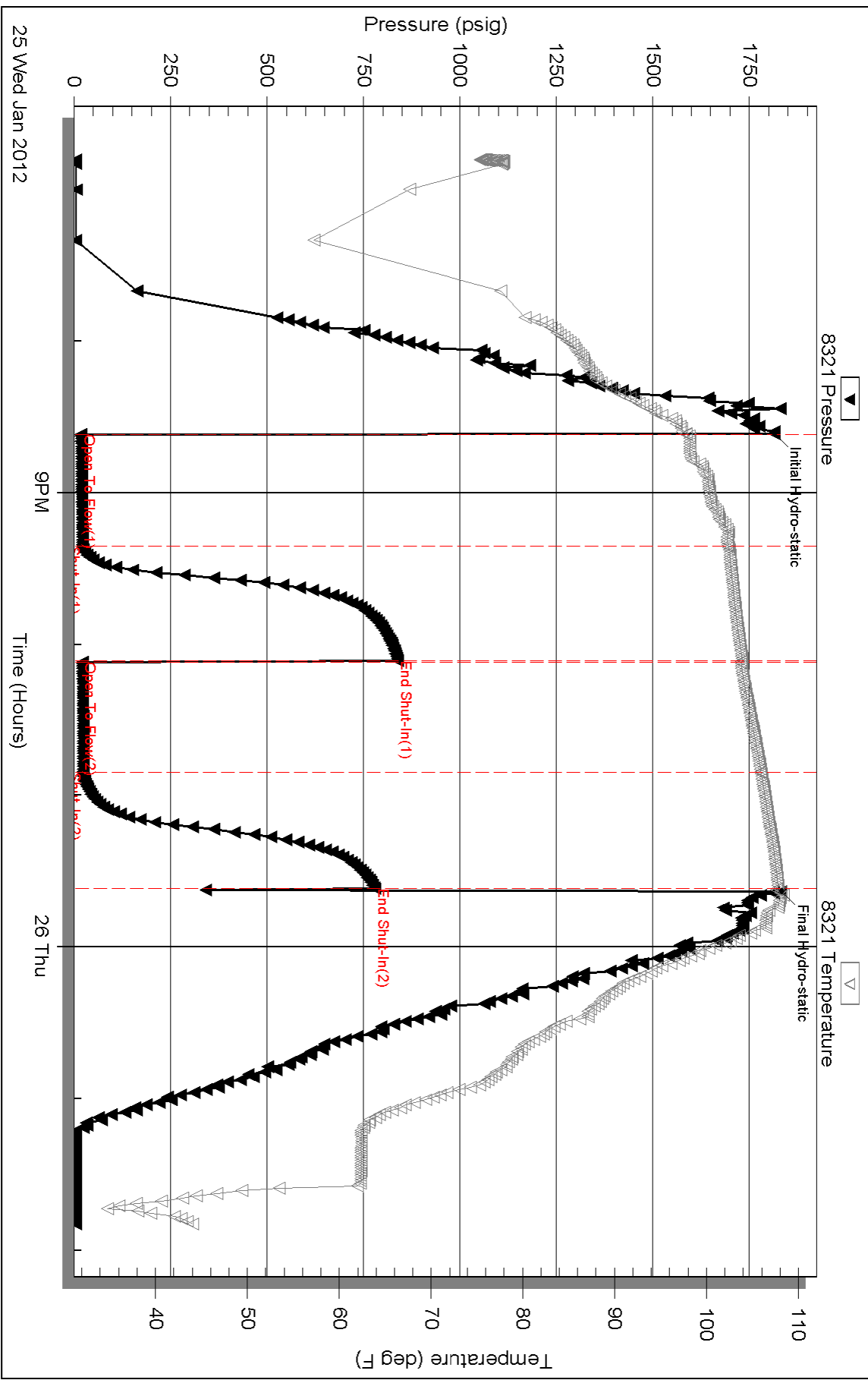
Inside

Dow nung-Nelson Oil Co Inc

Pfeifer #1-12

DST Test Number: 3

### Pressure vs. Time



Triobite Testing, Inc

Ref. No: 46385

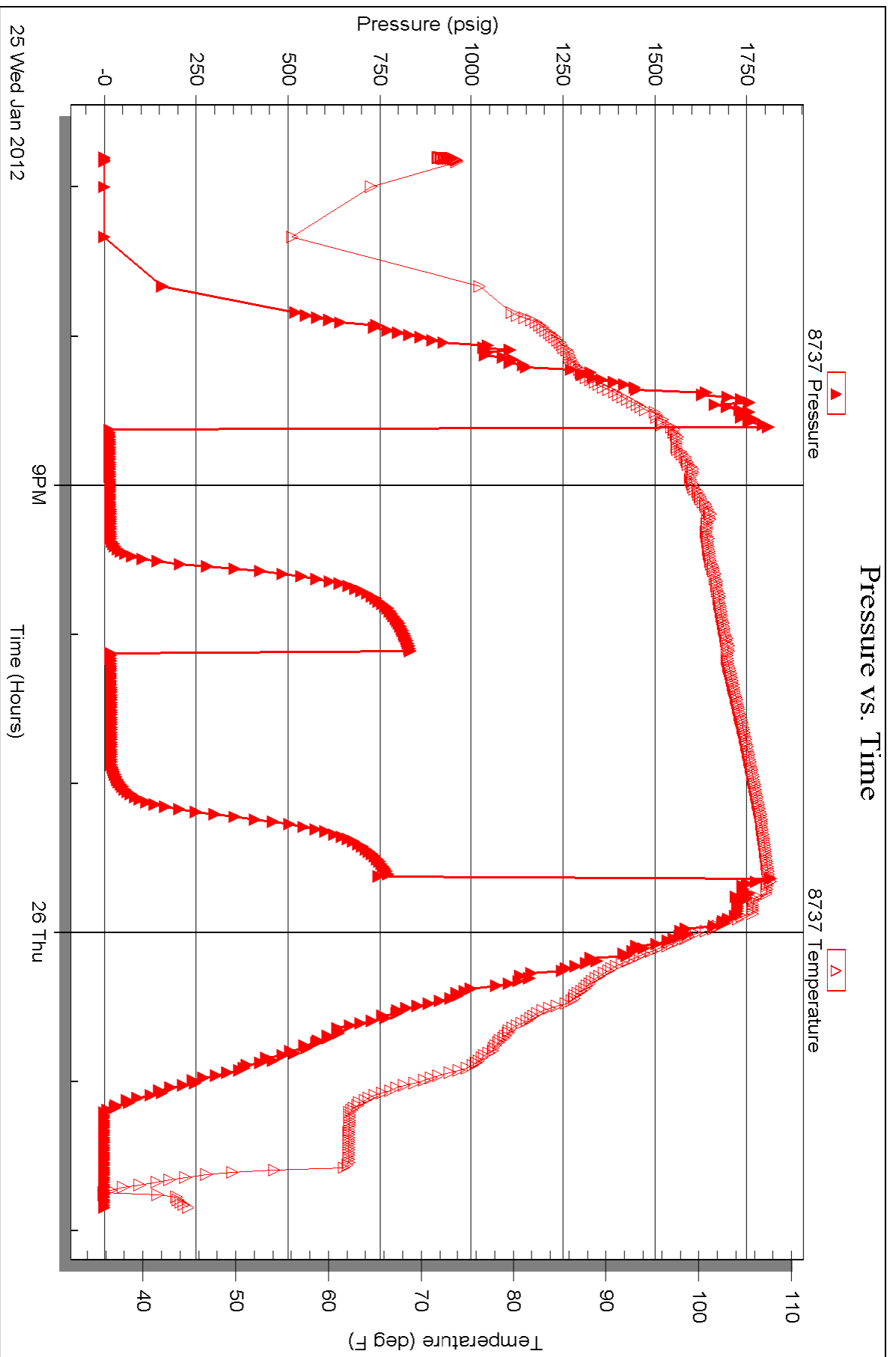
Printed: 2012.02.01 @ 11:37:02

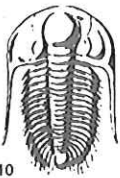
Serial #: 8737

Outside Dow nung-Nelson Oil Co Inc

Pfeifer #1-12

DST Test Number: 3





# TRILOBITE TESTING INC.

P.O. Box 1733 • Hays, Kansas 67601

RECEIVED  
JAN 30 2012

## Test Ticket

NO. 46383

BY: \_\_\_\_\_

Well Name & No. Pfeifer 1-12 Test No. 1 Date 1-24-12  
 Company Downing-Nelson Oil Co INC Elevation 2211 KB 2203 GL  
 Address Po Box 1019 Hays KS 67601  
 Co. Rep / Geo. Marc Downing Rig Discovery #3  
 Location: Sec. 12 Twp. 14 S Rge. 19 W Co. ELLIS State KS

Interval Tested 3517-3572 Zone Tested KLC-C+D  
 Anchor Length 55 Drill Pipe Run 3517 Mud Wt. 8.5  
 Top Packer Depth 3512 Drill Collars Run 0 Vis 2.4  
 Bottom Packer Depth 3517 Wt. Pipe Run 0 WL 7.6  
 Total Depth 3572 Chlorides 2000 ppm System LCM 2 1/2  
 Blow Description FR-Strong Blow BOB IN 2 1/2 min  
BT-Dead NO Blow Back  
FR-Strong Blow BOB IN 4 min ?  
FR-Weak Surface Blow Back

Rec	Feet of	%gas	%oil	%water	%mud
<u>31</u>	<u>CoCWM</u>	<u>35</u>	<u>20</u>	<u>15</u>	<u>30</u>
<u>94</u>	<u>CoCm</u>	<u>10</u>	<u>20</u>		<u>70</u>
	<u>1858-CoIP</u>				

Rec Total 125 BHT \_\_\_\_\_ Gravity \_\_\_\_\_ API RW, 1169 @ 56.4 °F Chlorides 56,000 ppm

(A) Initial Hydrostatic 1736 1736  Test 1125 T-On Location 7:58  
 (B) First Initial Flow 45  Jars \_\_\_\_\_ T-Started 9:56  
 (C) First Final Flow 203  Safety Joint \_\_\_\_\_ T-Open 11:50  
 (D) Initial Shut-In 192  Circ Sub \_\_\_\_\_ T-Pulled 13:50  
 (E) Second Initial Flow 72  Hourly Standby \_\_\_\_\_ T-Out 15:51  
 (F) Second Final Flow 85  Mileage 12 RT 16.80 Comments \_\_\_\_\_  
 (G) Final Shut-In 190  Sampler \_\_\_\_\_  
 (H) Final Hydrostatic 1169  Straddle \_\_\_\_\_  Ruined Shale Packer \_\_\_\_\_  
 Shale Packer \_\_\_\_\_  Ruined Packer \_\_\_\_\_  
 Extra Packer \_\_\_\_\_  Extra Copies \_\_\_\_\_  
 Initial Open 30  Extra Recorder \_\_\_\_\_ Sub Total 0  
 Initial Shut-In 30  Day Standby \_\_\_\_\_ Total 1141.80  
 Final Flow 30  Accessibility \_\_\_\_\_ MP/DST Disc't \_\_\_\_\_  
 Final Shut-In 30 Sub Total 1141.80

Approved By \_\_\_\_\_ Our Representative Jeff Brown

Trilobite Testing Inc. shall not be liable for damaged of any kind of the property or personnel of the one for whom a test is made, or for any loss suffered or sustained, directly or indirectly, through the use of its equipment, or its statements or opinion concerning the results of any test, tools lost or damaged in the hole shall be paid for at cost by the party for whom the test is made.



# TRILOBITE TESTING INC.

P.O. Box 1733 • Hays, Kansas 67601

RECEIVED  
JAN 30 2012

## Test Ticket

NO. 46384

4/10

BY:

Well Name & No. Pfeifer 1-12 Test No. 2 Date 1-25-12  
 Company Downing-Nelson oil CO INC Elevation 2211 KB 2203 GL  
 Address PO Box 1019 Hays KS 67601  
 Co. Rep / Geo. Marc Downing Rig Discovery #3  
 Location: Sec. 12 Twp. 14S Rge. 19W Co. ELLIS State KS

Interval Tested 32623-32673 Zone Tested LKC-H + I  
 Anchor Length 53 Drill Pipe Run 32612 Mud Wt. 8.9  
 Top Packer Depth 32618 Drill Collars Run 0 Vis 51  
 Bottom Packer Depth 32623 Wt. Pipe Run 0 WL 8.0  
 Total Depth 32673 Chlorides 2500 ppm System LCM 2#

Blow Description FFP-Weak Blow Built TO 2 IN  
ISJ-Dead NO Blow Back  
FFP-Weak Blow Built TO 1 IN  
FSI-Dead NO Blow Back

Rec	Feet of	%gas	%oil	%water	%mud
<u>25</u>	<u>SOCM</u>		<u>5</u>		<u>95</u>
Rec	Feet of	%gas	%oil	%water	%mud
Rec	Feet of	%gas	%oil	%water	%mud
Rec	Feet of	%gas	%oil	%water	%mud
Rec	Feet of	%gas	%oil	%water	%mud

Rec Total 25 BHT 109 Gravity \_\_\_\_\_ API RW \_\_\_\_\_ @ \_\_\_\_\_ °F Chlorides \_\_\_\_\_ ppm

(A) Initial Hydrostatic 1805  Test 1125 T-On Location 4:09  
 (B) First Initial Flow 37  Jars \_\_\_\_\_ T-Started 5:03  
 (C) First Final Flow 41  Safety Joint \_\_\_\_\_ T-Open 7:38  
 (D) Initial Shut-In 525  Circ Sub \_\_\_\_\_ T-Pulled 10:38  
 (E) Second Initial Flow 41  Hourly Standby \_\_\_\_\_ T-Out 12:41  
 (F) Second Final Flow 42  Mileage 12 RT 110.80 Comments \_\_\_\_\_  
 (G) Final Shut-In 260  Sampler \_\_\_\_\_  
 (H) Final Hydrostatic 1725  Straddle \_\_\_\_\_

Initial Open 45  Shale Packer \_\_\_\_\_  Ruined Shale Packer \_\_\_\_\_  
 Initial Shut-In 45  Extra Packer \_\_\_\_\_  Ruined Packer \_\_\_\_\_  
 Final Flow 45  Extra Recorder \_\_\_\_\_  Extra Copies \_\_\_\_\_  
 Final Shut-In 45  Day Standby \_\_\_\_\_ Sub Total 8  
 Accessibility \_\_\_\_\_ Total 1141.80  
 Sub Total 1141.80 MP/DST Disc't \_\_\_\_\_

Approved By \_\_\_\_\_ Our Representative Jeff Brown

TriLOBite Testing Inc. shall not be liable for damaged of any kind of the property or personnel of the one for whom a test is made, or for any loss suffered or sustained, directly or indirectly, through the use of its equipment, or its statements or opinion concerning the results of any test, tools lost or damaged in the hole shall be paid for at cost by the party for whom the test is made.



# TRILOBITE TESTING INC.

P.O. Box 1733 • Hays, Kansas 67601

RECEIVED  
JAN 30 2012  
BY: \_\_\_\_\_

## Test Ticket

NO. 46385

Well Name & No. Peifer 1-12 Test No. 3 Date 1-25-12  
 Company Downing-Nelson Oil Co INC Elevation 2211 KB 2203 GL  
 Address Po Box 1019 Hays KS 67601  
 Co. Rep / Geo. Marc Downing Rig Discovery #3  
 Location: Sec. 12 Twp. 14S Rge. 19W Co. ELLIS State KS

Interval Tested 3680-3694 Zone Tested LKC-5  
 Anchor Length 16 Drill Pipe Run 3670 Mud Wt. 8.9  
 Top Packer Depth 3675 Drill Collars Run 0 Vis 520  
 Bottom Packer Depth 3680 Wt. Pipe Run 0 WL 8.0  
 Total Depth 3694 Chlorides 3000 ppm System LCM 1 1/2

Blow Description APP-Weak Blow Built TO 2 3/4  
FSI-Dead No Back  
APP-Weak Blow Built TO 1 IN  
FSI-Dead No Blow Back

Rec	Feet of	%gas	%oil	%water	%mud
<u>20</u>	<u>Mud with A seam of oil</u>				
Rec	Feet of	%gas	%oil	%water	%mud
Rec	Feet of	%gas	%oil	%water	%mud
Rec	Feet of	%gas	%oil	%water	%mud
Rec	Feet of	%gas	%oil	%water	%mud

Rec Total 20 BHT 108 Gravity \_\_\_\_\_ API RW \_\_\_\_\_ @ \_\_\_\_\_ °F Chlorides \_\_\_\_\_ ppm

(A) Initial Hydrostatic 1814  Test 1125- T-On Location 18:06  
 (B) First Initial Flow 18  Jars \_\_\_\_\_ T-Started 18:48  
 (C) First Final Flow 22  Safety Joint \_\_\_\_\_ T-Open 20:36  
 (D) Initial Shut-In 839  Circ Sub \_\_\_\_\_ T-Pulled 23:36  
 (E) Second Initial Flow 22  Hourly Standby \_\_\_\_\_ T-Out 1:50  
 (F) Second Final Flow 25  Mileage 12 RT 16.80 Comments \_\_\_\_\_  
 (G) Final Shut-In 779  Sampler \_\_\_\_\_  
 (H) Final Hydrostatic 1833  Straddle \_\_\_\_\_  Ruined Shale Packer \_\_\_\_\_  
 Shale Packer \_\_\_\_\_  Ruined Packer \_\_\_\_\_  
 Extra Packer \_\_\_\_\_  Extra Copies \_\_\_\_\_  
 Extra Recorder \_\_\_\_\_ Sub Total 0  
 Day Standby \_\_\_\_\_ Total 1141.80  
 Accessibility \_\_\_\_\_ MP/DST Disc't \_\_\_\_\_  
 Sub Total 1141.80

Approved By \_\_\_\_\_ Our Representative Jeff Brown

Trilobite Testing Inc. shall not be liable for damaged of any kind of the property or personnel of the one for whom a test is made, or for any loss suffered or sustained, directly or indirectly, through the use of its equipment, or its statements or opinion concerning the results of any test, tools lost or damaged in the hole shall be paid for at cost by the party for whom the test is made.