



DRILL STEM TEST REPORT

Prepared For: **Trans Pacific Oil Corporation**

100 South Main
Suite 200
Wichita, Kansas 67202+3735

ATTN: Christina Goodrich

14/17S/26W/Ness

Dumler Unit A 1-14

Start Date: 2011.10.31 @ 15:16:00

End Date: 2011.10.31 @ 21:57:30

Job Ticket #: 18792 DST #: 1

Superior Testers Enterprises LLC
PO Box 138 Great Bend KS 67530
1-800-792-6902

Printed: 2011.10.31 @ 20:18:34

Trans Pacific Oil Corporation
Dumler Unit A 1-14
14/17S/26W/Ness
DST # 1
Marmaton
2011.10.31



DRILL STEM TEST REPORT

Trans Pacific Oil Corporation
 100 South Main
 Suite 200
 Wichita, Kansas 67202+3735
 ATTN: Christina Goodrich

Dumler Unit A 1-14

14/17S/26W/Ness

Job Ticket: 18792

DST#: 1

Test Start: 2011.10.31 @ 15:16:00

GENERAL INFORMATION:

Formation: **Marmaton**

Deviated: No Whipstock: ft (KB)

Time Tool Opened: 16:53:30

Time Test Ended: 21:57:30

Test Type: Conventional Bottom Hole (Initial)

Tester: Ken Swinney

Unit No: 3325 Great Bend/190

Interval: 4197.00 ft (KB) To 4310.00 ft (KB) (TVD)

Reference Elevations: 2591.00 ft (KB)

Total Depth: 4310.00 ft (KB) (TVD)

2582.00 ft (CF)

Hole Diameter: 7.88 inches Hole Condition: Fair

KB to GR/CF: 9.00 ft

Serial #: 6651

Inside

Press @ Run Depth: 85.77 psig @ 4305.71 ft (KB)

Capacity: 5000.00 psig

Start Date: 2011.10.31

End Date:

2011.10.31

Last Calib.:

2011.10.31

Start Time:

15:16:00

End Time:

21:57:30

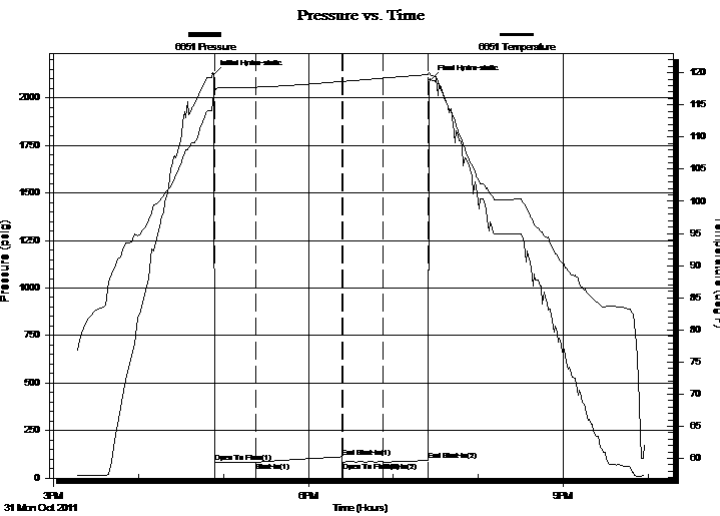
Time On Btm:

2011.10.31 @ 16:53:00

Time Off Btm:

2011.10.31 @ 19:26:30

TEST COMMENT: 1ST Open 30 Minutes/Weak blow/Blow built to 3/4 inch then died back to 1/4 inch
 1ST Shut In 60 Minutes/No blow back
 2ND Open 30 Minutes/No blow
 2ND Shut In 30 Minutes/No blow back



PRESSURE SUMMARY

Time (Min.)	Pressure (psig)	Temp (deg F)	Annotation
0	2122.84	116.90	Initial Hydro-static
1	84.65	117.02	Open To Flow (1)
30	85.30	117.77	Shut-In(1)
91	111.89	118.66	End Shut-In(1)
91	83.53	118.66	Open To Flow (2)
120	85.77	119.18	Shut-In(2)
152	92.15	119.73	End Shut-In(2)
154	2093.98	119.64	Final Hydro-static

Recovery

Gas Rates

Length (ft)	Description	Volume (bbl)
15.00	Watery oil cut mud	0.22
0.00	Water 5% Oil 10% Mud 85%	0.00

	Choke (inches)	Pressure (psig)	Gas Rate (Mcf/d)



DRILL STEM TEST REPORT

Trans Pacific Oil Corporation

Dumler Unit A 1-14

100 South Main
Suite 200
Wichita, Kansas 67202+3735
ATTN: Christina Goodrich

14/17S/26W/Ness

Job Ticket: 18792

DST#: 1

Test Start: 2011.10.31 @ 15:16:00

GENERAL INFORMATION:

Formation: **Marmaton**

Deviated: No Whipstock: ft (KB)

Time Tool Opened: 16:53:30

Time Test Ended: 21:57:30

Test Type: Conventional Bottom Hole (Initial)

Tester: Ken Swinney

Unit No: 3325 Great Bend/190

Interval: 4197.00 ft (KB) To 4310.00 ft (KB) (TVD)

Reference Elevations: 2591.00 ft (KB)

Total Depth: 4310.00 ft (KB) (TVD)

2582.00 ft (CF)

Hole Diameter: 7.88 inches Hole Condition: Fair

KB to GR/CF: 9.00 ft

Serial #: 6749 Outside

Press @ Run Depth: 89.24 psig @ 4306.71 ft (KB)

Capacity: 5000.00 psig

Start Date: 2011.10.31

End Date: 2011.10.31

Last Calib.: 2011.10.31

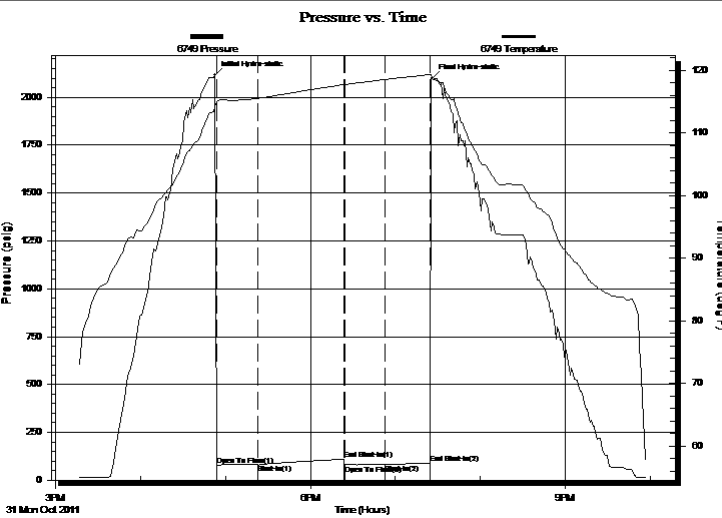
Start Time: 15:16:00

End Time: 21:58:00

Time On Btm: 2011.10.31 @ 16:52:30

Time Off Btm: 2011.10.31 @ 19:26:00

TEST COMMENT: 1ST Open 30 Minutes/Weak blow/Blow built to 3/4 inch then died back to 1/4 inch
 1ST Shut In 60 Minutes/No blow back
 2ND Open 30 Minutes/No blow
 2ND Shut In 30 Minutes/No blow back



PRESSURE SUMMARY

Time (Min.)	Pressure (psig)	Temp (deg F)	Annotation
0	2115.48	114.29	Initial Hydro-static
1	79.35	115.09	Open To Flow (1)
30	82.06	115.54	Shut-In(1)
91	108.91	117.72	End Shut-In(1)
92	79.77	117.73	Open To Flow (2)
121	82.13	118.57	Shut-In(2)
153	89.24	119.33	End Shut-In(2)
154	2099.88	119.06	Final Hydro-static

Recovery

Length (ft)	Description	Volume (bbl)
15.00	Watery oil cut mud	0.22
0.00	Water 5% Oil 10% Mud 85%	0.00

Gas Rates

	Choke (inches)	Pressure (psig)	Gas Rate (Mcf/d)



DRILL STEM TEST REPORT

TOOL DIAGRAM

Trans Pacific Oil Corporation

Dumler Unit A 1-14

100 South Main
Suite 200
Wichita, Kansas 67202+3735
ATTN: Christina Goodrich

14/17S/26W/Ness

Job Ticket: 18792

DST#: 1

Test Start: 2011.10.31 @ 15:16:00

Tool Information

Drill Pipe:	Length: 4196.00 ft	Diameter: 3.88 inches	Volume: 61.36 bbl	Tool Weight: 2000.00 lb
Heavy Wt. Pipe:	Length: 0.00 ft	Diameter: 0.00 inches	Volume: 0.00 bbl	Weight set on Packer: 20000.00 lb
Drill Collar:	Length: 0.00 ft	Diameter: 0.00 inches	Volume: 0.00 bbl	Weight to Pull Loose: 80000.00 lb
			<u>Total Volume: 61.36 bbl</u>	Tool Chased 2.00 ft
Drill Pipe Above KB:	19.00 ft			String Weight: Initial 57000.00 lb
Depth to Top Packer:	4197.00 ft			Final 57000.00 lb
Depth to Bottom Packer:	ft			
Interval between Packers:	112.71 ft			
Tool Length:	132.71 ft			
Number of Packers:	2	Diameter: 6.75 inches		

Tool Comments:

Tool Description	Length (ft)	Serial No.	Position	Depth (ft)	Accum. Lengths
Shut-in tool	5.00			4182.00	
Hydraulic tool	5.00			4187.00	
Packer	5.00			4192.00	20.00 Bottom Of Top Packer
Packer	5.00			4197.00	
Anchor	3.00			4200.00	
change over sub	0.75			4200.75	
drill pipe	93.21			4293.96	
change over sub	0.75			4294.71	
anchor	10.00			4304.71	
Recorder	1.00	6651	Inside	4305.71	
Recorder	1.00	6749	Outside	4306.71	
bull plug	3.00			4309.71	112.71 Bottom Packers & Anchor

Total Tool Length: 132.71



DRILL STEM TEST REPORT

FLUID SUMMARY

Trans Pacific Oil Corporation

Dumler Unit A 1-14

100 South Main
 Suite 200
 Wichita, Kansas 67202+3735
 ATTN: Christina Goodrich

14/17S/26W/Ness

Job Ticket: 18792

DST#: 1

Test Start: 2011.10.31 @ 15:16:00

Mud and Cushion Information

Mud Type: Gel Chem
 Mud Weight: 9.00 lb/gal
 Viscosity: 50.00 sec/qt
 Water Loss: 6.80 in³
 Resistivity: ohm.m
 Salinity: 2800.00 ppm
 Filter Cake: 1.00 inches

Cushion Type:
 Cushion Length: ft
 Cushion Volume: bbl
 Gas Cushion Type:
 Gas Cushion Pressure: psig

Oil API: deg API
 Water Salinity: ppm

Recovery Information

Recovery Table

Length ft	Description	Volume bbl
15.00	Watery oil cut mud	0.219
0.00	Water 5% Oil 10% Mud 85%	0.000

Total Length: 15.00 ft Total Volume: 0.219 bbl

Num Fluid Samples: 0

Num Gas Bombs: 0

Serial #:

Laboratory Name:

Laboratory Location:

Recovery Comments:

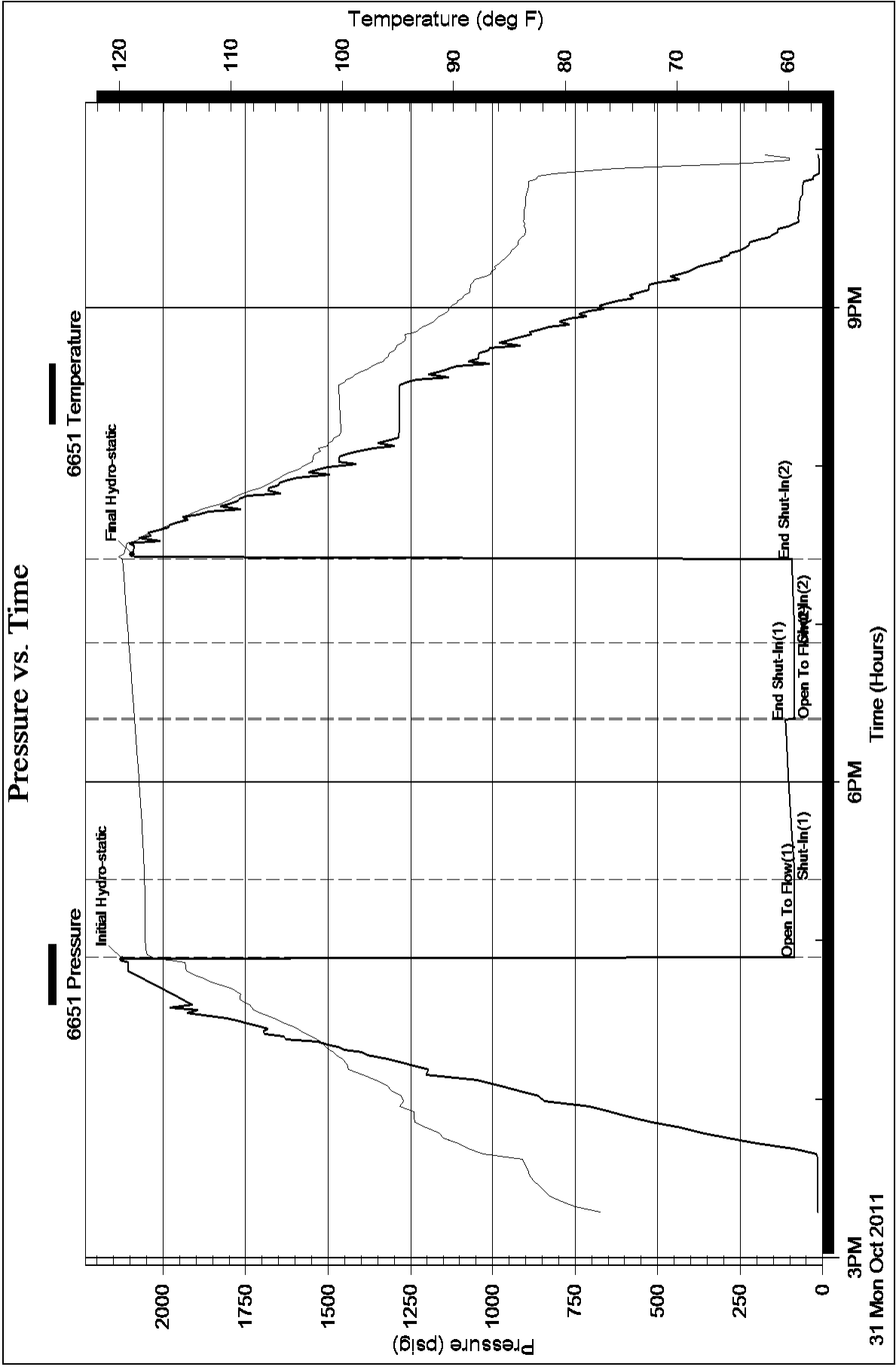
Serial #: 6651

Inside

Trans Pacific Oil Corporation

14/17S26W/Ness

DST Test Number: 1



Pressure vs. Time

