



**TRILOBITE  
TESTING, INC.**

# DRILL STEM TEST REPORT

Strata Exploration Inc.

**Jungemann#1-28**

P.O.Box 401  
Fairfield Il.62837

**28-27s-18w Kiowa Ks.**

ATTN: Jon Christensen

Job Ticket: 43969

**DST#: 1**

Test Start: 2011.09.19 @ 21:27:28

## GENERAL INFORMATION:

Formation: **Lansing A**

Deviated: No Whipstock: ft (KB)

Time Tool Opened: 23:40:28

Time Test Ended: 04:25:58

Test Type: Conventional Bottom Hole (Initial)

Tester: Gary Pevoteaux

Unit No: 56

**Interval: 4191.00 ft (KB) To 4208.00 ft (KB) (TVD)**

Reference Elevations: 2195.00 ft (KB)

Total Depth: 4208.00 ft (KB) (TVD)

2184.00 ft (CF)

Hole Diameter: 7.88 inches Hole Condition: Fair

KB to GR/CF: 11.00 ft

**Serial #: 8167 Inside**

Press @ Run Depth: 45.22 psig @ 4192.00 ft (KB)

Capacity: 8000.00 psig

Start Date: 2011.09.19

End Date:

2011.09.20

Last Calib.:

2011.09.20

Start Time: 21:27:33

End Time:

04:25:57

Time On Btm:

2011.09.19 @ 23:37:43

Time Off Btm:

2011.09.20 @ 02:17:13

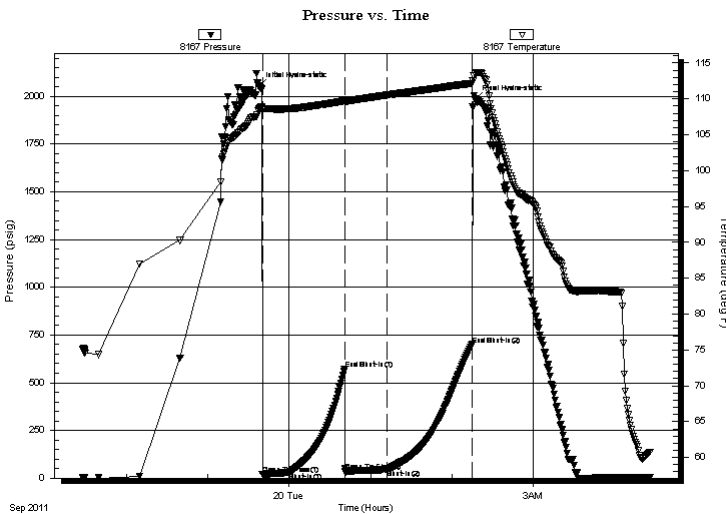
TEST COMMENT: IF: Fair blow .5 - 13".

IS: No blow .

FF: Weak blow . Slow increase to 5 1/2".

FS: No blow .

## PRESSURE SUMMARY



Time (Min.)	Pressure (psig)	Temp (deg F)	Annotation
0	2050.51	108.58	Initial Hydro-static
3	18.84	108.56	Open To Flow (1)
23	29.77	108.63	Shut-In(1)
63	571.38	109.75	End Shut-In(1)
64	33.81	109.67	Open To Flow (2)
95	45.22	110.53	Shut-In(2)
158	698.91	112.19	End Shut-In(2)
160	1983.02	113.53	Final Hydro-static

## Recovery

Length (ft)	Description	Volume (bbl)
60.00	SOCM 4%o 96%m	0.30
0.00	180 ft.of GIP	0.00

## Gas Rates

	Choke (inches)	Pressure (psig)	Gas Rate (Mcf/d)



**TRILOBITE  
TESTING, INC.**

# DRILL STEM TEST REPORT

**FLUID SUMMARY**

Strata Exploration Inc.

**Jungemann#1-28**

P.O.Box 401  
Fairfield Il.62837

**28-27s-18w Kiowa Ks.**

Job Ticket: 43969

**DST#: 1**

ATTN: Jon Christensen

Test Start: 2011.09.19 @ 21:27:28

## Mud and Cushion Information

Mud Type: Gel Chem

Cushion Type:

Oil API:

deg API

Mud Weight: 9.00 lb/gal

Cushion Length:

ft

Water Salinity:

6700 ppm

Viscosity: 49.00 sec/qt

Cushion Volume:

bbbl

Water Loss: 8.79 in<sup>3</sup>

Gas Cushion Type:

Resistivity: 0.00 ohm.m

Gas Cushion Pressure:

psig

Salinity: 6700.00 ppm

Filter Cake: 0.20 inches

## Recovery Information

Recovery Table

Length ft	Description	Volume bbbl
60.00	SOCM 4%o 96%m	0.295
0.00	180 ft.of GIP	0.000

Total Length: 60.00 ft      Total Volume: 0.295 bbl

Num Fluid Samples: 0

Num Gas Bombs: 0

Serial #: none

Laboratory Name:

Laboratory Location:

Recovery Comments:

