



**TRILOBITE TESTING, INC.**

# DRILL STEM TEST REPORT

Strata Exploration Inc.

**Jungemann#1-28**

P.O.Box 401  
Fairfield Il.62837

**28-27s-18w Kiowa Ks.**

ATTN: Jon Christensen

Job Ticket: 43972

**DST#: 4**

Test Start: 2011.09.23 @ 12:15:46

## GENERAL INFORMATION:

Formation: **Kinderhook**

Deviated: No Whipstock: ft (KB)

Time Tool Opened: 14:08:46

Time Test Ended: 20:07:46

Test Type: Conventional Bottom Hole (Reset)

Tester: Gary Pevoteaux

Unit No: 56

**Interval: 4792.00 ft (KB) To 4810.00 ft (KB) (TVD)**

Reference Elevations: 2195.00 ft (KB)

Total Depth: 4810.00 ft (KB) (TVD)

2184.00 ft (CF)

Hole Diameter: 7.88 inches Hole Condition: Poor

KB to GR/CF: 11.00 ft

**Serial #: 8167 Inside**

Press @RunDepth: 30.40 psig @ 4793.00 ft (KB)

Capacity: 8000.00 psig

Start Date: 2011.09.23

End Date: 2011.09.23

Last Calib.: 2011.09.23

Start Time: 12:15:51

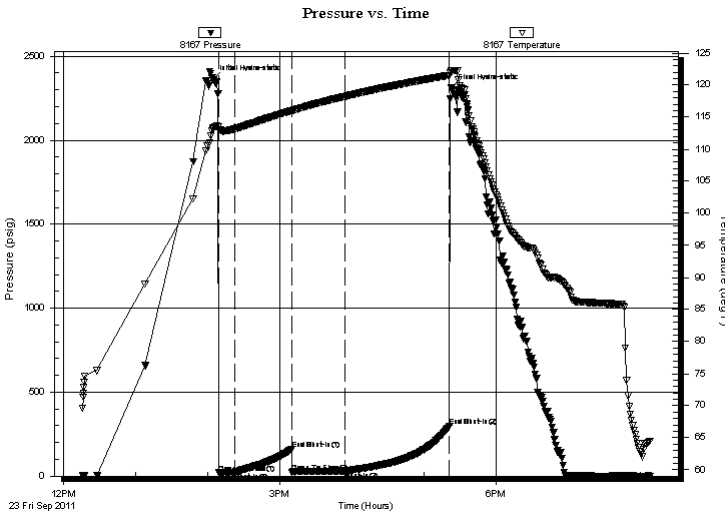
End Time: 20:07:45

Time On Btm: 2011.09.23 @ 14:04:16

Time Off Btm: 2011.09.23 @ 17:22:31

**TEST COMMENT:** IF:Weak blow . 1/2 - 2".  
IS:No blow .  
FF:Weak blow . 1 - 2 1/2".  
FS:No blow .

## PRESSURE SUMMARY



Time (Min.)	Pressure (psig)	Temp (deg F)	Annotation
0	2360.67	113.20	Initial Hydro-static
5	19.31	112.98	Open To Flow (1)
19	23.79	113.17	Shut-In(1)
66	159.58	116.01	End Shut-In(1)
66	23.28	116.00	Open To Flow (2)
110	30.40	118.22	Shut-In(2)
197	297.09	121.54	End Shut-In(2)
199	2310.02	122.29	Final Hydro-static

## Recovery

Length (ft)	Description	Volume (bbl)
60.00	SOCM <1% 99% m/clean oil @ top of tool	0.30
0.00	95 ft. of GIP	0.00

\* Recovery from multiple tests

## Gas Rates

Choke (inches)	Pressure (psig)	Gas Rate (Mcf/d)



**TRILOBITE  
TESTING, INC.**

# DRILL STEM TEST REPORT

**FLUID SUMMARY**

Strata Exploration Inc.

**Jungemann#1-28**

P.O.Box 401  
Fairfield Il.62837

**28-27s-18w Kiowa Ks.**

Job Ticket: 43972

**DST#: 4**

ATTN: Jon Christensen

Test Start: 2011.09.23 @ 12:15:46

## Mud and Cushion Information

Mud Type: Gel Chem

Cushion Type:

Oil API:

deg API

Mud Weight: 9.00 lb/gal

Cushion Length:

ft

Water Salinity:

8200 ppm

Viscosity: 56.00 sec/qt

Cushion Volume:

bbbl

Water Loss: 9.19 in<sup>3</sup>

Gas Cushion Type:

Resistivity: 0.00 ohm.m

Gas Cushion Pressure:

psig

Salinity: 8200.00 ppm

Filter Cake: 0.20 inches

## Recovery Information

Recovery Table

Length ft	Description	Volume bbbl
60.00	SOCM <1%o 99%m /clean oil@top of tool	0.295
0.00	95 ft.of GIP	0.000

Total Length: 60.00 ft      Total Volume: 0.295 bbl

Num Fluid Samples: 0

Num Gas Bombs: 0

Serial #: none

Laboratory Name:

Laboratory Location:

Recovery Comments:

