



**TRILOBITE
TESTING, INC.**

DRILL STEM TEST REPORT

Woolsey Operating Co.LLC

125 N.Market ,Ste.1000
Wichita Ks.67202

ATTN: Scott Alberg

33-33s-10w Barber Ks

Circle B-1

Job Ticket: 44013

DST#: 1

Test Start: 2011.10.24 @ 18:50:19

GENERAL INFORMATION:

Formation: **Miss.**

Deviated: No Whipstock: ft (KB)

Time Tool Opened: 21:00:49

Time Test Ended: 04:27:04

Test Type: Conventional Bottom Hole (Initial)

Tester: Gary Pevoteaux

Unit No: 56

Interval: 4582.00 ft (KB) To 4636.00 ft (KB) (TVD)

Reference Elevations: 1430.00 ft (KB)

Total Depth: 4636.00 ft (KB) (TVD)

1421.00 ft (CF)

Hole Diameter: 7.88 inches Hole Condition: Poor

KB to GR/CF: 9.00 ft

Serial #: 8167 Inside

Press @RunDepth: 315.08 psig @ 4583.00 ft (KB)

Capacity: 8000.00 psig

Start Date: 2011.10.24

End Date:

2011.10.25

Last Calib.: 2011.10.25

Start Time: 18:50:24

End Time:

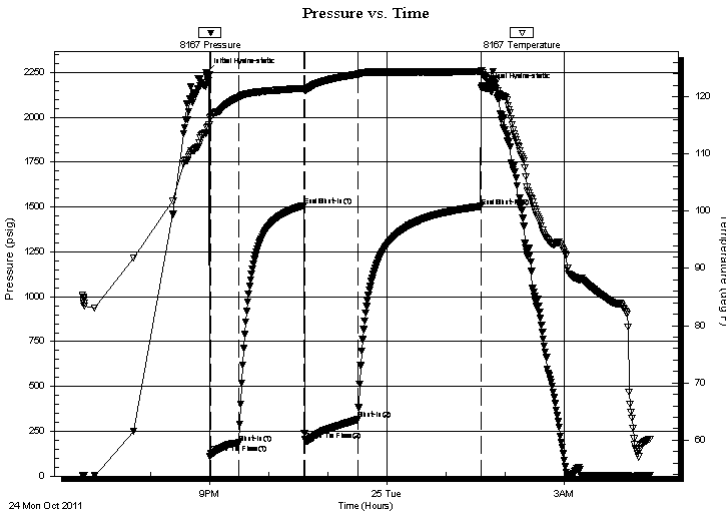
04:27:04

Time On Btm: 2011.10.24 @ 20:56:04

Time Off Btm: 2011.10.25 @ 01:37:34

TEST COMMENT: IF:Strong blow . B.O.B. in 3 1/2 mins.
IS:Weak blow . 3 - 5".
FF:Strong blow . B.O.B. in 3 mins.
FS:Strong blow . B.O.B.

PRESSURE SUMMARY



Time (Min.)	Pressure (psig)	Temp (deg F)	Annotation
0	2250.04	113.78	Initial Hydro-static
5	128.14	116.46	Open To Flow (1)
33	181.77	119.92	Shut-In(1)
100	1508.79	121.49	End Shut-In(1)
101	202.30	121.15	Open To Flow (2)
155	315.08	123.96	Shut-In(2)
280	1503.63	124.43	End Shut-In(2)
282	2166.38	123.91	Final Hydro-static

Recovery

Length (ft)	Description	Volume (bbl)
370.00	MW /w o specs 8% m 82% w	2.37
0.00	Rw .097 ohms @55deg	0.00
125.00	OCWM 3% o 45% w 52% m	1.75
155.00	OCWM 3% o 27% w 70% m	2.17
0.00	3050 ft. of GIP	0.00

Gas Rates

Choke (inches)	Pressure (psig)	Gas Rate (Mcf/d)



**TRILOBITE
TESTING, INC.**

DRILL STEM TEST REPORT

FLUID SUMMARY

Woolsey Operating Co.LLC

33-33s-10w Barber Ks

125 N.Market ,Ste.1000
Wichita Ks.67202

Circle B-1

Job Ticket: 44013

DST#: 1

ATTN: Scott Alberg

Test Start: 2011.10.24 @ 18:50:19

Mud and Cushion Information

Mud Type: Gel Chem

Cushion Type:

Oil API:

deg API

Mud Weight: 9.00 lb/gal

Cushion Length:

ft

Water Salinity: 104000 ppm

Viscosity: 45.00 sec/qt

Cushion Volume:

bbbl

Water Loss: 9.18 in³

Gas Cushion Type:

Resistivity: 0.00 ohm.m

Gas Cushion Pressure:

psig

Salinity: 4000.00 ppm

Filter Cake: 0.20 inches

Recovery Information

Recovery Table

Length ft	Description	Volume bbbl
370.00	MW /w o specs 8%m 82%w	2.366
0.00	Rw .097 ohms @55deg	0.000
125.00	OCWM 3%o 45%w 52%m	1.753
155.00	OCWM 3%o 27%w 70%m	2.174
0.00	3050 ft.of GIP	0.000

Total Length: 650.00 ft Total Volume: 6.293 bbl

Num Fluid Samples: 0

Num Gas Bombs: 0

Serial #: none

Laboratory Name:

Laboratory Location:

Recovery Comments: Slid tool 10 ft to btm

msummervill@woolseyco.com

