



DRILL STEM TEST REPORT

Prepared For: **Shelby Resources LLC.**

445 Union Blvd.Suite 208
Lakewood,Colorado 80228

ATTN: Keith R

9/17S/14W Barton

Beren Trust#1-9

Start Date: 2011.07.02 @ 09:40:00

End Date: 2011.07.02 @ 19:11:00

Job Ticket #: 16615 DST #: 1

Superior Testers Enterprises LLC
PO Box 138 Great Bend KS 67530
1-800-792-6902

Printed: 2011.07.03 @ 07:52:43



DRILL STEM TEST REPORT

TOOL DIAGRAM

Shelby Resources LLC.
 445 Union Blvd. Suite 208
 Lakewood, Colorado 80228
 ATTN: Keith R

Beren Trust#1-9
9/17S/14W Barton
 Job Ticket: 16615 **DST#: 1**
 Test Start: 2011.07.02 @ 09:40:00

Tool Information

Drill Pipe:	Length: 3189.00 ft	Diameter: 3.80 inches	Volume: 44.73 bbl	Tool Weight: 2000.00 lb
Heavy Wt. Pipe:	Length: 0.00 ft	Diameter: 0.00 inches	Volume: 0.00 bbl	Weight set on Packer: 20000.00 lb
Drill Collar:	Length: 213.21 ft	Diameter: 2.25 inches	Volume: 1.05 bbl	Weight to Pull Loose: 20000.00 lb
			<u>Total Volume: 45.78 bbl</u>	Tool Chased 0.00 ft
Drill Pipe Above KB:	14.21 ft			String Weight: Initial 66000.00 lb
Depth to Top Packer:	3416.00 ft			Final 77000.00 lb
Depth to Bottom Packer:	ft			
Interval between Packers:	53.52 ft			
Tool Length:	81.52 ft			
Number of Packers:	2	Diameter: 6.75 inches		

Tool Comments:

Tool Description	Length (ft)	Serial No.	Position	Depth (ft)	Accum. Lengths
Shut-In Tool	5.00			3393.00	
Hydraulic Tool	5.00			3398.00	
Jars	6.00			3404.00	
Safety Joint	2.00			3406.00	
Packer	5.00			3411.00	28.00 Bottom Of Top Packer
Packer	5.00			3416.00	
Perforations	5.00			3421.00	
Change Over Sub	0.75			3421.75	
Drill Pipe	32.02			3453.77	
Change Over Sub	0.75			3454.52	
Perforations	10.00			3464.52	
Recorder	1.00	6651	Inside	3465.52	
Recorder	1.00	6666	Outside	3466.52	
Bull Plug	3.00			3469.52	53.52 Bottom Packers & Anchor

Total Tool Length: 81.52



DRILL STEM TEST REPORT

FLUID SUMMARY

Shelby Resources LLC.
 445 Union Blvd. Suite 208
 Lakewood, Colorado 80228
 ATTN: Keith R

Beren Trust#1-9
9/17S/14W Barton
 Job Ticket: 16615 **DST#: 1**
 Test Start: 2011.07.02 @ 09:40:00

Mud and Cushion Information

Mud Type: Gel Chem	Cushion Type:	Oil API:	deg API
Mud Weight: 9.00 lb/gal	Cushion Length: ft	Water Salinity:	ppm
Viscosity: 53.00 sec/qt	Cushion Volume: bbl		
Water Loss: 10.20 in ³	Gas Cushion Type:		
Resistivity: ohm.m	Gas Cushion Pressure: psia		
Salinity: 5700.00 ppm			
Filter Cake: 1.00 inches			

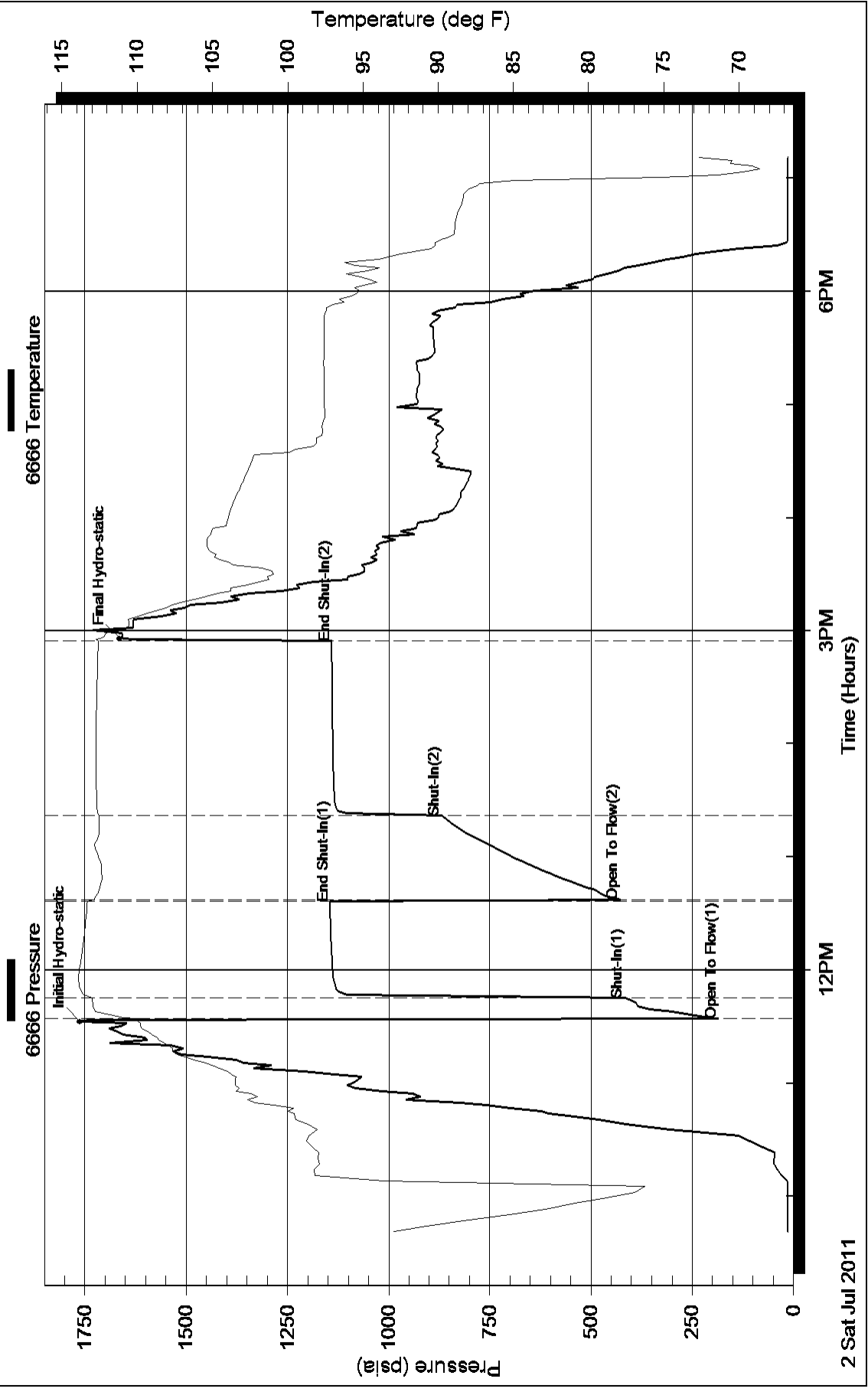
Recovery Information

Recovery Table

Length ft	Description	Volume bbl
128.00	Lightly Mud cut Oil	0.629
0.00	15% Mud 85% Oil	0.000
1799.00	Clean Gassy Oil	24.459
0.00	10% Gas 90% Oil	0.000
64.00	Lightly Oil and Mud cut Water	0.898
0.00	15% Oil 35% Mud 50% Water	0.000
64.00	Oil and Mud cut Water	0.898
0.00	10% Oil 10% Mud 80% Water	0.000
0.00	Gravity of Oil corrected w as 41	0.000
0.00	Chlorides were 61,000.0	0.000
0.00	Resistivity w as .24 @ 76 degrees	0.000

Total Length: 2055.00 ft Total Volume: 26.884 bbl
 Num Fluid Samples: 0 Num Gas Bombs: 0 Serial #:
 Laboratory Name: Laboratory Location:
 Recovery Comments:

Pressure vs. Time



Pressure vs. Time

