



**TRILOBITE
TESTING, INC.**

DRILL STEM TEST REPORT

Caerus Kansas LLC
 PO Box 1378
 Hays, Ks 67601
 ATTN: Herb Deines

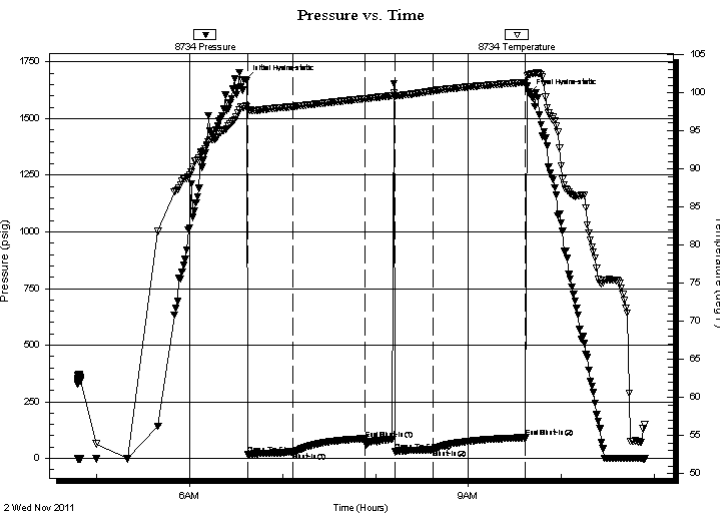
30-20-11 Barton, Ks
Soeken #30-11
 Job Ticket: 44726 **DST#: 1**
 Test Start: 2011.11.02 @ 04:47:26

GENERAL INFORMATION:

Formation: **Arbuckle**
 Deviated: No Whipstock: ft (KB)
 Time Tool Opened: 06:37:26
 Time Test Ended: 10:53:56
 Interval: **3336.00 ft (KB) To 3382.00 ft (KB) (TVD)**
 Total Depth: 3382.00 ft (KB) (TVD)
 Hole Diameter: 7.88 inches Hole Condition: Good
 Test Type: Conventional Bottom Hole (Initial)
 Tester: Brian Fairbank
 Unit No: 41
 Reference Elevations: 1810.00 ft (KB)
 1801.00 ft (CF)
 KB to GR/CF: 9.00 ft

Serial #: 8734 Outside
 Press @ Run Depth: 38.53 psig @ 3342.00 ft (KB) Capacity: 8000.00 psig
 Start Date: 2011.11.02 End Date: 2011.11.02 Last Calib.: 2011.11.02
 Start Time: 04:47:27 End Time: 10:53:56 Time On Btm: 2011.11.02 @ 06:35:56
 Time Off Btm: 2011.11.02 @ 09:39:26

TEST COMMENT: IFP - weak to good blow 1/4" - 7"
 ISI - no blow back
 FFP - no blow 15 min - flush - weak blow throughout 1 1/4"
 FSI - no blow back



PRESSURE SUMMARY

Time (Min.)	Pressure (psig)	Temp (deg F)	Annotation
0	1672.55	98.23	Initial Hydro-static
2	16.34	97.72	Open To Flow (1)
31	27.71	98.18	Shut-In(1)
77	86.07	99.21	End Shut-In(1)
97	32.60	99.52	Open To Flow (2)
122	38.53	100.25	Shut-In(2)
181	91.30	101.37	End Shut-In(2)
184	1610.97	102.39	Final Hydro-static

Recovery

Length (ft)	Description	Volume (bbl)
50.00	GOCM 20%G, 20%O, 60%M	0.70
0.00	40' GIP	0.00

Gas Rates

	Choke (inches)	Pressure (psig)	Gas Rate (Mcf/d)



**TRILOBITE
TESTING, INC.**

DRILL STEM TEST REPORT

FLUID SUMMARY

Caerus Kansas LLC

30-20-11 Barton, Ks

PO Box 1378
Hays, Ks 67601

Soeken #30-11

Job Ticket: 44726

DST#: 1

ATTN: Herb Deines

Test Start: 2011.11.02 @ 04:47:26

Mud and Cushion Information

Mud Type: Gel Chem

Cushion Type:

Oil API:

deg API

Mud Weight: 9.00 lb/gal

Cushion Length:

ft

Water Salinity:

ppm

Viscosity: 49.00 sec/qt

Cushion Volume:

bbbl

Water Loss: 9.19 in³

Gas Cushion Type:

Resistivity: ohm.m

Gas Cushion Pressure:

psig

Salinity: 4800.00 ppm

Filter Cake: inches

Recovery Information

Recovery Table

Length ft	Description	Volume bbbl
50.00	GOCM 20%G, 20%O, 60%M	0.701
0.00	40' GIP	0.000

Total Length: 50.00 ft Total Volume: 0.701 bbl

Num Fluid Samples: 0

Num Gas Bombs: 0

Serial #:

Laboratory Name:

Laboratory Location:

Recovery Comments:

