



**TRILOBITE  
TESTING, INC**

# DRILL STEM TEST REPORT

Caerus Kansas LLC

**Waters #30-42**

PO Box 1378  
Hays KS 67601

**30-24s-14w**

Job Ticket: 37495

**DST#: 1**

ATTN: Brian Karlin

Test Start: 2011.06.23 @ 07:09:17

## GENERAL INFORMATION:

Formation: **Arbuckle**

Deviated: No Whipstock: ft (KB)

Time Tool Opened: 10:01:32

Time Test Ended: 15:34:17

Test Type: Conventional Straddle

Tester: Chris Staats

Unit No: 34

**Interval: 4315.00 ft (KB) To 4400.00 ft (KB) (TVD)**

Reference Elevations: 1996.00 ft (KB)

Total Depth: 4450.00 ft (KB) (TVD)

1987.00 ft (CF)

Hole Diameter: 7.88 inches Hole Condition: Fair

KB to GR/CF: 9.00 ft

**Serial #: 8166 Outside**

Press @ Run Depth: 791.35 psig @ 4316.00 ft (KB)

Capacity: 8000.00 psig

Start Date: 2011.06.23

End Date: 2011.06.23

Last Calib.: 2011.06.23

Start Time: 07:09:22

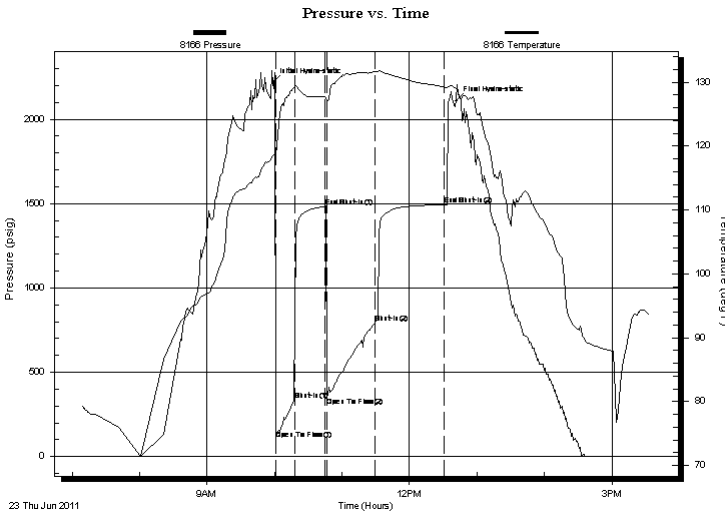
End Time: 15:34:16

Time On Btm: 2011.06.23 @ 09:58:32

Time Off Btm: 2011.06.23 @ 12:41:32

**TEST COMMENT:** IF: Strong blow BOB 2 min  
IS: Weak blow back  
FF: Strong blow BOB 3 min  
FS: No blow back

## PRESSURE SUMMARY



Time (Min.)	Pressure (psig)	Temp (deg F)	Annotation
0	2218.28	118.51	Initial Hydro-static
3	105.47	118.58	Open To Flow (1)
19	331.94	129.14	Shut-In(1)
46	1482.71	127.67	End Shut-In(1)
49	350.29	127.28	Open To Flow (2)
91	791.35	131.61	Shut-In(2)
152	1493.67	129.25	End Shut-In(2)
163	2109.72	128.93	Final Hydro-static

## Recovery

Length (ft)	Description	Volume (bbl)
1380.00	G M W OIL Spots 2% oil 30% mud 68%	w18.82
960.00	w m 10% mud 90% w ater	13.47

## Gas Rates

Choke (inches)	Pressure (psig)	Gas Rate (Mcf/d)



**TRILOBITE**  
**TESTING, INC**

# DRILL STEM TEST REPORT

Caerus Kansas LLC

**Waters #30-42**

PO Box 1378  
Hays KS 67601

**30-24s-14w**

Job Ticket: 37495

**DST#: 1**

ATTN: Brian Karlin

Test Start: 2011.06.23 @ 07:09:17

## GENERAL INFORMATION:

Formation: **Arbuckle**

Deviated: No Whipstock: ft (KB)

Time Tool Opened: 10:01:32

Time Test Ended: 15:34:17

Test Type: Conventional Straddle

Tester: Chris Staats

Unit No: 34

**Interval: 4315.00 ft (KB) To 4400.00 ft (KB) (TVD)**

Reference Elevations: 1996.00 ft (KB)

Total Depth: 4450.00 ft (KB) (TVD)

1987.00 ft (CF)

Hole Diameter: 7.88 inches Hole Condition: Fair

KB to GR/CF: 9.00 ft

**Serial #: 6773 Outside**

Press @ Run Depth: psig @ 4316.00 ft (KB)

Capacity: 8000.00 psig

Start Date: 2011.06.23 End Date: 2011.06.23

Last Calib.: 2011.06.23

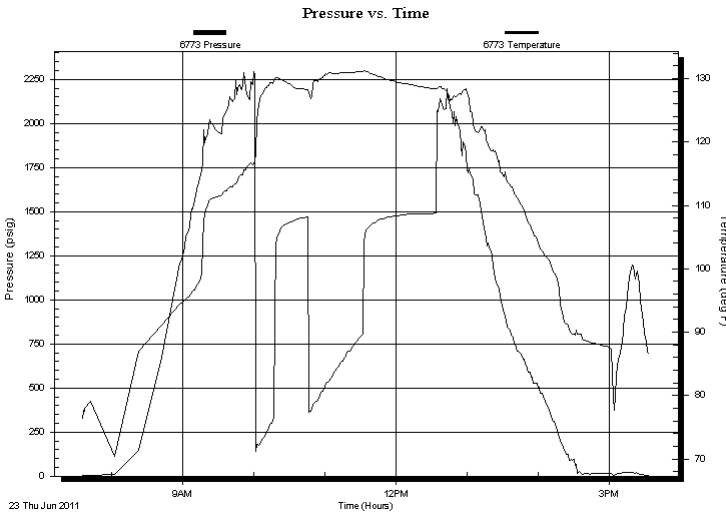
Start Time: 07:35:37 End Time: 15:34:01

Time On Btm:

Time Off Btm:

**TEST COMMENT:** IF: Strong blow BOB 2 min  
IS: Weak blow back  
FF: Strong blow BOB 3 min  
FS: No blow back

## PRESSURE SUMMARY



Time (Min.)	Pressure (psig)	Temp (deg F)	Annotation

## Recovery

Length (ft)	Description	Volume (bbl)
1380.00	G M W OIL Spots 2% oil 30% mud 68%	w18.82
960.00	w m 10% mud 90% w ater	13.47

## Gas Rates

Choke (inches)	Pressure (psig)	Gas Rate (Mcf/d)



**TRILOBITE  
TESTING, INC**

# DRILL STEM TEST REPORT

## FLUID SUMMARY

Caerus Kansas LLC

**Waters #30-42**

PO Box 1378  
Hays KS 67601

**30-24s-14w**

Job Ticket: 37495

**DST#: 1**

ATTN: Brian Karlin

Test Start: 2011.06.23 @ 07:09:17

### Mud and Cushion Information

Mud Type: Gel Chem

Cushion Type:

Oil API:

deg API

Mud Weight: 10.00 lb/gal

Cushion Length:

ft

Water Salinity:

ppm

Viscosity: 54.00 sec/qt

Cushion Volume:

bbbl

Water Loss: 10.19 in<sup>3</sup>

Gas Cushion Type:

Resistivity: 0.00 ohm.m

Gas Cushion Pressure:

psig

Salinity: 4000.00 ppm

Filter Cake: 0.02 inches

### Recovery Information

Recovery Table

Length ft	Description	Volume bbl
1380.00	G M W OIL Spots 2% oil 30% mud 68% w ater	18.820
960.00	w m 10% mud 90% w ater	13.466

Total Length: 2340.00 ft      Total Volume: 32.286 bbl

Num Fluid Samples: 0

Num Gas Bombs: 0

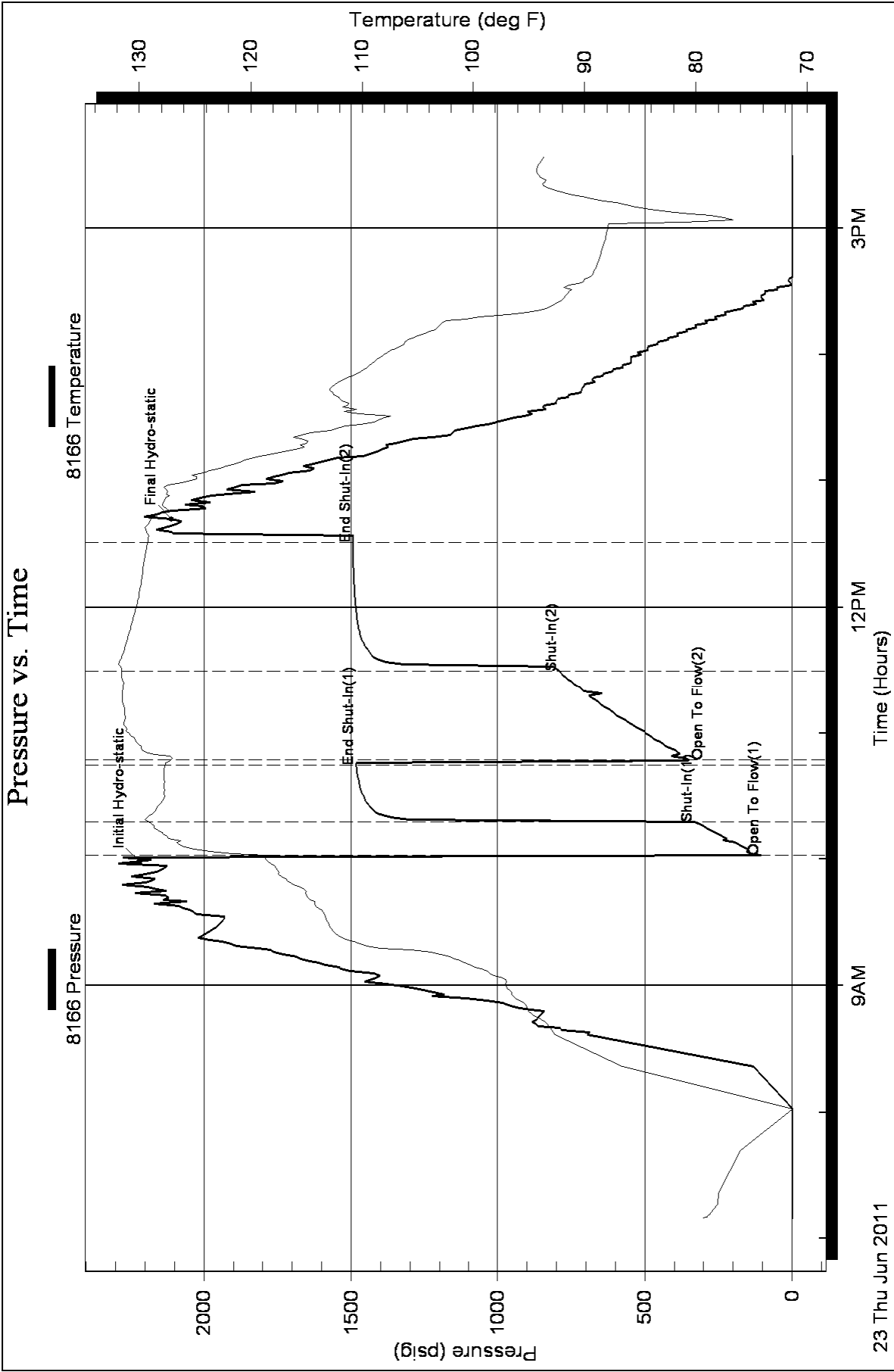
Serial #:

Laboratory Name:

Laboratory Location:

Recovery Comments:

### Pressure vs. Time



### Pressure vs. Time

