



**TRILOBITE  
TESTING, INC.**

# DRILL STEM TEST REPORT

Strata Exploration Inc.

**33-27s18w Kiowa Ks.**

P.O.Box 401  
Fairfield Il.62837

**Unruh#3-33**

Job Ticket: 44095

**DST#: 1**

ATTN: Jon Christensen

Test Start: 2012.01.03 @ 01:45:30

## GENERAL INFORMATION:

Formation: **Lansing A**

Deviated: No Whipstock: ft (KB)

Time Tool Opened: 05:09:30

Time Test Ended: 09:48:30

Test Type: Conventional Bottom Hole (Initial)

Tester: Gary Pevoteaux

Unit No: 56

**Interval: 4216.00 ft (KB) To 4232.00 ft (KB) (TVD)**

Reference Elevations: 2211.00 ft (KB)

Total Depth: 4232.00 ft (KB) (TVD)

2200.00 ft (CF)

Hole Diameter: 7.88 inches Hole Condition: Fair

KB to GR/CF: 11.00 ft

**Serial #: 8167 Inside**

Press @ Run Depth: 30.46 psig @ 4217.00 ft (KB)

Capacity: 8000.00 psig

Start Date: 2012.01.03

End Date:

2012.01.03

Last Calib.:

2012.01.03

Start Time: 01:45:31

End Time:

09:48:30

Time On Btm:

2012.01.03 @ 05:07:45

Time Off Btm:

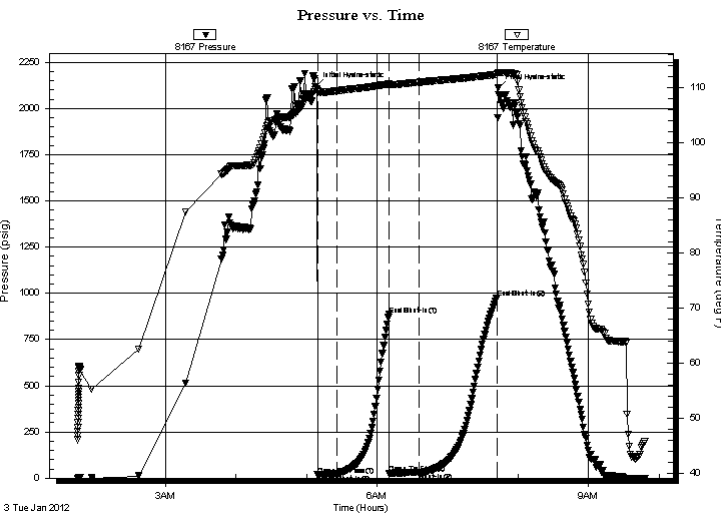
2012.01.03 @ 07:43:15

TEST COMMENT: IF:Weak blow . 1/2 - 2 1/2".

IS:No blow .

FF:Weak blow . 1/2 - 1 1/2".

FS:No blow .



## PRESSURE SUMMARY

Time (Min.)	Pressure (psig)	Temp (deg F)	Annotation
0	2120.06	109.69	Initial Hydro-static
2	18.20	109.26	Open To Flow (1)
19	22.17	109.47	Shut-In(1)
63	884.58	110.71	End Shut-In(1)
63	24.01	110.54	Open To Flow (2)
88	30.46	111.03	Shut-In(2)
155	976.08	112.42	End Shut-In(2)
156	2109.99	112.76	Final Hydro-static

## Recovery

Length (ft)	Description	Volume (bbl)
10.00	Mud w oil specs	0.05
0.00	70 ft.of GIP	0.00

## Gas Rates

	Choke (inches)	Pressure (psig)	Gas Rate (Mcf/d)



**TRILOBITE  
TESTING, INC.**

# DRILL STEM TEST REPORT

**FLUID SUMMARY**

Strata Exploration Inc.

**33-27s18w Kiowa Ks.**

P.O.Box 401  
Fairfield Il.62837

**Unruh#3-33**

Job Ticket: 44095

**DST#: 1**

ATTN: Jon Christensen

Test Start: 2012.01.03 @ 01:45:30

## Mud and Cushion Information

Mud Type: Gel Chem

Cushion Type:

Oil API:

deg API

Mud Weight: 9.00 lb/gal

Cushion Length:

ft

Water Salinity:

6400 ppm

Viscosity: 52.00 sec/qt

Cushion Volume:

bbbl

Water Loss: 8.78 in<sup>3</sup>

Gas Cushion Type:

Resistivity: 0.00 ohm.m

Gas Cushion Pressure:

psig

Salinity: 6400.00 ppm

Filter Cake: 0.20 inches

## Recovery Information

Recovery Table

Length ft	Description	Volume bbbl
10.00	Mud w oil specs	0.049
0.00	70 ft.of GIP	0.000

Total Length: 10.00 ft      Total Volume: 0.049 bbl

Num Fluid Samples: 0

Num Gas Bombs: 0

Serial #: none

Laboratory Name:

Laboratory Location:

Recovery Comments:

Serial #: 8167

Inside

Strata Exploration Inc.

Unruh#3-33

DST Test Number: 1

