



**TRILOBITE TESTING, INC.**

# DRILL STEM TEST REPORT

Dow ning-Nelson Oil Co Inc

**4-20s-20w-Pawnee**

Po Box 1019  
Hays Ks 67601

**Melvin Jennings 1-4**

ATTN: Ron Nelson

Job Ticket: 46391

**DST#: 1**

Test Start: 2012.02.07 @ 17:05:38

## GENERAL INFORMATION:

Formation: **Miss**

Deviated: No Whipstock: ft (KB)

Time Tool Opened: 19:02:08

Time Test Ended: 00:45:38

Test Type: Conventional Straddle (Initial)

Tester: Jeff Brown

Unit No: 44

**Interval: 4348.00 ft (KB) To 4359.00 ft (KB) (TVD)**

Reference Elevations: 2139.00 ft (KB)

Total Depth: 4457.00 ft (KB) (TVD)

2131.00 ft (CF)

Hole Diameter: 7.88 inches Hole Condition: Good

KB to GR/CF: 8.00 ft

**Serial #: 8321 Inside**

Press @ Run Depth: 145.85 psig @ 4350.00 ft (KB)

Capacity: 8000.00 psig

Start Date: 2012.02.07

End Date:

2012.02.08

Last Calib.:

2012.02.08

Start Time:

17:05:39

End Time:

00:45:38

Time On Btm:

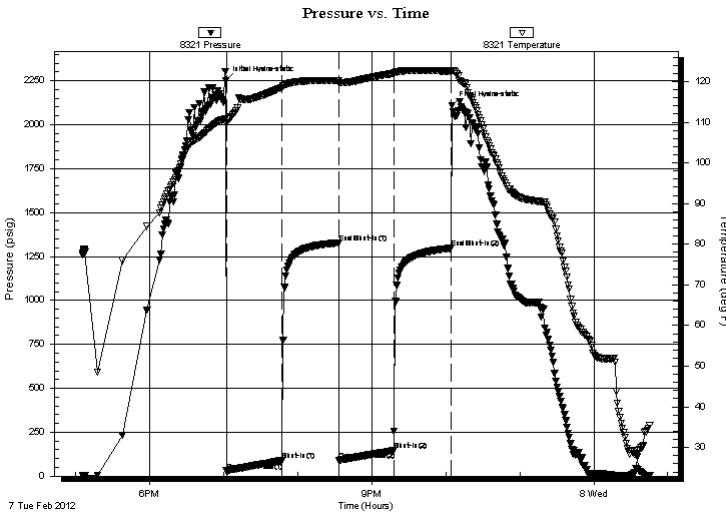
2012.02.07 @ 19:01:38

Time Off Btm:

2012.02.07 @ 22:05:08

**TEST COMMENT:** IFP-Good blow BOB in 32 1/2 min  
ISI-Dead no blow back  
FFP-Good blow BOB in 38 min  
FSI-Dead no blow back

## PRESSURE SUMMARY



Time (Min.)	Pressure (psig)	Temp (deg F)	Annotation
0	2248.07	110.81	Initial Hydro-static
1	29.09	109.58	Open To Flow (1)
46	87.92	118.58	Shut-In(1)
92	1327.44	120.17	End Shut-In(1)
92	91.51	119.73	Open To Flow (2)
136	145.85	122.01	Shut-In(2)
183	1296.88	122.54	End Shut-In(2)
184	2109.71	122.75	Final Hydro-static

## Recovery

Length (ft)	Description	Volume (bbl)
243.00	MW 10%M90%W	3.13
20.00	WM 20%W80%M	0.28

## Gas Rates

	Choke (inches)	Pressure (psig)	Gas Rate (Mcf/d)





**TRILOBITE  
TESTING, INC.**

# DRILL STEM TEST REPORT

**FLUID SUMMARY**

Dow ning-Nelson Oil Co Inc

**4-20s-20w-Pawnee**

Po Box 1019  
Hays Ks 67601

**Melvin Jennings 1-4**

Job Ticket: 46391

**DST#: 1**

ATTN: Ron Nelson

Test Start: 2012.02.07 @ 17:05:38

## Mud and Cushion Information

Mud Type: Gel Chem

Cushion Type:

Oil API:

deg API

Mud Weight: 9.00 lb/gal

Cushion Length:

ft

Water Salinity:

ppm

Viscosity: 60.00 sec/qt

Cushion Volume:

bbbl

Water Loss: 7.99 in<sup>3</sup>

Gas Cushion Type:

Resistivity: ohm.m

Gas Cushion Pressure:

psig

Salinity: 3500.00 ppm

Filter Cake: inches

## Recovery Information

Recovery Table

Length ft	Description	Volume bbbl
243.00	MW 10%M90%W	3.126
20.00	WM 20%W80%M	0.281

Total Length: 263.00 ft      Total Volume: 3.407 bbl

Num Fluid Samples: 0

Num Gas Bombs: 0

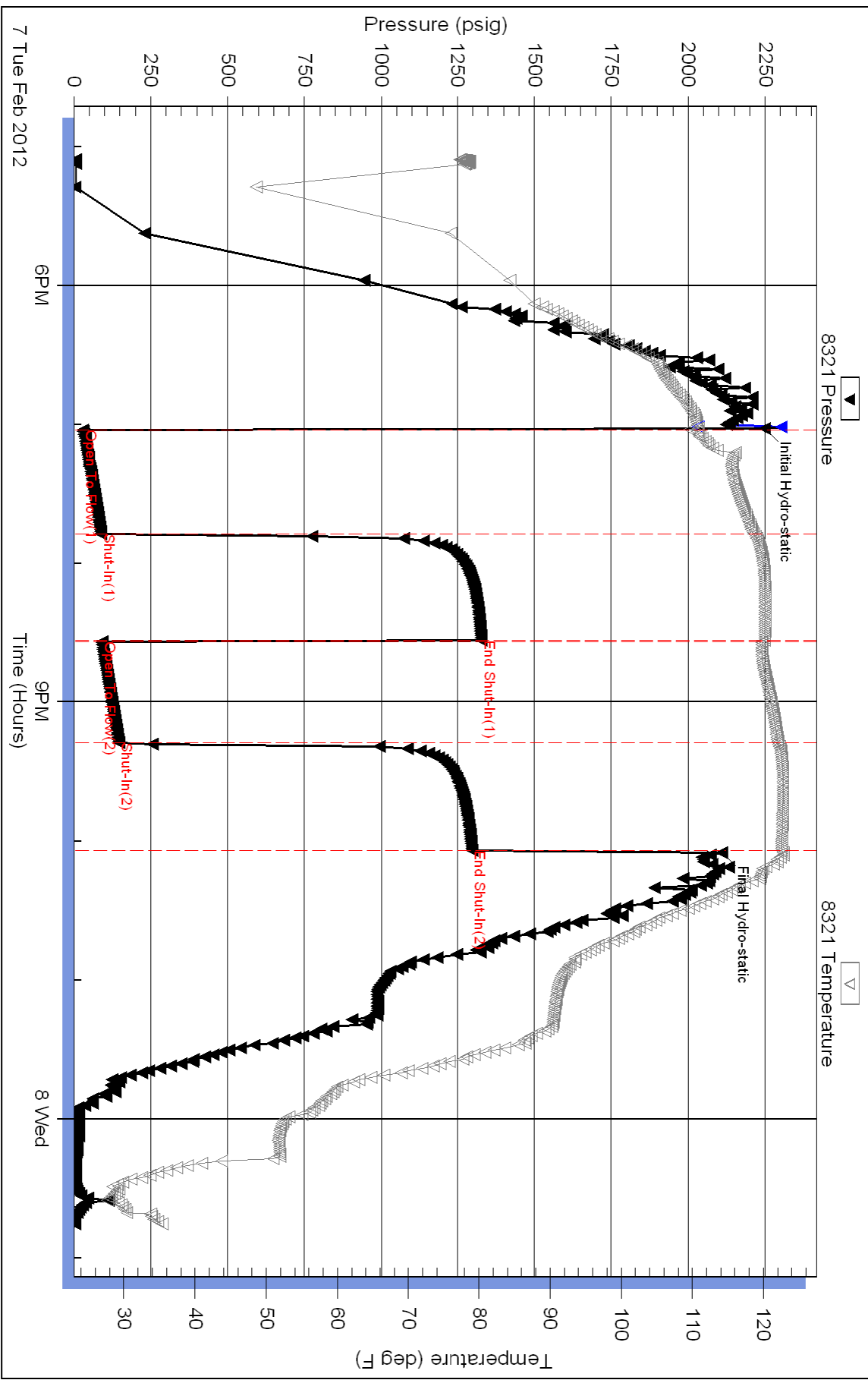
Serial #:

Laboratory Name:

Laboratory Location:

Recovery Comments:

### Pressure vs. Time



Serial #: 8653

Below (Stratton) Jng-Nelson Oil Co Inc

Melvin Jennings 1-4

DST Test Number: 1

