



TRILOBITE TESTING, INC.

DRILL STEM TEST REPORT

Berexco LLC

27-27s-24w

2020 N Bramblewood
Wichita KS 67206

Roesener #1-27

ATTN: Evan Mayhew / Mac Arm

Job Ticket: 44124

DST#: 1

Test Start: 2012.01.14 @ 02:39:16

GENERAL INFORMATION:

Formation: **Winfield**

Deviated: No Whipstock: ft (KB)

Time Tool Opened: 09:12:16

Time Test Ended: 15:39:31

Test Type: Conventional Bottom Hole (Initial)

Tester: Chris Staats

Unit No: 47

Interval: 2672.00 ft (KB) To 2720.00 ft (KB) (TVD)

Reference Elevations: 2534.00 ft (KB)

Total Depth: 2720.00 ft (KB) (TVD)

2521.00 ft (CF)

Hole Diameter: 7.88 inches Hole Condition: Fair

KB to GR/CF: 13.00 ft

Serial #: 8166 Outside

Press @ Run Depth: 184.56 psig @ 2673.00 ft (KB)

Capacity: 8000.00 psig

Start Date: 2012.01.14

End Date:

2012.01.14

Last Calib.: 2012.01.14

Start Time: 02:39:21

End Time:

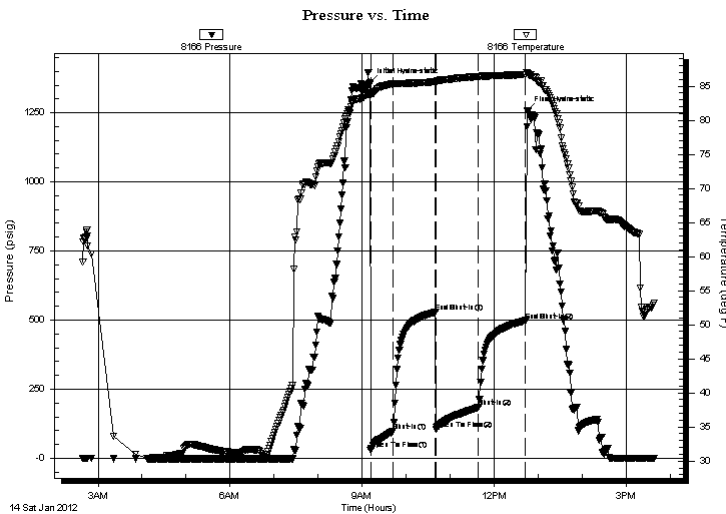
15:39:31

Time On Btm: 2012.01.14 @ 09:10:16

Time Off Btm: 2012.01.14 @ 12:45:01

TEST COMMENT: IF: Strong blow BOB 7 min
IS: Weak blow back
FF: Strong blow BOB 7 min
FS: Weak blow back

PRESSURE SUMMARY



Time (Min.)	Pressure (psig)	Temp (deg F)	Annotation
0	1357.60	83.86	Initial Hydro-static
2	32.51	83.86	Open To Flow (1)
32	97.03	85.35	Shut-In(1)
90	527.99	85.69	End Shut-In(1)
91	105.30	85.65	Open To Flow (2)
149	184.56	86.42	Shut-In(2)
213	497.59	86.73	End Shut-In(2)
215	1257.52	87.03	Final Hydro-static

Recovery

Length (ft)	Description	Volume (bbl)
0.00	540' GIP	0.00
360.00	G,M,W 10% gas 20% mud 70% w ater	1.77

Gas Rates

	Choke (inches)	Pressure (psig)	Gas Rate (Mcf/d)



TRILOBITE TESTING, INC.

DRILL STEM TEST REPORT

Berexco LLC

27-27s-24w

2020 N Bramblewood
Wichita KS 67206

Roesener #1-27

Job Ticket: 44124

DST#: 1

ATTN: Evan Mayhew / Mac Arm

Test Start: 2012.01.14 @ 02:39:16

GENERAL INFORMATION:

Formation: **Winfield**

Deviated: No Whipstock: ft (KB)

Time Tool Opened: 09:12:16

Time Test Ended: 15:39:31

Test Type: Conventional Bottom Hole (Initial)

Tester: Chris Staats

Unit No: 47

Interval: **2672.00 ft (KB) To 2720.00 ft (KB) (TVD)**

Reference Elevations: 2534.00 ft (KB)

Total Depth: 2720.00 ft (KB) (TVD)

2521.00 ft (CF)

Hole Diameter: 7.88 inches Hole Condition: Fair

KB to GR/CF: 13.00 ft

Serial #: **6773** Outside

Press@RunDepth: psig @ 2673.00 ft (KB)

Start Date: 2012.01.14

End Date:

2012.01.14

Capacity: 8000.00 psig

Last Calib.:

2012.01.14

Start Time: 02:44:34

End Time:

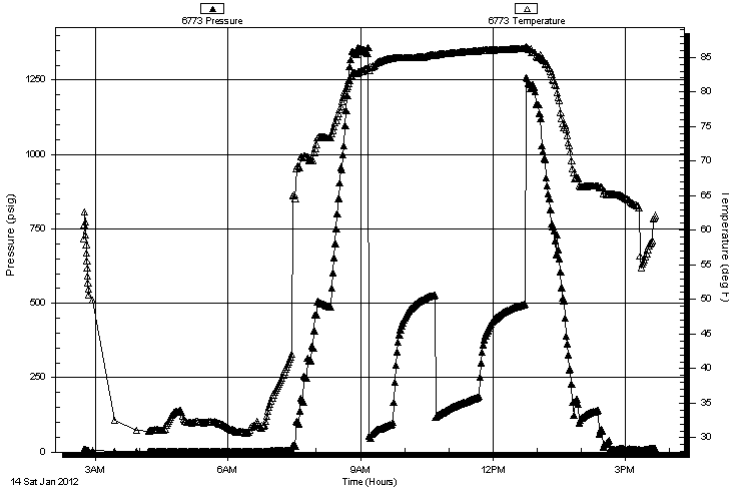
15:40:44

Time On Btm:

Time Off Btm:

TEST COMMENT: IF: Strong blow BOB 7 min
IS: Weak blow back
FF: Strong blow BOB 7 min
FS: Weak blow back

Pressure vs. Time



PRESSURE SUMMARY

Time (Min.)	Pressure (psig)	Temp (deg F)	Annotation
-------------	-----------------	--------------	------------

Recovery

Length (ft)	Description	Volume (bbl)
0.00	540' GIP	0.00
360.00	G,M,W 10% gas 20% mud 70% w ater	1.77

Gas Rates

	Choke (inches)	Pressure (psig)	Gas Rate (Mcf/d)
--	----------------	-----------------	------------------



**TRILOBITE
TESTING, INC.**

DRILL STEM TEST REPORT

FLUID SUMMARY

Berexco LLC

27-27s-24w

2020 N Bramblewood
Wichita KS 67206

Roesener #1-27

Job Ticket: 44124

DST#: 1

ATTN: Evan Mayhew / Mac Arm

Test Start: 2012.01.14 @ 02:39:16

Mud and Cushion Information

Mud Type: Gel Chem

Cushion Type:

Oil API:

deg API

Mud Weight: 10.00 lb/gal

Cushion Length:

ft

Water Salinity:

ppm

Viscosity: 30.00 sec/qt

Cushion Volume:

bbbl

Water Loss: in³

Gas Cushion Type:

Resistivity: 0.00 ohm.m

Gas Cushion Pressure:

psig

Salinity: 125.00 ppm

Filter Cake: 0.02 inches

Recovery Information

Recovery Table

Length ft	Description	Volume bbl
0.00	540' GIP	0.000
360.00	G,M,W 10% gas 20% mud 70% water	1.770

Total Length: 360.00 ft Total Volume: 1.770 bbl

Num Fluid Samples: 0

Num Gas Bombs: 0

Serial #:

Laboratory Name:

Laboratory Location:

Recovery Comments:

