



DRILL STEM TEST REPORT

Prepared For: **Downing-Nelson Oil Co Inc**

PO Box1019
Hays KS 67601

ATTN: Al Downing

Urban #1-9

9-16s-17w Rush,KS

Start Date: 2012.02.11 @ 10:10:53

End Date: 2012.02.11 @ 16:58:47

Job Ticket #: 46841 DST #: 1

Trilobite Testing, Inc

PO Box 362 Hays, KS 67601

ph: 785-625-4778 fax: 785-625-5620

Printed: 2012.02.20 @ 14:27:19



TRILOBITE TESTING, INC

DRILL STEM TEST REPORT

Dow ning-Nelson Oil Co Inc

9-16s-17w Rush,KS

PO Box 1019
Hays KS 67601

Urban #1-9

Job Ticket: 46841

DST#: 1

ATTN: Al Dow ning

Test Start: 2012.02.11 @ 10:10:53

GENERAL INFORMATION:

Formation: **Plattsmouth**

Deviated: No Whipstock: ft (KB)

Time Tool Opened: 12:30:18

Time Test Ended: 16:58:47

Test Type: Conventional Bottom Hole (Initial)

Tester: Ray Schw ager

Unit No: 42

Interval: 3123.00 ft (KB) To 3140.00 ft (KB) (TVD)

Reference Elevations: 1953.00 ft (KB)

Total Depth: 3140.00 ft (KB) (TVD)

1945.00 ft (CF)

Hole Diameter: 7.88 inches Hole Condition: Fair

KB to GR/CF: 8.00 ft

Serial #: 6625 Inside

Press @RunDepth: 34.49 psig @ 3124.00 ft (KB)

Capacity: 8000.00 psig

Start Date: 2012.02.11

End Date:

2012.02.11

Last Calib.:

2012.02.11

Start Time: 10:10:53

End Time:

16:58:47

Time On Btm:

2012.02.11 @ 12:24:18

Time Off Btm:

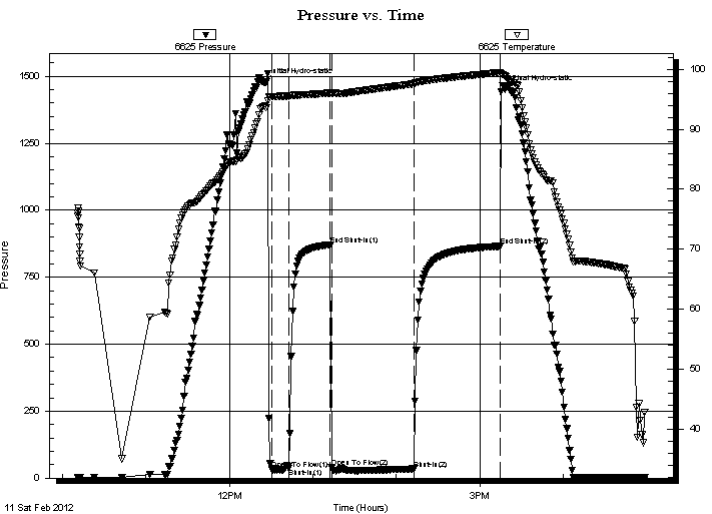
2012.02.11 @ 15:17:47

TEST COMMENT: 15-IFP-strg bl , GTS in 12 min

30-ISIP-no bl

60-FFP-strg bl GTS

60-FSIP-no bl



PRESSURE SUMMARY

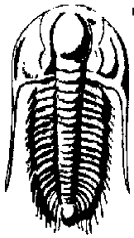
Time (Min.)	Pressure (psig)	Temp (deg F)	Annotation
0	1477.30	93.75	Initial Hydro-static
6	32.99	95.45	Open To Flow (1)
19	36.32	95.51	Shut-In(1)
48	871.17	96.03	End Shut-In(1)
49	38.63	96.02	Open To Flow (2)
108	34.49	97.57	Shut-In(2)
170	865.63	99.46	End Shut-In(2)
174	1452.36	98.83	Final Hydro-static

Recovery

Length (ft)	Description	Volume (bbl)
10.00	MGO 10%G20%M70%O	0.14
60.00	MGO 10%G10%M80%O	0.84

Gas Rates

	Choke (inches)	Pressure (psig)	Gas Rate (Mcf/d)
First Gas Rate	0.25	5.00	30.78
Last Gas Rate	0.25	1.00	24.43
Max. Gas Rate	0.25	5.00	30.78



TRILOBITE TESTING, INC

DRILL STEM TEST REPORT

Dow ning-Nelson Oil Co Inc

9-16s-17w Rush,KS

PO Box 1019
Hays KS 67601

Urban #1-9

Job Ticket: 46841

DST#: 1

ATTN: Al Dow ning

Test Start: 2012.02.11 @ 10:10:53

GENERAL INFORMATION:

Formation: **Plattsmouth**

Deviated: No Whipstock: ft (KB)

Time Tool Opened: 12:30:18

Time Test Ended: 16:58:47

Interval: **3123.00 ft (KB) To 3140.00 ft (KB) (TVD)**

Total Depth: 3140.00 ft (KB) (TVD)

Hole Diameter: 7.88 inches Hole Condition: Fair

Test Type: Conventional Bottom Hole (Initial)

Tester: Ray Schw ager

Unit No: 42

Reference Elevations: 1953.00 ft (KB)

1945.00 ft (CF)

KB to GR/CF: 8.00 ft

Serial #: 8700 Outside

Press @ Run Depth: psig @ 3124.00 ft (KB)

Start Date: 2012.02.11

End Date:

2012.02.11

Start Time: 10:11:51

End Time:

16:58:15

Capacity: 8000.00 psig

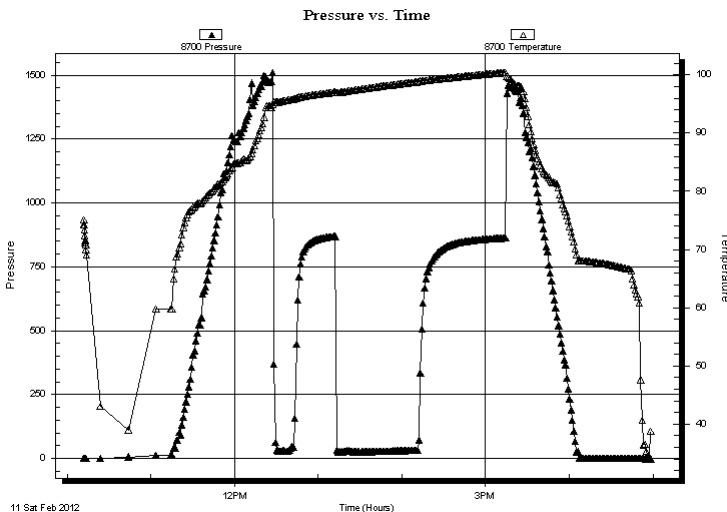
Last Calib.: 2012.02.11

Time On Btm:

Time Off Btm:

TEST COMMENT: 15-IFP-strg bl , GTS in 12 min
30-ISIP-no bl
60-FFP-strg bl GTS
60-FSIP-no bl

PRESSURE SUMMARY



Time (Min.)	Pressure (psig)	Temp (deg F)	Annotation

Recovery

Length (ft)	Description	Volume (bbl)
10.00	MGO 10%G20%M70%O	0.14
60.00	MGO 10%G10%M80%O	0.84

Gas Rates

	Choke (inches)	Pressure (psig)	Gas Rate (Mcf/d)
First Gas Rate	0.25	5.00	30.78
Last Gas Rate	0.25	1.00	24.43
Max. Gas Rate	0.25	5.00	30.78



**TRILOBITE
TESTING, INC**

DRILL STEM TEST REPORT

TOOL DIAGRAM

Dow ning-Nelson Oil Co Inc

9-16s-17w Rush,KS

PO Box1019
Hays KS 67601

Urban #1-9

Job Ticket: 46841

DST#: 1

ATTN: Al Dow ning

Test Start: 2012.02.11 @ 10:10:53

Tool Information

Drill Pipe:	Length: 3133.00 ft	Diameter: 3.80 inches	Volume: 43.95 bbl	Tool Weight: 2200.00 lb
Heavy Wt. Pipe:	Length: 0.00 ft	Diameter: 0.00 inches	Volume: 0.00 bbl	Weight set on Packer: 25000.00 lb
Drill Collar:	Length: 0.00 ft	Diameter: 0.00 inches	Volume: 0.00 bbl	Weight to Pull Loose: 70000.00 lb
			<u>Total Volume: 43.95 bbl</u>	Tool Chased 3.00 ft
Drill Pipe Above KB:	31.00 ft			String Weight: Initial 50000.00 lb
Depth to Top Packer:	3123.00 ft			Final 52000.00 lb
Depth to Bottom Packer:	ft			
Interval betw een Packers:	17.00 ft			
Tool Length:	38.00 ft			
Number of Packers:	2	Diameter: 6.75 inches		
Tool Comments:				

Tool Description	Length (ft)	Serial No.	Position	Depth (ft)	Accum. Lengths
------------------	-------------	------------	----------	------------	----------------

Change Over Sub	1.00			3103.00	
Shut In Tool	5.00			3108.00	
Hydraulic tool	5.00			3113.00	
Packer	5.00			3118.00	21.00 Bottom Of Top Packer
Packer	5.00			3123.00	
Stubb	1.00			3124.00	
Recorder	0.00	6625	Inside	3124.00	
Recorder	0.00	8700	Outside	3124.00	
Perforations	13.00			3137.00	
Bullnose	3.00			3140.00	17.00 Bottom Packers & Anchor
Total Tool Length:	38.00				



TRILOBITE
TESTING, INC

DRILL STEM TEST REPORT

FLUID SUMMARY

Dow ning-Nelson Oil Co Inc

9-16s-17w Rush,KS

PO Box 1019
Hays KS 67601

Urban #1-9

Job Ticket: 46841

DST#: 1

ATTN: Al Dow ning

Test Start: 2012.02.11 @ 10:10:53

Mud and Cushion Information

Mud Type: Gel Chem

Cushion Type:

Oil API:

deg API

Mud Weight: 9.00 lb/gal

Cushion Length: ft

Water Salinity: ppm

Viscosity: 50.00 sec/qt

Cushion Volume: bbl

Water Loss: 8.06 in³

Gas Cushion Type:

Resistivity: ohm.m

Gas Cushion Pressure: psig

Salinity: 2800.00 ppm

Filter Cake: 1.00 inches

Recovery Information

Recovery Table

Length ft	Description	Volume bbl
10.00	MGO 10%G20%M70%O	0.140
60.00	MGO 10%G10%M80%O	0.842

Total Length: 70.00 ft Total Volume: 0.982 bbl

Num Fluid Samples: 0

Num Gas Bombs: 0

Serial #:

Laboratory Name:

Laboratory Location:

Recovery Comments:



**TRILOBITE
TESTING, INC.**

DRILL STEM TEST REPORT

GAS RATES

Dow ning-Nelson Oil Co Inc

9-16s-17w Rush,KS

PO Box1019
Hays KS 67601

Urban #1-9

Job Ticket: 46841

DST#: 1

ATTN: Al Dow ning

Test Start: 2012.02.11 @ 10:10:53

Gas Rates Information

Temperature: 59 (deg F)
Relative Density: 0.65
Z Factor: 0.8

Gas Rates Table

Flow Period	Elapsed Time	Choke (inches)	Pressure (psig)	Gas Rate (Mcf/d)
2	10	0.25	5.00	30.78
2	10	0.25	5.00	30.78
2	10	0.25	5.00	30.78
2	20	0.25	3.00	27.60
2	30	0.25	1.00	24.43
2	40	0.25	1.00	24.43

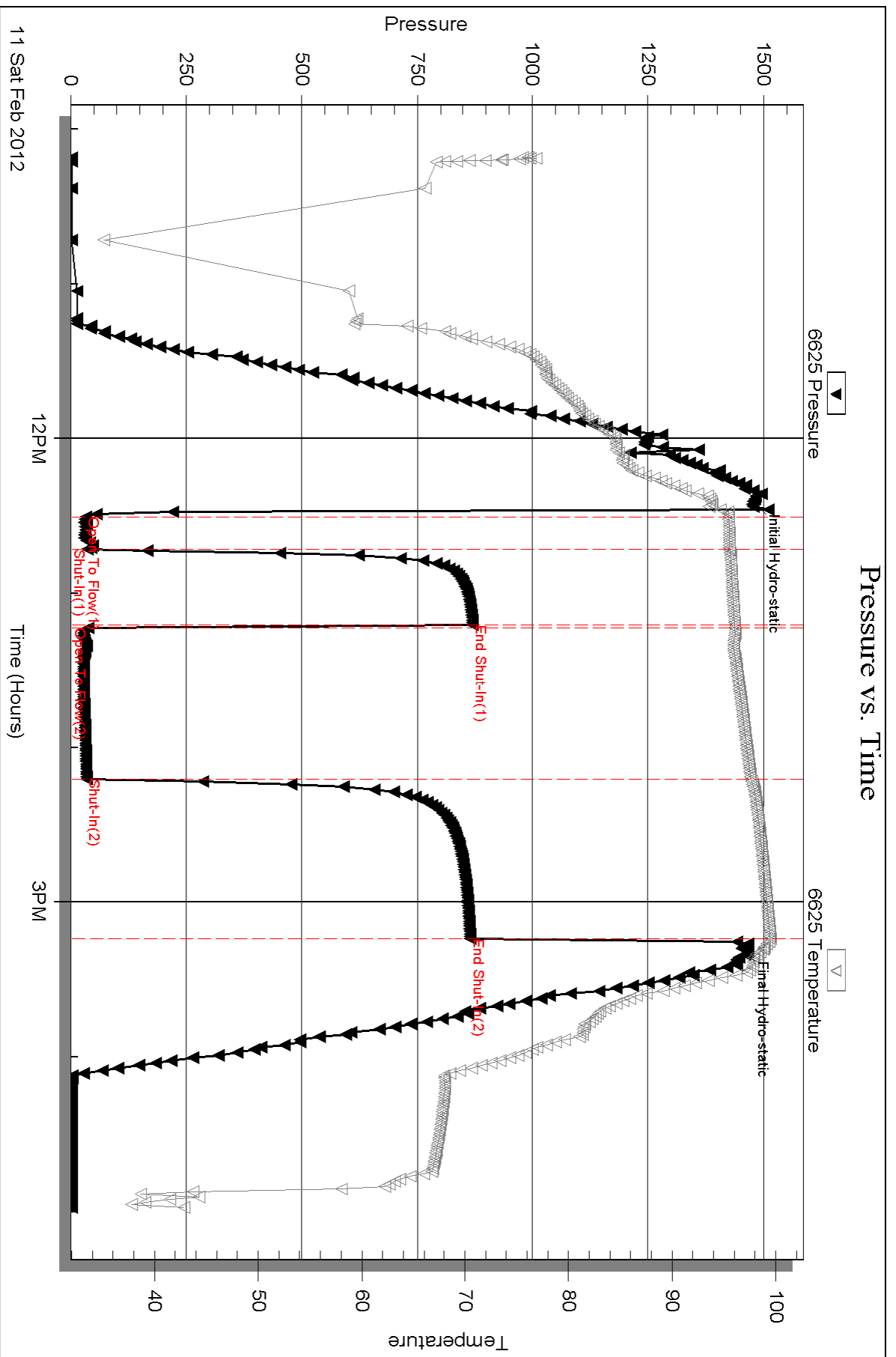
Serial #: 6625

Inside

Dow nung-Nelson Oil Co Inc

Urban #1-9

DST Test Number: 1



Triobite Testing, Inc

Ref. No: 46841

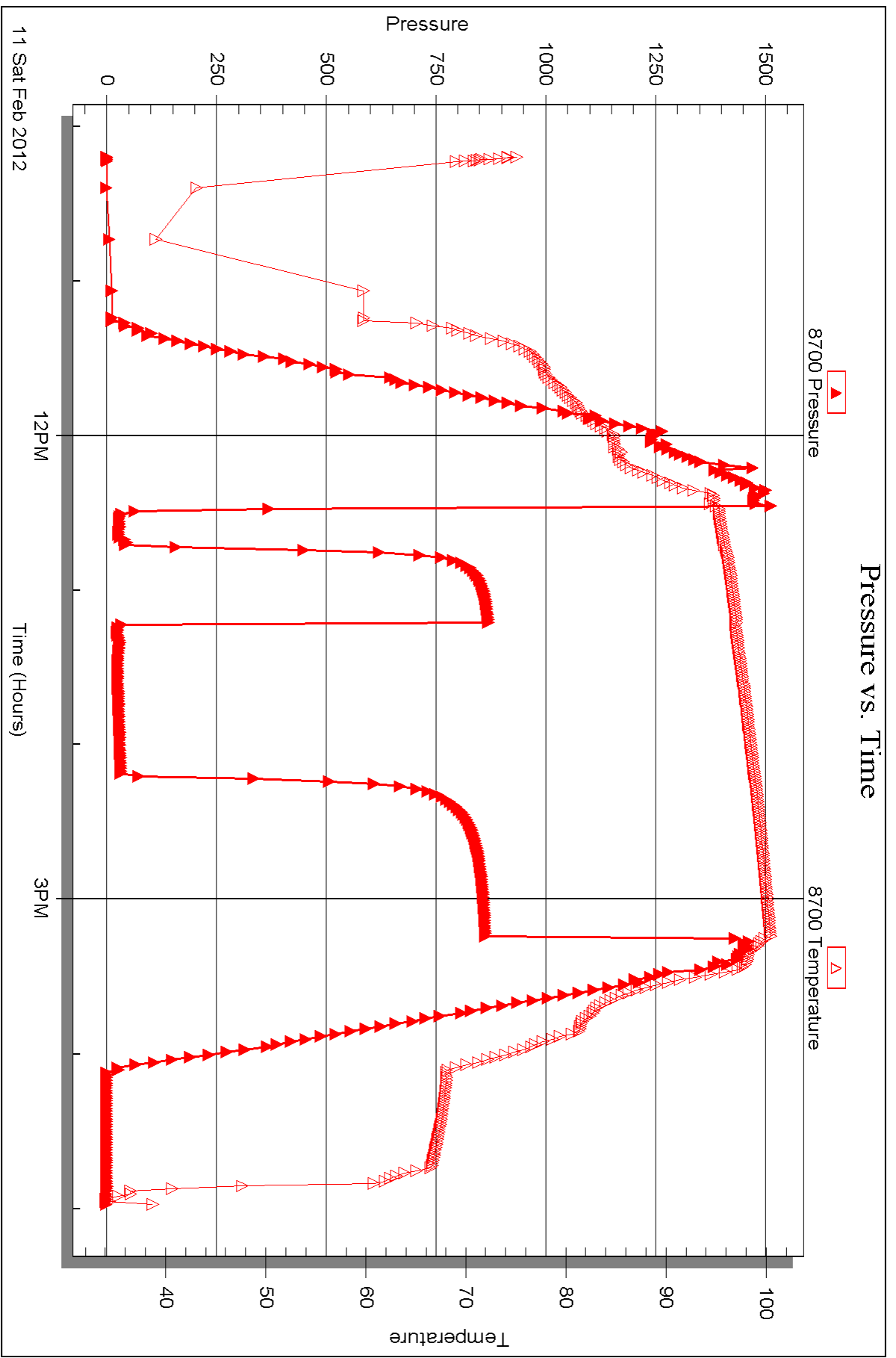
Printed: 2012.02.20 @ 14:27:21

Serial #: 8700

Outside Dow nting-Nelson Oil Co Inc

Urban #1-9

DST Test Number: 1



Triobite Testing, Inc

Ref. No: 46841

Printed: 2012.02.20 @ 14:27:22



DRILL STEM TEST REPORT

Prepared For: **Downing-Nelson Oil Co Inc**

PO Box1019
Hays KS 67601

ATTN: Al Downing

Urban #1-9

9-16s-17w Rush,KS

Start Date: 2012.02.12 @ 16:05:11

End Date: 2012.02.12 @ 21:45:05

Job Ticket #: 46842 DST #: 2

Trilobite Testing, Inc

PO Box 362 Hays, KS 67601

ph: 785-625-4778 fax: 785-625-5620

Printed: 2012.02.20 @ 14:25:02



TRILOBITE TESTING, INC

DRILL STEM TEST REPORT

Dow ning-Nelson Oil Co Inc

9-16s-17w Rush,KS

PO Box 1019
Hays KS 67601

Urban #1-9

Job Ticket: 46842

DST#: 2

ATTN: Al Dow ning

Test Start: 2012.02.12 @ 16:05:11

GENERAL INFORMATION:

Formation: **LKC H-J**

Deviated: No Whipstock: ft (KB)

Time Tool Opened: 18:00:36

Time Test Ended: 21:45:05

Test Type: Conventional Bottom Hole (Reset)

Tester: Ray Schw ager

Unit No: 42

Interval: 3356.00 ft (KB) To 3430.00 ft (KB) (TVD)

Reference Elevations: 1953.00 ft (KB)

Total Depth: 3430.00 ft (KB) (TVD)

1945.00 ft (CF)

Hole Diameter: 7.88 inches Hole Condition: Fair

KB to GR/CF: 8.00 ft

Serial #: 6625 Inside

Press @RunDepth: 24.17 psig @ 3362.00 ft (KB)

Capacity: 8000.00 psig

Start Date: 2012.02.12 End Date: 2012.02.12

Last Calib.: 2012.02.12

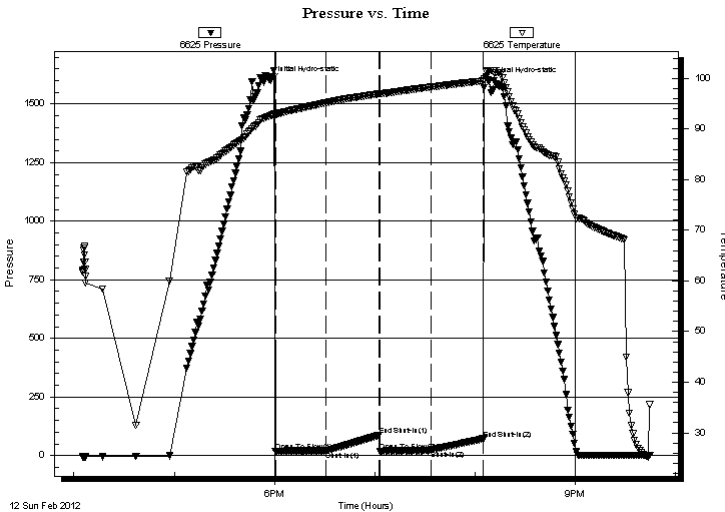
Start Time: 16:05:11 End Time: 21:45:05

Time On Btm: 2012.02.12 @ 17:57:36

Time Off Btm: 2012.02.12 @ 20:08:36

TEST COMMENT: 30-IFP-w k bl 1/4"to3/4"bl
30-ISIP-no bl
30-FFP-w k bl 1/4"to 3/4"bl
30-FSIP-no bl

PRESSURE SUMMARY



Time (Min.)	Pressure (psig)	Temp (deg F)	Annotation
0	1600.22	92.61	Initial Hydro-static
3	17.28	92.81	Open To Flow (1)
33	18.94	95.16	Shut-In(1)
65	87.84	96.93	End Shut-In(1)
66	17.89	96.94	Open To Flow (2)
96	24.17	98.29	Shut-In(2)
128	72.18	99.49	End Shut-In(2)
131	1594.52	101.58	Final Hydro-static

Recovery

Length (ft)	Description	Volume (bbl)
0.00	110'GIP	0.00
10.00	SO&GCM 5%G4%O91%M	0.14

* Recovery from multiple tests

Gas Rates

Choke (inches)	Pressure (psig)	Gas Rate (Mcf/d)



**TRILOBITE
TESTING, INC**

DRILL STEM TEST REPORT

TOOL DIAGRAM

Dow ning-Nelson Oil Co Inc

9-16s-17w Rush,KS

PO Box 1019
Hays KS 67601

Urban #1-9

Job Ticket: 46842

DST#: 2

ATTN: Al Dow ning

Test Start: 2012.02.12 @ 16:05:11

Tool Information

Drill Pipe:	Length: 3357.00 ft	Diameter: 3.80 inches	Volume: 47.09 bbl	Tool Weight: 2200.00 lb
Heavy Wt. Pipe:	Length: 0.00 ft	Diameter: 0.00 inches	Volume: 0.00 bbl	Weight set on Packer: 25000.00 lb
Drill Collar:	Length: 0.00 ft	Diameter: 0.00 inches	Volume: 0.00 bbl	Weight to Pull Loose: 65000.00 lb
			<u>Total Volume: 47.09 bbl</u>	Tool Chased 0.00 ft
Drill Pipe Above KB:	22.00 ft			String Weight: Initial 56000.00 lb
Depth to Top Packer:	3356.00 ft			Final 56000.00 lb
Depth to Bottom Packer:	ft			
Interval betw een Packers:	74.00 ft			
Tool Length:	95.00 ft			
Number of Packers:	2	Diameter: 6.75 inches		

Tool Comments:

Tool Description	Length (ft)	Serial No.	Position	Depth (ft)	Accum. Lengths
------------------	-------------	------------	----------	------------	----------------

Change Over Sub	1.00			3336.00	
Shut In Tool	5.00			3341.00	
Hydraulic tool	5.00			3346.00	
Packer	5.00			3351.00	21.00 Bottom Of Top Packer
Packer	5.00			3356.00	
Stubb	1.00			3357.00	
Perforations	5.00			3362.00	
Recorder	0.00	6625	Inside	3362.00	
Recorder	0.00	8700	Outside	3362.00	
Blank Spacing	65.00			3427.00	
Bullnose	3.00			3430.00	74.00 Bottom Packers & Anchor

Total Tool Length: 95.00



**TRILOBITE
TESTING, INC**

DRILL STEM TEST REPORT

FLUID SUMMARY

Dow ning-Nelson Oil Co Inc

9-16s-17w Rush,KS

PO Box1019
Hays KS 67601

Urban #1-9

Job Ticket: 46842

DST#: 2

ATTN: Al Dow ning

Test Start: 2012.02.12 @ 16:05:11

Mud and Cushion Information

Mud Type: Gel Chem

Cushion Type:

Oil API:

deg API

Mud Weight: 9.00 lb/gal

Cushion Length: ft

Water Salinity: ppm

Viscosity: 52.00 sec/qt

Cushion Volume: bbl

Water Loss: 8.10 in³

Gas Cushion Type:

Resistivity: ohm.m

Gas Cushion Pressure: psig

Salinity: 4000.00 ppm

Filter Cake: 1.00 inches

Recovery Information

Recovery Table

Length ft	Description	Volume bbl
0.00	110'GIP	0.000
10.00	SO&GCM 5%G4%O91%M	0.140

Total Length: 10.00 ft Total Volume: 0.140 bbl

Num Fluid Samples: 0

Num Gas Bombs: 0

Serial #:

Laboratory Name:

Laboratory Location:

Recovery Comments:

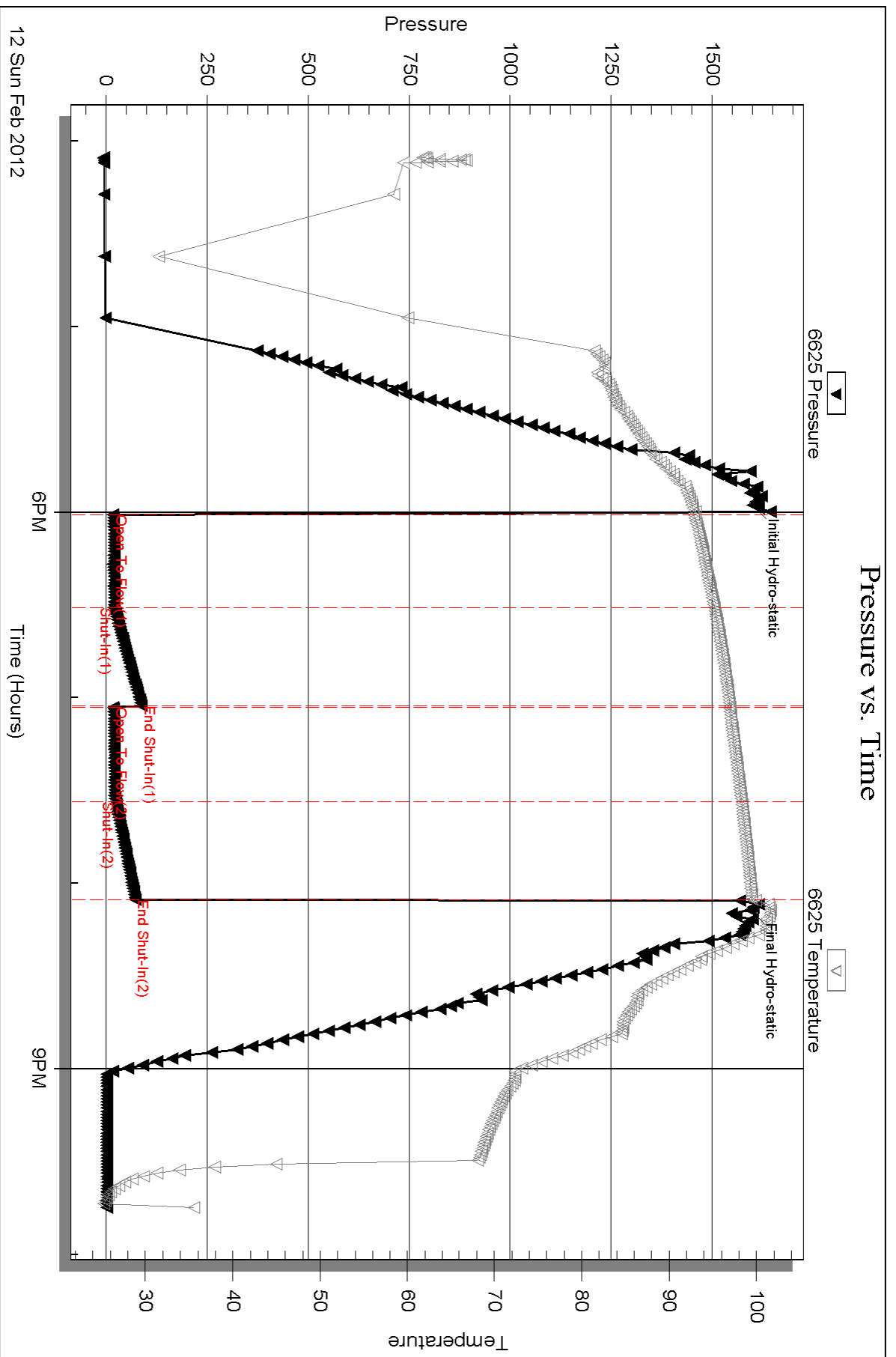
Serial #: 6625

Inside

Downing-Nelson Oil Co Inc

Urban #1-9

DST Test Number: 2



Triobite Testing, Inc

Ref. No: 46842

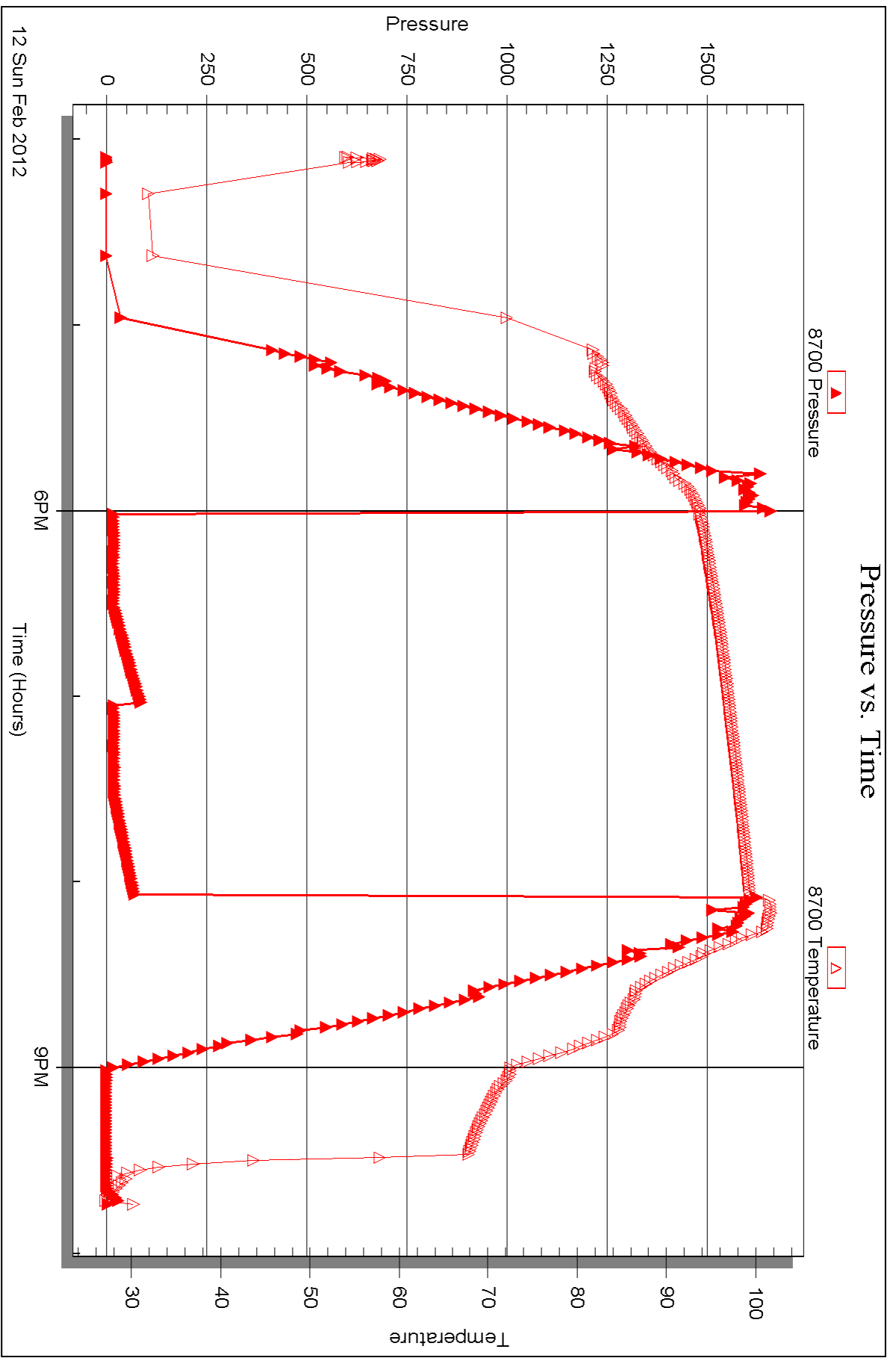
Printed: 2012.02.20 @ 14:25:04

Serial #: 8700

Outside Dow nung-Nelson Oil Co Inc

Urban #1-9

DST Test Number: 2



Triobite Testing, Inc

Ref. No: 46842

Printed: 2012.02.20 @ 14:25:05



DRILL STEM TEST REPORT

Prepared For: **Downing-Nelson Oil Co Inc**

PO Box1019
Hays KS 67601

ATTN: Al Downing

Urban #1-9

9-16s-17w Rush,KS

Start Date: 2012.02.13 @ 09:00:50

End Date: 2012.02.13 @ 16:32:14

Job Ticket #: 46843 DST #: 3

Trilobite Testing, Inc

PO Box 362 Hays, KS 67601

ph: 785-625-4778 fax: 785-625-5620

Printed: 2012.02.20 @ 14:26:37



TRILOBITE TESTING, INC

DRILL STEM TEST REPORT

Dow ning-Nelson Oil Co Inc

9-16s-17w Rush,KS

PO Box 1019
Hays KS 67601

Urban #1-9

Job Ticket: 46843

DST#: 3

ATTN: Al Dow ning

Test Start: 2012.02.13 @ 09:00:50

GENERAL INFORMATION:

Formation: **Congl Sd**
 Deviated: No Whipstock: ft (KB)
 Time Tool Opened: 11:06:45
 Time Test Ended: 16:32:14
 Interval: **3460.00 ft (KB) To 3525.00 ft (KB) (TVD)**
 Total Depth: 3525.00 ft (KB) (TVD)
 Hole Diameter: 7.88 inches Hole Condition: Fair
 Test Type: Conventional Bottom Hole (Reset)
 Tester: Ray Schw ager
 Unit No: 42
 Reference Elevations: 1953.00 ft (KB)
 1945.00 ft (CF)
 KB to GR/CF: 8.00 ft

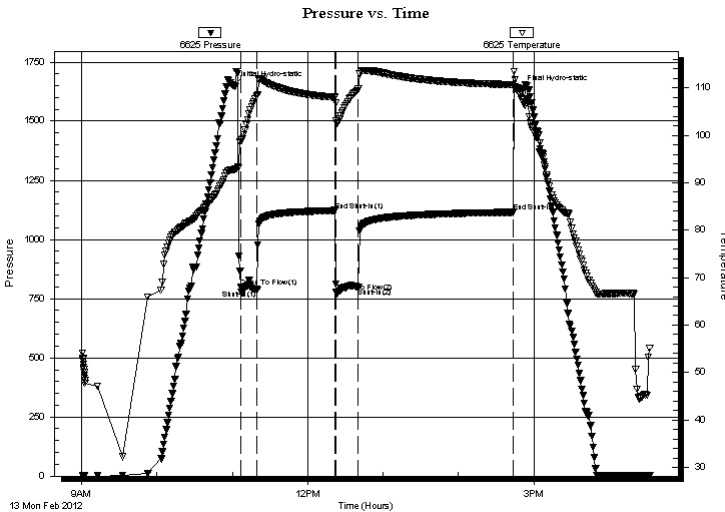
Serial #: 6625

Inside

Press @RunDepth: 797.16 psig @ 3466.00 ft (KB) Capacity: 8000.00 psig
 Start Date: 2012.02.13 End Date: 2012.02.13 Last Calib.: 2012.02.13
 Start Time: 09:00:50 End Time: 16:32:14 Time On Btm: 2012.02.13 @ 11:01:15
 Time Off Btm: 2012.02.13 @ 14:48:44

TEST COMMENT: 15-IFP-strg bl GTS in 2 min
 60-ISIP-1" bl bk
 20-FFP-GTS
 120-FSIP-1" bl bk

PRESSURE SUMMARY



Time (Min.)	Pressure (psig)	Temp (deg F)	Annotation
0	1648.99	92.76	Initial Hydro-static
6	798.50	98.97	Open To Flow (1)
19	786.99	108.32	Shut-In(1)
81	1122.53	108.02	End Shut-In(1)
82	776.95	103.08	Open To Flow (2)
99	797.16	109.71	Shut-In(2)
222	1115.55	110.67	End Shut-In(2)
228	1632.76	108.81	Final Hydro-static

Recovery

Length (ft)	Description	Volume (bbl)
50.00	mud	0.70

* Recovery from multiple tests

Gas Rates

	Choke (inches)	Pressure (psig)	Gas Rate (Mcf/d)
First Gas Rate	0.75	240.00	3973.69
Last Gas Rate	0.75	280.00	4598.49
Max. Gas Rate	0.75	280.00	4598.49



**TRILOBITE
TESTING, INC**

DRILL STEM TEST REPORT

TOOL DIAGRAM

Dow ning-Nelson Oil Co Inc

9-16s-17w Rush,KS

PO Box 1019
Hays KS 67601

Urban #1-9

Job Ticket: 46843

DST#: 3

ATTN: Al Dow ning

Test Start: 2012.02.13 @ 09:00:50

Tool Information

Drill Pipe:	Length: 3452.00 ft	Diameter: 3.80 inches	Volume: 48.42 bbl	Tool Weight: 2200.00 lb
Heavy Wt. Pipe:	Length: 0.00 ft	Diameter: 0.00 inches	Volume: 0.00 bbl	Weight set on Packer: 25000.00 lb
Drill Collar:	Length: 0.00 ft	Diameter: 0.00 inches	Volume: 0.00 bbl	Weight to Pull Loose: 70000.00 lb
			<u>Total Volume: 48.42 bbl</u>	Tool Chased 0.00 ft
Drill Pipe Above KB:	13.00 ft			String Weight: Initial 58000.00 lb
Depth to Top Packer:	3460.00 ft			Final 58000.00 lb
Depth to Bottom Packer:	ft			
Interval betw een Packers:	65.00 ft			
Tool Length:	86.00 ft			
Number of Packers:	2	Diameter: 6.75 inches		

Tool Comments:

Tool Description	Length (ft)	Serial No.	Position	Depth (ft)	Accum. Lengths
------------------	-------------	------------	----------	------------	----------------

Change Over Sub	1.00			3440.00	
Shut In Tool	5.00			3445.00	
Hydraulic tool	5.00			3450.00	
Packer	5.00			3455.00	21.00 Bottom Of Top Packer
Packer	5.00			3460.00	
Stubb	1.00			3461.00	
Perforations	5.00			3466.00	
Recorder	0.00	6625	Inside	3466.00	
Recorder	0.00	8700	Outside	3466.00	
Blank Spacing	33.00			3499.00	
Perforations	23.00			3522.00	
Bullnose	3.00			3525.00	65.00 Bottom Packers & Anchor

Total Tool Length: 86.00



TRILOBITE
TESTING, INC

DRILL STEM TEST REPORT

FLUID SUMMARY

Dow ning-Nelson Oil Co Inc

9-16s-17w Rush,KS

PO Box 1019
Hays KS 67601

Urban #1-9

Job Ticket: 46843

DST#: 3

ATTN: Al Dow ning

Test Start: 2012.02.13 @ 09:00:50

Mud and Cushion Information

Mud Type: Gel Chem

Cushion Type:

Oil API:

deg API

Mud Weight: 9.00 lb/gal

Cushion Length: ft

Water Salinity: ppm

Viscosity: 50.00 sec/qt

Cushion Volume: bbl

Water Loss: 9.11 in³

Gas Cushion Type:

Resistivity: ohm.m

Gas Cushion Pressure: psig

Salinity: 5800.00 ppm

Filter Cake: 1.00 inches

Recovery Information

Recovery Table

Length ft	Description	Volume bbl
50.00	mud	0.701

Total Length: 50.00 ft Total Volume: 0.701 bbl

Num Fluid Samples: 0

Num Gas Bombs: 0

Serial #:

Laboratory Name:

Laboratory Location:

Recovery Comments:



**TRILOBITE
TESTING, INC.**

DRILL STEM TEST REPORT

GAS RATES

Dow ning-Nelson Oil Co Inc

9-16s-17w Rush,KS

PO Box1019
Hays KS 67601

Urban #1-9

Job Ticket: 46843

DST#: 3

ATTN: Al Dow ning

Test Start: 2012.02.13 @ 09:00:50

Gas Rates Information

Temperature: 59 (deg F)
Relative Density: 0.65
Z Factor: 0.8

Gas Rates Table

Flow Period	Elapsed Time	Choke (inches)	Pressure (psig)	Gas Rate (Mcf/d)
1	5	0.75	240.00	3973.69
1	5	0.75	240.00	3973.69
1	5	0.75	240.00	3973.69
1	15	0.75	250.00	4129.89
2	5	0.75	250.00	4129.89
2	10	0.75	250.00	4129.89
2	15	0.75	280.00	4598.49

Serial #: 6625

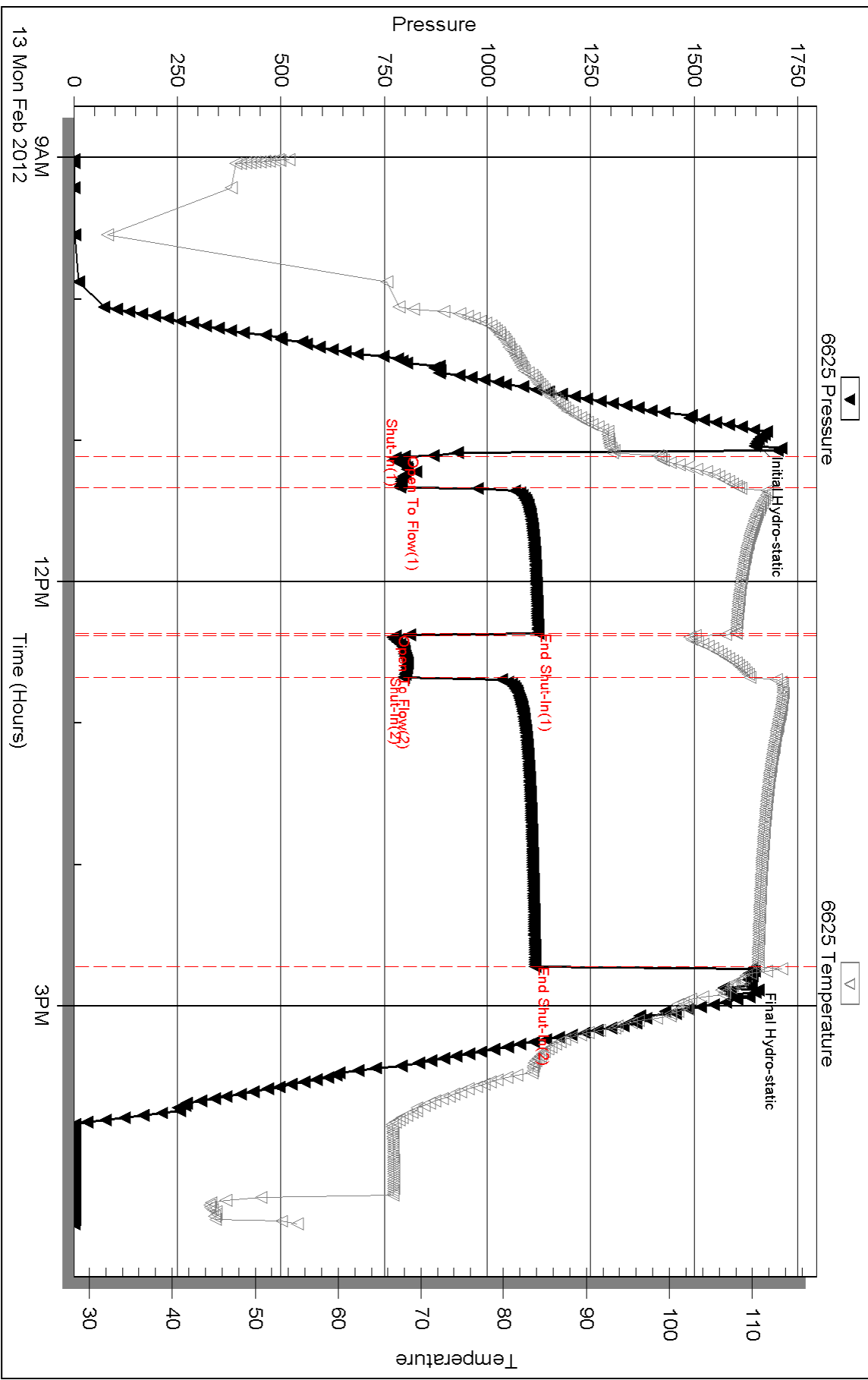
Inside

Dow nung-Nelson Oil Co Inc

Urban #1-9

DST Test Number: 3

Pressure vs. Time



Triobite Testing, Inc

Ref. No: 46843

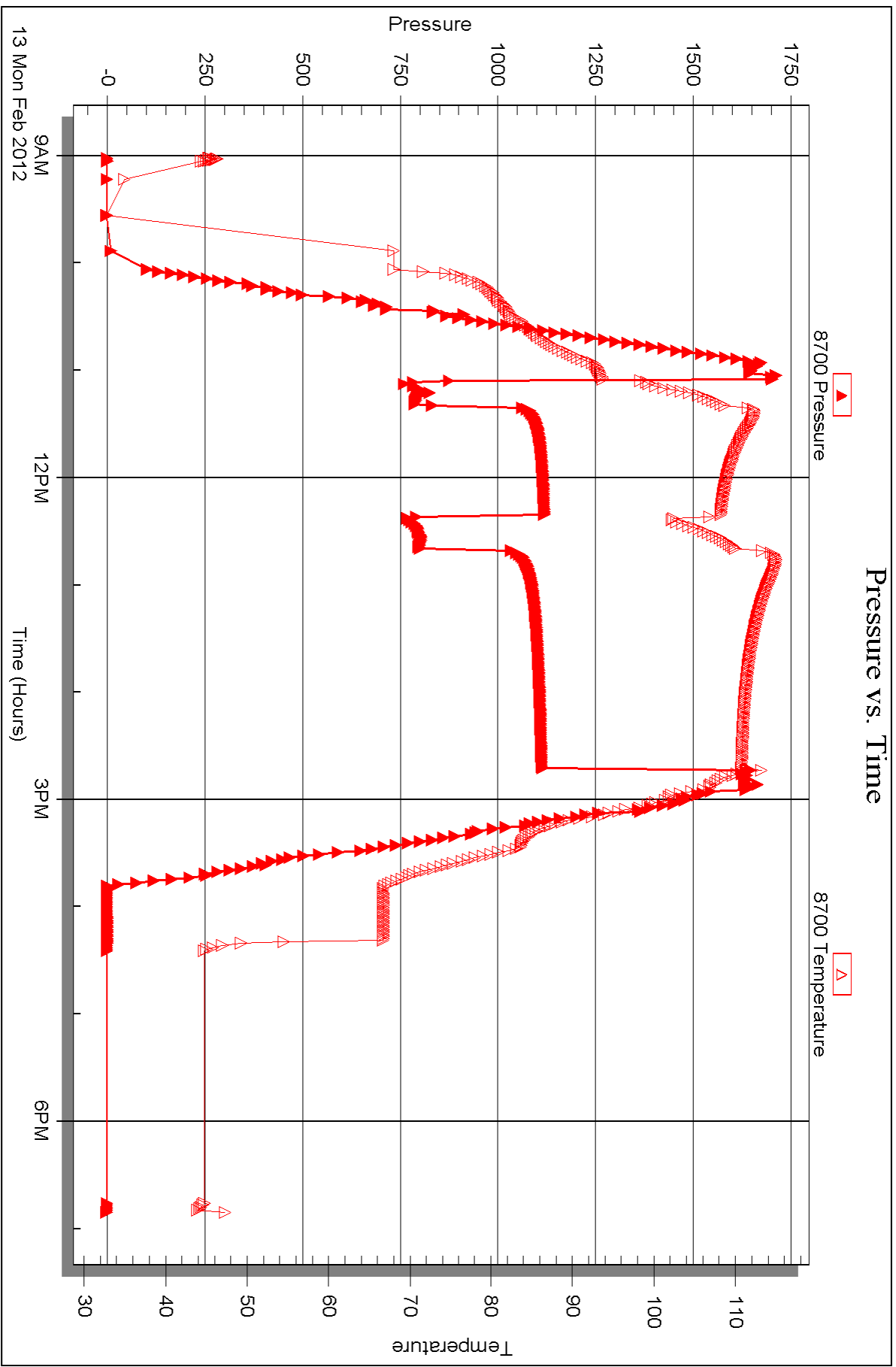
Printed: 2012.02.20 @ 14:26:39

Serial #: 8700

Outside Dow nting-Nelson Oil Co Inc

Urban #1-9

DST Test Number: 3





DRILL STEM TEST REPORT

Prepared For: **Downing-Nelson Oil Co Inc**

PO Box1019
Hays KS 67601

ATTN: Al Downing

Urban #1-9

9-16s-17w Rush,KS

Start Date: 2012.02.13 @ 23:15:07

End Date: 2012.02.14 @ 06:30:01

Job Ticket #: 46844 DST #: 4

Trilobite Testing, Inc

PO Box 362 Hays, KS 67601

ph: 785-625-4778 fax: 785-625-5620

Printed: 2012.02.20 @ 14:23:10



TRILOBITE TESTING, INC

DRILL STEM TEST REPORT

Dow ning-Nelson Oil Co Inc

9-16s-17w Rush,KS

PO Box 1019
Hays KS 67601

Urban #1-9

Job Ticket: 46844

DST#: 4

ATTN: Al Dow ning

Test Start: 2012.02.13 @ 23:15:07

GENERAL INFORMATION:

Formation: **Arbuckle**

Deviated: No Whipstock: ft (KB)

Time Tool Opened: 01:18:32

Time Test Ended: 06:30:01

Test Type: Conventional Bottom Hole (Reset)

Tester: Ray Schw ager

Unit No: 42

Interval: 3538.00 ft (KB) To 3544.00 ft (KB) (TVD)

Reference Elevations: 1953.00 ft (KB)

Total Depth: 3544.00 ft (KB) (TVD)

1945.00 ft (CF)

Hole Diameter: 7.88 inches Hole Condition: Fair

KB to GR/CF: 8.00 ft

Serial #: 6625 Inside

Press @RunDepth: 50.43 psig @ 3539.00 ft (KB)

Capacity: 8000.00 psig

Start Date: 2012.02.13

End Date:

2012.02.14

Last Calib.:

2012.02.14

Start Time:

23:15:07

End Time:

06:30:01

Time On Btm:

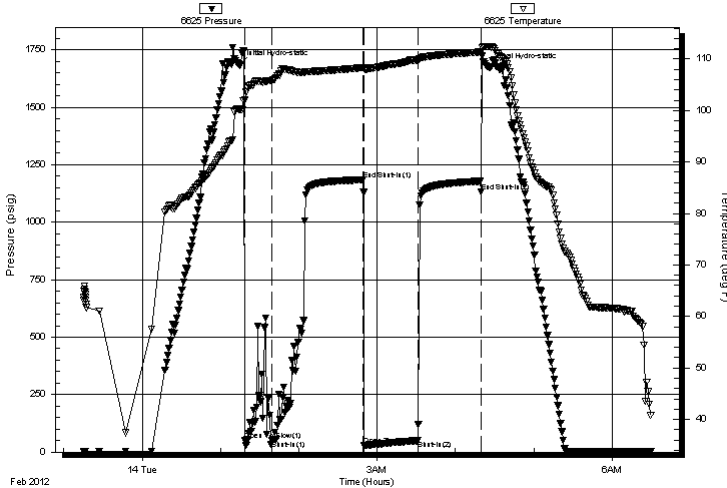
2012.02.14 @ 01:14:32

Time Off Btm:

2012.02.14 @ 04:25:31

TEST COMMENT: 45-IFP-w k to a gd bl 1/2" to 8" bl
45-ISIP-no bl 1st 20 min, then surface bl
45-FFP-w k to strg in 10 min
45-FSIP-surface bl bk

Pressure vs. Time



PRESSURE SUMMARY

Time (Min.)	Pressure (psig)	Temp (deg F)	Annotation
0	1683.64	100.20	Initial Hydro-static
4	49.97	101.98	Open To Flow (1)
25	52.05	105.83	Shut-In(1)
95	1184.18	108.32	End Shut-In(1)
96	29.27	108.06	Open To Flow (2)
137	50.43	109.72	Shut-In(2)
185	1131.96	111.34	End Shut-In(2)
191	1674.47	112.39	Final Hydro-static

Recovery

Length (ft)	Description	Volume (bbl)
0.00	650'GIP	0.00
70.00	CO	0.98
20.00	GMO 20%G15%M65%O	0.28

Gas Rates

	Choke (inches)	Pressure (psig)	Gas Rate (Mcf/d)

* Recovery from multiple tests



**TRILOBITE
TESTING, INC**

DRILL STEM TEST REPORT

TOOL DIAGRAM

Dow ning-Nelson Oil Co Inc

9-16s-17w Rush,KS

PO Box 1019
Hays KS 67601

Urban #1-9

Job Ticket: 46844

DST#: 4

ATTN: Al Dow ning

Test Start: 2012.02.13 @ 23:15:07

Tool Information

Drill Pipe:	Length: 3548.00 ft	Diameter: 3.80 inches	Volume: 49.77 bbl	Tool Weight:	2200.00 lb
Heavy Wt. Pipe:	Length: 0.00 ft	Diameter: 0.00 inches	Volume: 0.00 bbl	Weight set on Packer:	25000.00 lb
Drill Collar:	Length: 0.00 ft	Diameter: 0.00 inches	Volume: 0.00 bbl	Weight to Pull Loose:	70000.00 lb
			<u>Total Volume: 49.77 bbl</u>	Tool Chased	6.00 ft
Drill Pipe Above KB:	31.00 ft			String Weight: Initial	58000.00 lb
Depth to Top Packer:	3538.00 ft			Final	58000.00 lb
Depth to Bottom Packer:	ft				
Interval betw een Packers:	6.00 ft				
Tool Length:	27.00 ft				
Number of Packers:	2	Diameter: 6.75 inches			
Tool Comments:					

Tool Description	Length (ft)	Serial No.	Position	Depth (ft)	Accum. Lengths
------------------	-------------	------------	----------	------------	----------------

Change Over Sub	1.00			3518.00	
Shut In Tool	5.00			3523.00	
Hydraulic tool	5.00			3528.00	
Packer	5.00			3533.00	21.00 Bottom Of Top Packer
Packer	5.00			3538.00	
Stubb	1.00			3539.00	
Recorder	0.00	6625	Inside	3539.00	
Recorder	0.00	8700	Outside	3539.00	
Perforations	2.00			3541.00	
Bullnose	3.00			3544.00	6.00 Bottom Packers & Anchor
Total Tool Length:	27.00				



TRILOBITE
TESTING, INC

DRILL STEM TEST REPORT

FLUID SUMMARY

Dow ning-Nelson Oil Co Inc

9-16s-17w Rush,KS

PO Box 1019
Hays KS 67601

Urban #1-9

Job Ticket: 46844

DST#: 4

ATTN: Al Dow ning

Test Start: 2012.02.13 @ 23:15:07

Mud and Cushion Information

Mud Type: Gel Chem

Cushion Type:

Oil API:

25 deg API

Mud Weight: 9.00 lb/gal

Cushion Length:

ft

Water Salinity:

ppm

Viscosity: 53.00 sec/qt

Cushion Volume:

bbbl

Water Loss: 9.16 in³

Gas Cushion Type:

Resistivity: ohm.m

Gas Cushion Pressure:

psig

Salinity: 5800.00 ppm

Filter Cake: 1.00 inches

Recovery Information

Recovery Table

Length ft	Description	Volume bbbl
0.00	650'GIP	0.000
70.00	CO	0.982
20.00	GMO 20%G15%M65%O	0.281

Total Length: 90.00 ft Total Volume: 1.263 bbl

Num Fluid Samples: 0

Num Gas Bombs: 0

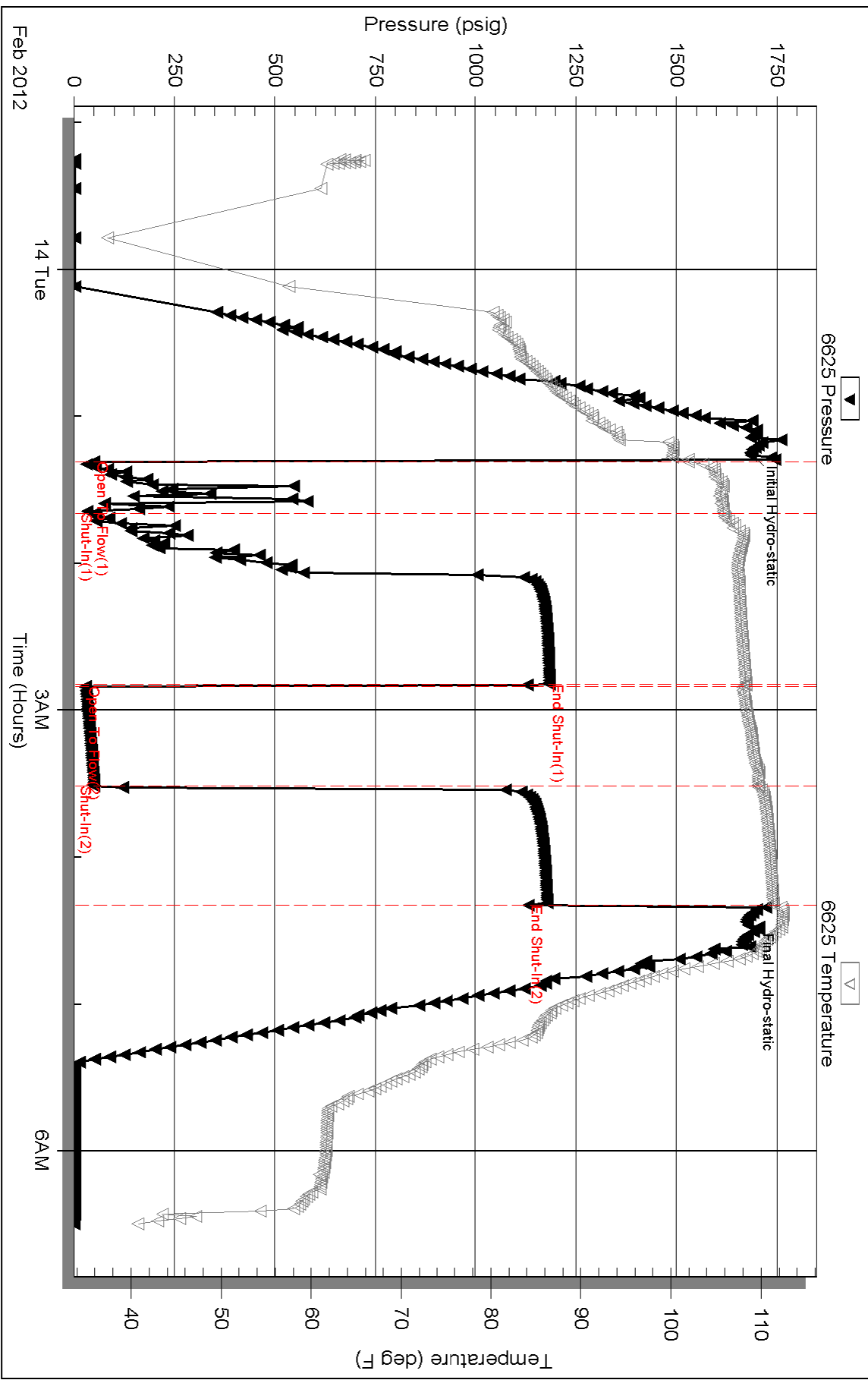
Serial #:

Laboratory Name:

Laboratory Location:

Recovery Comments: slid tool 6'to bottom

Pressure vs. Time





TRILOBITE TESTING INC.

P.O. Box 1733 • Hays, Kansas 67601

RECEIVED
FEB 15 2012

Test Ticket

NO. 46841

4/10

BY: _____

Well Name & No. Urban #1-9 Test No. 1 Date 2-11-12
 Company Downing-Nelson Oil Co Inc Elevation 1953 KB 1945 GL
 Address P.O Box 1019 Hays Ks 67601
 Co. Rep / Geo. AL Downing Rig Discovery 1193
 Location: Sec. 9 Twp. 16^s Rge. 17^w Co. Rush State Ks

Interval Tested 3123-3140 Zone Tested PLATTSMOUTH
 Anchor Length 17 Drill Pipe Run 3133 Mud Wt. 9
 Top Packer Depth 3118 Drill Collars Run 0 Vis 50
 Bottom Packer Depth 3123 Wt. Pipe Run - WL 8.2
 Total Depth 3140 Chlorides 2800 ppm System LCM 2#
 Blow Description IFP - STRONG BLOW GTS IN 12min TOUPEAK TO GAUGE
ISTP - NO BLOW
FFP - GTS
FSTP - NO BLOW

Rec	Feet of	%gas	%oil	%water	%mud
<u>10</u>	<u>M60</u>	<u>10</u>	<u>70</u>	<u>20</u>	
<u>60</u>	<u>M60</u>	<u>10</u>	<u>80</u>	<u>10</u>	
Rec	Feet of	%gas	%oil	%water	%mud
Rec	Feet of	%gas	%oil	%water	%mud
Rec	Feet of	%gas	%oil	%water	%mud

Rec Total 70 BHT 99 Gravity - API RW - @ - ° F Chlorides - ppm

(A) Initial Hydrostatic <u>1477</u>	<input checked="" type="checkbox"/> Test <u>1125</u>	T-On Location <u>0900</u>
(B) First Initial Flow <u>32</u>	<input type="checkbox"/> Jars	T-Started <u>1010</u>
(C) First Final Flow <u>36</u>	<input type="checkbox"/> Safety Joint	T-Open <u>1225</u>
(D) Initial Shut-In <u>871</u>	<input type="checkbox"/> Circ Sub	T-Pulled <u>1510</u>
(E) Second Initial Flow <u>38</u>	<input type="checkbox"/> Hourly Standby	T-Out <u>1658</u>
(F) Second Final Flow <u>34</u>	<input checked="" type="checkbox"/> Mileage <u>52 RT 72.80</u>	Comments
(G) Final Shut-In <u>865</u>	<input type="checkbox"/> Sampler	
(H) Final Hydrostatic <u>1452</u>	<input type="checkbox"/> Straddle	<input type="checkbox"/> Ruined Shale Packer
	<input type="checkbox"/> Shale Packer	<input type="checkbox"/> Ruined Packer
Initial Open <u>15</u>	<input type="checkbox"/> Extra Packer	<input type="checkbox"/> Extra Copies
Initial Shut-In <u>30</u>	<input type="checkbox"/> Extra Recorder	Sub Total <u>0</u>
Final Flow <u>60</u>	<input type="checkbox"/> Day Standby	Total <u>1197.80</u>
Final Shut-In <u>60</u>	<input type="checkbox"/> Accessibility	MP/DST Disc't
	Sub Total <u>1197.80</u>	

Approved By _____

Our Representative Ray Schuenger

Thank you

Trilobite Testing Inc. shall not be liable for damaged of any kind of the property or personnel of the one for whom a test is made, or for any loss suffered or sustained, directly or indirectly, through the use of its equipment, or its statements or opinion concerning the results of any test, tools lost or damaged in the hole shall be paid for at cost by the party for whom the test is made.



TRILOBITE TESTING INC.

P.O. Box 1733 • Hays, Kansas 67601

RECEIVED
FEB 15 2012

Test Ticket

NO. 46842

4/10

Well Name & No. Urban # 1-9 BY: _____ Test No. 2 Date 2-12-12
 Company Downing-Nelson Oil Co Inc Elevation 1953 KB 1945 GL _____
 Address PO Box 1019 Hays, Ks 67601
 Co. Rep / Geo. AL Downing Rig Discovery rig 3
 Location: Sec. 9 Twp. 16^s Rge. 17^w Co. Rush State Ks

Interval Tested 3356-3430 Zone Tested LKC H-J
 Anchor Length 74 Drill Pipe Run 3357 Mud Wt. 8.9
 Top Packer Depth 3351 Drill Collars Run - Vis 52
 Bottom Packer Depth 3356 Wt. Pipe Run - WL 8.2
 Total Depth 3430 Chlorides 4000 ppm System LCM 1 1/2 #
 Blow Description IFP - WEAK Blow 1/4" To 3/4" Blow
ISIP - NO Blow
FFP - WEAK Blow 1/4" To 3/4" Blow
FSIP - NO Blow

Rec	Feet of	%gas	%oil	%water	%mud
<u>110</u>	<u>6IP</u>				
<u>10</u>	<u>50+6CM</u>	<u>5</u>	<u>4</u>		<u>91</u>
Rec	Feet of	%gas	%oil	%water	%mud
Rec	Feet of	%gas	%oil	%water	%mud

Rec Total 10 BHT 99 Gravity - API RW - @ - ° F Chlorides - ppm

(A) Initial Hydrostatic 1600 Test 1125' T-On Location 1545
 (B) First Initial Flow 17 Jars _____ T-Started 1605
 (C) First Final Flow 18 Safety Joint _____ T-Open 1800
 (D) Initial Shut-In 87 Circ Sub _____ T-Pulled 2000
 (E) Second Initial Flow 17 Hourly Standby _____ T-Out 2145
 (F) Second Final Flow 24 Mileage 52 RT 72.80 Comments _____
 (G) Final Shut-In 72 Sampler _____
 (H) Final Hydrostatic 1594 Straddle _____ Ruined Shale Packer _____
 Shale Packer _____ Ruined Packer _____
 Extra Packer _____ Extra Copies _____
 Initial Open 30 Extra Recorder _____ Sub Total 0
 Initial Shut-In 30 Day Standby _____ Total 1197.80
 Final Flow 30 Accessibility _____ MP/DST Disc't _____
 Final Shut-In 30 Sub Total 1197.80

Approved By _____

Our Representative Ray Schwager

Thank you



TRILOBITE TESTING INC.

P.O. Box 1733 • Hays, Kansas 67601

RECEIVED
FEB 15 2012
BY: _____

Test Ticket

NO. 46843

Well Name & No. Urban #1-9 Test No. 3 Date 2-13-12
 Company Downing-Nelson Oil Co Inc Elevation 1953 KB 1945 GL
 Address P.O. Box 1019 Hays, Ks 67601
 Co. Rep / Geo. AL Downing Rig Discovery rig 3
 Location: Sec. 9 Twp. 16^s Rge. 17^w Co. Rush State Ks

Interval Tested 3460-3525 Zone Tested Congl sd.
 Anchor Length 65 Drill Pipe Run 3452 Mud Wt. 9.2
 Top Packer Depth 3455 Drill Collars Run - Vis 50
 Bottom Packer Depth 3460 Wt. Pipe Run - WL 9.2
 Total Depth 3525 Chlorides 5800 ppm System LCM 2[#]

Blow Description IFP - Strong Blow GTS in 2min
ISIP - 1" Blow Back
FFP - GTS
FSIP - 1" Blow Back

Rec	Feet of	%gas	%oil	%water	%mud
<u>50</u>	<u>Mud</u>				
Rec	Feet of	%gas	%oil	%water	%mud
Rec	Feet of	%gas	%oil	%water	%mud
Rec	Feet of	%gas	%oil	%water	%mud
Rec	Feet of	%gas	%oil	%water	%mud

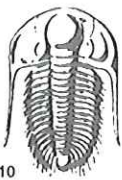
Rec Total 50 BHT 110 Gravity - API RW - @ - ° F Chlorides - ppm

(A) Initial Hydrostatic 1648 Test 1125 T-On Location 0840
 (B) First Initial Flow 798 Jars _____ T-Started 0900
 (C) First Final Flow 786 Safety Joint _____ T-Open 1105
 (D) Initial Shut-In 1122 Circ Sub _____ T-Pulled 1340
 (E) Second Initial Flow 776 Hourly Standby _____ T-Out 1632
 (F) Second Final Flow 797 Mileage 52RT 72.80 Comments _____
 (G) Final Shut-In 1115 Sampler _____
 (H) Final Hydrostatic 1632 Straddle _____ Ruined Shale Packer _____
 Shale Packer _____ Ruined Packer _____

Initial Open 15 Extra Packer _____ Extra Copies _____
 Initial Shut-In 60 Extra Recorder _____ Sub Total 0
 Final Flow 20 Day Standby _____ Total 1197.80
 Final Shut-In 120 Accessibility _____ MP/DST Disc't _____
 Sub Total 1197.80

Approved By _____ Our Representative Ray Schwager *thank you*

Trilobite Testing Inc. shall not be liable for damaged of any kind of the property or personnel of the one for whom a test is made, or for any loss suffered or sustained, directly or indirectly, through the use of its equipment, or its statements or opinion concerning the results of any test, tools lost or damaged in the hole shall be paid for at cost by the party for whom the test is made.



TRILOBITE TESTING INC.

P.O. Box 1733 • Hays, Kansas 67601

RECEIVED
FEB 15 2012
BY: _____

Test Ticket

NO. 46844

Well Name & No. Urban # 1-9 Test No. 4 Date 2-13-12
 Company Downing-Nelson Oil Co Inc Elevation 1953 KB 1945 GL
 Address PO Box 1019 Hays, Ks 67601
 Co. Rep / Geo. AL Downing Rig Discovery rig 3
 Location: Sec. 9 Twp. 16^s Rge. 17^w Co. Rush State Ks

Interval Tested 3538-3544 Zone Tested Arbuckle
 Anchor Length 6 Drill Pipe Run 3548 Mud Wt. 9
 Top Packer Depth 3533 Drill Collars Run - Vis 53
 Bottom Packer Depth 3538 Wt. Pipe Run - WL 9.2
 Total Depth 3544 Chlorides 5800 ppm System LCM 2#
 Blow Description IFP - Weak to a good blow 1/2" to 8" blow
ISIP - NO blow 20 min, then surface blow
FFP - Weak to strong in 10 min
FSTIP - surface blow

Rec	Feet of	%gas	%oil	%water	%mud
<u>650</u>	<u>GIP</u>				
<u>70</u>	<u>CO</u>				
<u>20</u>	<u>GMO</u>	<u>20</u>	<u>65</u>		<u>15</u>

Rec Total 90 BHT 1 Gravity 25 API RW - @ - °F Chlorides - ppm

(A) Initial Hydrostatic 1683 Test 1125' T-On Location 2250
 (B) First Initial Flow 49 Jars - T-Started 2315
 (C) First Final Flow 52 Safety Joint - T-Open 0120
 (D) Initial Shut-In 1184 Circ Sub - T-Pulled 0420
 (E) Second Initial Flow 29 Hourly Standby - T-Out 0630
 (F) Second Final Flow 50 Mileage 52 RT 72.50 Comments _____
 (G) Final Shut-In 1131 Sampler _____
 (H) Final Hydrostatic 1674 Straddle _____
 Ruined Shale Packer _____
 Ruined Packer _____
 Extra Copies _____

Initial Open 45 Extra Packer _____
 Initial Shut-In 45 Extra Recorder _____
 Final Flow 45 Day Standby _____
 Final Shut-In 45 Accessibility _____
 Sub Total 1197.80 MP/DST Disc't _____

Approved By _____ Our Representative Ray Schwager *thank you*

Trilobite Testing Inc. shall not be liable for damaged of any kind of the property or personnel of the one for whom a test is made, or for any loss suffered or sustained, directly or indirectly, through the use of its equipment, or its statements or opinion concerning the results of any test, tools lost or damaged in the hole shall be paid for at cost by the party for whom the test is made.