



DRILL STEM TEST REPORT

Prepared For: **LB Exploration Inc**

2135 2nd RD Holyrood KS 67450 + 9021

ATTN: Scott Alberg

28-32-13w Barber

Hopkins Ranch 28 #1

Start Date: 2011.09.11 @ 19:54:00

End Date: 2011.09.12 @ 04:36:00

Job Ticket #: 18633 DST #: 1

Superior Testers Enterprises LLC
PO Box 138 Great Bend KS 67530
1-800-792-6902

Printed: 2011.09.12 @ 04:51:42

LB Exploration Inc
Hopkins Ranch 28 #1
28-32-13w Barber
DST # 1
Mississippi
2011.09.11



DRILL STEM TEST REPORT

TOOL DIAGRAM

LB Exploration Inc
 2135 2nd RD Holyrood KS 67450 + 9021
 ATTN: Scott Alberg

Hopkins Ranch 28 #1
28-32-13w Barber
 Job Ticket: 18633 **DST#: 1**
 Test Start: 2011.09.11 @ 19:54:00

Tool Information

Drill Pipe:	Length: 4388.00 ft	Diameter: 3.80 inches	Volume: 61.55 bbl	Tool Weight: 1000.00 lb
Heavy Wt. Pipe:	Length: 0.00 ft	Diameter: 0.00 inches	Volume: 0.00 bbl	Weight set on Packer: 20000.00 lb
Drill Collar:	Length: 0.00 ft	Diameter: 0.00 inches	Volume: 0.00 bbl	Weight to Pull Loose: 57000.00 lb
			<u>Total Volume: 61.55 bbl</u>	Tool Chased 0.00 ft
Drill Pipe Above KB:	25.00 ft			String Weight: Initial 51000.00 lb
Depth to Top Packer:	4391.00 ft			Final 51000.00 lb
Depth to Bottom Packer:	ft			
Interval between Packers:	54.00 ft			
Tool Length:	82.00 ft			
Number of Packers:	2	Diameter: 6.75 inches		

Tool Comments:

Tool Description	Length (ft)	Serial No.	Position	Depth (ft)	Accum. Lengths
SHut-InTool	5.00		Inside	4368.00	
Hydraulic Tool	5.00			4373.00	
Jars	6.00			4379.00	
Safety Joint	2.00			4381.00	
Packer	5.00			4386.00	28.00 Bottom Of Top Packer
Packer	5.00			4391.00	
Anchor	0.00			4391.00	
Change Over Sub	0.75			4391.75	
Drill Pipe	30.50		Outside	4422.25	
Change Over Sub	0.75		Outside	4423.00	
Anchor	17.00			4440.00	
Recorder	1.00	8419	Inside	4441.00	
Recorder	1.00	8524	Outside	4442.00	
Bullnose	3.00			4445.00	54.00 Bottom Packers & Anchor

Total Tool Length: 82.00



DRILL STEM TEST REPORT

FLUID SUMMARY

LB Exploration Inc
 2135 2nd RD Holyrood KS 67450 + 9021
 ATTN: Scott Alberg

Hopkins Ranch 28 #1
28-32-13w Barber
 Job Ticket: 18633 **DST#: 1**
 Test Start: 2011.09.11 @ 19:54:00

Mud and Cushion Information

Mud Type: Gel Chem	Cushion Type:	Oil API:	deg API
Mud Weight: 9.00 lb/gal	Cushion Length: ft	Water Salinity:	ppm
Viscosity: 49.00 sec/qt	Cushion Volume: bbl		
Water Loss: 10.39 in ³	Gas Cushion Type:		
Resistivity: ohm.m	Gas Cushion Pressure: psia		
Salinity: 7800.00 ppm			
Filter Cake: 1.00 inches			

Recovery Information

Recovery Table

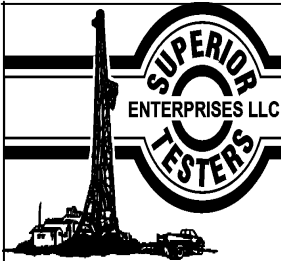
Length ft	Description	Volume bbl
30.00	Mud	0.421
0.00	4358 feet gas in pipe	0.000

Total Length: 30.00 ft Total Volume: 0.421 bbl

Num Fluid Samples: 0 Num Gas Bombs: 0 Serial #:

Laboratory Name: Laboratory Location:

Recovery Comments: gas to surface 5 minutes into the 2nd open



DRILL STEM TEST REPORT

GAS RATES

LB Exploration Inc
2135 2nd RD Holyrood KS 67450 + 9021
ATTN: Scott Alberg

Hopkins Ranch 28 #1
28-32-13w Barber
Job Ticket: 18633 **DST#: 1**
Test Start: 2011.09.11 @ 19:54:00

Gas Rates Information

Temperature: 59 (deg F)
Relative Density: 0.65
Z Factor: 0.8

Gas Rates Table

Flow Period	Elapsed Time	Choke (inches)	Pressure (psia)	Gas Rate (Mcf/d)
2	10	0.25	3.40	5.39
2	20	0.25	5.10	8.09
2	30	0.25	7.20	11.42
2	40	0.25	7.60	12.06

Serial #: 8419

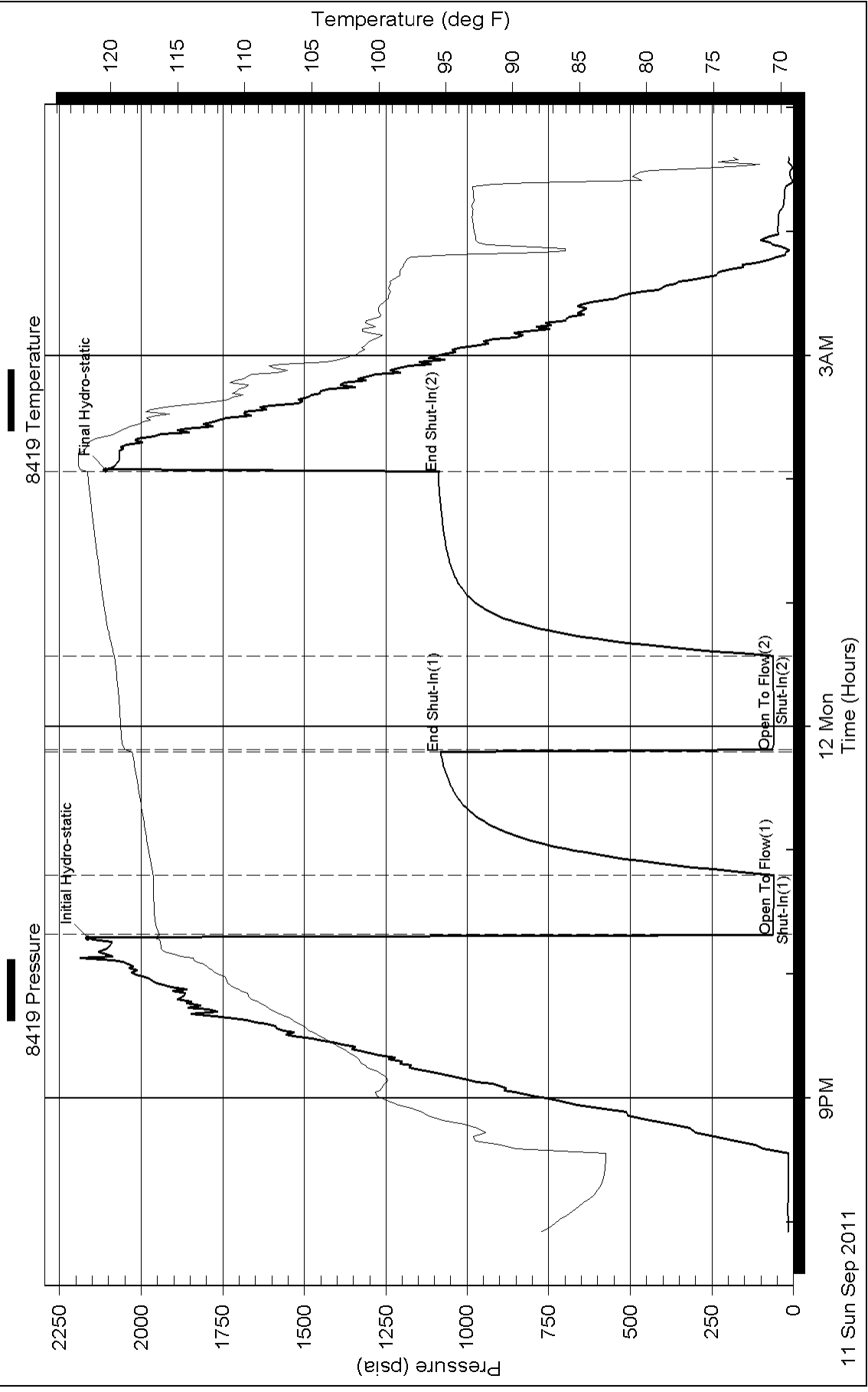
Inside

LB Exploration Inc

28-32-13w Barber

DST Test Number: 1

Pressure vs. Time



Pressure vs. Time

