



**TRILOBITE
TESTING, INC.**

DRILL STEM TEST REPORT

Woolsey Oper Comp LLC

13-34s-11w

125 N Market STE 1000
Wichita KS 67202+1729

Ricke A -1

Job Ticket: 44104

DST#: 1

ATTN: Dean Pattisson/Scott

Test Start: 2011.11.10 @ 13:27:24

GENERAL INFORMATION:

Formation: **Mississippi**

Deviated: No Whipstock: ft (KB)

Time Tool Opened: 17:21:54

Time Test Ended: 00:55:54

Test Type: Conventional Bottom Hole (Initial)

Tester: Chris Staats

Unit No: 34

Interval: 4549.00 ft (KB) To 4663.00 ft (KB) (TVD)

Reference Elevations: 1401.00 ft (KB)

Total Depth: 4663.00 ft (KB) (TVD)

1392.00 ft (CF)

Hole Diameter: 7.88 inches Hole Condition: Fair

KB to GR/CF: 9.00 ft

Serial #: 8166 Outside

Press @ Run Depth: 166.96 psig @ 4550.00 ft (KB)

Capacity: 8000.00 psig

Start Date: 2011.11.10

End Date:

2011.11.11

Last Calib.: 2011.11.11

Start Time: 13:27:29

End Time:

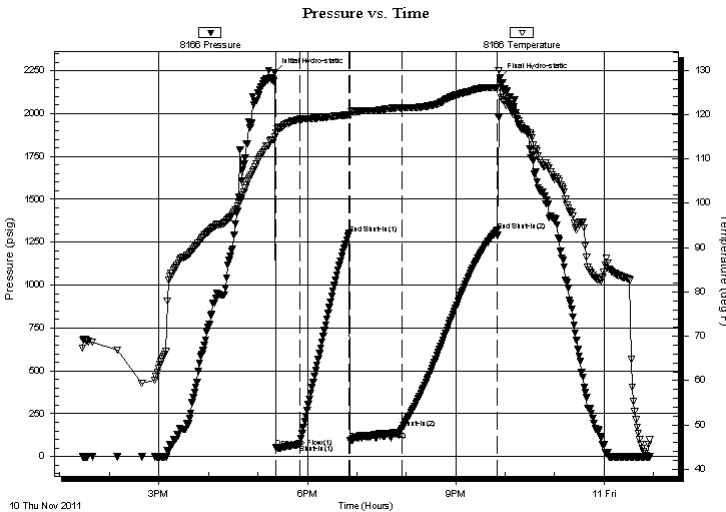
00:55:54

Time On Btm: 2011.11.10 @ 17:20:39

Time Off Btm: 2011.11.10 @ 21:53:39

TEST COMMENT: IF: Strong blow BOB 3 min
IS: No blow back
FF: Strong blow BOB 10 sec GTS 43 min
FS: Weak blow back 3 1/2 "

PRESSURE SUMMARY



Time (Min.)	Pressure (psig)	Temp (deg F)	Annotation
0	2240.02	114.91	Initial Hydro-static
2	55.33	115.80	Open To Flow (1)
31	71.74	118.98	Shut-In(1)
90	1300.51	119.98	End Shut-In(1)
92	93.59	119.87	Open To Flow (2)
155	166.96	121.58	Shut-In(2)
270	1318.82	126.13	End Shut-In(2)
273	2207.86	125.92	Final Hydro-static

Recovery

Length (ft)	Description	Volume (bbl)
0.00	4541' GIP	0.00
140.00	Gassy oil cut mud 2% oil 10% gas 88%	n0.69
120.00	Oil cut gassy mud 5% oil 15% gas 80%	n0.59

Gas Rates

	Choke (inches)	Pressure (psig)	Gas Rate (Mcf/d)



**TRILOBITE
TESTING, INC.**

DRILL STEM TEST REPORT

FLUID SUMMARY

Woolsey Oper Comp LLC

13-34s-11w

125 N Market STE 1000
Wichita KS 67202+1729

Ricke A -1

Job Ticket: 44104

DST#: 1

ATTN: Dean Pattisson/Scott

Test Start: 2011.11.10 @ 13:27:24

Mud and Cushion Information

Mud Type: Gel Chem

Cushion Type:

Oil API:

deg API

Mud Weight: 9.00 lb/gal

Cushion Length:

ft

Water Salinity:

ppm

Viscosity: 46.00 sec/qt

Cushion Volume:

bbbl

Water Loss: 8.79 in³

Gas Cushion Type:

Resistivity: 0.00 ohm.m

Gas Cushion Pressure:

psig

Salinity: 5000.00 ppm

Filter Cake: 0.02 inches

Recovery Information

Recovery Table

Length ft	Description	Volume bbbl
0.00	4541' GIP	0.000
140.00	Gassy oil cut mud 2% oil 10% gas 88% mud	0.688
120.00	Oil cut gassy mud 5% oil 15% gas 80% mud	0.590

Total Length: 260.00 ft

Total Volume: 1.278 bbl

Num Fluid Samples: 0

Num Gas Bombs: 0

Serial #:

Laboratory Name:

Laboratory Location:

Recovery Comments:

Pressure vs. Time

