



DRILL STEM TEST REPORT

Prepared For: **Sam Gary Jr & Associates**

1515 Wynkoop St
Suite 700 Denver Co 80202

ATTN:

Tuzicka-Dewald 1-34

34-16s-16w-Rush

Start Date: 2011.11.15 @ 13:49:01

End Date: 2011.11.15 @ 20:55:01

Job Ticket #: 44875 DST #: 2

Trilobite Testing, Inc
PO Box 362 Hays, KS 67601
ph: 785-625-4778 fax: 785-625-5620

Printed: 2011.11.17 @ 10:25:21



**TRILOBITE
TESTING, INC.**

DRILL STEM TEST REPORT

Sam Gary Jr & Associates

34-16s-16w-Rush

1515 Wynkoop St
Suite 700 Denver Co 80202

Tuzicka-Dewald 1-34

Job Ticket: 44875 **DST#: 2**

ATTN:

Test Start: 2011.11.15 @ 13:49:01

GENERAL INFORMATION:

Formation: **Lansing F&G**

Deviated: No Whipstock: ft (KB)

Time Tool Opened: 15:41:31

Time Test Ended: 20:55:01

Test Type: Conventional Bottom Hole (Reset)

Tester: Jeff Brown

Unit No: 44

Interval: 3314.00 ft (KB) To 3343.00 ft (KB) (TVD)

Reference Elevations: 1977.00 ft (KB)

Total Depth: 3343.00 ft (KB) (TVD)

1969.00 ft (CF)

Hole Diameter: 7.88 inches Hole Condition: Good

KB to GR/CF: 8.00 ft

Serial #: 8321

Inside

Press @ Run Depth: 47.51 psig @ 3315.00 ft (KB)

Capacity: 8000.00 psig

Start Date: 2011.11.15 End Date: 2011.11.15

Last Calib.: 2011.11.15

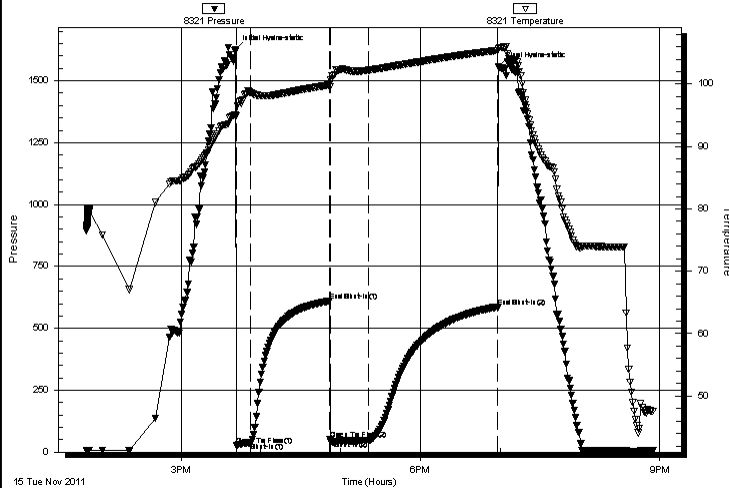
Start Time: 13:49:02 End Time: 20:55:01

Time On Btm: 2011.11.15 @ 15:41:01

Time Off Btm: 2011.11.15 @ 18:58:31

TEST COMMENT: IFP-10-Min-Weak blow built to 2 in
ISI-60-Min-Weak surface blow back
FFP-30-Min-Weak blow built to 3 1/8 in
FSI-90-Min-Dead no blow back

Pressure vs. Time



PRESSURE SUMMARY

Time (Min.)	Pressure (psig)	Temp (deg F)	Annotation
0	1624.53	95.09	Initial Hydro-static
1	27.01	94.93	Open To Flow (1)
11	38.22	98.59	Shut-In(1)
71	609.81	99.85	End Shut-In(1)
71	50.30	99.62	Open To Flow (2)
100	47.51	102.21	Shut-In(2)
197	584.14	105.39	End Shut-In(2)
198	1557.28	105.70	Final Hydro-static

Recovery

Length (ft)	Description	Volume (bbl)
20.00	WM with oil spots 10%W90%M	0.10

Gas Rates

Choke (inches)	Pressure (psig)	Gas Rate (Mcf/d)

* Recovery from multiple tests



TRILOBITE
TESTING, INC.

DRILL STEM TEST REPORT

Sam Gary Jr & Associates
1515 Wynkoop St
Suite 700 Denver Co 80202
ATTN:

34-16s-16w-Rush

Tuzicka-Dewald 1-34
Job Ticket: 44875 **DST#: 2**
Test Start: 2011.11.15 @ 13:49:01

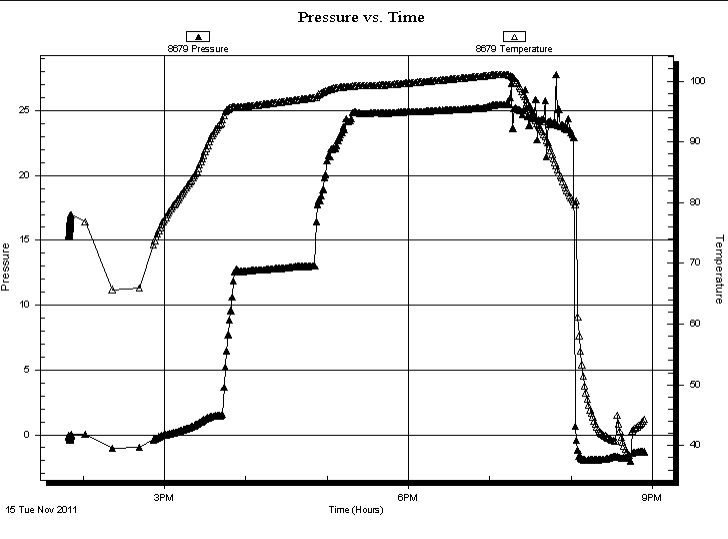
GENERAL INFORMATION:

Formation: **Lansing F&G**
Deviated: No Whipstock: ft (KB) Test Type: Conventional Bottom Hole (Reset)
Time Tool Opened: 15:41:31 Tester: Jeff Brown
Time Test Ended: 20:55:01 Unit No: 44

Interval: 3314.00 ft (KB) To 3343.00 ft (KB) (TVD) Reference Elevations: 1977.00 ft (KB)
Total Depth: 3343.00 ft (KB) (TVD) 1969.00 ft (CF)
Hole Diameter: 7.88 inches Hole Condition: Good KB to GR/CF: 8.00 ft

Serial #: 8679 Fluid
Press @ RunDepth: psig @ 3279.00 ft (KB) Capacity: 8000.00 psig
Start Date: 2011.11.15 End Date: 2011.11.15 Last Calib.: 2011.11.15
Start Time: 13:49:26 End Time: 20:53:55 Time On Btm: Time Off Btm:

TEST COMMENT: IFP-10-Min-Weak blow built to 2 in
ISI-60-Min-Weak surface blow back
FFP-30-Min-Weak blow built to 3 1/8 in
FSI-90-Min-Dead no blow back

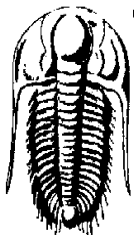


PRESSURE SUMMARY			
Time (Min.)	Pressure (psig)	Temp (deg F)	Annotation

Recovery		
Length (ft)	Description	Volume (bbl)
20.00	WM with oil spots 10%W90%M	0.10

* Recovery from multiple tests

Gas Rates			
	Choke (inches)	Pressure (psig)	Gas Rate (Mcf/d)



**TRILOBITE
TESTING, INC.**

DRILL STEM TEST REPORT

Sam Gary Jr & Associates

1515 Wynkoop St
Suite 700 Denver Co 80202

ATTN:

34-16s-16w-Rush

Tuzicka-Dewald 1-34

Job Ticket: 44875

DST#: 2

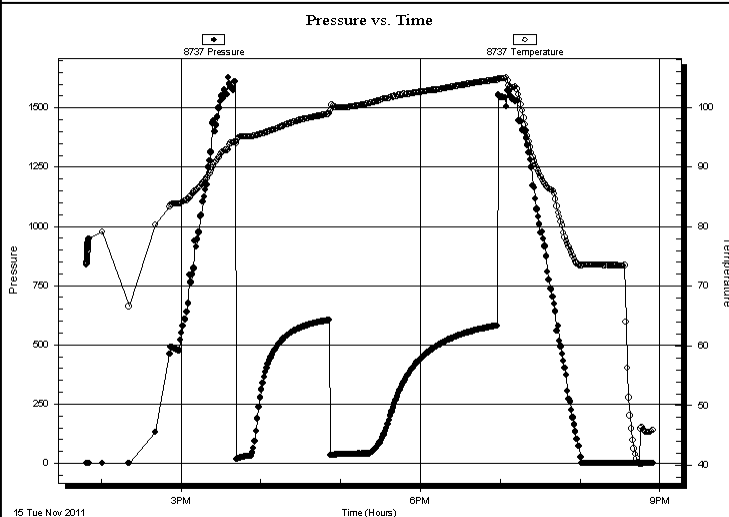
Test Start: 2011.11.15 @ 13:49:01

GENERAL INFORMATION:

Formation:	Lansing F&G	
Deviated:	No Whipstock:	ft (KB)
Time Tool Opened:	15:41:31	
Time Test Ended:	20:55:01	
Interval:	3314.00 ft (KB) To 3343.00 ft (KB) (TVD)	
Total Depth:	3343.00 ft (KB) (TVD)	
Hole Diameter:	7.88 inches	Hole Condition: Good
		Reference Elevations:
		1977.00 ft (KB)
		1969.00 ft (CF)
		KB to GR/CF: 8.00 ft

Serial #: 8737	Outside		
Press@RunDepth:	psig @	3315.00 ft (KB)	Capacity: 8000.00 psig
Start Date:	2011.11.15	End Date: 2011.11.15	Last Calib.: 2011.11.15
Start Time:	13:49:02	End Time: 20:55:01	Time On Btm:
			Time Off Btm:

TEST COMMENT: IFP-10-Min-Weak blow built to 2 in
 ISI-60-Min-Weak surface blow back
 FFP-30-Min-Weak blow built to 3 1/8 in
 FSI-90-Min-Dead no blow back



PRESSURE SUMMARY

Time (Min.)	Pressure (psig)	Temp (deg F)	Annotation

Recovery

Length (ft)	Description	Volume (bbl)
20.00	WM with oil spots 10%W90%M	0.10

Gas Rates

Choke (inches)	Pressure (psig)	Gas Rate (Mcf/d)

* Recovery from multiple tests



**TRILOBITE
TESTING, INC.**

DRILL STEM TEST REPORT

TOOL DIAGRAM

Sam Gary Jr & Associates

34-16s-16w-Rush

1515 Wynkoop St
Suite 700 Denver Co 80202

Tuzicka-Dewald 1-34

Job Ticket: 44875

DST#: 2

ATTN:

Test Start: 2011.11.15 @ 13:49:01

Tool Information

Drill Pipe:	Length: 3283.00 ft	Diameter: 3.80 inches	Volume: 46.05 bbl	Tool Weight: 2200.00 lb
Heavy Wt. Pipe:	Length: 0.00 ft	Diameter: 2.70 inches	Volume: 0.00 bbl	Weight set on Packer: 22000.00 lb
Drill Collar:	Length: 29.00 ft	Diameter: 2.25 inches	Volume: 0.14 bbl	Weight to Pull Loose: 54000.00 lb
			Total Volume: 46.19 bbl	Tool Chased 0.00 ft
Drill Pipe Above KB:	33.00 ft			String Weight: Initial 50000.00 lb
Depth to Top Packer:	3314.00 ft			Final 51000.00 lb
Depth to Bottom Packer:	ft			
Interval between Packers:	29.00 ft			
Tool Length:	64.00 ft			
Number of Packers:	2	Diameter: 6.75 inches		

Tool Comments:

Tool Description	Length (ft)	Serial No.	Position	Depth (ft)	Accum. Lengths
------------------	-------------	------------	----------	------------	----------------

Recorder	0.00	8679	Fluid	3279.00	
Stubb	5.00			3284.00	
Shut In Tool	5.00			3289.00	
Sampler	3.00			3292.00	
Hydraulic tool	5.00			3297.00	
Jars	5.00			3302.00	
Safety Joint	3.00			3305.00	
Packer	4.00			3309.00	35.00 Bottom Of Top Packer
Packer	5.00			3314.00	
Stubb	1.00			3315.00	
Recorder	0.00	8321	Inside	3315.00	
Recorder	0.00	8737	Outside	3315.00	
Perforations	25.00			3340.00	
Bullnose	3.00			3343.00	29.00 Bottom Packers & Anchor

Total Tool Length: 64.00



**TRILOBITE
TESTING, INC.**

DRILL STEM TEST REPORT

FLUID SUMMARY

Sam Gary Jr & Associates

34-16s-16w-Rush

1515 Wynkoop St
Suite 700 Denver Co 80202

Tuzicka-Dewald 1-34

Job Ticket: 44875

DST#: 2

ATTN:

Test Start: 2011.11.15 @ 13:49:01

Mud and Cushion Information

Mud Type: Gel Chem

Cushion Type:

Oil API:

deg API

Mud Weight: 9.00 lb/gal

Cushion Length:

ft

Water Salinity:

ppm

Viscosity: 58.00 sec/qt

Cushion Volume:

bbbl

Water Loss: 6.79 in³

Gas Cushion Type:

Resistivity: ohm.m

Gas Cushion Pressure:

psig

Salinity: 6500.00 ppm

Filter Cake: inches

Recovery Information

Recovery Table

Length ft	Description	Volume bbl
20.00	WM with oil spots 10%W90%M	0.098

Total Length: 20.00 ft Total Volume: 0.098 bbl

Num Fluid Samples: 0

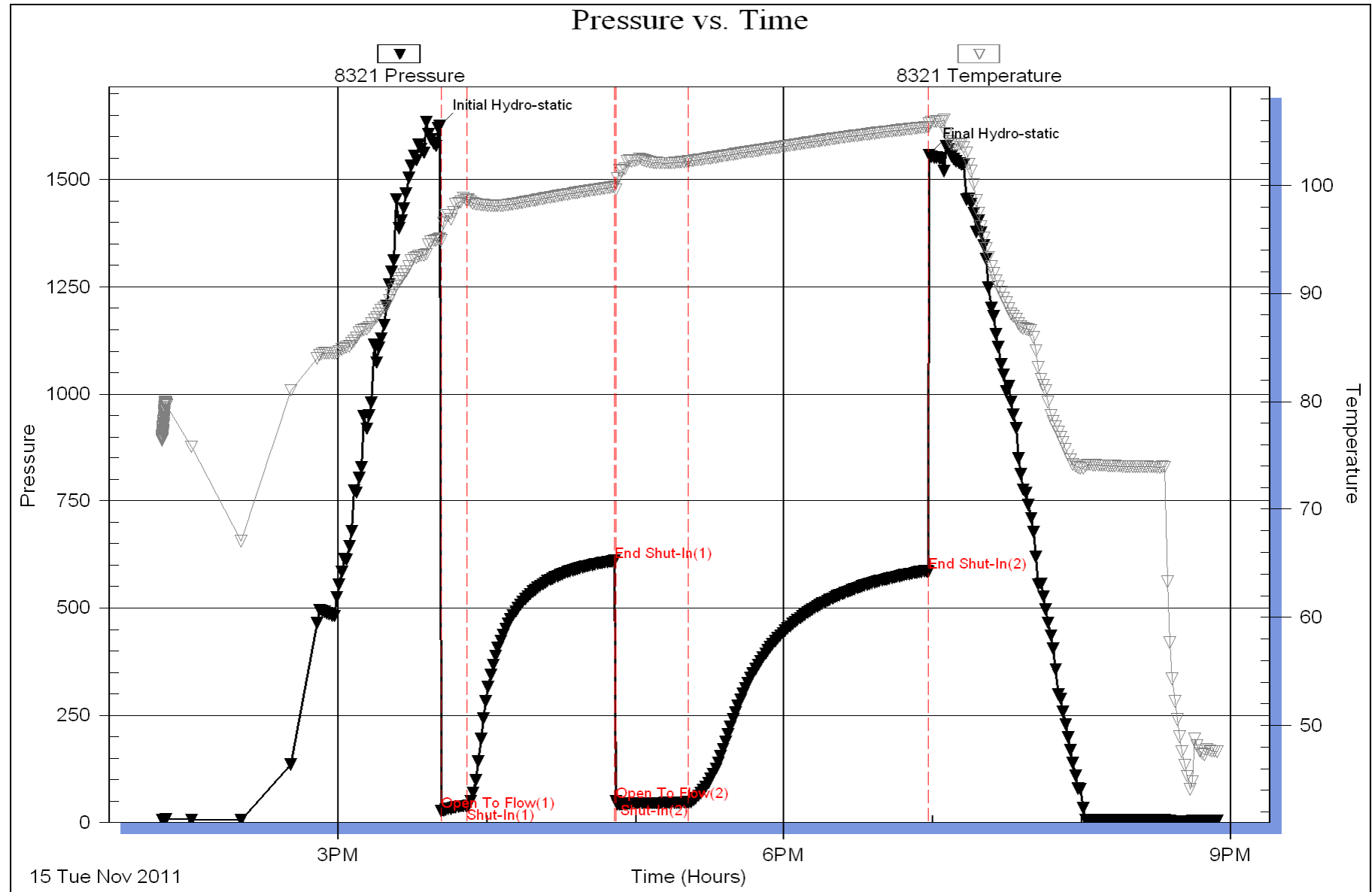
Num Gas Bombs: 0

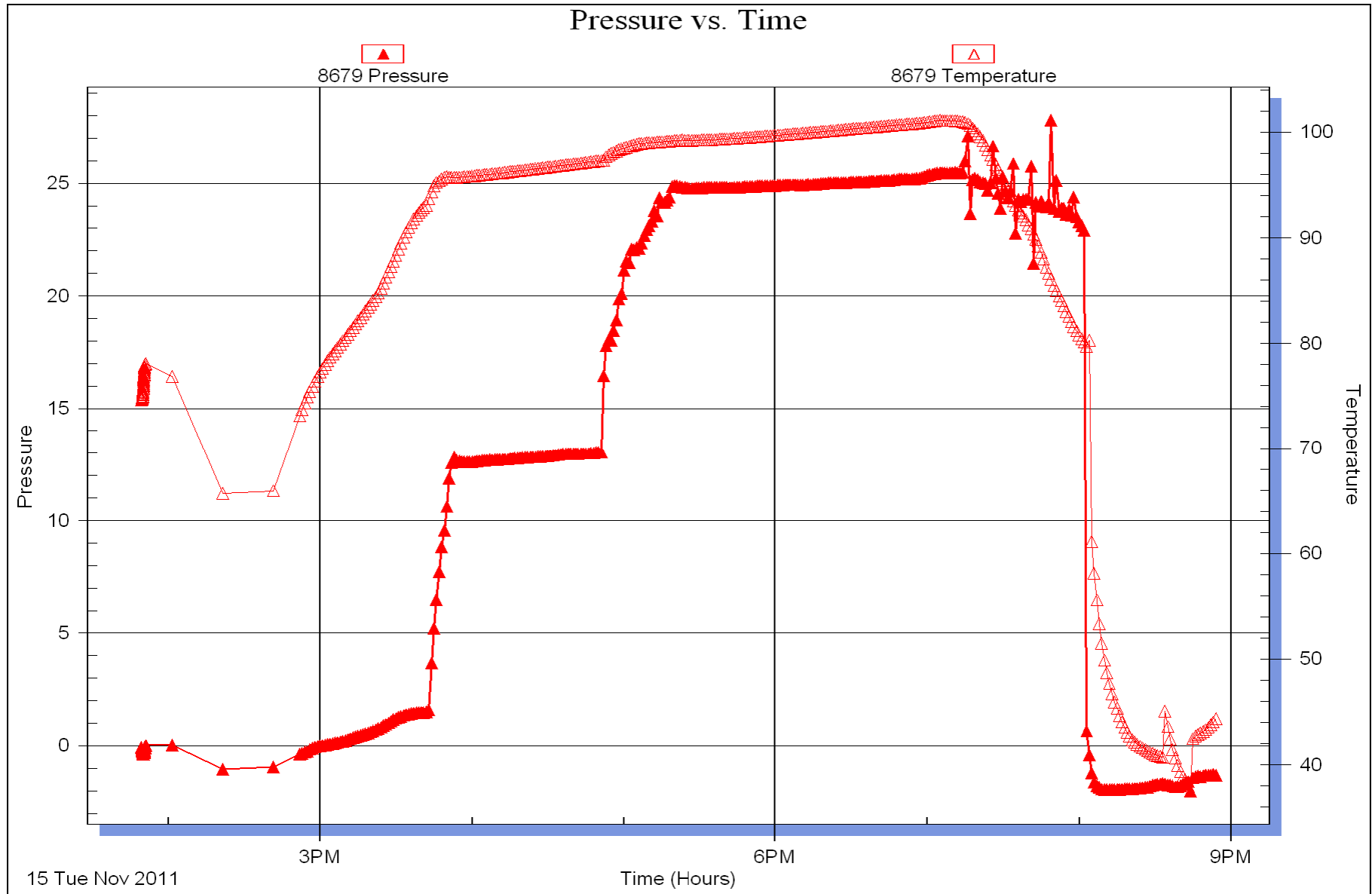
Serial #:

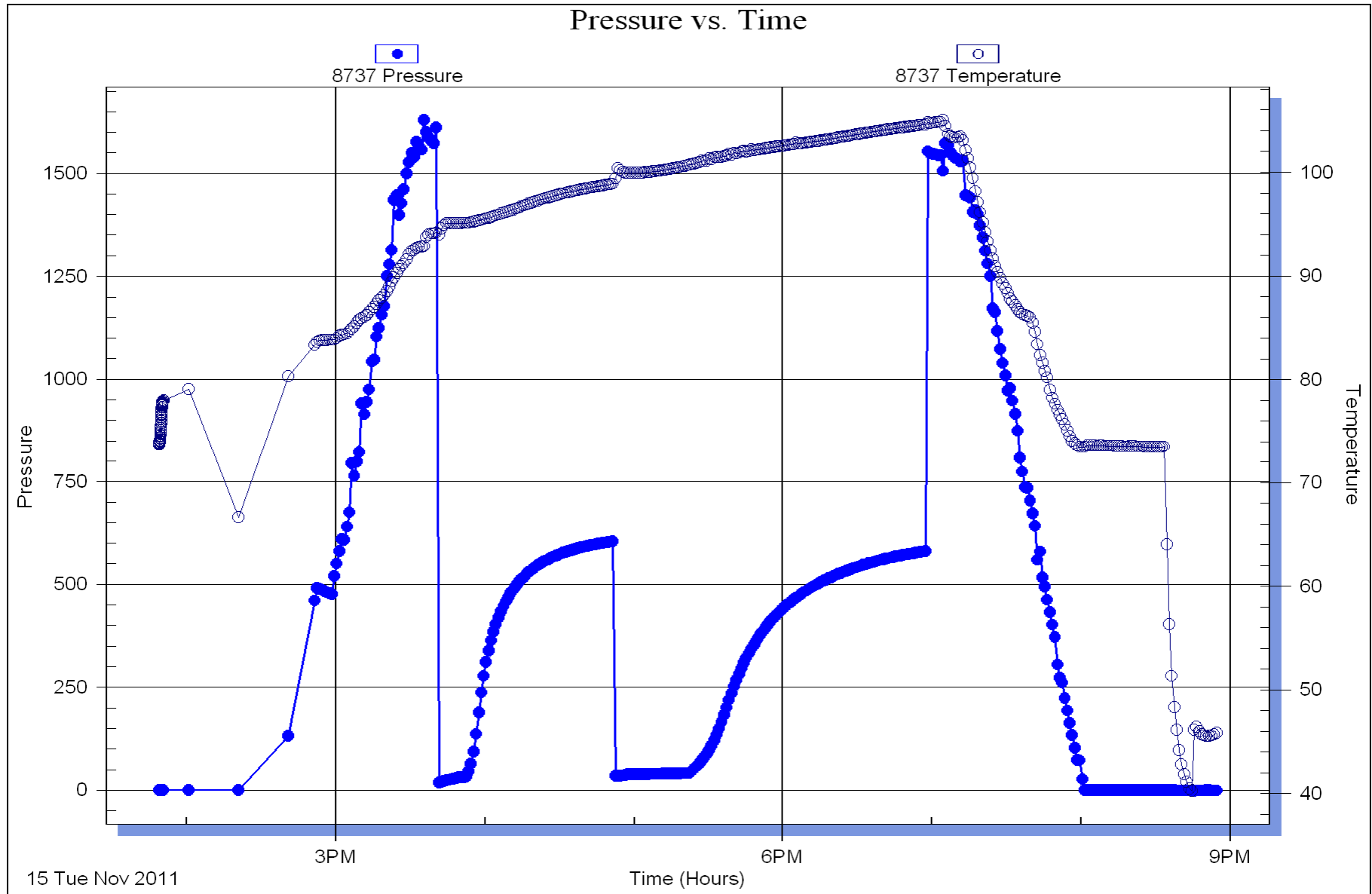
Laboratory Name:

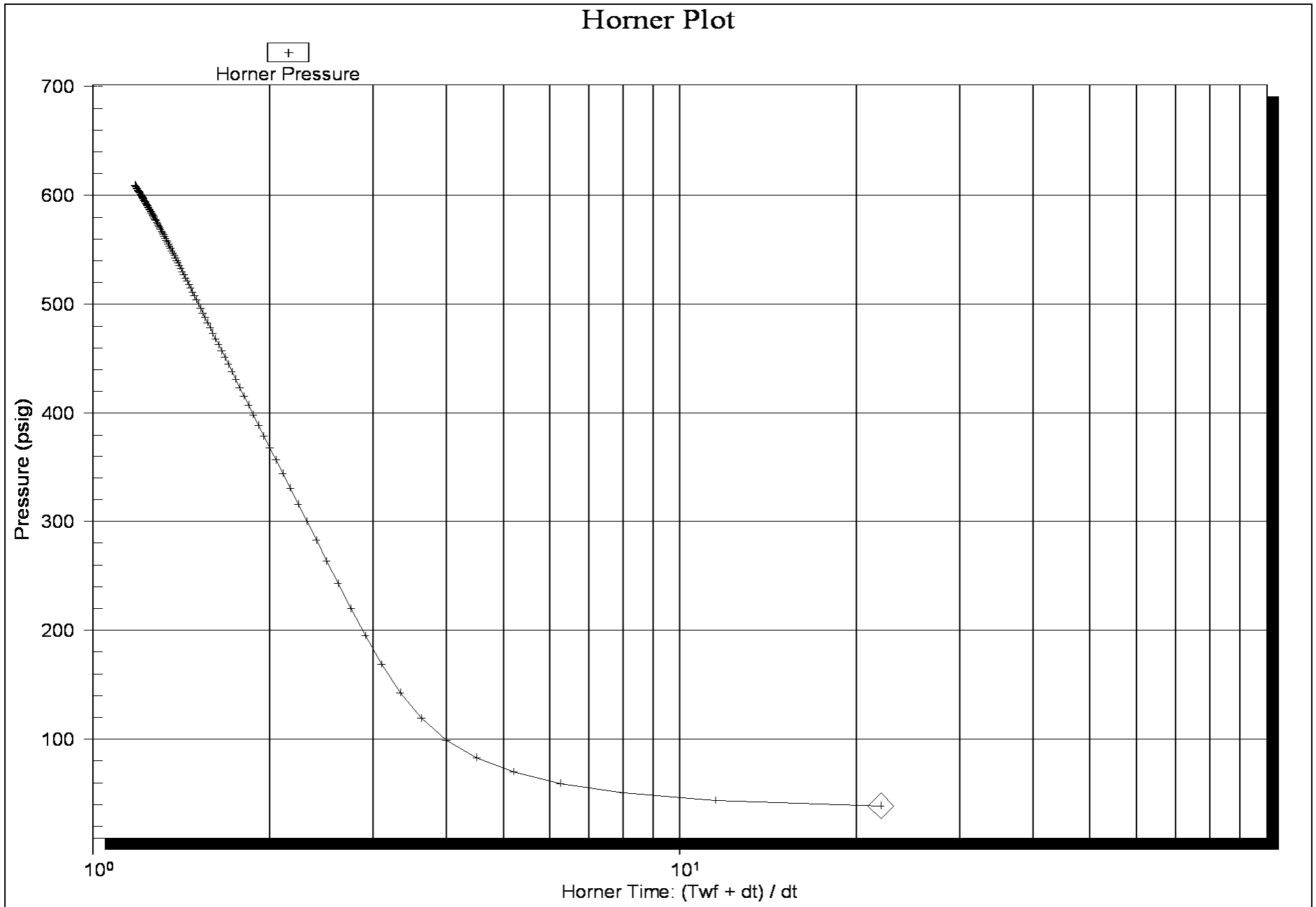
Laboratory Location:

Recovery Comments: 3500 MI Of total fluid 280 PSI
1500 MI of Water 2000 MI of mud Oil spots
3-MW with oil spots









Horner Plot

