



DRILL STEM TEST REPORT

Prepared For: **Trans Pacific Oil Corporation**

100 S Main
Suite 200
Wichita, Kansas 67202+3735

ATTN: Max Lovely

32/17S/24W/Ness

Michaelis #2

Start Date: 2011.12.28 @ 16:28:00

End Date: 2011.12.29 @ 01:33:00

Job Ticket #: 18813 DST #: 2

Superior Testers Enterprises LLC
PO Box 138 Great Bend KS 67530
1-800-792-6902

Printed: 2011.12.29 @ 00:01:57

Trans Pacific Oil Corporation

Michaelis #2

32/17S/24W/Ness

DST # 2

Cherokee Sand

2011.12.28



DRILL STEM TEST REPORT

Trans Pacific Oil Corporation
 100 S Main
 Suite 200
 Wichita, Kansas 67202+3735
 ATTN: Max Lovely

Michaelis #2
32/17S/24W/Ness
 Job Ticket: 18813 **DST#: 2**
 Test Start: 2011.12.28 @ 16:28:00

GENERAL INFORMATION:

Formation: **Cherokee Sand**
 Deviated: No Whipstock: ft (KB)
 Time Tool Opened: 18:26:30
 Time Test Ended: 01:33:00
 Interval: **4281.00 ft (KB) To 4319.00 ft (KB) (TVD)**
 Total Depth: 4319.00 ft (KB) (TVD)
 Hole Diameter: 7.88 inches Hole Condition: Fair
 Test Type: Conventional Bottom Hole (Initial)
 Tester: Ken Swinney
 Unit No: 3325 Great Bend/148
 Reference Elevations: 2337.00 ft (KB)
 2328.00 ft (CF)
 KB to GR/CF: 9.00 ft

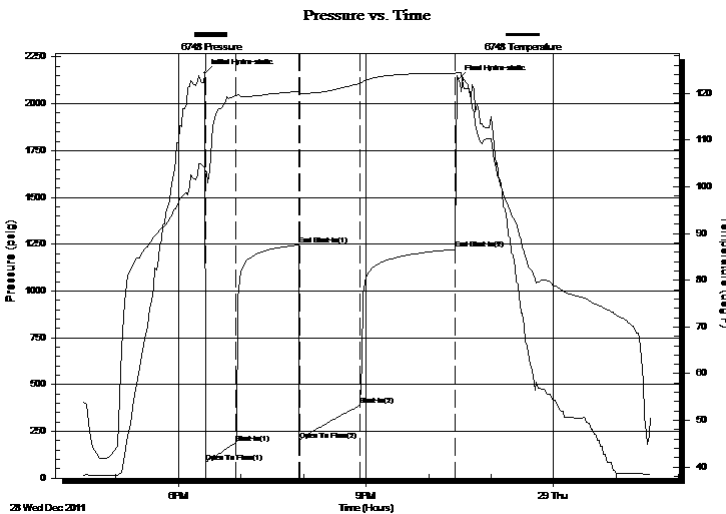
Serial #: 6748

Inside

Press @ Run Depth: 388.80 psig @ 4315.00 ft (KB) Capacity: 5000.00 psig
 Start Date: 2011.12.28 End Date: 2011.12.29 Last Calib.: 2011.12.28
 Start Time: 16:28:00 End Time: 01:33:00 Time On Btm: 2011.12.28 @ 18:25:30
 Time Off Btm: 2011.12.28 @ 22:28:30

TEST COMMENT: 1ST Open 30 Minutes/Good blow /Blow to bottom of bucket in 6 minutes
 1ST Shut In 60 Minutes/Blow back built to 3 1/2 inches
 2ND Open 60 Minutes/Good blow /Blow to bottom of bucket in 7 minutes
 2ND Shut In 90 Minutes/Blow back built just below surface

PRESSURE SUMMARY



Time (Min.)	Pressure (psig)	Temp (deg F)	Annotation
0	2163.68	104.08	Initial Hydro-static
1	83.48	103.28	Open To Flow (1)
30	188.08	119.57	Shut-In(1)
90	1244.88	120.37	End Shut-In(1)
91	201.96	120.06	Open To Flow (2)
149	388.80	122.18	Shut-In(2)
241	1222.41	124.29	End Shut-In(2)
243	2130.20	124.41	Final Hydro-static

Recovery

Length (ft)	Description	Volume (bbl)
0.00	180 feet Gas in pipe 100%	0.00
732.00	Clean Gassy Oil	10.70
0.00	Gas 20% Oil 80%	0.00
180.00	Oil cut Gassy Mud	2.63
0.00	Oil 10% Gas 25% Mud 65%	0.00
0.00	Corrected Gravity of oil 38	0.00

Gas Rates

Choke (inches)	Pressure (psig)	Gas Rate (Mcf/d)



DRILL STEM TEST REPORT

Trans Pacific Oil Corporation
 100 S Main
 Suite 200
 Wichita, Kansas 67202+3735
 ATTN: Max Lovely

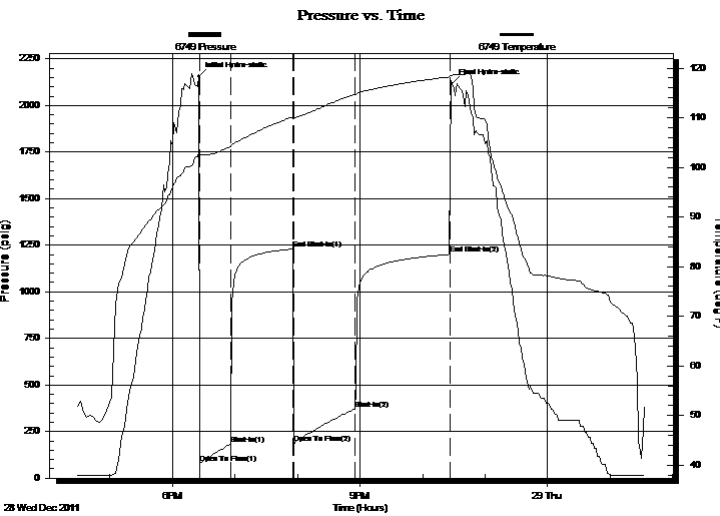
Michaelis #2
32/17S/24W/Ness
 Job Ticket: 18813 **DST#: 2**
 Test Start: 2011.12.28 @ 16:28:00

GENERAL INFORMATION:

Formation: **Cherokee Sand**
 Deviated: No Whipstock: ft (KB)
 Test Type: Conventional Bottom Hole (Initial)
 Time Tool Opened: 18:26:30 Tester: Ken Swinney
 Time Test Ended: 01:33:00 Unit No: 3325 Great Bend/148
 Interval: **4281.00 ft (KB) To 4319.00 ft (KB) (TVD)** Reference Elevations: 2337.00 ft (KB)
 Total Depth: 4319.00 ft (KB) (TVD) 2328.00 ft (CF)
 Hole Diameter: 7.88 inches Hole Condition: Fair KB to GR/CF: 9.00 ft

Serial #: 6749 Outside
 Press @ Run Depth: 1200.87 psig @ 4316.00 ft (KB) Capacity: 5000.00 psig
 Start Date: 2011.12.28 End Date: 2011.12.29 Last Calib.: 2011.12.28
 Start Time: 16:28:00 End Time: 01:33:00 Time On Btm: 2011.12.28 @ 18:25:30
 Time Off Btm: 2011.12.28 @ 22:28:00

TEST COMMENT: 1ST Open 30 Minutes/Good blow /Blow to bottom of bucket in 6 minutes
 1ST Shut In 60 Minutes/Blow back built to 3 1/2 inches
 2ND Open 60 Minutes/Good blow /Blow to bottom of bucket in 7 minutes
 2ND Shut In 90 Minutes/Blow back built just below surface



PRESSURE SUMMARY			
Time (Min.)	Pressure (psig)	Temp (deg F)	Annotation
0	2155.01	103.19	Initial Hydro-static
1	76.79	102.63	Open To Flow (1)
30	183.23	104.21	Shut-In(1)
90	1229.61	110.14	End Shut-In(1)
91	188.24	109.98	Open To Flow (2)
150	372.09	114.65	Shut-In(2)
241	1200.87	118.25	End Shut-In(2)
243	2116.96	118.59	Final Hydro-static

Recovery		
Length (ft)	Description	Volume (bbl)
0.00	180 feet Gas in pipe 100%	0.00
732.00	Clean Gassy Oil	10.70
0.00	Gas 20% Oil 80%	0.00
180.00	Oil cut Gassy Mud	2.63
0.00	Oil 10% Gas 25% Mud 65%	0.00
0.00	Corrected Gravity of oil 38	0.00

Gas Rates			
	Choke (inches)	Pressure (psig)	Gas Rate (Mcf/d)



DRILL STEM TEST REPORT

TOOL DIAGRAM

Trans Pacific Oil Corporation

Michaelis #2

100 S Main
 Suite 200
 Wichita, Kansas 67202+3735
 ATTN: Max Lovely

32/17S/24W/Ness

Job Ticket: 18813

DST#: 2

Test Start: 2011.12.28 @ 16:28:00

Tool Information

Drill Pipe:	Length: 4284.00 ft	Diameter: 3.88 inches	Volume: 62.65 bbl	Tool Weight:	2000.00 lb
Heavy Wt. Pipe:	Length: 0.00 ft	Diameter: 0.00 inches	Volume: 0.00 bbl	Weight set on Packer:	20000.00 lb
Drill Collar:	Length: 0.00 ft	Diameter: 0.00 inches	Volume: 0.00 bbl	Weight to Pull Loose:	60000.00 lb
			<u>Total Volume: 62.65 bbl</u>	Tool Chased	0.00 ft
Drill Pipe Above KB:	32.00 ft			String Weight: Initial	53000.00 lb
Depth to Top Packer:	4281.00 ft			Final	56000.00 lb
Depth to Bottom Packer:	ft				
Interval between Packers:	38.00 ft				
Tool Length:	67.00 ft				
Number of Packers:	2	Diameter: 6.75 inches			

Tool Comments:

Tool Description	Length (ft)	Serial No.	Position	Depth (ft)	Accum. Lengths
-------------------------	--------------------	-------------------	-----------------	-------------------	-----------------------

Shut-in tool	5.00			4257.00	
Hydraulic tool	5.00			4262.00	
Change over sub	1.00			4263.00	
Jars	6.00			4269.00	
Safety Joint	2.00			4271.00	
Packer	5.00			4276.00	29.00 Bottom Of Top Packer
Packer	5.00			4281.00	
Anchor	33.00			4314.00	
Recorder	1.00	6748	Inside	4315.00	
Recorder	1.00	6749	Outside	4316.00	
Bullnose	3.00			4319.00	38.00 Bottom Packers & Anchor

Total Tool Length: 67.00



DRILL STEM TEST REPORT

FLUID SUMMARY

Trans Pacific Oil Corporation
 100 S Main
 Suite 200
 Wichita, Kansas 67202+3735
 ATTN: Max Lovely

Michaelis #2
32/17S/24W/Ness
 Job Ticket: 18813 **DST#: 2**
 Test Start: 2011.12.28 @ 16:28:00

Mud and Cushion Information

Mud Type: Gel Chem	Cushion Type:	Oil API:	deg API
Mud Weight: 9.00 lb/gal	Cushion Length: ft	Water Salinity:	ppm
Viscosity: 7.00 sec/qt	Cushion Volume: bbl		
Water Loss: 9.19 in ³	Gas Cushion Type:		
Resistivity: ohm.m	Gas Cushion Pressure: psig		
Salinity: 7000.00 ppm			
Filter Cake: 1.00 inches			

Recovery Information

Recovery Table

Length ft	Description	Volume bbl
0.00	180 feet Gas in pipe 100%	0.000
732.00	Clean Gassy Oil	10.705
0.00	Gas 20% Oil 80%	0.000
180.00	Oil cut Gassy Mud	2.632
0.00	Oil 10% Gas 25% Mud 65%	0.000
0.00	Corrected Gravity of oil 38	0.000

Total Length: 912.00 ft Total Volume: 13.337 bbl
 Num Fluid Samples: 0 Num Gas Bombs: 0 Serial #:
 Laboratory Name: Laboratory Location:
 Recovery Comments:

Serial #: 6748

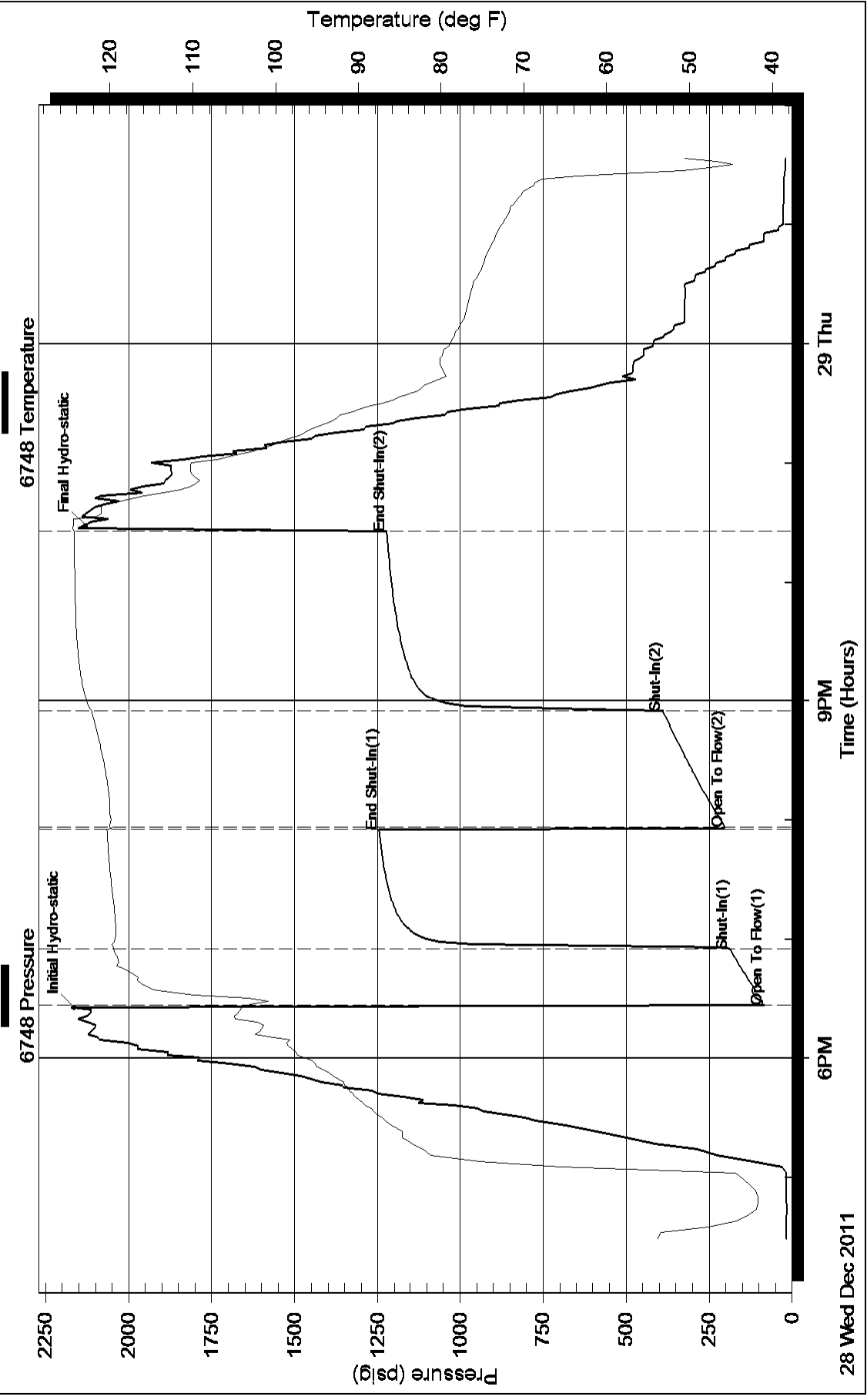
Inside

Trans Pacific Oil Corporation

32/17S24W/Nless

DST Test Number: 2

Pressure vs. Time



Serial #: 6749

Outside

Trans Pacific Oil Corporation

32/17S24W/Ness

DST Test Number: 2

Pressure vs. Time

