



TRILOBITE TESTING, INC.

DRILL STEM TEST REPORT

Cholla Production LLC

35-19s-20w Rush

7851 A Elati St Ste 201
Littleton, Co 80120

Miller 1-35

Job Ticket: 45284

DST#: 3

ATTN: Clayton Erickson

Test Start: 2011.11.10 @ 08:51:06

GENERAL INFORMATION:

Formation: **Miss**

Deviated: No Whipstock: ft (KB)

Time Tool Opened: 10:27:36

Time Test Ended: 14:21:06

Test Type: Conventional Bottom Hole (Reset)

Tester: Brandon Turley

Unit No: 35

Interval: 4436.00 ft (KB) To 4480.00 ft (KB) (TVD)

Reference Elevations: 2276.00 ft (KB)

Total Depth: 4552.00 ft (KB) (TVD)

2271.00 ft (CF)

Hole Diameter: 7.88 inches Hole Condition: Good

KB to GR/CF: 5.00 ft

Serial #: 8373 Inside

Press @ Run Depth: 478.31 psig @ 4437.00 ft (KB)

Capacity: 8000.00 psig

Start Date: 2011.11.10

End Date:

2011.11.10

Last Calib.: 2011.11.10

Start Time: 08:51:11

End Time:

14:21:05

Time On Btm: 2011.11.10 @ 10:23:36

Time Off Btm: 2011.11.10 @ 11:53:06

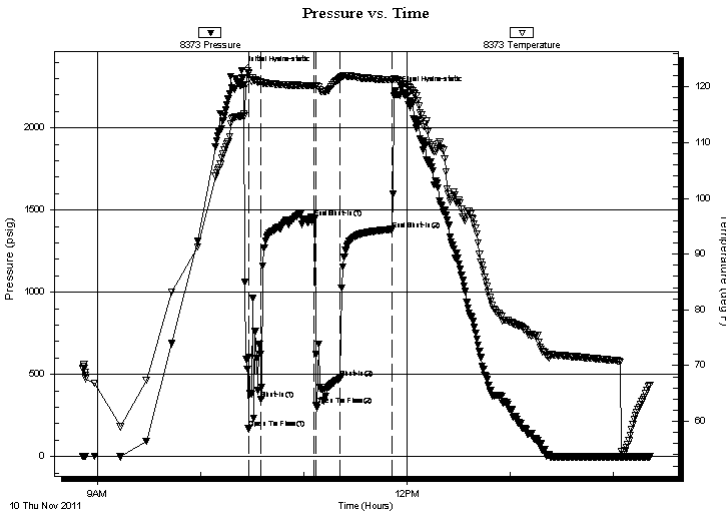
TEST COMMENT: IF: BOB in 30 sec.

IS: No return.

FF: BOB in 3 min.

FS: No return.

PRESSURE SUMMARY



Time (Min.)	Pressure (psig)	Temp (deg F)	Annotation
0	2350.28	114.82	Initial Hydro-static
4	170.06	122.52	Open To Flow (1)
12	350.24	120.71	Shut-In(1)
43	1453.79	120.22	End Shut-In(1)
44	314.05	120.15	Open To Flow (2)
58	478.31	121.55	Shut-In(2)
88	1381.91	121.24	End Shut-In(2)
90	2224.09	121.35	Final Hydro-static

Recovery

Length (ft)	Description	Volume (bbl)
186.00	mcw 70%w 30%m	1.50
186.00	w cm 20%w 80%m	2.61
186.00	w cm 10%w 90%m	2.61
298.00	mud 100%m	4.18

Gas Rates

	Choke (inches)	Pressure (psig)	Gas Rate (Mcf/d)

* Recovery from multiple tests



**TRILOBITE
TESTING, INC.**

DRILL STEM TEST REPORT

FLUID SUMMARY

Cholla Production LLC

35-19s-20w Rush

7851 A Elati St Ste 201
Littleton, Co 80120

Miller 1-35

Job Ticket: 45284

DST#: 3

ATTN: Clayton Erickson

Test Start: 2011.11.10 @ 08:51:06

Mud and Cushion Information

Mud Type: Gel Chem

Cushion Type:

Oil API:

0 deg API

Mud Weight: 10.00 lb/gal

Cushion Length:

ft

Water Salinity:

22000 ppm

Viscosity: 59.00 sec/qt

Cushion Volume:

bbf

Water Loss: 7.98 in³

Gas Cushion Type:

Resistivity: 0.00 ohm.m

Gas Cushion Pressure:

psig

Salinity: 5400.00 ppm

Filter Cake: 1.00 inches

Recovery Information

Recovery Table

Length ft	Description	Volume bbf
186.00	mcw 70%w 30%m	1.498
186.00	w cm 20%w 80%m	2.609
186.00	w cm 10%w 90%m	2.609
298.00	mud 100%m	4.180

Total Length: 856.00 ft Total Volume: 10.896 bbf

Num Fluid Samples: 0

Num Gas Bombs: 0

Serial #:

Laboratory Name:

Laboratory Location:

Recovery Comments: .37@60=22000

Pressure vs. Time

