



**TRILOBITE
TESTING, INC.**

DRILL STEM TEST REPORT

Berexco LLC
2020 North Bramblewood
Wichita Ks 67206
ATTN: Bruce Meyer

31-14s-14w Russell
Solbach North #4
Job Ticket: 46256 **DST#: 1**
Test Start: 2012.03.01 @ 09:10:10

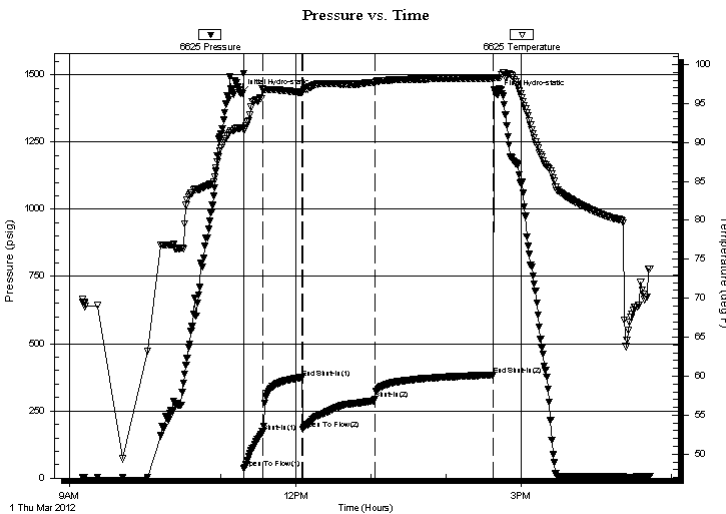
GENERAL INFORMATION:

Formation: **LKC B-G**
Deviated: No Whipstock: ft (KB)
Time Tool Opened: 11:19:05
Time Test Ended: 16:43:04
Interval: **2970.00 ft (KB) To 3055.00 ft (KB) (TVD)**
Total Depth: 3055.00 ft (KB) (TVD)
Hole Diameter: 7.85 inches Hole Condition: Fair
Test Type: Conventional Bottom Hole (Initial)
Tester: Ray Schwager
Unit No: 42
Reference Elevations: 1788.00 ft (KB)
1777.00 ft (CF)
KB to GR/CF: 11.00 ft

Serial #: 6625 Inside
Press @ Run Depth: 292.34 psig @ 2972.00 ft (KB) Capacity: 8000.00 psig
Start Date: 2012.03.01 End Date: 2012.03.01 Last Calib.: 2012.03.01
Start Time: 09:10:10 End Time: 16:43:04 Time On Btm: 2012.03.01 @ 11:16:35
Time Off Btm: 2012.03.01 @ 14:41:04

TEST COMMENT: 15-IFP-w k to a gd bl 1/2"to9"bl
30-ISIP-no bl
60-FFP-w k to a fr bl 1/2"to 4"bl
90-FSIP-no bl

PRESSURE SUMMARY



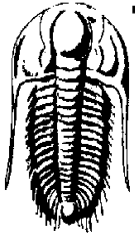
Time (Min.)	Pressure (psig)	Temp (deg F)	Annotation
0	1430.93	91.86	Initial Hydro-static
3	36.69	91.64	Open To Flow (1)
18	171.94	96.87	Shut-In(1)
49	370.93	96.45	End Shut-In(1)
49	181.39	96.50	Open To Flow (2)
107	292.34	97.70	Shut-In(2)
201	383.46	98.23	End Shut-In(2)
205	1425.20	98.29	Final Hydro-static

Recovery

Length (ft)	Description	Volume (bbl)
210.00	SO&GCMW 13%G2%O40%M45%W	1.03
360.00	MW 20%M80%W w/show of oil	2.07

Gas Rates

Choke (inches)	Pressure (psig)	Gas Rate (Mcf/d)



TRILOBITE TESTING, INC.

DRILL STEM TEST REPORT

Berexco LLC
 2020 North Bramblewood
 Wichita Ks 67206
 ATTN: Bruce Meyer

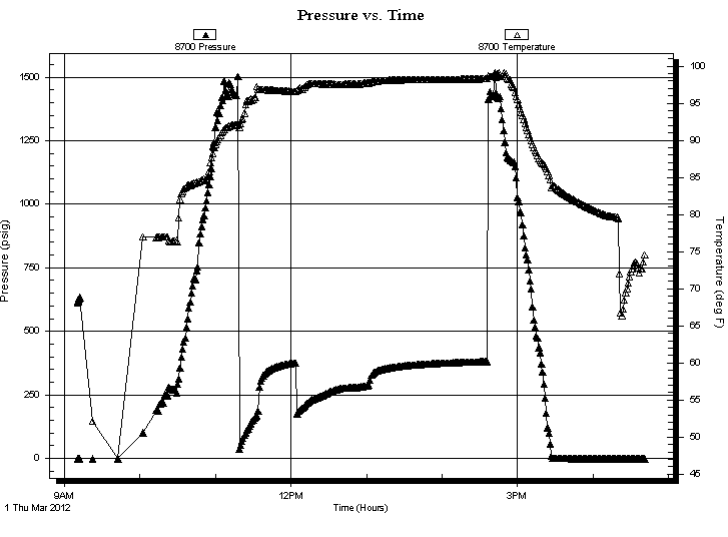
31-14s-14w Russell
Solbach North #4
 Job Ticket: 46256 **DST#: 1**
 Test Start: 2012.03.01 @ 09:10:10

GENERAL INFORMATION:

Formation: **LKC B-G**
 Deviated: No Whipstock: ft (KB)
 Test Type: Conventional Bottom Hole (Initial)
 Time Tool Opened: 11:19:05 Tester: Ray Schwager
 Time Test Ended: 16:43:04 Unit No: 42
 Interval: **2970.00 ft (KB) To 3055.00 ft (KB) (TVD)** Reference Elevations: 1788.00 ft (KB)
 Total Depth: 3055.00 ft (KB) (TVD) 1777.00 ft (CF)
 Hole Diameter: 7.85 inches Hole Condition: Fair KB to GR/CF: 11.00 ft

Serial #: 8700 Outside
 Press @ Run Depth: psig @ 2972.00 ft (KB) Capacity: 8000.00 psig
 Start Date: 2012.03.01 End Date: 2012.03.01 Last Calib.: 2012.03.01
 Start Time: 09:10:31 End Time: 16:41:25 Time On Btm:
 Time Off Btm:

TEST COMMENT: 15-IFP-w k to a gd bl 1/2"to9"bl
 30-ISIP-no bl
 60-FFP-w k to a fr bl 1/2"to 4"bl
 90-FSIP-no bl



PRESSURE SUMMARY

Time (Min.)	Pressure (psig)	Temp (deg F)	Annotation

Recovery

Length (ft)	Description	Volume (bbl)
210.00	SO&GCMW 13%G2%O40%M45%W	1.03
360.00	MW 20%M80%W w/show of oil	2.07

Gas Rates

	Choke (inches)	Pressure (psig)	Gas Rate (Mcf/d)



**TRILOBITE
TESTING, INC.**

DRILL STEM TEST REPORT

FLUID SUMMARY

Berexco LLC
2020 North Bramblewood
Wichita Ks 67206
ATTN: Bruce Meyer

31-14s-14w Russell
Solbach North #4
Job Ticket: 46256 **DST#: 1**
Test Start: 2012.03.01 @ 09:10:10

Mud and Cushion Information

Mud Type: Gel Chem	Cushion Type:	Oil API:	deg API
Mud Weight: 9.00 lb/gal	Cushion Length: ft	Water Salinity: 50000 ppm	
Viscosity: 50.00 sec/qt	Cushion Volume: bbl		
Water Loss: 9.56 in ³	Gas Cushion Type:		
Resistivity: ohm.m	Gas Cushion Pressure: psig		
Salinity: 4800.00 ppm			
Filter Cake: 1.00 inches			

Recovery Information

Recovery Table

Length ft	Description	Volume bbl
210.00	SO&GCMW 13%G2%O40%M45%W	1.033
360.00	MW 20%M80%W w/show of oil	2.071

Total Length: 570.00 ft Total Volume: 3.104 bbl
 Num Fluid Samples: 0 Num Gas Bombs: 0 Serial #:
 Laboratory Name: Laboratory Location:
 Recovery Comments: RW .16@67F

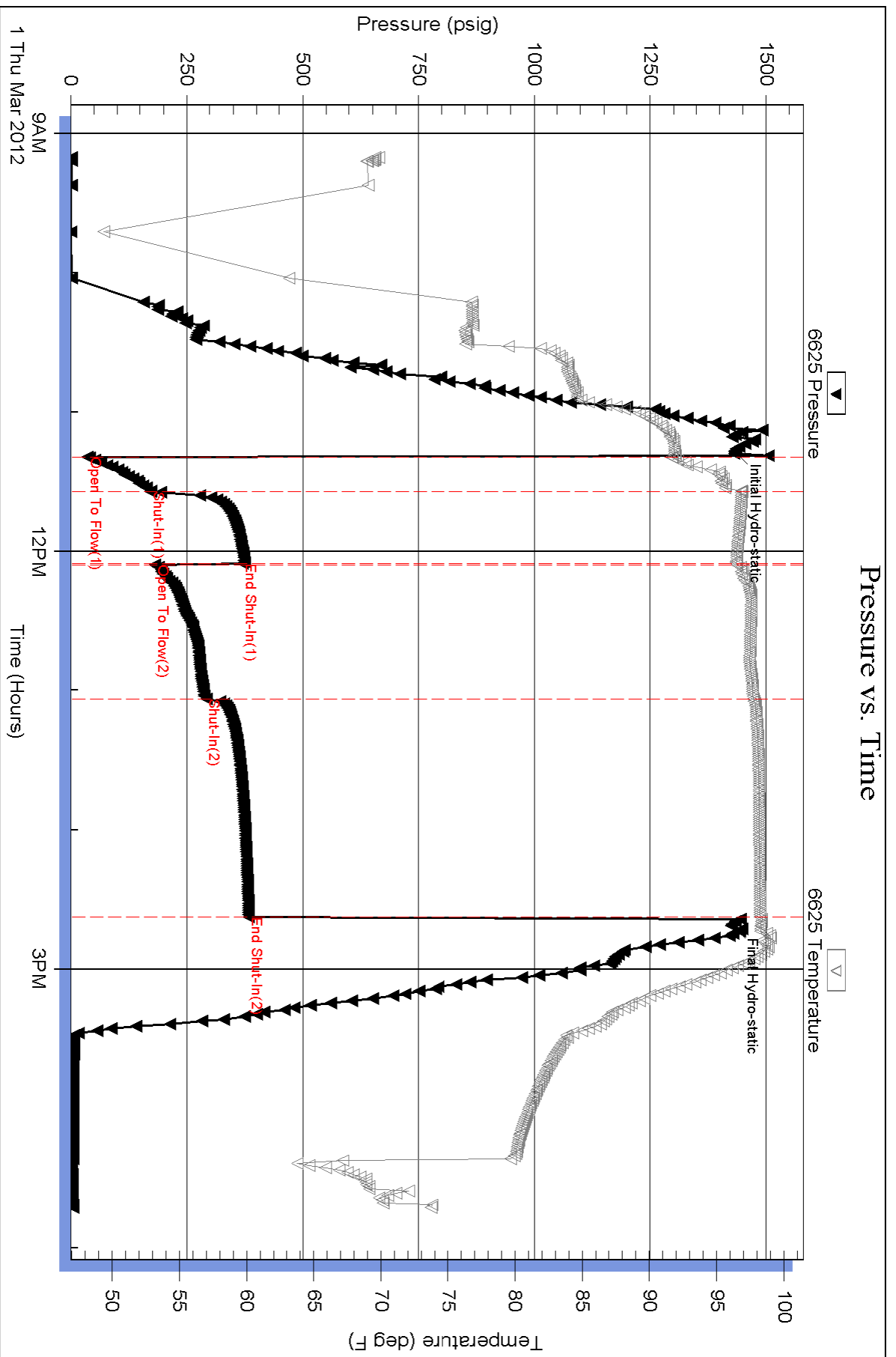
Serial #: 6625

Inside

Berexco LLC

Solbach North #4

DST Test Number: 1



Serial #: 8700

Outside Berexco LLC

Solbach North #4

DST Test Number: 1

