



TRILOBITE TESTING, INC.

DRILL STEM TEST REPORT

Berexco LLC
 2020 North Bramblewood
 Wichita Ks 67206
 ATTN: Bruce Meyer

31-14s-14w Russell
Solbach North #4
 Job Ticket: 46257 **DST#: 2**
 Test Start: 2012.03.02 @ 02:35:22

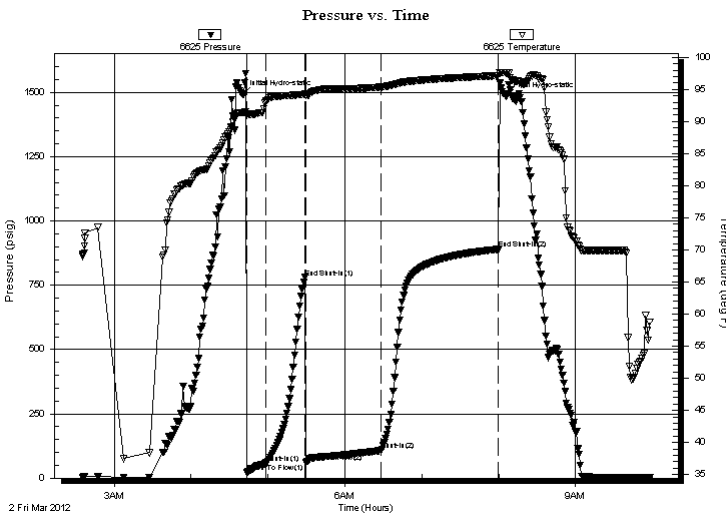
GENERAL INFORMATION:

Formation: **LKC H-K**
 Deviated: No Whipstock: ft (KB)
 Test Type: Conventional Bottom Hole (Reset)
 Time Tool Opened: 04:43:17 Tester: Ray Schwager
 Time Test Ended: 09:58:16 Unit No: 42
 Interval: **3085.00 ft (KB) To 3180.00 ft (KB) (TVD)** Reference Elevations: 1788.00 ft (KB)
 Total Depth: 3180.00 ft (KB) (TVD) 1777.00 ft (CF)
 Hole Diameter: 7.85 inches Hole Condition: Fair KB to GR/CF: 11.00 ft

Serial #: 6625 Inside
 Press @ Run Depth: 107.24 psig @ 3090.00 ft (KB) Capacity: 8000.00 psig
 Start Date: 2012.03.02 End Date: 2012.03.02 Last Calib.: 2012.03.02
 Start Time: 02:35:22 End Time: 09:58:16 Time On Btm: 2012.03.02 @ 04:40:17
 Time Off Btm: 2012.03.02 @ 08:05:46

TEST COMMENT: 15-IFP-w k to a gd bl 1/2" to 6" bl
 30-ISIP-no bl
 60-FFP-strg bl in 1min
 90-FSIP-surface bl bk

PRESSURE SUMMARY



Time (Min.)	Pressure (psig)	Temp (deg F)	Annotation
0	1491.78	91.41	Initial Hydro-static
3	21.54	91.21	Open To Flow (1)
18	56.92	93.09	Shut-In(1)
49	779.64	94.25	End Shut-In(1)
50	60.39	94.10	Open To Flow (2)
108	107.24	95.38	Shut-In(2)
200	889.88	97.14	End Shut-In(2)
206	1484.57	97.56	Final Hydro-static

Recovery

Length (ft)	Description	Volume (bbl)
0.00	680'GIP	0.00
200.00	GMO 20%G35%M45%O	0.98

* Recovery from multiple tests

Gas Rates

Choke (inches)	Pressure (psig)	Gas Rate (Mcf/d)



**TRILOBITE
TESTING, INC.**

DRILL STEM TEST REPORT

FLUID SUMMARY

Berexco LLC
2020 North Bramblewood
Wichita Ks 67206
ATTN: Bruce Meyer

31-14s-14w Russell
Solbach North #4
Job Ticket: 46257 **DST#: 2**
Test Start: 2012.03.02 @ 02:35:22

Mud and Cushion Information

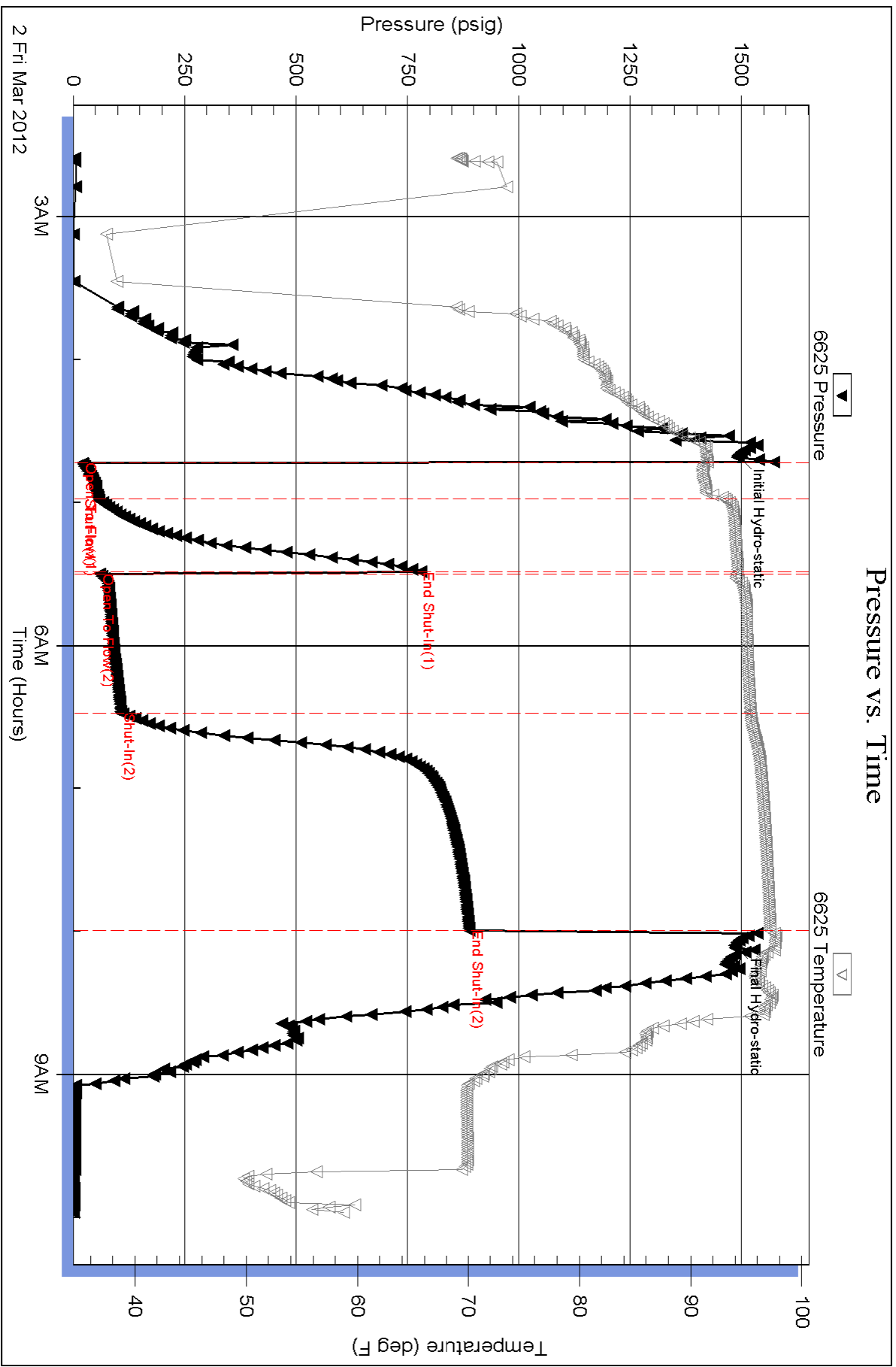
Mud Type: Gel Chem	Cushion Type:	Oil API:	deg API
Mud Weight: 9.00 lb/gal	Cushion Length: ft	Water Salinity:	ppm
Viscosity: 53.00 sec/qt	Cushion Volume: bbl		
Water Loss: 9.57 in ³	Gas Cushion Type:		
Resistivity: ohm.m	Gas Cushion Pressure: psig		
Salinity: 4800.00 ppm			
Filter Cake: 1.00 inches			

Recovery Information

Recovery Table

Length ft	Description	Volume bbl
0.00	680'GIP	0.000
200.00	GMO 20%G35%M45%O	0.984

Total Length: 200.00 ft Total Volume: 0.984 bbl
 Num Fluid Samples: 0 Num Gas Bombs: 0 Serial #:
 Laboratory Name: Laboratory Location:
 Recovery Comments:



Serial #: 8700

Outside Berexco LLC

Solbach North #4

DST Test Number: 2

