

TRILOBITE
TESTING, INC.

DRILL STEM TEST REPORT

Prepared For: **Hartman Oil Co., Inc.**

10500 E. Berkeley Sq.
Suite 100
Wichita, KS 67206

ATTN: Kitt Noah

Damme #46

S28-22s-33w Finney, KS

Start Date: 2012.03.12 @ 00:07:00

End Date: 2012.03.12 @ 09:29:49

Job Ticket #: 45090 DST #: 1

Trilobite Testing, Inc

PO Box 362 Hays, KS 67601

ph: 785-625-4778 fax: 785-625-5620

Printed: 2012.03.15 @ 13:21:16

Hartman Oil Co., Inc.
S28-22s-33w Finney, KS
Damme #46
DST # 1
Morrow Sand
2012.03.12



**TRILOBITE
TESTING, INC**

DRILL STEM TEST REPORT

Hartman Oil Co., Inc.

S28-22s-33w Finney, KS

10500 E. Berkeley Sq.
Suite 100
Wichita, KS 67206
ATTN: Kitt Noah

Damme #46

Job Ticket: 45090

DST#: 1

Test Start: 2012.03.12 @ 00:07:00

GENERAL INFORMATION:

Formation: **Morrow Sand**

Deviated: No Whipstock: ft (KB)

Time Tool Opened: 04:38:00

Time Test Ended: 09:29:49

Test Type: Conventional Bottom Hole (Initial)

Tester: Chuck Smith

Unit No: 37

Interval: 4643.00 ft (KB) To 4728.00 ft (KB) (TVD)

Reference Elevations: 2896.00 ft (KB)

Total Depth: 4728.00 ft (KB) (TVD)

2886.00 ft (CF)

Hole Diameter: 7.88 inches Hole Condition: Good

KB to GR/CF: 10.00 ft

Serial #: 8018

Inside

Press @ Run Depth: 71.39 psig @ 4647.00 ft (KB)

Capacity: 8000.00 psig

Start Date: 2012.03.12

End Date:

2012.03.12

Last Calib.:

2012.03.12

Start Time: 00:07:02

End Time:

09:29:49

Time On Btm:

2012.03.12 @ 04:35:30

Time Off Btm:

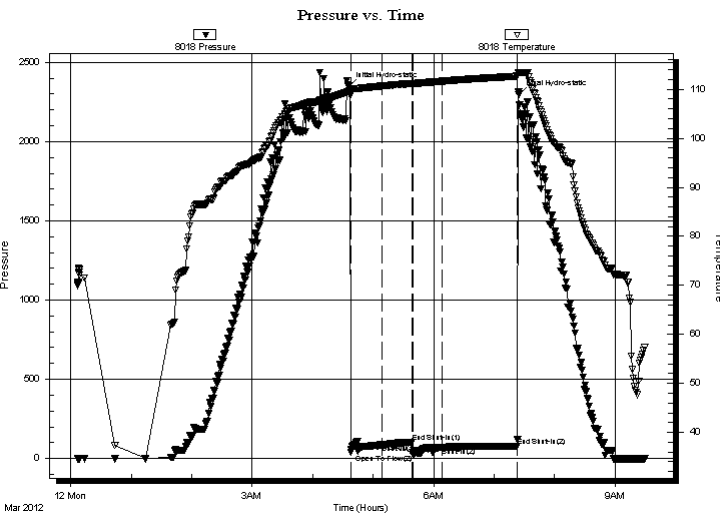
2012.03.12 @ 07:24:20

TEST COMMENT: Surface blow died @ 15 min.

No return.

No blow.

No return.



PRESSURE SUMMARY

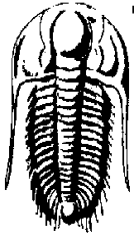
Time (Min.)	Pressure (psig)	Temp (deg F)	Annotation
0	2346.77	109.52	Initial Hydro-static
3	39.27	109.00	Open To Flow (1)
33	87.45	110.64	Shut-In(1)
63	102.61	111.18	End Shut-In(1)
64	28.17	111.13	Open To Flow (2)
93	71.39	111.64	Shut-In(2)
168	78.16	112.66	End Shut-In(2)
169	2298.21	113.30	Final Hydro-static

Recovery

Length (ft)	Description	Volume (bbl)
45.00	M100m	0.22

Gas Rates

Choke (inches)	Pressure (psig)	Gas Rate (Mcf/d)



**TRILOBITE
TESTING, INC**

DRILL STEM TEST REPORT

Hartman Oil Co., Inc.

S28-22s-33w Finney, KS

10500 E. Berkeley Sq.
Suite 100
Wichita, KS 67206
ATTN: Kitt Noah

Damme #46

Job Ticket: 45090

DST#: 1

Test Start: 2012.03.12 @ 00:07:00

GENERAL INFORMATION:

Formation: **Morrow Sand**

Deviated: No Whipstock: ft (KB)

Time Tool Opened: 04:38:00

Time Test Ended: 09:29:49

Test Type: Conventional Bottom Hole (Initial)

Tester: Chuck Smith

Unit No: 37

Interval: 4643.00 ft (KB) To 4728.00 ft (KB) (TVD)

Reference Elevations: 2896.00 ft (KB)

Total Depth: 4728.00 ft (KB) (TVD)

2886.00 ft (CF)

Hole Diameter: 7.88 inches Hole Condition: Good

KB to GR/CF: 10.00 ft

Serial #: 6751 Outside

Press @ Run Depth: psig @ 4647.00 ft (KB)

Capacity: 8000.00 psig

Start Date: 2012.03.12

End Date:

2012.03.12

Last Calib.:

2012.03.12

Start Time: 00:07:02

End Time:

09:29:49

Time On Btm:

Time Off Btm:

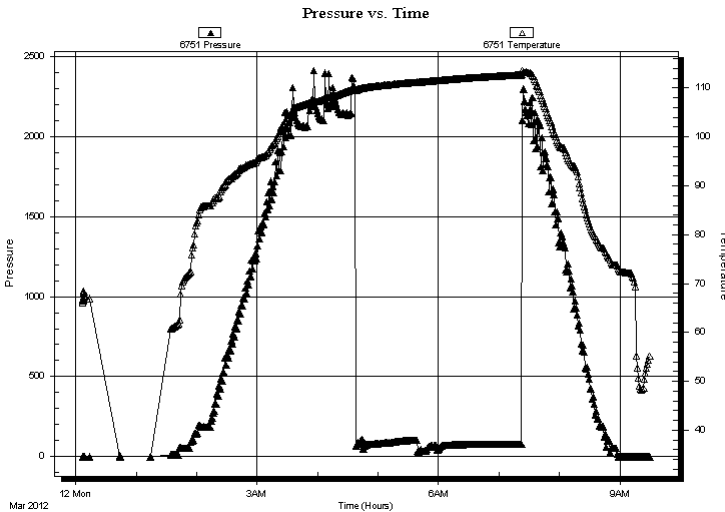
TEST COMMENT: Surface blow died @ 15 min.

No return.

No blow .

No return.

PRESSURE SUMMARY



Time (Min.)	Pressure (psig)	Temp (deg F)	Annotation
-------------	-----------------	--------------	------------

Recovery

Gas Rates

Length (ft)	Description	Volume (bbl)
45.00	M100m	0.22

	Choke (inches)	Pressure (psig)	Gas Rate (Mcf/d)



**TRILOBITE
TESTING, INC**

DRILL STEM TEST REPORT

TOOL DIAGRAM

Hartman Oil Co., Inc.

S28-22s-33w Finney, KS

10500 E. Berkeley Sq.
Suite 100
Wichita, KS 67206
ATTN: Kitt Noah

Damme #46

Job Ticket: 45090

DST#: 1

Test Start: 2012.03.12 @ 00:07:00

Tool Information

Drill Pipe:	Length: 4272.00 ft	Diameter: 3.80 inches	Volume: 59.92 bbl	Tool Weight: 2500.00 lb
Heavy Wt. Pipe:	Length: 0.00 ft	Diameter: 0.00 inches	Volume: 0.00 bbl	Weight set on Packer: 25000.00 lb
Drill Collar:	Length: 372.00 ft	Diameter: 2.25 inches	Volume: 1.83 bbl	Weight to Pull Loose: 90000.00 lb
			<u>Total Volume: 61.75 bbl</u>	Tool Chased 0.00 ft
Drill Pipe Above KB:	28.50 ft			String Weight: Initial 78000.00 lb
Depth to Top Packer:	4643.00 ft			Final 78000.00 lb
Depth to Bottom Packer:	ft			
Interval between Packers:	85.00 ft			
Tool Length:	112.50 ft			
Number of Packers:	2	Diameter: 6.75 inches		

Tool Comments:

Tool Description

Tool Description	Length (ft)	Serial No.	Position	Depth (ft)	Accum. Lengths
Change Over Sub	1.00			4616.50	
Shut In Tool	5.00			4621.50	
Hydraulic tool	5.00			4626.50	
Jars	5.00			4631.50	
Safety Joint	2.50			4634.00	
Packer	5.00			4639.00	27.50 Bottom Of Top Packer
Packer	4.00			4643.00	
Stubb	1.00			4644.00	
Perforations	3.00			4647.00	
Recorder	0.00	8018	Inside	4647.00	
Recorder	0.00	6751	Outside	4647.00	
Perforations	14.00			4661.00	
Change Over Sub	1.00			4662.00	
Drill Pipe	62.00			4724.00	
Change Over Sub	1.00			4725.00	
Bullnose	3.00			4728.00	85.00 Bottom Packers & Anchor
Total Tool Length:	112.50				



**TRILOBITE
TESTING, INC**

DRILL STEM TEST REPORT

FLUID SUMMARY

Hartman Oil Co., Inc.

S28-22s-33w Finney, KS

10500 E. Berkeley Sq.
Suite 100
Wichita, KS 67206
ATTN: Kitt Noah

Damme #46

Job Ticket: 45090

DST#: 1

Test Start: 2012.03.12 @ 00:07:00

Mud and Cushion Information

Mud Type: Gel Chem

Mud Weight: 9.00 lb/gal

Viscosity: 64.00 sec/qt

Water Loss: 7.18 in³

Resistivity: ohm.m

Salinity: 1500.00 ppm

Filter Cake: 1.00 inches

Cushion Type:

Cushion Length: ft

Cushion Volume: bbl

Gas Cushion Type:

Gas Cushion Pressure: psig

Oil API:

Water Salinity: deg API

ppm

Recovery Information

Recovery Table

Length ft	Description	Volume bbl
45.00	M 100m	0.221

Total Length: 45.00 ft Total Volume: 0.221 bbl

Num Fluid Samples: 0

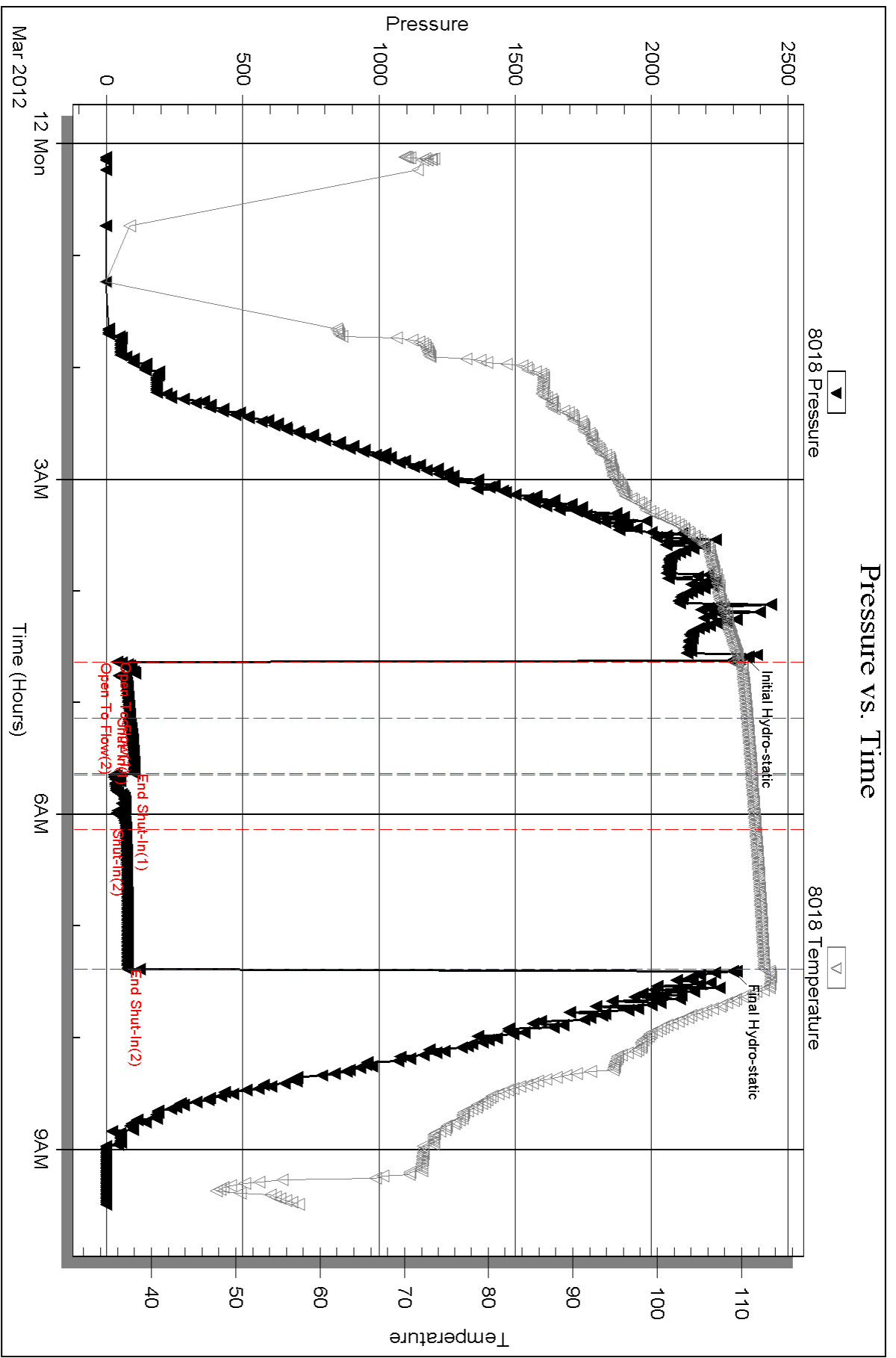
Num Gas Bombs: 0

Serial #:

Laboratory Name:

Laboratory Location:

Recovery Comments:

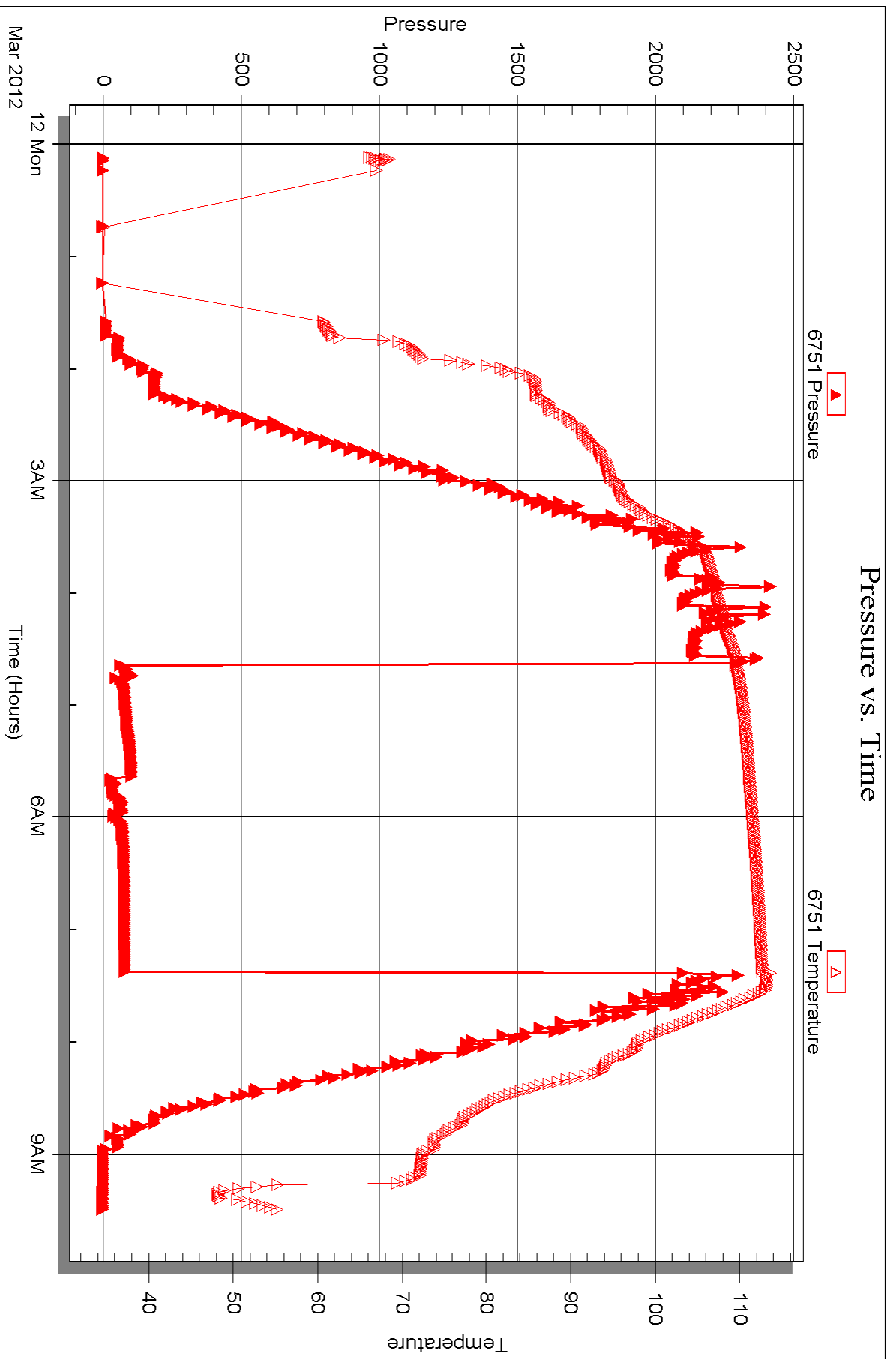


Serial #: 6751

Outside Hartman Oil Co., Inc.

Damme #46

DST Test Number: 1





DRILL STEM TEST REPORT

Prepared For: **Hartman Oil Co., Inc.**

10500 E. Berkeley Sq.
Suite 100
Wichita, KS 67206

ATTN: Kitt Noah

Damme #46

S28-22s-33w Finney, KS

Start Date: 2012.03.12 @ 18:05:00

End Date: 2012.03.13 @ 02:44:40

Job Ticket #: 45091 DST #: 2

Trilobite Testing, Inc

PO Box 362 Hays, KS 67601

ph: 785-625-4778 fax: 785-625-5620

Printed: 2012.03.15 @ 13:20:06



**TRILOBITE
TESTING, INC**

DRILL STEM TEST REPORT

Hartman Oil Co., Inc.

S28-22s-33w Finney, KS

10500 E. Berkeley Sq.
Suite 100
Wichita, KS 67206
ATTN: Kitt Noah

Damme #46

Job Ticket: 45091

DST#: 2

Test Start: 2012.03.12 @ 18:05:00

GENERAL INFORMATION:

Formation: **St. Genevieve - St.**

Deviated: No Whipstock: ft (KB)

Time Tool Opened: 20:41:10

Time Test Ended: 02:44:40

Test Type: Conventional Bottom Hole (Reset)

Tester: Chuck Smith

Unit No: 37

Interval: 4718.00 ft (KB) To 4758.00 ft (KB) (TVD)

Reference Elevations: 2896.00 ft (KB)

Total Depth: 4758.00 ft (KB) (TVD)

2886.00 ft (CF)

Hole Diameter: 7.88 inches Hole Condition: Good

KB to GR/CF: 10.00 ft

Serial #: 8018

Inside

Press @ Run Depth: 148.59 psig @ 4752.00 ft (KB)

Capacity: 8000.00 psig

Start Date: 2012.03.12

End Date:

2012.03.13

Last Calib.: 2012.03.13

Start Time: 18:05:02

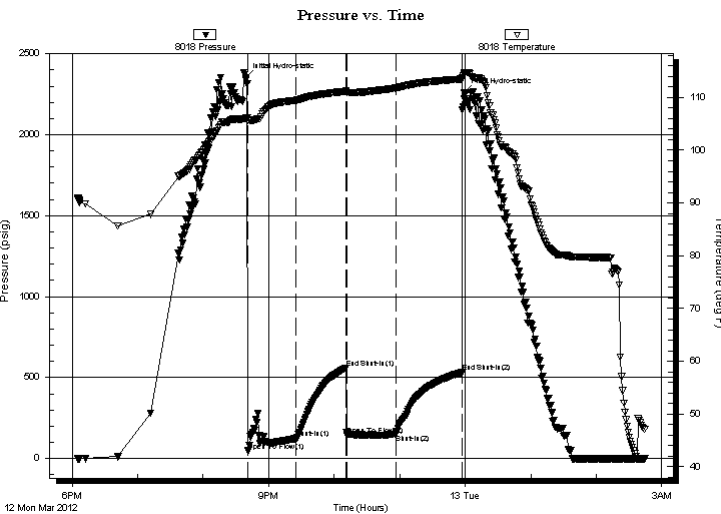
End Time:

02:44:40

Time On Btm: 2012.03.12 @ 20:38:50

Time Off Btm: 2012.03.12 @ 23:58:39

TEST COMMENT: B.O.B. @ 14 min.
3" Return.
B.O.B. @ 13 min.
B.O.B. @ 45 min.



PRESSURE SUMMARY

Time (Min.)	Pressure (psig)	Temp (deg F)	Annotation
0	2350.45	106.06	Initial Hydro-static
3	47.82	105.68	Open To Flow (1)
46	123.78	109.45	Shut-In(1)
92	560.03	111.17	End Shut-In(1)
93	145.59	110.93	Open To Flow (2)
138	148.59	111.77	Shut-In(2)
199	531.39	113.48	End Shut-In(2)
200	2257.21	114.59	Final Hydro-static

Recovery

Length (ft)	Description	Volume (bbl)
93.00	GOCM 30g 20o 50m	0.46
93.00	GMCO 50g 15m 35o	0.46
186.00	GO 15g 85o	0.91
30.00	GO 50g 50o	0.42
0.00	435 Feet GIP	0.00

Gas Rates

Choke (inches)	Pressure (psig)	Gas Rate (Mcf/d)

* Recovery from multiple tests



**TRILOBITE
TESTING, INC**

DRILL STEM TEST REPORT

Hartman Oil Co., Inc.
10500 E. Berkeley Sq.
Suite 100
Wichita, KS 67206
ATTN: Kitt Noah

S28-22s-33w Finney, KS

Damme #46

Job Ticket: 45091

DST#: 2

Test Start: 2012.03.12 @ 18:05:00

GENERAL INFORMATION:

Formation: **St. Genevieve - St.**
 Deviated: No Whipstock: ft (KB)
 Time Tool Opened: 20:41:10
 Time Test Ended: 02:44:40
 Interval: **4718.00 ft (KB) To 4758.00 ft (KB) (TVD)**
 Total Depth: 4758.00 ft (KB) (TVD)
 Hole Diameter: 7.88 inches Hole Condition: Good
 Test Type: Conventional Bottom Hole (Reset)
 Tester: Chuck Smith
 Unit No: 37
 Reference Elevations: 2896.00 ft (KB)
 2886.00 ft (CF)
 KB to GR/CF: 10.00 ft

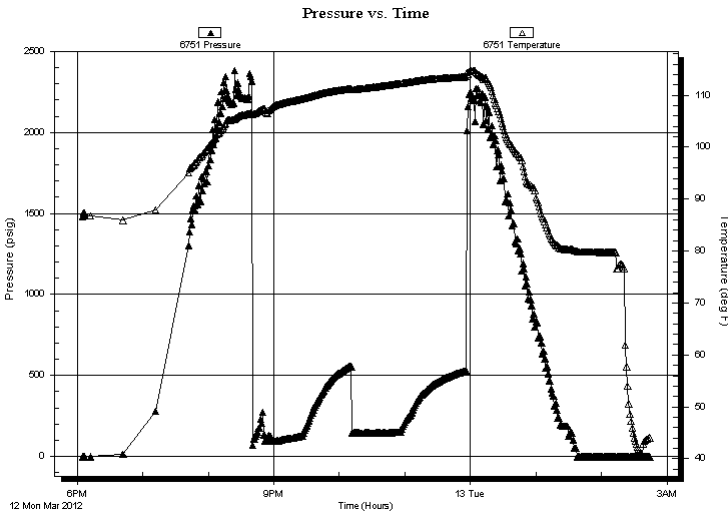
Serial #: 6751

Outside

Press @ Run Depth: psig @ 4752.00 ft (KB)
 Start Date: 2012.03.12 End Date: 2012.03.13
 Start Time: 18:05:02 End Time: 02:44:40
 Capacity: 8000.00 psig
 Last Calib.: 2012.03.13
 Time On Btm:
 Time Off Btm:

TEST COMMENT: B.O.B. @ 14 min.
 3" Return.
 B.O.B. @ 13 min.
 B.O.B. @ 45 min.

PRESSURE SUMMARY



Time (Min.)	Pressure (psig)	Temp (deg F)	Annotation

Recovery

Length (ft)	Description	Volume (bbl)
93.00	GOCM 30g 20o 50m	0.46
93.00	GMCO 50g 15m 35o	0.46
186.00	GO 15g 85o	0.91
30.00	GO 50g 50o	0.42
0.00	435 Feet GIP	0.00

* Recovery from multiple tests

Gas Rates

Choke (inches)	Pressure (psig)	Gas Rate (Mcf/d)



**TRILOBITE
TESTING, INC**

DRILL STEM TEST REPORT

TOOL DIAGRAM

Hartman Oil Co., Inc.

S28-22s-33w Finney, KS

10500 E. Berkeley Sq.
Suite 100
Wichita, KS 67206
ATTN: Kitt Noah

Damme #46

Job Ticket: 45091

DST#: 2

Test Start: 2012.03.12 @ 18:05:00

Tool Information

Drill Pipe:	Length: 4334.00 ft	Diameter: 3.80 inches	Volume: 60.79 bbl	Tool Weight: 2500.00 lb
Heavy Wt. Pipe:	Length: 0.00 ft	Diameter: 0.00 inches	Volume: 0.00 bbl	Weight set on Packer: 25000.00 lb
Drill Collar:	Length: 372.00 ft	Diameter: 2.25 inches	Volume: 1.83 bbl	Weight to Pull Loose: 105000.0 lb
			<u>Total Volume: 62.62 bbl</u>	Tool Chased 0.00 ft
Drill Pipe Above KB:	15.50 ft			String Weight: Initial 78000.00 lb
Depth to Top Packer:	4718.00 ft			Final 79000.00 lb
Depth to Bottom Packer:	ft			
Interval between Packers:	40.00 ft			
Tool Length:	67.50 ft			
Number of Packers:	2	Diameter: 6.75 inches		

Tool Comments:

Tool Description	Length (ft)	Serial No.	Position	Depth (ft)	Accum. Lengths
------------------	-------------	------------	----------	------------	----------------

Change Over Sub	1.00			4691.50	
Shut In Tool	5.00			4696.50	
Hydraulic tool	5.00			4701.50	
Jars	5.00			4706.50	
Safety Joint	2.50			4709.00	
Packer	5.00			4714.00	27.50 Bottom Of Top Packer
Packer	4.00			4718.00	
Stubb	1.00			4719.00	
Perforations	33.00			4752.00	
Recorder	0.00	8018	Inside	4752.00	
Recorder	0.00	6751	Outside	4752.00	
Perforations	3.00			4755.00	
Bullnose	3.00			4758.00	40.00 Bottom Packers & Anchor

Total Tool Length: 67.50



**TRILOBITE
TESTING, INC**

DRILL STEM TEST REPORT

FLUID SUMMARY

Hartman Oil Co., Inc.

S28-22s-33w Finney, KS

10500 E. Berkeley Sq.
Suite 100
Wichita, KS 67206
ATTN: Kitt Noah

Damme #46

Job Ticket: 45091

DST#: 2

Test Start: 2012.03.12 @ 18:05:00

Mud and Cushion Information

Mud Type: Gel Chem

Cushion Type:

Oil API:

31 deg API

Mud Weight: 9.00 lb/gal

Cushion Length:

ft

Water Salinity:

ppm

Viscosity: 50.00 sec/qt

Cushion Volume:

bbbl

Water Loss: 7.19 in³

Gas Cushion Type:

Resistivity: ohm.m

Gas Cushion Pressure:

psig

Salinity: 2100.00 ppm

Filter Cake: 1.00 inches

Recovery Information

Recovery Table

Length ft	Description	Volume bbl
93.00	GOCM 30g 20o 50m	0.457
93.00	GMCO 50g 15m 35o	0.457
186.00	GO 15g 85o	0.915
30.00	GO 50g 50o	0.421
0.00	435 Feet GIP	0.000

Total Length: 402.00 ft Total Volume: 2.250 bbl

Num Fluid Samples: 0

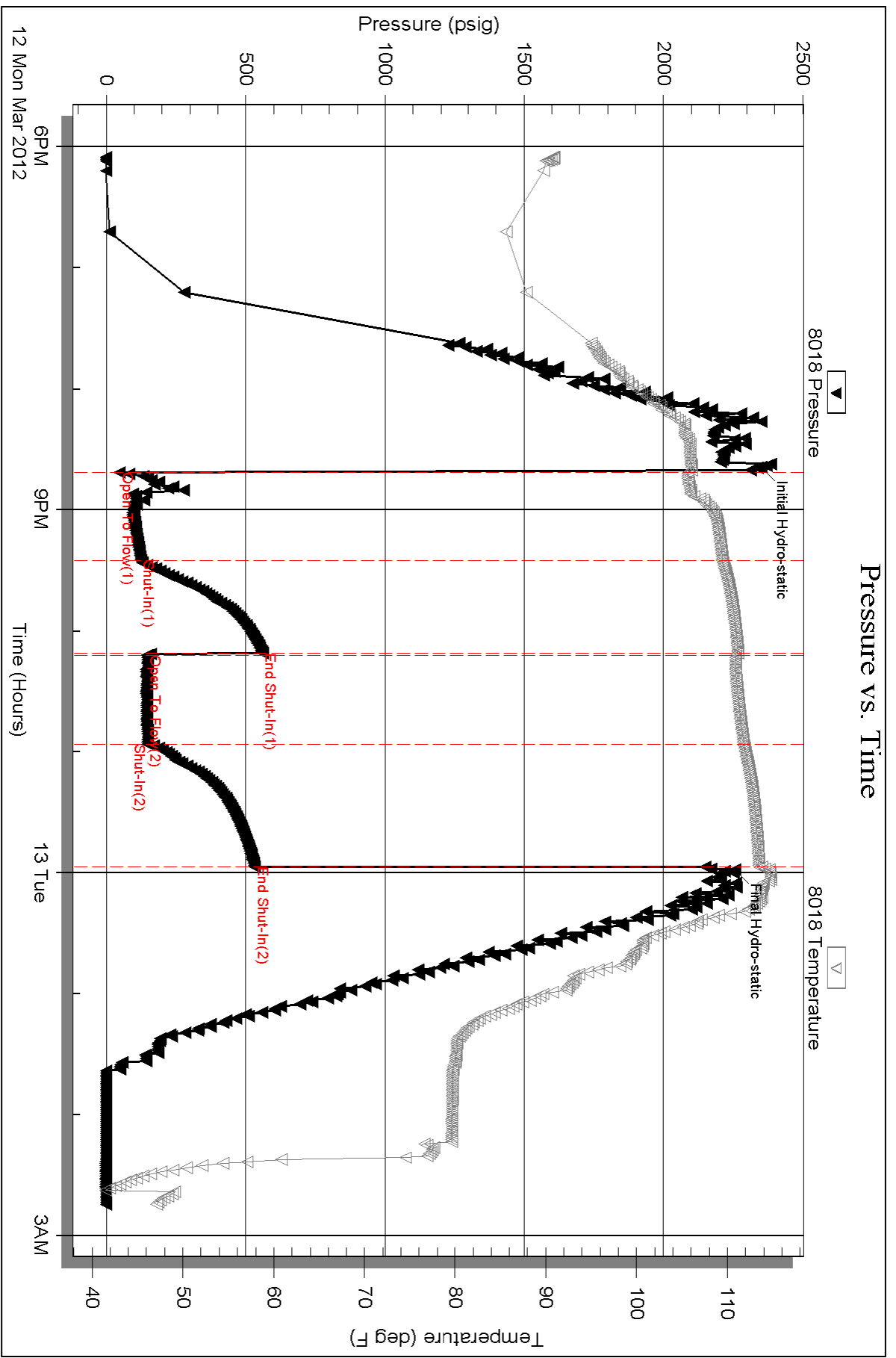
Num Gas Bombs: 0

Serial #:

Laboratory Name:

Laboratory Location:

Recovery Comments: API: 31 @ 60 Degrees F = 31 .

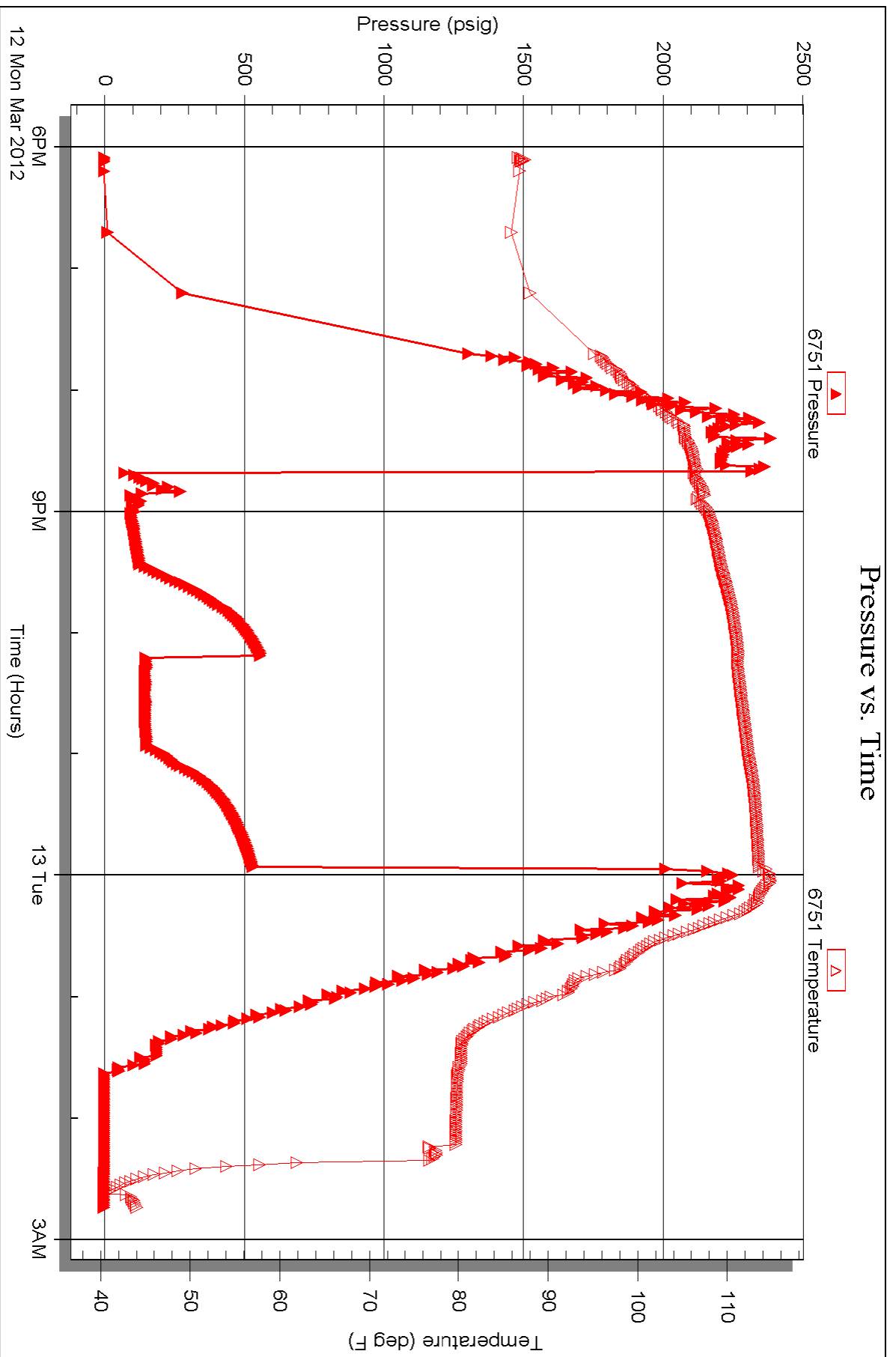


Serial #: 6751

Outside Hartman Oil Co., Inc.

Damme #46

DST Test Number: 2





TRILOBITE TESTING INC.

P.O. Box 1733 • Hays, Kansas 67601

RECEIVED
MAR 15 2012

Test Ticket

NO. 45090

BY: _____

Well Name & No. Damme* 46 Test No. 1 Date 3-11-12
 Company Hartman Oil Co. Elevation 2896 KB 2886 GL
 Address 10500 E. Berkeley Sq. Ste. 100 Wichita, KS 67206
 Co. Rep / Geo. Kitt Noah Rig H2#1
 Location: Sec. 28 Twp. 22s Rge. 33w Co. Finney State KS

Interval Tested 4643-4728 Zone Tested Morrow Sand
 Anchor Length 85 Drill Pipe Run 4272 Mud Wt. 9.1
 Top Packer Depth 4639 Drill Collars Run 372 Vis 64
 Bottom Packer Depth 4643 Wt. Pipe Run 0 WL 7.2
 Total Depth 4728 Chlorides 1500 ppm System LCM 4

Blow Description Surface blow died @ 15 min
No return.
No blow.
No return.

Rec	Feet of	%gas	%oil	%water	%mud
Rec <u>45</u>	Feet of <u>M</u>			<u>100</u>	<u>0</u>
Rec _____	Feet of _____			<u>40</u>	<u>0</u>
Rec _____	Feet of _____				
Rec _____	Feet of _____				

Rec Total 45 BHT 113 Gravity — API RW @ _____ °F Chlorides — ppm

(A) Initial Hydrostatic 2347 Test 1225' T-On Location 23:30
 (B) First Initial Flow 39 Jars 250' T-Started 00:07
 (C) First Final Flow 87 Safety Joint 75' T-Open 04:38
 (D) Initial Shut-In 102 Circ Sub NIC T-Pulled 07:23
 (E) Second Initial Flow 28 Hourly Standby _____ T-Out 9:30
 (F) Second Final Flow 71 Mileage 63RTx2 176.40 Comments _____
 (G) Final Shut-In 78 Sampler _____
 (H) Final Hydrostatic 2298 Straddle _____ Ruined Shale Packer _____

Shale Packer _____ Ruined Packer _____
 Extra Packer _____ Extra Copies _____
 Extra Recorder _____ Sub Total 150
 Day Standby _____ Total 1876.40
 Accessibility 150' MP/DST Disc't _____
 Sub Total 1726.40

Approved By Kitt Noah Our Representative Chuck Amick

Trilobite Testing Inc. shall not be liable for damaged of any kind of the property or personnel of the one for whom a test is made, or for any loss suffered or sustained, directly or indirectly, through the use of its equipment, or its statements or opinion concerning the results of any test, tools lost or damaged in the hole shall be paid for at cost by the party for whom the test is made.



TRILOBITE TESTING INC.

P.O. Box 1733 • Hays, Kansas 67601

RECEIVED
MAR 15 2012

Test Ticket

NO. 45091

Well Name & No. Damme #46 BY: _____ Test No. 2 Date 3-12-12
 Company Hartman Oil Co. Elevation 2896 KB 2886 GL _____
 Address 10500 E. Berkeley Sq. Ste. 100 Wichita, KS 67206
 Co. Rep / Geo. Kit Noah Rig H2 #1
 Location: Sec. 28 Twp. 22s Rge. 33w Co. Finney State KS

Interval Tested 4718 - 4758 Zone Tested St. Genevieve - St. Louis C
 Anchor Length 40 Drill Pipe Run 4334 Mud Wt. 9.0
 Top Packer Depth 4714 Drill Collars Run 372 Vis 50
 Bottom Packer Depth 4718 Wt. Pipe Run 0 WL 7.2
 Total Depth 4758 Chlorides 2100 ppm System LCM 4
 Blow Description B.O.B. @ 14 min.
3" Return.
B.O.B. @ 13 min.
B.O.B. @ 45 min.

Rec	Feet of	%gas	%oil	%water	%mud
<u>30</u>	<u>60</u>	<u>50</u>	<u>50</u>		
<u>186</u>	<u>80</u>	<u>15</u>	<u>85</u>		
<u>93</u>	<u>GM60</u>	<u>50</u>	<u>35</u>		<u>15</u>
<u>93</u>	<u>GOCM</u>	<u>30</u>	<u>20</u>		<u>50</u>
Rec	Feet of <u>435' GIP</u>	%gas	%oil	%water	%mud

Rec Total 402 BHT 114 Gravity 31 API RW _____ @ _____ °F Chlorides _____ ppm

(A) Initial Hydrostatic 2350 Test 1225" T-On Location 18:00
 (B) First Initial Flow 48 Jars 250" T-Started 18:05
 (C) First Final Flow 124 Safety Joint 75" T-Open 20:41
 (D) Initial Shut-In 560 Circ Sub N/C T-Pulled 23:57
 (E) Second Initial Flow 146 Hourly Standby _____ T-Out 2:45
 (F) Second Final Flow 149 Mileage 63 RT 88.20 Comments _____
 (G) Final Shut-In 531 Sampler _____
 (H) Final Hydrostatic 2257 Straddle _____ Ruined Shale Packer _____
 Shale Packer _____ Ruined Packer 320"
 Extra Packer _____ Extra Copies _____
 Initial Open 45 Extra Recorder _____ Sub Total 470"
 Initial Shut-In 45 Day Standby _____ Total 2108.20
 Final Flow 45 Accessibility 190" MP/DST Disc't _____
 Final Shut-In 60 Sub Total 1638.20

Approved By Kit Noah

Our Representative Chuck Smith

Trilobite Testing Inc. shall not be liable for damaged of any kind of the property or personnel of the one for whom a test is made, or for any loss suffered or sustained, directly or indirectly, through the use of its equipment, or its statements or opinion concerning the results of any test, tools lost or damaged in the hole shall be paid for at cost by the party for whom the test is made.