



DRILL STEM TEST REPORT

Prepared For: **F.G.Holl Company L.L.C.**

9431 East Central Suite 100
Wichita, Kansas 67206-2563

ATTN: Rene Husted

Bell "A" #1-7

7-30s-13w Barber

Start Date: 2012.02.12 @ 07:28:00

End Date: 2012.02.12 @ 15:49:30

Job Ticket #: 15862 DST #: 4

Superior Testers Enterprises LLC
PO Box 138 Great Bend KS 67530
1-800-792-6902

Printed: 2012.02.12 @ 14:05:50



DRILL STEM TEST REPORT

F.G.Holl Company L.L.C.

7-30s-13w Barber

9431 East Central Suite 100
Wichita, Kansas 67206-2563

Bell "A" #1-7

Job Ticket: 15862

DST#: 4

ATTN: Rene Husted

Test Start: 2012.02.12 @ 07:28:00

GENERAL INFORMATION:

Formation: **Viola**

Deviated: No Whipstock: ft (KB)

Time Tool Opened: 09:53:30

Time Test Ended: 15:49:30

Test Type: Conventional Bottom Hole (Initial)

Tester: Dustin Ellis

Unit No: 3315-Prat-40

Interval: 4450.00 ft (KB) To 4522.00 ft (KB) (TVD)

Reference Elevations: 1855.00 ft (KB)

Total Depth: 4522.00 ft (KB) (TVD)

1842.00 ft (CF)

Hole Diameter: 7.88 inches Hole Condition: Fair

KB to GR/CF: 13.00 ft

Serial #: 8400 Inside

Press @ Run Depth: 180.87 psig @ 4518.86 ft (KB)

Capacity: 5000.00 psig

Start Date: 2012.02.12

End Date: 2012.02.12

Last Calib.: 2012.02.12

Start Time: 07:28:00

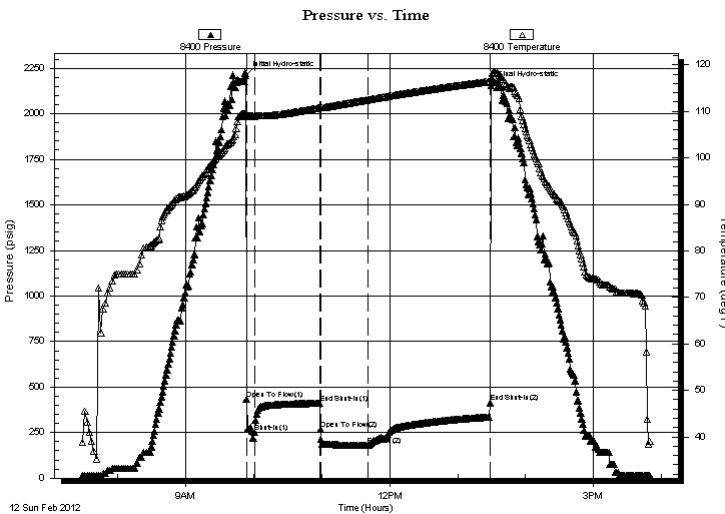
End Time: 15:49:30

Time On Btm: 2012.02.12 @ 09:53:00

Time Off Btm: 2012.02.12 @ 13:29:30

TEST COMMENT: 1st Open 5 minutes Strong blow bottom of the bucket 1 minutes
1st Shut in 60 minutes No blow back
2nd Open 60 minutes Strong blow w ith gas to surface in 5 minutes
2nd Shut in 90 minutes Yes blow back

PRESSURE SUMMARY



Time (Min.)	Pressure (psig)	Temp (deg F)	Annotation
0	2211.63	109.59	Initial Hydro-static
1	432.17	108.86	Open To Flow (1)
8	252.42	108.98	Shut-In(1)
66	411.09	110.79	End Shut-In(1)
66	269.57	110.74	Open To Flow (2)
108	180.87	112.48	Shut-In(2)
216	415.14	116.49	End Shut-In(2)
217	2153.56	117.07	Final Hydro-static

Recovery

Length (ft)	Description	Volume (bbl)
420.00	Gas cut mud 100%	4.25

Gas Rates

	Choke (inches)	Pressure (psig)	Gas Rate (Mcf/d)
First Gas Rate	0.13	10.00	9.13
Last Gas Rate	0.13	37.00	19.24
Max. Gas Rate	0.13	37.00	19.24



DRILL STEM TEST REPORT

F.G.Holl Company L.L.C.

7-30s-13w Barber

9431 East Central Suite 100
Wichita, Kansas 67206-2563

Bell "A" #1-7

Job Ticket: 15862

DST#: 4

ATTN: Rene Husted

Test Start: 2012.02.12 @ 07:28:00

GENERAL INFORMATION:

Formation: **Viola**

Deviated: No Whipstock: ft (KB)

Time Tool Opened: 09:53:30

Time Test Ended: 15:49:30

Test Type: Conventional Bottom Hole (Initial)

Tester: Dustin Ellis

Unit No: 3315-Prat-40

Interval: 4450.00 ft (KB) To 4522.00 ft (KB) (TVD)

Reference Elevations: 1855.00 ft (KB)

Total Depth: 4522.00 ft (KB) (TVD)

1842.00 ft (CF)

Hole Diameter: 7.88 inches Hole Condition: Fair

KB to GR/CF: 13.00 ft

Serial #: 8405 Outside

Press @ Run Depth: 334.44 psig @ 4519.86 ft (KB)

Capacity: 5000.00 psig

Start Date: 2012.02.12

End Date: 2012.02.12

Last Calib.: 2012.02.12

Start Time: 07:28:00

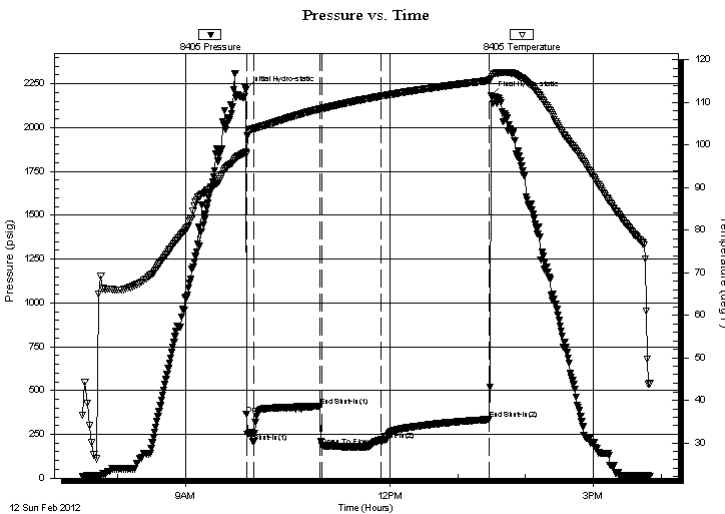
End Time: 15:49:30

Time On Btm: 2012.02.12 @ 09:53:00

Time Off Btm: 2012.02.12 @ 13:29:30

TEST COMMENT: 1st Open 5 minutes Strong blow bottom of the bucket 1 minutes
1st Shut in 60 minutes No blow back
2nd Open 60 minutes Strong blow with gas to surface in 5 minutes
2nd Shut in 90 minutes Yes blow back

PRESSURE SUMMARY



Time (Min.)	Pressure (psig)	Temp (deg F)	Annotation
0	2212.95	98.24	Initial Hydro-static
1	365.39	97.84	Open To Flow (1)
7	204.48	103.78	Shut-In(1)
66	409.33	108.45	End Shut-In(1)
68	184.50	108.52	Open To Flow (2)
120	219.09	111.43	Shut-In(2)
215	334.44	115.12	End Shut-In(2)
217	2182.14	115.65	Final Hydro-static

Recovery

Length (ft)	Description	Volume (bbl)
420.00	Gas cut mud 100%	4.25

Gas Rates

	Choke (inches)	Pressure (psig)	Gas Rate (Mcf/d)
First Gas Rate	0.13	10.00	9.13
Last Gas Rate	0.13	37.00	19.24
Max. Gas Rate	0.13	37.00	19.24



DRILL STEM TEST REPORT

TOOL DIAGRAM

F.G.Holl Company L.L.C.

7-30s-13w Barber

9431 East Central Suite 100
Wichita, Kansas 67206-2563

Bell "A" #1-7

Job Ticket: 15862

DST#: 4

ATTN: Rene Husted

Test Start: 2012.02.12 @ 07:28:00

Tool Information

Drill Pipe:	Length: 4278.00 ft	Diameter: 3.80 inches	Volume: 60.01 bbl	Tool Weight: 2000.00 lb
Heavy Wt. Pipe:	Length: 0.00 ft	Diameter: 0.00 inches	Volume: 0.00 bbl	Weight set on Packer: 20000.00 lb
Drill Collar:	Length: 180.00 ft	Diameter: 2.25 inches	Volume: 0.89 bbl	Weight to Pull Loose: 100000.0 lb
			<u>Total Volume: 60.90 bbl</u>	Tool Chased 0.00 ft
Drill Pipe Above KB:	36.00 ft			String Weight: Initial 68000.00 lb
Depth to Top Packer:	4450.00 ft			Final 72000.00 lb
Depth to Bottom Packer:	ft			
Interval between Packers:	72.86 ft			
Tool Length:	100.86 ft			
Number of Packers:	2	Diameter: 6.75 inches		

Tool Comments:

Tool Description	Length (ft)	Serial No.	Position	Depth (ft)	Accum. Lengths
------------------	-------------	------------	----------	------------	----------------

Shut-In Tool	5.00			4427.00	
Hydraulic Tool	5.00			4432.00	
Jars	6.00			4438.00	
Safety Joint	2.00			4440.00	
Packer	5.00			4445.00	28.00 Bottom Of Top Packer
Packer	5.00			4450.00	
Anchor	0.00			4450.00	
Change Over Sub	0.75			4450.75	
Drill Pipe	30.36			4481.11	
Change Over Sub	0.75			4481.86	
Anchor	36.00			4517.86	
Recorder	1.00	8400	Inside	4518.86	
Recorder	1.00	8405	Outside	4519.86	
Bull Plug	3.00			4522.86	72.86 Bottom Packers & Anchor

Total Tool Length: 100.86



DRILL STEM TEST REPORT

FLUID SUMMARY

F.G.Holl Company L.L.C.

7-30s-13w Barber

9431 East Central Suite 100
Wichita, Kansas 67206-2563

Bell "A" #1-7

Job Ticket: 15862

DST#: 4

ATTN: Rene Husted

Test Start: 2012.02.12 @ 07:28:00

Mud and Cushion Information

Mud Type: Gel Chem
Mud Weight: 9.00 lb/gal
Viscosity: 49.00 sec/qt
Water Loss: 8.80 in³
Resistivity: ohm.m
Salinity: 4000.00 ppm
Filter Cake: 1.00 inches

Cushion Type:
Cushion Length: ft
Cushion Volume: bbl
Gas Cushion Type:
Gas Cushion Pressure: psig

Oil API: deg API
Water Salinity: ppm

Recovery Information

Recovery Table

Length ft	Description	Volume bbl
420.00	Gas cut mud 100%	4.252

Total Length: 420.00 ft Total Volume: 4.252 bbl

Num Fluid Samples: 0

Num Gas Bombs: 0

Serial #:

Laboratory Name:

Laboratory Location:

Recovery Comments:



DRILL STEM TEST REPORT

GAS RATES

F.G.Holl Company L.L.C.

7-30s-13w Barber

9431 East Central Suite 100
Wichita, Kansas 67206-2563

Bell "A" #1-7

Job Ticket: 15862

DST#: 4

ATTN: Rene Husted

Test Start: 2012.02.12 @ 07:28:00

Gas Rates Information

Temperature: 59 (deg F)
Relative Density: 0.65
Z Factor: 0.8

Gas Rates Table

Flow Period	Elapsed Time	Choke (inches)	Pressure (psig)	Gas Rate (Mcf/d)
1	10	0.13	10.00	9.13
1	10	0.13	10.00	9.13
2	20	0.13	25.00	14.75
3	30	0.13	37.00	19.24

